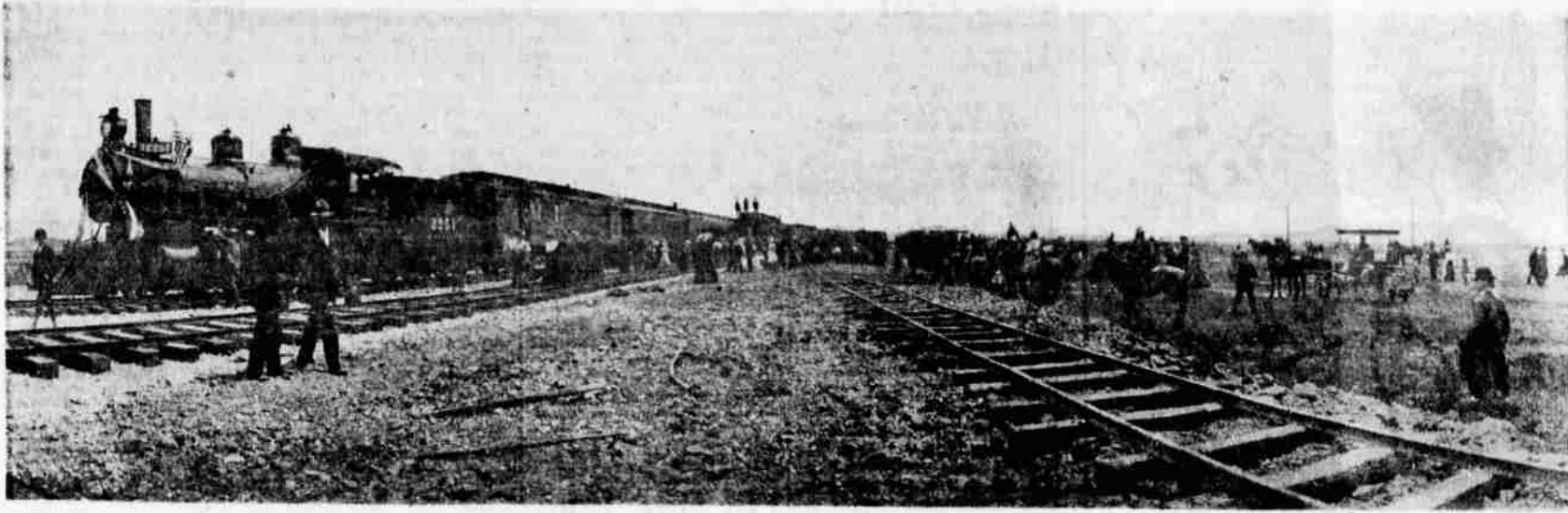


Railroad Captured Fancy Of The Basin, Fifty Years Ago



THE FIRST TRAIN TO KLAMATH FALLS, Southern Pacific's Engine 2251 and nine cars, was mobbed by dwellers of the Klamath Basin when it arrived over brand new tracks 50 years ago. Seldom has the community's atmosphere been so festive. In the words of then Mayor Fred T. Sanderson, Klamath County was suddenly "annexed" to the rest of the

world. About 2,000 people attended the arrival — nearly double the town's population. Throngs of them are visible in the lower panoramic photograph shot by an unknown but expert photographer and loaned to the Herald and News by Hal Ogle, a topnotch Klamath County historian. So wild was the celebration that it attracted six automobiles which

drove in a big parade. Mostly, though, the celebrants came in surreys and on horseback. In the lower picture the train is a faint caterpillar on the horizon. Pennants of a circus tent are barely visible at right.

By NORM CARDOZA
People of Klamath County were having a wonderful time 50 years ago this year.

Nearly all good things people ever dreamed would happen to the Klamath Basin were happening, just like everyone always knew they would.

Lawyer Denies Implication Teamster Submitted Bribe

WASHINGTON (AP) — Bartley C. Crum says he did not mean to imply in sworn testimony that Edward Bennett Williams, a Teamsters Union attorney, had offered him a bribe.

Crum, a New York lawyer, filed a statement Thursday with the Senate Labor-Management Committee saying his relations with Williams had been on the highest professional level.

Holdup Seen On GI Bill

WASHINGTON (AP) — The GI Bill for peacetime veterans, passed Tuesday by the Senate, may have to wait until next year for House consideration.

But in his statement Thursday Crum said he wanted the record to show that no inference should be drawn from his testimony about a conversation with Williams that the payment of Schmidt's fees hinged on Crum's not testifying.

WASHINGTON (UPI) — The number of Americans on public welfare rolls dropped more sharply in May than in any month since October 1950, a Social Security administration report showed today.

Michigan requires a special license for hunting with a sling shot.

WASHINGTON (UPI) — The number of Americans on public welfare rolls dropped more sharply in May than in any month since October 1950, a Social Security administration report showed today.

Michigan requires a special license for hunting with a sling shot.

WASHINGTON (UPI) — The number of Americans on public welfare rolls dropped more sharply in May than in any month since October 1950, a Social Security administration report showed today.

Michigan requires a special license for hunting with a sling shot.

WASHINGTON (UPI) — The number of Americans on public welfare rolls dropped more sharply in May than in any month since October 1950, a Social Security administration report showed today.

Michigan requires a special license for hunting with a sling shot.

WASHINGTON (UPI) — The number of Americans on public welfare rolls dropped more sharply in May than in any month since October 1950, a Social Security administration report showed today.

Michigan requires a special license for hunting with a sling shot.

WASHINGTON (UPI) — The number of Americans on public welfare rolls dropped more sharply in May than in any month since October 1950, a Social Security administration report showed today.

Michigan requires a special license for hunting with a sling shot.

WASHINGTON (UPI) — The number of Americans on public welfare rolls dropped more sharply in May than in any month since October 1950, a Social Security administration report showed today.

Michigan requires a special license for hunting with a sling shot.

WASHINGTON (UPI) — The number of Americans on public welfare rolls dropped more sharply in May than in any month since October 1950, a Social Security administration report showed today.

Michigan requires a special license for hunting with a sling shot.

WASHINGTON (UPI) — The number of Americans on public welfare rolls dropped more sharply in May than in any month since October 1950, a Social Security administration report showed today.

Michigan requires a special license for hunting with a sling shot.

running between San Francisco and Portland.

At the same time, rumblings of range wars between cattlemen and sheepmen still were circulating. Rumors had it that men were shooting at each other, but newspaper accounts of the period indicated sheep — dozens of them — were the only casualties.

Big lumber companies were buying large tracts of timber, previously considered worth something, but not much. The city was building a library, a high school and other public works.

The official celebration heralding the arrival of the railroad was saved for June 14, 1909, just under a month since the first train arrived.

Said one newspaper writer: "Nature in all its beauty clothed in glorious sunshine and kissed by the gentle breeze from off the snow-capped peaks and shimmering lakes gave cordial welcome to Klamath's greatest day, and by its gentle touch gave stimulus to the enthusiasm that has been held in bay for this occasion."

That was nearly double the population of Klamath Falls. Dignitaries from Sacramento and San Francisco were present. "The only delegation missing," the reporter snickered, "was from poor old Portland."

It would be another 17 years before the Southern Pacific completed the circuit from Klamath Falls to Portland.

In his speech to the assembly, Mayor Fred T. Sanderson said, "Today marks the passing for all time, so far as Klamath Falls is concerned, of the stagecoach and freight team."

Michigan requires a special license for hunting with a sling shot.

Michigan requires a special license for hunting with a sling shot.

Michigan requires a special license for hunting with a sling shot.

Michigan requires a special license for hunting with a sling shot.

Michigan requires a special license for hunting with a sling shot.

Michigan requires a special license for hunting with a sling shot.

Michigan requires a special license for hunting with a sling shot.

Michigan requires a special license for hunting with a sling shot.

Michigan requires a special license for hunting with a sling shot.

Michigan requires a special license for hunting with a sling shot.

Michigan requires a special license for hunting with a sling shot.

"It is as though we had today been annexed to and made a part of the great commonwealth of Oregon."

"My friends, we are grateful to Brother Harriman for his efforts to eliminate the beautiful distances that have for years intervened between us and civilization."

"Let us not forget that today they (nearby counties and communities without railroad) in their isolation and deprivation, are rejoicing with us, confident that Brother Harriman has heard their prayers for deliverance."

Here are statements by Judge J. B. Griffiths who prophesied: "The marshes that are richer than anything you ever saw will someday grow the finest celery you ever saw."

"Klamath County will soon be supplying the East with lumber and cattle."

Previously, W. H. Holabird, a key instrument in snagging that won for SP a clear track into Klamath Falls, foretold that Klamath County contained enough room for 100,000 people, and that Klamath Falls would become a community of 20,000.

Latest estimates by the Klamath County Chamber of Commerce (which was formed in 1906 to subscribe \$100,000 to lure the railroad) places county population at 51,112, the city's at 20,200, and the South Suburban area at 16,000, excluding approximately 5,000 at Kingsley Field and Capehart Housing.

LaPointe's

IT'S A WONDERFUL STORE

Saturday

Check

List



OF GOOD VALUES

Japanese mink stoles

only \$198.50 . . . that is a fraction of the price you expect to pay for such luxurious stoles. LaPointe's summer fur sale is a golden opportunity for all kinds of fine minks. terms to suit your budget.
*plus federal tax

sheath and jacket dresses

only \$9.98 . . . nationally \$10.98. famous name dresses in cool, carefree cotton plaid, sleeveless scoop-neck sheath, leather belt, jacket has four jet buttons, johnny collar and ruffled front. red plaid or brown plaid. lay-away for back to school.

plaid sheath dresses

only \$12.98 . . . nationally \$14.98. slim sheath with white band at scoop neckline, short sleeves all lace-trimmed, three little pearl buttons, transitional wash 'n wear cottons are cool yet new into fall.

summer dress sale

only \$7.00, \$9.00 and \$11.00 . . . formerly up to \$25.95. cottons, silks, slim skirts and full, some dresses with jackets. large attractive group.

new fall helanca sweaters

short sleeve pullovers, only \$3.29 . . . nationally \$3.98, cardigans only \$4.98 . . . nationally \$5.98. brand new shipment of fall forest colors, guaranteed machine washable and machine dryable, see our ad in tonight's paper.

permanently pleated flannel skirt

only \$10.98 . . . regularly \$12.98. beautiful botany flannel, slightly flared, permanently pleated skirt. it folds, it packs, it won't wrinkle, and the pleats stay in forever. the perfect back-to-school travel skirt.

sale of 2-pc. separates

only \$4.99 and \$6.99 . . . formerly up to \$16.95, beautiful eyelets, appliques, gingham checks, and woven stripes, short sleeve or sleeveless, slim or full skirts.

corduroy capri pants

only \$5.79 . . . regularly \$6.98. beautiful prints in paisleys and tapestries. ideal for back-to-school, goes wonderfully with your fall sweaters.

summer nylon robe sale

only \$3.49 . . . formerly to \$5.98. many darling patterns, stripes or floral prints in sculptured nylon. cool and easy to care for, look pretty these hot mornings.

formfit foundation sale

girdles: buy two for only \$10.98 . . . regularly \$7.50 each, save \$4.02. bras: buy two for only \$3.96 . . . regularly \$2.50 each, save \$1.04. last days of formfit sale.

summer baby doll sale

only \$3.29 . . . regularly \$4.98. floral print in cool, sheer cotton, lace-trimmed scoop neckline and lace-trimmed shorts, pink and blue.

At the New Marion in SALEM . . .

- Good Food
 - Fun and Relaxation
 - Hotel or Motel
- Guest Accommodations
- Heated Swimming Pool
 - 18th Cent. Antique Shop
 - Convention Facilities



200 S. Commercial Salem, Oregon
Phone EMmaie 3-4123

Want Something Delivered or Moved?
Phone TU 2-3737
CITY DELIVERY SERVICE



*Every A-1 Used Car is inspected, reconditioned if necessary, and road-tested. And they're warranted in writing by the exclusive new Performance Protection Policy! See cars with the A-1 sticker at your Ford Dealer's Used Car Shopping Center.

SEE PAGE 7-B FOR
FORD DEALER A-1 USED CARS
INSPECTED • RECONDITIONED • ROAD-TESTED • WARRANTED

SAVE UP TO 80% ON RUG CLEANING DO-IT-YOURSELF RUG CLEANING FOR RENT. A & B Paint Store 1229 E. Main TU 4-3234

4" RUBBER RING SEWER PIPE

Meets Specifications For South Suburban Sewer Connections. ONLY 45¢ Ring Included. USE 4" RUBBER RING PIPE — THE PROVEN PRODUCT THAT COSTS YOU LESS AT PEYTON & CO. 835 Market St. TU 4-5149



Choose a set of the classics in easy-care helanca in a raft of new fall colors. Black, white, red, saddle brown, gray heather, dark green or blue.
slipon cardigan only \$3.29
only \$4.98

