

THIS EQUIPMENT forms, presses and cuts insulating board at the new Johns-Manville plant. The wet sheets are conveyed from here through an automatic dryer which prepares them for finishing into a variety of products.

Board Plant Included In Expansion

Completion of the new Johns-Manville insulating board plant at Klamath Falls, Oregon, marks the latest step in a program to expand the company's manufacturing facilities in the Pacific Coast area in order to serve better one of the fastest growing markets in the country.

Over a period of several years the cost of these new facilities has come to well over \$30 million.

In addition to the Klamath Falls plant the program has included acquisition of the latter part of last year of a plant at Corona, Calif., for the manufacture of fiber glass products; a new plant at Stockton, Calif., for the manufacture of Transite (asbestos-cement) pipe, completed in 1958; installation of facilities at a Watson (Long Beach), Calif., plant for the manufacture of new types of industrial insulations, completed in 1954; new production facilities completed in 1953 for asbestos-cement structural sheet building materials at a plant at Pittsburg, Calif.; and a new plant for the manufacture of synthetic silicates at Lompoc, Calif.

Bringing to seven the number of its West Coast plants, the company also has a plant at Los Angeles for the manufacture of asphalt roofing products.

In addition to industrial insulations, the Watson plant manufactures Transite pipe and Spintex home insulation. The Pittsburg plant makes a full line of asphalt and asbestos roofing and siding products as well as asbestos-cement structural sheet building materials.

WRONG ADDRESS

NORFOLK, Va. (UPI)—Builder David I. Levine constructed three new homes only to discover his carpenters had mistakenly erected them on property owned by the city of Norfolk. The City Council came to Levine's rescue, however, by selling him the property on which he had built. It was almost identical to the lots he had purchased for the homes, but two blocks away.

Employees Health, Safety Safeguarded at J-M Plant

Johns-Manville is constantly striving to safeguard the health of all its employees. At all times healthful working conditions are maintained throughout its plants, mines and offices.

Projects for making work more healthful and pleasant include improved ventilation and dust control, better lockers and wash rooms, improved heating and lighting, cafeterias and lunch rooms, and safety devices.

Employees at the new Johns-Manville insulating board plant at Klamath Falls, Oregon, are provided with the most modern type cafeteria and washing and toilet facilities.

The cafeteria which provides hot foods, is finished in attractive and decorative J-M insulating board so employees may eat in pleasant surroundings. J-M Terraflex tile floors have been provided for improved appearance and serviceability.

Individual lockers of the forced ventilated type to aid drying of work clothes and improvement of atmosphere in the change rooms are provided for plant employees. These lockers are mounted on 8 inch covered concrete bases set on top of 1 inch special hard concrete floor surface.

Conventional Bradley basin, shower baths and accessories, with plenty of hot water continuously available, make it possible for plant employees to report for work in their street clothes and go home the same way.

Hand in hand with healthful surroundings are safe working conditions. A continuous safety campaign is carried on at all plants and mines under a trained safety engineer and through plant safety committees.

When Johns-Manville constructs mills, plants and offices or develops a mine, the utmost consideration is given to the safety and health of every member of the organization.

Every effort is made to provide safe and healthful places of work.

WHITENESS RESTORED

ST. PAUL (UPI)—To restore whiteness to a Dacron blouse or shirt:

First dissolve one cup of electrical dishwashing compound in one gallon of warm water in an enameled pan or pail. Stir the solution until it dissolves, taking care not to get any in your eyes or on your skin.

Then dip the garment in the solution until it is completely covered, and let it soak overnight. The next morning let water from the faucet run into the container for about 10 minutes for an overflow rinse. Rub the soiled areas briskly with a soft brush or sponge. Wash the garment thoroughly.

FLASHY PASS

NIAGARA FALLS, N.Y. (UPI)—Scranton University basketball player Bob Tompkins had a tooth knocked out when he collided with an opponent during a game here. He elected to remain in the game and tossed the tooth across the gym floor, only to remember later he'd discarded a gold bicuspid.

UNDAMPENED SPIRITS

SOUTH VANDALIA, N.Y. (UPI)—Norman Romaine, 68, and Charles Bennett, 76, were finally persuaded to abandon their home here after spending the preceding night watching television while seven inches of flood water covered the living room floor.

FEW DEFICIENT IN IODINE

CLEVELAND, Ohio (UPI)—Iodine deficiency has become so rare in the U.S. that iodine treatment of various forms of goiter is almost always useless if not harmful, according to Dr. George Crile Jr. of the Cleveland Clinic Foundation.

by carefully arranging equipment and machinery, by installing adequate protective devices and equipment and by providing the most modern medical facilities. And after long and detailed study, safety rules are adopted for the employee's welfare. These rules are based on what is considered most beneficial to the individual and most helpful to the organization in carrying out the job.

Among the measures taken by Johns-Manville to help prevent accidents are periodic inspections of equipment by plant safety committees and safety engineers.

Training on the job is an important part of accident prevention. Great emphasis is put on safe working practices and on proper use of personal protection equipment.

In designing and building the employe facilities and providing safe, healthy and pleasant working conditions, one main objective was kept in mind: to make the Klamath Falls Johns-Manville plant "a good place to work."

EASY ON THE BUDGET

NEW YORK (UPI)—A gourmet meal on a slim budget might feature broiled marinated chicken.

Place 2 broiler-fryers, quartered, in shallow pan. Pour over marinade made of 1 cup salad oil, 1-3 cup vinegar, 1/2 teaspoon each dry mustard and paprika, 1/2 teaspoon each salt and monosodium glutamate, 1/4 teaspoon tabasco and 1 crushed garlic clove. Chill at least 2 hours, turning chicken once or twice. Remove from marinade, place skin side down on broiler rack about 6 inches from heat source. Broil 15 minutes, basting often with marinade. Turn, broil 15 minutes more, or until chicken is tender, continuing to baste. Serves 4.

Thanks!

And GOOD LUCK to
**JOHNS
MANVILLE**

THANKS...
for letting us serve you
through these months of your
building and becoming an im-
portant part of our communi-
ty. Your confidence in this
great area makes us feel
proud!

**Underwood's
CAMERA SHOP**

706 Main And at Town and
Country Shopping Center

WELCOME JOHNS-MANVILLE

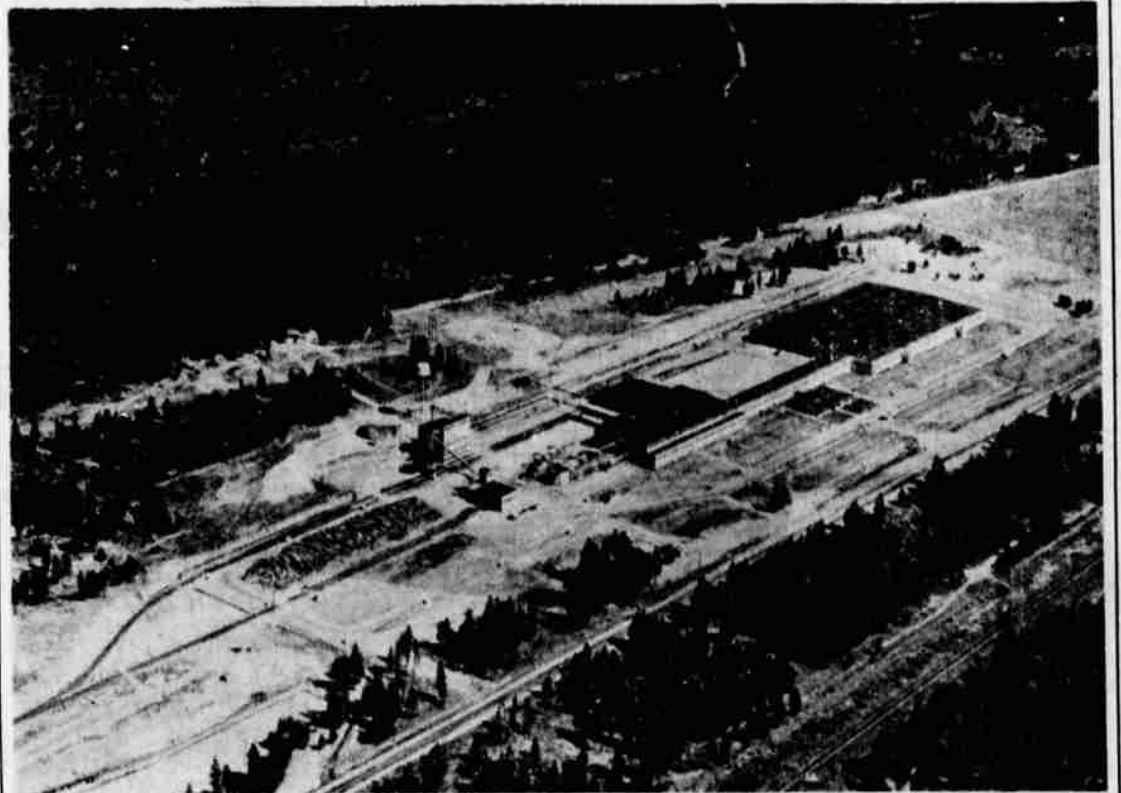
We are pleased to welcome
the fine new Johns-Manville
Plant to the Klamath Community

MOTY & VAN DYKE, INC.

Automotive and Industrial Supplies - Shop Equipment
638 Klamath Avenue
Klamath Falls

Johns-Manville....

Bright new industrial landmark



New \$12,000,000 Johns-Manville Insulating Board Plant, located along Williamson River near Highway 97, 22 miles north of Klamath Falls.

U.S. National shares the tremendous pride of Klamath County in Johns-Manville's selection of the productive Klamath Basin for its multi-million dollar Insulating Board Plant. This great new industry, the first Johns-Manville Plant in Oregon, points the way to a brighter, more prosperous future for us all. Our admiration has been especially captured by the fact that in utilizing lodgepole pine, this progressive company has turned a hitherto unexploited resource into a vitally important regional asset. U.S. National, whose policy is also based on progress, pledges its friendship and cooperation to Klamath County's great new industry — Johns-Manville.

KLAMATH FALLS BRANCH
EIGHTH AND MAIN

TOWN & COUNTRY BRANCH
3720 SOUTH SIXTH

DIRECT BRANCHES OF
THE UNITED STATES NATIONAL BANK OF PORTLAND



The United States National Bank of Portland Member Federal Deposit Insurance Corporation