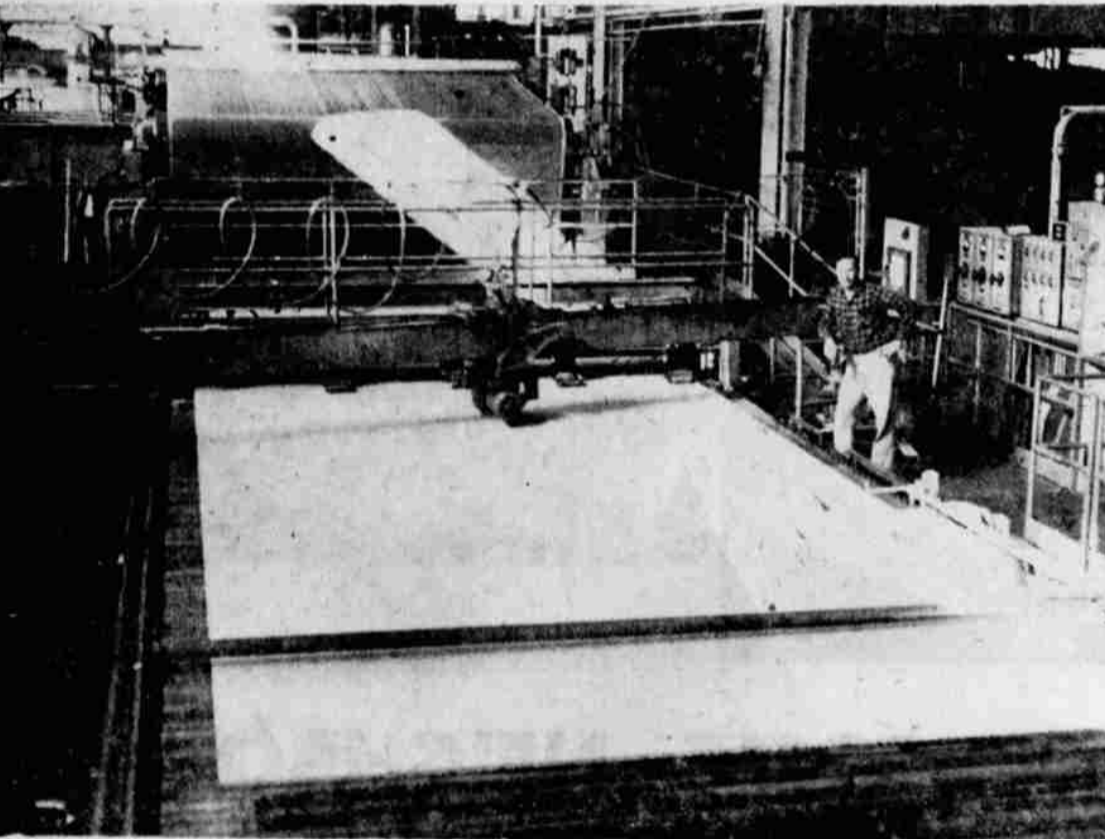


END OF PRODUCTION LINE is shown in this wide shot. Four-by-eight foot sheets of insulating board are wrapped and packaged for shipment in the finishing department of the Johns-Manville plant.



AN AUTOMATIC SAW, electrically operated traveling saw, cuts continuous sheets of insulating board into required lengths at the new Johns-Manville plant north of Klamath Falls.

American Dress Designer Raps Liz' Clothes Choice

By EDDY GILMORE

LONDON (AP)—American dress designer Don Loper said today that Queen Elizabeth II is a well-dressed woman but dresses too much her age.

"It's probably not her fault," he added. "It's the fault of those who dress her. Why, at times, she looks 33."

A reporter said that Her Majesty was 33.

"That's my point," he snapped. Asked about Princess Margaret's clothes, Loper replied: "The princess is not an easy one to dress, this is because of her size."

Margaret is short with plenty of curves. Loper said he had deep sympathy for the royal ladies and their clothes.

"Everyone's looking at them all the time and they look with a critical eye."

"They're on (on stage) from the minute they wake until they go to bed. And don't forget—because of their great activities—standing around at ceremonies and walk-

ing through factories and such—they've got to be comfortable, too."

Here with four Hollywood models and what he claimed was a million dollars worth of dress, Loper has been invited to put on a show for tonight's glittering Anglo-American Ball.

Somebody asked how he thought Princess Grace Kelly of Monaco looks in her clothes.

"Her serene Highness looks dreadful now that those Paris dressmakers have got at her," he said.

"I used to make her look like a princess—now she looks like just plain Grace Kelly."

Asked if he didn't like French and Italian dressmakers, Loper snorted: "Some of them are just a bunch of juvenile delinquents. It's taken one certain young Frenchman several years to learn that a woman's bosom is in front."

Pembina, N. D., settled by Scotch colonists, once had annual buffalo hunts.

Congratulations & Best Wishes

JOHNS - MANVILLE
ON THE OPENING OF YOUR NEW PLANT
Jones' Office Supply

629 Main

TU 2-4408

WELCOME TO THE

Johns - Manville Plant

It is a pleasure to see an industrial plant of this size located in the Klamath Basin.

★ We Have Appreciated Having A Part In The Completion Of This New Johns-Manville Insulation Board Plant.

★ Electrical Installation ★ Motor Repair & Maintenance

Eastside Electric

433 Market

TU 4-3184

DROP IN LEAD SHIPMENTS

NEW YORK (UPI)—Lead shipments by primary domestic refineries dropped to a nine-year low in 1958, according to a report released by the American Bureau of Metal Statistics.

Shipments last year totaled 389,359 tons, down 18 per cent from the year before, and the lowest on record since 355,905 tons were moved in the recession year of 1949, the Bureau said.

BIG DEAL

RUFFALO, N.Y. (UPI)—Orator F. Woodward bought the formula for a gelatine dessert for \$450 just before the turn of the century and founded a company to produce it. Twenty-five years later, the Woodward family sold the Jel-O Co. for stock in the Postum Co. valued at \$67 million.

GRANGE NEWS

LOST RIVER

Lost River Grange held its regular meeting at the grange hall in Olene Wednesday, June 24.

Master Pavitt Newnham introduced the following guests who addressed the grange:

Roy Means, Deschutes County, Oregon State Grange deputy. He was accompanied by Mrs. Means and his daughter, Linda, chaplain of the Oregon State Juvenile Grange; Minnie Andrieu, Klamath County, Oregon State Grange juvenile superintendent and Sylvia Andrieu, Klamath County Pomona of Oregon State Juvenile Grange.

4-H NEWS

POE VALLEY FREEZERETTES

Girls of the Poe Valley Freezerettes met at Mrs. Beber's home June 17. The club members cleaned the roadside for community service. When the girls finished they went back to Mrs. Beber's and had the meeting. The meeting was called to order by Susan Tubach. Secretary Susan Beber passed out some pamphlets which we looked over and decided on which one we would send for. Sally Wenz led us in one song. The club had a picnic and played games.

Sharry Sherman,
News Reporter

NO FOOLING AROUND

RANDOLPH, Vt. (UPI)—When young Jeff Hannah told his mother he was going to shoot the villain in a TV drama, she smiled tolerantly and turned back to the show. Seconds later, Master Hannah blasted away with his BB gun, smashing the picture tube.

Congratulations TO Johns-Manville ON THEIR Formal Opening

It is always a pleasure to welcome new industries to the Klamath area. This new payroll will add greatly to the economy of the Klamath Basin.

G. C. Motley Inc.

● PLUMBING ● HEATING ● SHEET METAL ● STRUCTURAL STEEL

812 Klamath Ave.

Phone TU 4-6616

CONGRATULATIONS EQUIPMENT INSTALLATION and PROCESSED PIPING

ROSENDAHL CORPORATION

ENGINEERING CONSTRUCTORS

100 Bush Street
San Francisco, Calif.

11933 Wilshire Blvd.
Los Angeles, Calif.