

Range Group Will Hold Annual Meet

The American Society of Range Management is holding its annual Pacific Northwest section range tour in the Yakima area this year. It will be a two-day affair, June 12 and 13. They expect well over one hundred people to attend.

The first day of the tour will be spent looking over the Wandling Brothers range in the Horse Heaven Hills. The operator's will give a complete history of the ranch. Harry Wegeleben, range technician with the Soil Conservation Service, will give some of the range management highlights. The tour will continue to the Yakima Indian Reservations, where Mark Stevens and Lyman Haverfield, Indian Service range technicians, will show and explain the many range management practices now in use on the reservation, including those on the Wandlings' unit.

The annual banquet will be held Friday night.

The second day of the tour is planned for the high mountain country west of Yakima. George Schindler, manager of the Oak Creek game range, will conduct the group over the 90,000-acre game range and explain the work that is being done there. The lunch stop will be at the spot where "The Hanging Tree" was filmed. In the afternoon Spike Armstrong and Chuck Banco, U.S. Forest Service, will conduct the tour into some primitive country. This is a country where the forest service has made a study on Devil's Table and Meeks' Table. Devil's Table has been excessively overgrazed. However, Meeks' Table has been unused by livestock, due to inaccessibility. Meeks' Table was recently reserved as an area for scientific study by the Secretary of Agriculture.

Ranchers and range technicians in the northwest are invited and urged to attend this tour.

The American Society of Range Management was created in 1947 to foster advancement in the science and art of grazing land management. The Pacific Northwest Section has the largest present membership in the United States. It has over 250 active members. It is made up of range technicians, ranchers, and students of range management. The Pacific Northwest Section includes Oregon, Washington, and British Columbia.

Oregon Senator Still Pushes For National Forest Action

WASHINGTON, D.C. (Special)—Senator Richard L. Neuberger said today that the Eisenhower administration has "supplied the methods but failed to approve the money" for implementation of a long-range program for development and protection of the country's national forests.

The Oregon Democrat noted that the Bureau of the Budget has not approved funds for expenditure on a comprehensive plan for management of National

Forests which was submitted to Congress by the Department of Agriculture earlier this year.

"At a special hearing held by western senators, Agriculture Assistant Secretary Ervin L. Peterson stated that the \$3,400,000,000 cost estimate for the next 12 years, has not yet received budget bureau clearance," Neuberger said. "Questions asked by senators showed that the forest service budget for fiscal year 1960 was some seven million dollars below funds available in 1959. On the other hand, the agriculture department has estimated that a 40 million dollar annual increase will be needed for each of the next five years."

Neuberger expressed the belief that, with 1960 budget estimates down, it would be dubious that the budget bureau would provide the large increase needed.

"Assistant Secretary Peterson told us that the forest service had asked for 188 million dollars for fiscal year 1960 and that almost 40 million dollars was cut from this request by the department of agriculture itself," Neuberger reported. "The budget bureau made an additional cut of almost 29 million dollars which caused the forest service budget to drop well below last year's figure."

The senator said that cuts made by the administration did not indicate to him that the national forest program has the support of top administration officials.

Neuberger noted that the program calls for increases for national forest programs of 40 million dollars each year for the next five years to raise expenditure levels from 120 million dollars annually to 320 million dollars. The investment is calculated to produce revenue increases from approximately 110 million dollars this year to 210 million dollars, and then to 385 million dollars.

Approximately 27 per cent of the money will have to be spent on roads, 21 per cent on timber, 12 per cent on recreation and wildlife and the balance on various other programs, he said, to achieve full benefits of the program. During the investment period it is estimated that costs may exceed annual revenues by 100 million dollars a year but, thereafter, revenues would substantially exceed costs.

In Oregon an investment of 260 million dollars would be required in the next 12 years, 162 million dollars for roads, 40 million dollars for reforestation, 14 million dollars for housing and lookouts and nine million dollars for recreational facilities. The investments needed for roads are twice as big as those in any other state, Neuberger stressed, and much greater on a per acre basis

than elsewhere in the United States. He charged that the administration has consistently opposed access road legislation which, if enacted earlier, would have helped tremendously in opening up the national forests for greater use and better management.

"The administration philosophy is that the necessary investments in our forests which will later produce revenue can only be made if cuts are made in some other government function," the senator said, pointing out that Assistant Secretary Peterson told the appropriations committee that if the Congress put money in for the national forest program this year he hoped that the committee would make compensating cuts elsewhere in the budget. "The administration has a split personality," Neuberger declared. "On the one hand it announces programs which show that an investment of funds would produce revenue while on the other hand, it is reluctant to seek the funds without having a cut made in some other essential project."

Beef Feed Study Told

New findings in beef cattle feeding, including adjustment of rations for animals receiving hormone treatment, have been reported by the Oregon State College agricultural experiment station.

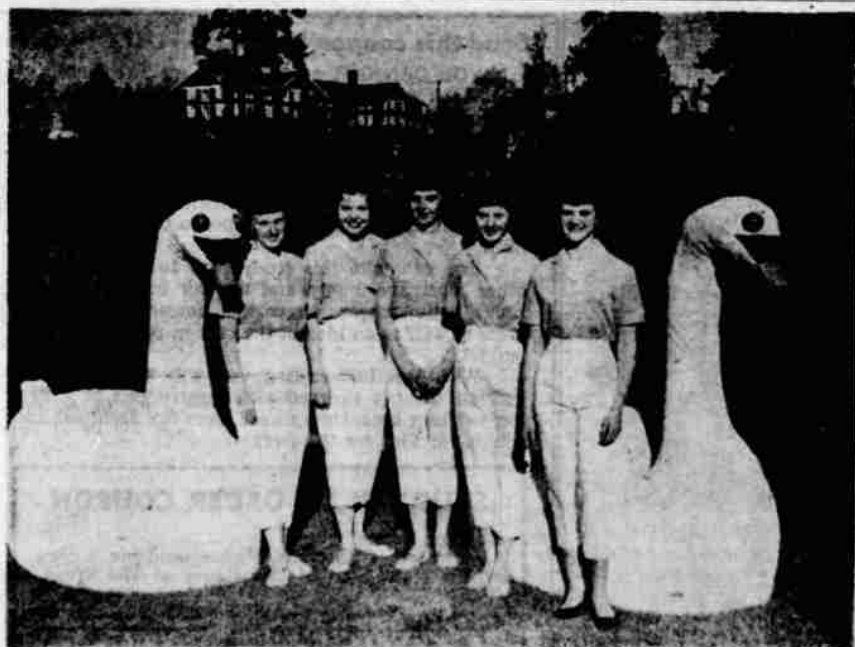
Results are summarized in a bulletin, "Results of 1957-58 Mil-ton-Freewater Beef Feeding Experiments." Oregon residents may obtain free copies from local county extension agents or from the OSC bulletin clerk, Corvallis.

David C. England, OSC animal scientist, and Norton Taylor, Umatilla County extension agent, conducted the trials in cooperation with Umatilla County beef producers.

More than 200 animals provided by local ranchers were used in the trials. Major findings include adjustment of grain intake as animals gain weight, best protein levels, comparisons of various types of roughages, and experiments with single and multiple hormone implants to stimulate growth.

THE COVER

Drippingstone Manor was an apt name for this camp on the slopes of Hart Mountain in mid May of this year. The camp is located in the public campground area at the hot springs. That white stuff on the hill is not flowers. It is snow. Fresh snow. But it is a lovely spot, rain or shine.



ONE OF THESE LOVELY GIRLS will be selected to reign as queen of the 1959 Water Pageant in Bend on July 2-3-4. Selection of the queen will be made on the evening of June 27. The queen and her court will appear in Klamath Falls during the parade on July 4. From left to right are Joan Benson, Pat Feaney, Judy Haines, Pat Hollenbeck and Susie Mooers. — Photo by Van Allen

Farmers! Ranchers! Stockmen!
SEE JUCK
 for
Your Truck!
JUCKELAND
 MOTORS, Inc.
 Your International Dealer
 11th & Klamath Ph. 2-2581

BENNINGTON STEEL BUILDING CO.

BUTLER
 5059 BRYANT AVE.
 TU 4-3334
 KLAMATH FALLS

X-PELO PRODUCTS
 Will cut the operating cost of your gasoline or diesel engine! Ask about it at any of the following dealers:

Cunningham & Rickey
 7th & Commercial
 Richfield Service
 105 Main

Don Potter Company
 Tulelake, Calif.

Richard Morgan, Dist.
 P. O. Box 487, Kl. Falls
 Ph. 4-7869


CUSTOM CUTTING of Your
BEEF OR PORK
 Our Low Meat Prices Will Make It Worth Your While To Investigate NOW!
BIG Y MARKET
 Ph. TU 4-4620 4710 So. 6th

AMERICA'S NEWEST, NEATEST FLY KILLER
KORLAN

- Korlan kills flies resistant to other sprays.
- Long lasting, kills flies 4 to 6 weeks.
- Safe to handle.
- Use Korlan in poultry houses or dairy barns and other types of farm buildings.
- Get your season's supply now.



Albers Feed & Farm Supply
 Klamath Falls, Ore.

We're equipped . . .



For all your home improvement needs
 Quality Materials, Sound Planning, Free Estimates

SWAN LAKE 3226 So. 6th
Moulding Company TU 4-5145