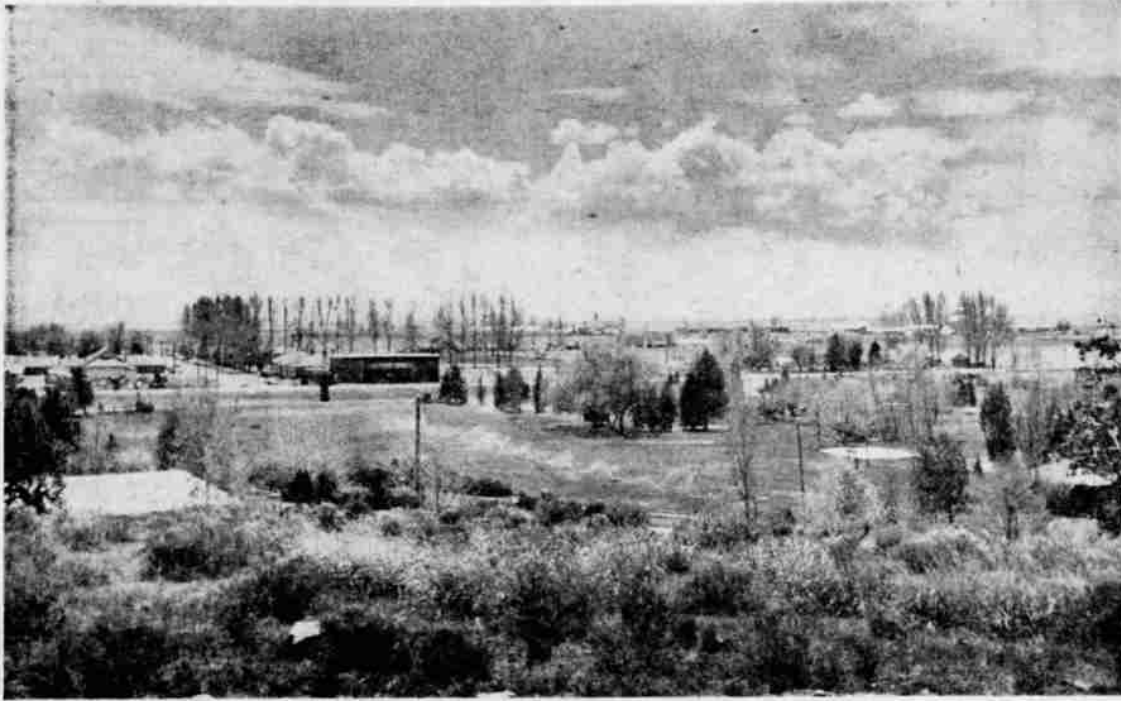


Chamber Of Commerce Triggered Park Nineteen Years Ago



THE MALIN PARK, looking from top of hill, where original settlers first saw their land, toward present high school and elementary school in background. Swimming pool top is to the left below the hill. Plans for building the park, now estimated to be a quarter of a million dollar investment, originated in the Malin Chamber of Commerce. It is considered by park and recreation authorities throughout the Northwest

to be one of the finest parks in several states. Not one cent is owed on the property for improvements. Operation is on a current paid basis. Hundreds and hundreds of man hours of work have been donated by interested citizens to ground improvement, many of these hours by Mike M. Stasny, retired Malin rancher and park board chairman and Emil Polivka, retired rancher and member of the board of directors.

Nineteen years ago in 1940, the board of directors of the Malin Chamber of Commerce talked about building a park to be used free of charge by all who came to seek relaxation.

By the fall of 1943 the proposal had caught the imagination of the Malin community and donations large and small began pouring in from public spirited citizens and merchants. Dick Henzel, Klamath County rancher headed a committee to handle the funds.

Cash donations since then have approximated \$160,000. As the project gained momentum a park district was formed to encompass the area from Adams Point on the west, the state line south, east to include the Loveness Lumber Mill and north to the line of hills separating Malin from Poe Valley. Land within this perimeter only, comprising the Malin Community Park and Recreation District, is on the tax rolls for park taxation.

Officers were elected with Dick Henzel, president, M. M. Stasny, A. Kalina, directors, and T. A. ("Ted") DeMerritt appointed as secretary.

Funds derived from tax millage for maintenance are approximately \$12,000 annually.

Area of the park is about 30 acres. Twelve acres have been landscaped and other sections of the park are being readied for further plantings. The board, some years ago, bought an entire garden nursery, moving shrubs and trees to the park location.

Construction on the swimming pool was begun in the spring of 1948 and the pool was officially opened in July 1949. The pool is a Class "A" type, 105 by 45 feet, containing 200,000 gallons of soft water, automatically heated, chlorinated and filtered. Approximately 30,000 persons from Malin and surrounding areas use the pool each year.

It is headquarters for a far-reaching Red Cross youth swim program that brings children from southern Klamath County, northern Siskiyou and Modoc counties for lessons under accredited instructors. In 1958, 620 children took 10 lessons each, transported to the pool by buses. The small charge made for use of the pool makes it largely self supporting, paying for labor and chemicals.

Mrs. Artie Mae Johnson and Mrs. Amy Kolkow are in charge of the pool and instruct the swimming classes.

In 1954 the building once occupied by the Malin Cheese factory, located on the park ground, was bought and remodeled into a public meeting place and library. It is now used nearly every day without charge for meetings and public functions. The building contains two meeting rooms, public library and fully equipped kitchen.

Cost of the land and cost of construction has totaled about \$210,000 the pool and bath house, \$125,000. The board of directors estimate

(Continued on Page 15)

P Best Wishes
TO
MALIN
ON THEIR
50th ANNIVERSARY
From Your ...

Pacific Supply Cooperative

"We're Growing With The Klamath Basin"

Our best wishes to the members of the prosperous, up-and-coming agricultural community of which Malin is the center. Our longtime business association with the Malin community has been a pleasant one which we hope to continue. Again ... Congratulations to Malin on a half century of progress!

SAVE TIME ... MAKE MONEY

Drop In At The "Circle P" ...

**Petroleum Products, Fertilizers,
Chemicals, Feed & Seed**

P Pacific Supply Cooperative
... Sure Sign for Farmers

Klamath Falls - Phone 2-4456 • Tulelake - Phone 7-1931
Hatfield - Phone Merrill 2189, Tulelake 7-1151

Furniture Wows Public

MIAMI BEACH, Fla. (UPI)—The furniture in Miami's new air terminal is as popular as its jet planes.

"Everyone who sees the furniture gets sort of goggle-eyed," said Frank Fitzgerald, chief engineer for the aluminum firm (Adams Engineering Co.) which produced it.

Travelers have ordered it for their homes, and the company plans to offer it to hotels, motels, doctors and other institutional buyers.

Chairs are gold anodized aluminum, couches are upholstered in turquoise, orange and "maple sugar" colored plastic. No welding joints are noticeable. The makers claim the furniture will last just as long as those old wooden benches travelers once sat on—and it won't show its age.

John Block, 21-year-old apprentice jockey, is a brother of veteran rider Henry Block.

Drugs

Liquors

Sundries

**Veterinary Supplies
Medicines**

Tulelake, Calif.

Ph. 7-1512