

Welfare Assistance Slate Shows Encouraging Drop

An important—and expensive—aspect of the county's welfare has shown an encouraging dip already this month.

But whether the reduction will stick, and whether it eventually will mean better times for the hard-pressed welfare treasury, still is in doubt.

Mrs. Julia Brown, county welfare administrator, said the decrease in the department's general assistance program—a big item in the budget.

As of the first of May, she said, the county had 176 cases on its general assistance rolls. That compares, in a steadily reducing case load, with 286 cases in March and 219 in April.

And the reduction is increasing. As yesterday, the load was down even further to 156 cases—almost a record low.

The high level of employment in the county at this time of the year is the reason, Mrs. Brown said, and the reason for greater employment is favorable weather.

The weather has been unseasonably favorable—or at least it was until last Friday's snow.

Further emphasis on the change may be found by comparing those figures with cases of May a year ago. At that time the county handled 360 general assistance cases.

Whether the happy trend will continue depends, of course, upon employment. And there are many factors affecting employment. But a paradox lies in the future, too.

If employment remains high here but stays low in the rest of the state and in neighboring states, Klamath County may suddenly become a job-seeker's Mecca. Should that happen, people looking for work will flood into the county and general assistance cases will shoot up.

There is another aspect to be considered, too, Mrs. Brown said, and that is money.

Persons on general assistance are acutely aware of service cut-

backs because of a fund shortage—a critical cutback because of a critical shortage. Will the fewer cases in Klamath County mean a return to normal services?

It depends upon conditions over the state, Mrs. Brown said. General assistance funds, medical

funds and some other program funds are shared by state and county—70 per cent by the state and 30 per cent by the county.

A massive shortage in state funds, and a severe cutback in an emergency appropriation, forced the state to reduce its services

critically. Medical expenses were pared to the absolute minimum and the allotments for food already down to 85 per cent of "standard" subsistence, were cut to 75 per cent. The latter cut got the county to thinking about distributing federal surplus foods—a

plan still possible if the foods are available.

If the pressure all over the state relaxes as it has in Klamath County, it is probable that more funds will be available for food and medical care and drugs. That money will be distributed proportionately

over the state.

But if the rest of the state still faces high welfare demands, the enforced cuts no doubt will stay in force.

For general assistance, Klamath County spent \$12,997 in March this year, \$8,786 in April and has \$11-

\$62 to spend in May. It looks good on the surface, but "we may run into trouble again," Mrs. Brown said, "because of restrictions in transferring (state) funds." It looks good for the county, but how good it is depends upon how good it is everywhere.

Meet Report To Be Heard

The city's two Toastmistress Clubs will hear at their next meetings reports on a regional conference in Bellingham, Washington, last weekend.

Representatives of the two clubs were Eva Cook and Reba Martz of Mt. Mazama and Rowena McDonald, Margaret Davies and Ramona Smith of Ewauna.

Among conference activities was a regional speaking competition among winners from 11 councils in Alaska, western Canada and the Pacific Northwest. Margaret Davies of the Ewauna club represented this council in the contest won by Moira Anderson of Seattle.

The Ewauna club placed first in the program division and second in the yearbook division in the "Club of the Year" contest.

Official delegates voting in the business session were Mrs. Cook and Mrs. Smith. Mrs. Martz was named to a regional election committee.

Participants in council officer training workshops were Mrs. McDonald, newly-elected first vice chairman of Council 4, and Mrs. Martz, second vice chairman.

Canadian Council 1 was conference hostess.

Queen Liliuokalani, last Hawaiian monarch, wrote the haunting song, "Aloha Oe."

PENNEY'S

ALWAYS FIRST QUALITY!

OPEN FRIDAYS 'Til 9 p.m.

GIVE MOTHER A BETTER GIFT

thanks to Penney's wonderful values!



FAMOUS MAKE JEWELRY SPECIAL PURCHASE!

Simulated pearls! Aurora pins! Plastic flowers! Moonstones! Frosted Stones! Tailored pastels! Chalk white beads! Earrings! Necklaces! Bracelets! Pins!

PENNEY PLUS VALUE \$1 plus federal tax

GREATER THAN EVER BEFORE!

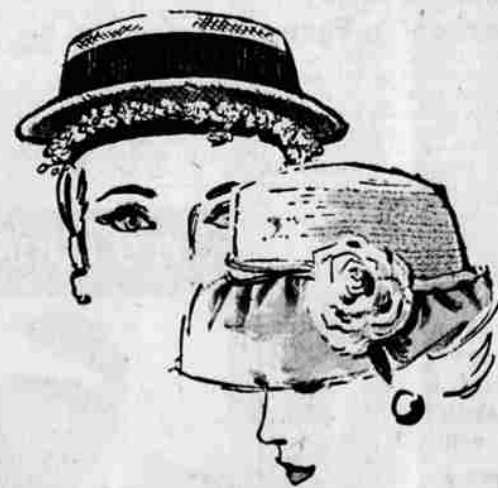


dresses she'll love for MOTHERS DAY

The most wonderful selection you've ever seen and purchased especially with Mother in mind! Crisp new cottons, practical no-iron jerseys, chiffons, voiles, wash and wear cottons, terrific blended fabrics. And talk about color! From basic greys to bold rich prints. At Penney's you'll find them in her size . . . her figure type. Buy the finest at down-to-earth prices . . . values that are hard to believe. Thrill her with a new dress from Penney's!

3⁹⁸ to 12⁹⁵

SECOND FLOOR



mothers day Millinery For Mom

The nearest way to a mother's heart is a crisp, new spring hat. Bring her in . . . let her make her own selection . . . you pay the bill . . . she'll love you for it. Truly an outstanding group of hats especially purchased for this event. All her favorite styles, colors, fabrics, shapes.

2⁰⁰

SECOND FLOOR

give Mom hosiery ...



because they're Penney GAYMODES you can't buy better tailored nylons

Tinted Seamless Gaymodes for Summer's Head-to-Toe Look! Mother will love the flattery of delightful Gaymode® sheers that give her outstanding wear, thanks to a special double-loop construction. Give her Gaymodes that have everything, the sheerness she wants, combined with the wear she wants! In exciting colors, too! Suntan, Beige, Glo, Pebble, Grey Mist, Blue Mist. Proportioned sizes 8 1/2 to 11.

98^c pair

BUY 3 PAIRS FOR 2.94

MAIN FLOOR



Colorful, Lightweight gift robes FOR MOM!

3⁹⁸ to 5⁹⁵

Never have you seen such a heavenly collection of new spring robes to delight her on Mothers Day morning . . . so feminine . . . so colorful. Never has Penney's brought them to you at such remarkable prices. She'll look more beautiful in her precious robe from Penney's in the style she loves most. Misses and women's sizes in a marvelous selection of colors and fabrics.

SECOND FLOOR

MOTHER'S DAY BUY!



7-piece set: 10-inch covered skillet 3-quart covered saucepan 3-quart double-broiler insert 3-quart saucepan hanging rack

PENNEY-REVERE SET

STAINLESS STEEL COPPER CLAD SET

12⁸⁸

7-Pieces

Made by Revere for Penney's! High-gauge stainless steel, even-heating copper clad bottoms. Vapor-seal lids for modern "waterless" cooking.

ALL FLOORS



let Mom type her own ticket this Mother's Day!

... give her an Olympia Precision Portable! She'll love it for her letters and lists, recipes and notes. Best of all, with an Olympia she can still keep that warm personal touch . . . note the graceful **Vertical Type Face** above . . . just one of the many Olympia offers. Beautifully-designed, it's a breeze to operate . . . comes fully-equipped with the most advanced features for easier, faster, finer typing. Seven smart colors that complement any decor. Comes complete with handy, lightweight carrying case. Costs just pennies a day—for a gift she'll cherish and use for years!



Carrying Case Included 123⁹⁸ Including Fed. Tax

Olympia

Yes! We have Kern Plastic Cards, Pen & Pencil Sets and other exclusive gifts for Mother.

We Give S&H Green Stamps

Jones' Office Supply

624 Main

Phone TU 2-4408

SHOP PENNEY'S...YOU'LL LIVE BETTER, YOU'LL SAVE!