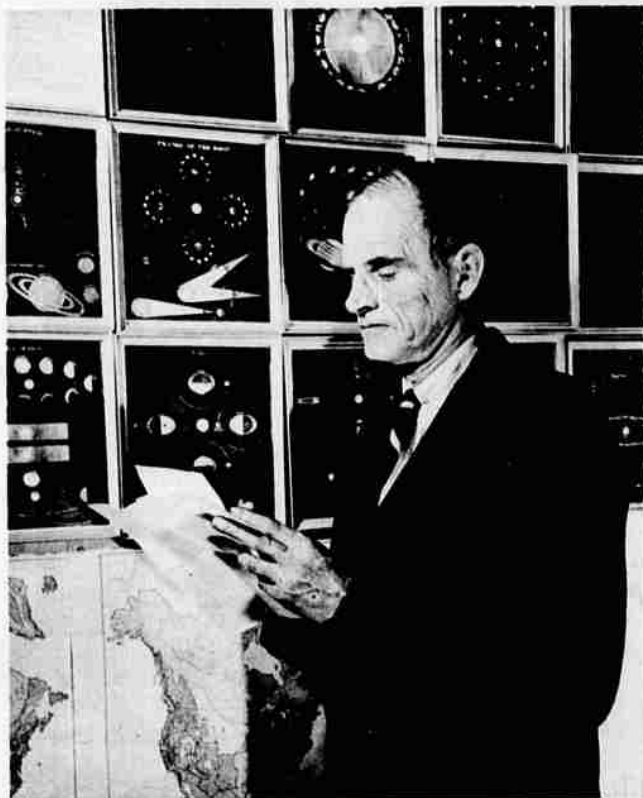




Rambling editorial and business office of Old Farmer's Almanac includes bulletin board (left) for weather and community notices.



Book's famed predictions are based on science plus secret formula.

BUY WORK AND PLAY CLOTHES TAILORED OF

STEVENS

FABRIC

BY THESE FAMOUS MAKERS AND IDENTIFIED BY THIS LION SYMBOL




This Twist Twill Lion Symbol is seen on the tags and labels of the leading shirt and pants manufacturers listed opposite. It is your guide to a fabric of outstanding quality.

Stevens Twist Twill® is Delta Finished® for clearer colors and a smoother texture. It's 100% cotton, Sanforized® and completely washable. Write to us for name of store nearest you.



Stevens, Inc., Dept. 100, 100 N. 1st St., Philadelphia, Pa. 19106