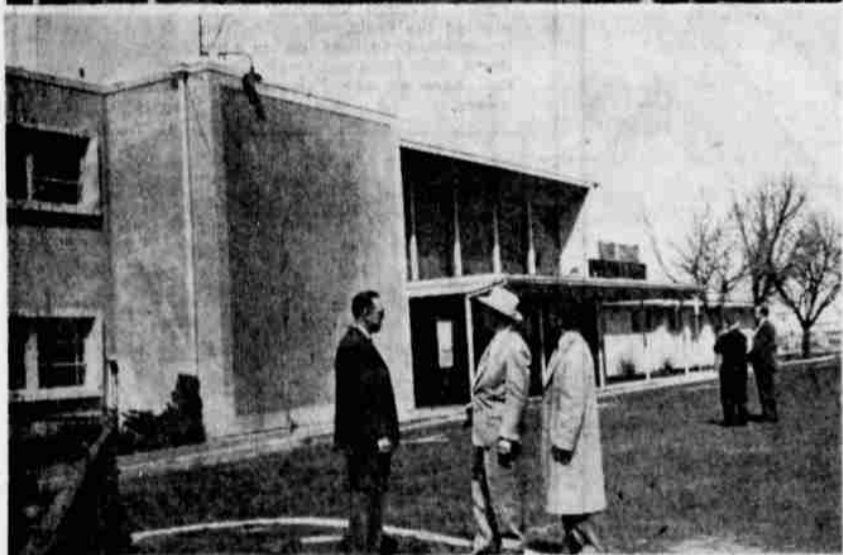
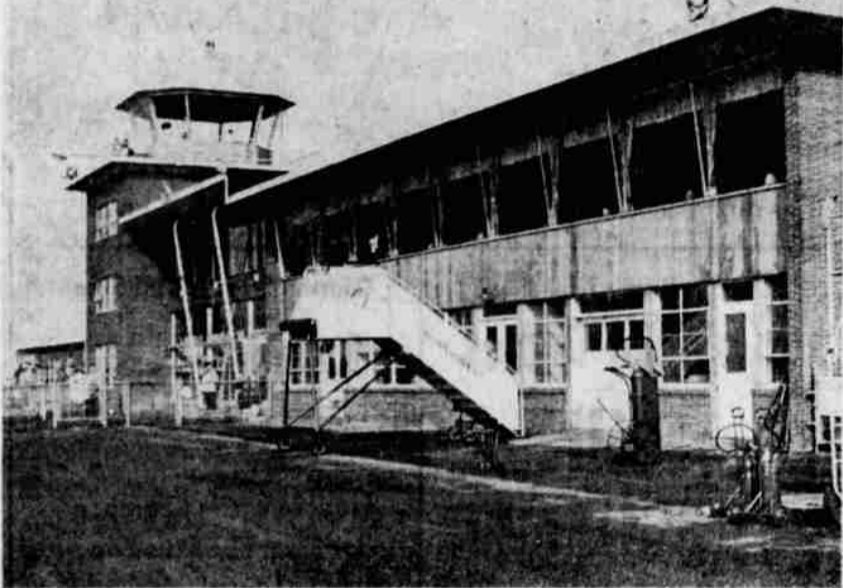
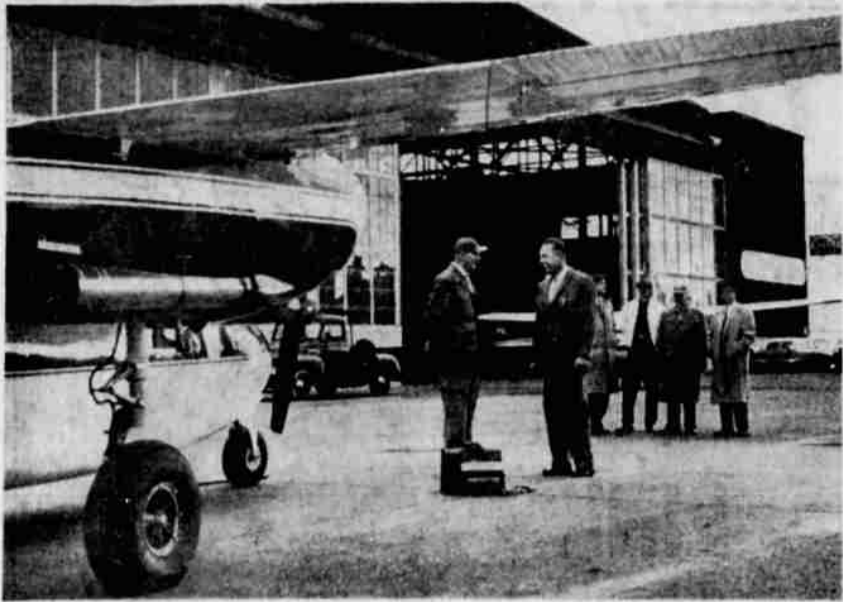


Flying Citizens Make Tour Of Air Terminals



Left Column (top to bottom)
READY FOR DEPARTURE on their flying tour are, foreground, left to right, Ned Putnam and Lester Liston, pilots; background, John Howard, Don DerMiner, Harold Jones and G. S. Vergeer Sr. Also with the group was Herald and News photographer Don Kettler.
TERMINAL BUILDING at Yakima, showing the dining room from the vantage viewpoint on the upper level with the loading ramps below.
DINING ROOM at the Yakima terminal overlooks the area where planes load and unload, providing modern adequate dining facilities.
MEETING with the city manager of Pendleton, A. J. Browning, and a tour of the Pendleton terminal building. Here, Lester Liston, left, and Vergeer, Klamath Falls city manager, right, view the exterior with Browning, center. Other members of trip in background.
LOBBY of the Pendleton terminal showing a portion of the modern seating arrangement and a view of the terminal cafe at the extreme left.

Center Column (top to bottom)
AERIAL SHOT of the plane piloted by Lester Liston as it flew over the Columbia River. Picture taken by Don Kettler from the other plane piloted by Ned Putnam.
COFFEE BREAK at the Boise terminal was on the agenda. Here, Walter York, chairman of the Boise Airport Commission, and R. E. Edlafsen, Boise mayor, talk things over with Ned Putnam in the Boise terminal.
UNUSUAL DESIGNING was incorporated into this terminal building which serves the needs of Wenatchee, Washington. The new terminal was still in the construction stage.

Right Column (top to bottom)
POWDER PUFF DERBY flyer Ginny Richardson greets (left to right) Ned Putnam, Harold Jones and Lester Liston at the Yakima airport. She plans to be in Klamath Falls in the near future for a meeting with the Sportsman Pilots Club.
PUTNAM'S PLANE rests on the landing strip in front of the air terminal building in Boise where airport and city officials turned out to welcome the flying delegation. The terminal cost about \$313,000.
INSIDE THE BOISE terminal building was this dining room on the ground level with a lounge and bar located on a second level. The Klamath Falls group meets here with Boise officials. The lobby can be seen at far left.
LOOKING DOWN the ticket counter in the Boise terminal gives an ample view of the accommodation space the terminal provides for airlines as well as car rental groups.
JOHN HOWARD gives the Pendleton lobby and ticket counter space a careful inspection. Howard was authorized by the city council Monday afternoon to proceed with plans for building a new Klamath Falls terminal for which \$100,000 has been authorized. The Pendleton terminal cost about \$75,000.

