

Backyard Garden Theme To Be Broadcast In Area

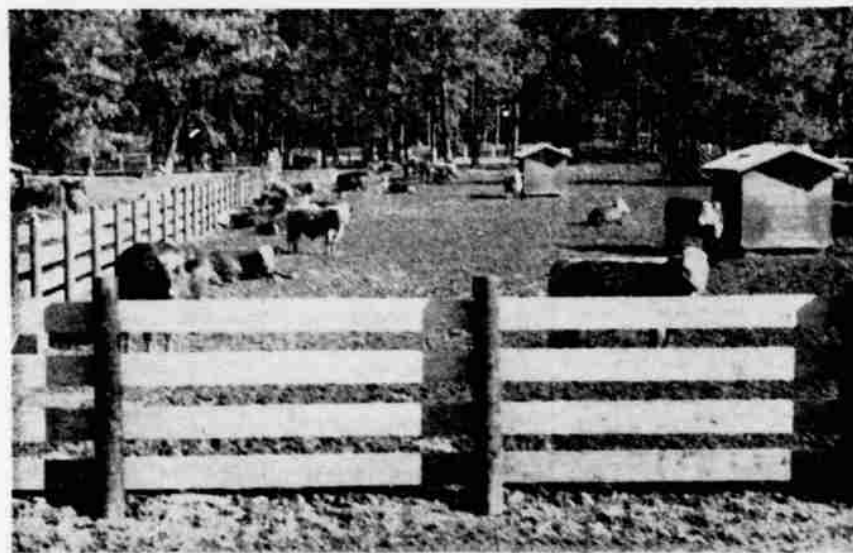
By C. A. HENDERSON
As an expanded service to more people in the Klamath Basin, the County Agent's Office is presenting a weekly news service and telecast on "Backyard Gardening." This is

a planned series on all phases of gardening, landscaping, lawn, shrub, and flower care. Problems of insect, weed and disease control will be covered as the season progresses. The subjects, timed for the season, are included each week in the Herald and News under heading, "Over the Garden Gate." In addition, every Thursday afternoon at 4:15, demonstrations are

televised locally on methods of better gardening. A list of subjects to be covered is given below. Clip them out for a reminder reference:
March — Landscaping; plant propagation; soil and water works or you; garden planning and spray schedules.
April — Landscaping materials and choices; lawn care, spring awakening; flower bed preparation and arrangement; weed control in lawn, garden and borders; garden soil preparation and fertilization.
May — Spring bulbs, gladioli Pest Control; use and cautions on insecticides and fungicides; tricks in vegetable gardens, staking, mulching; late plantings vegetables. Also Dahlia care, etc.
June — Insect and disease symptoms and cures; preparing for new lawns; cultivation, spraying, composting; summer care of fruit, flowers and vegetable gardens.



MEAT PROMOTION was the chief topic of discussion at a recent meeting at Klamath County Fairgrounds. Earl Kerns, left, livestock chairman for Klamath County Farm Bureau, presided. Speakers included those shown from left, Richard J. Nolan, San Francisco, National Live Stock and Meat Board representative; Ted Hyde of Bly, a director of Beef, Inc., and Howard Fujii of Salem, commodity director for Oregon Farm Bureau.



THESE BEEF CATTLE are among the many now being fed on the premises of the Star Ranch, site of the Fort Jones pellet mill. —Photo by McKinney



THIS BUNCH OF SHORT YEARLINGS were pictured in a field where they are being fed concentrates to speed gain. The mountain meadow is typical of the country around Fort Jones. —Photo by McKinney

TELEPHONE SERVICE
HOLLYWOOD, Fla. (UPI) — Joe Geriak, golf pro at the Hollywood Beach Hotel, gives lessons over the telephone to students who call him up from their homes up north during the summer.

ALL STOCK WALL PAPER
1/2 - 1/2 OFF
A & B PAINT
1229 E. MAIN

See Lucas Furniture For
HARD SURFACE FLOOR COVERING
Free Estimates
• Tile
• Linoleum
• Formica Work
Expert Installation
Phone TU 4-3134
LUCAS FURNITURE
195 E. Main

Commercial Printing

Snap-A-Part Forms
Continuous Forms

Business Forms

- Letterheads
- Envelopes
- Cards
- Invoices
- Statements
- Checks

Designed Especially To Fit Your Needs

All Types Of Snap Out Forms

GUIDE PRINTING CO.
Ph. TU 4-5373
12th and Klamath

SAVING HABIT

SYRACUSE, N. Y. (UPI) — School children in Syracuse and Onondaga County saved more than one million dollars in the 1957-58 academic year. Banks participating in a local school savings system said the pupil's average deposit was \$1.37 and the accounts averaged \$36. Officials said the children, from about 100 schools, stashed away \$1,277,000 during the year.

Fiberglass Boat Building Materials
The Gun Store
714 Main Ph. TU 4-3863

TORO

21" WHIRLWIND
Wind-Tunnel Mowing

The 21-In. Whirlwind gives you use in three seasons and there are no extras to buy—Leaf Mulcher, Chute and Grass Catching Bag included! Clean up in spring, mow and "sweep" your lawn in summer, mulch or bag leaves in the fall. With the new "Wind-Tunnel" housing design, you get the highest cutting efficiency. Actually cuts and out performs all other rotaries.

- Mows Grass • Cuts weeds
- Anti-scalp disc • Trims close
- Quick height-of-cut change
- Finger-tip engine controls

\$99.95 Complete
Ask about the "X" test at
J. W. KERNS
734 S. 6th 4-4197

GREATEST BY MAIL OFFER!
World's Most Beautiful Tree
BLUE SPRUCE
Three years old
Spring is the Time to Plant **4 For Only \$1.00**

Here's your very best buy in lovely, three-year-old Colorado Blue Spruce Trees. Order these trees, which are the ultimate in hardiness, charm and beauty. Planting Instructions. ORDER TODAY. Send cash, check or money order. We pay postage. No C.O.D.'s. Shipped at planting time.

15 for \$3
30 for \$5
100 for \$15

GARDEN CENTER, Dept. A-43 Fairfield, Iowa, Amt. Encl. \$.....

Name.....
Address.....
(Please Print)