

THE HOUSE OF THE WEEK

# Pushbutton Ranch a Housewife's Delight

By DAVID L. BOWEN

This is the era of the electronic pushbutton, but most of us live in houses that would have served as well in the heyday of the hand-crank.

Modern applied science has harnessed the atom, revolutionized production lines, invaded outer space.

But while man reaches for the moon, housewives reach for a dust mop. Outside of the kitchen, the American home has been relatively unaffected by the age of automatic control.

This is more the result of habit than necessity.

To show what science can do for a home, Architect Alan Wood Fraser set out to design one incorporating all of the practical aids to housekeeping and hospitality on the market today. The result is House of the Week X-37, an inviting, roomy, three-bedroom ranch.

from the master bedroom or two other locations. Pilot lights on the master bedroom panel show which lights in the house are burning. The central control switches eliminate any fumbling in the dark; whole sections of the house can be lighted at one time.

2. Intercommunication system: This links bedrooms, access doors, kitchen, terrace and garage. A hi-fi set can be cut into the intercom to bring music to bedrooms or outdoor terrace.

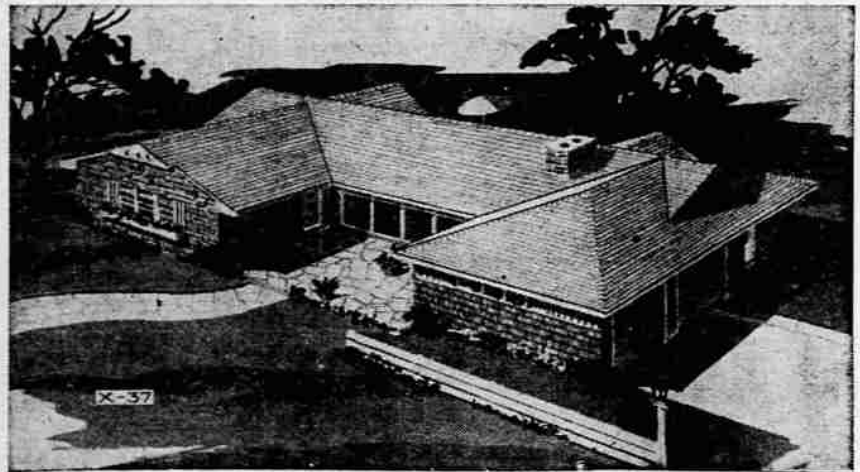
3. Vacuum cleaner outlets: Vacuum hose can be "plugged into" suction outlets connected by hidden permanent ducts to powerful motor in basement. Heavy equipment never moves even during complete house-cleaning.

4. Automatic devices center: A single motor built into the kitchen counter powers all mixing, blending and juice extracting attachments.

5. Reversible windows: All movable windows are of the type that can be flipped over so both sides can be washed from the inside.

6. Driveway heating coils: The flip of a switch heats driveway so snow will melt as it falls.

7. Electric strip outlets: Instead



**TOMORROW'S HOME TODAY:** This gracious ranch is designed to take advantage of all the modern scientific aids to home comfort and housekeeping, from a touchplate lighting system to permanent vacuum cleaner ducts. The home has three bedrooms, large living room, dining room and kitchen. Habitable area is 1,595 square feet.

**What It Offers**

Among its pushbutton comforts:  
1. Touchplate electrical system: A low voltage control circuit makes it possible to turn on or off all or any light in the house

of two or three wall plugs in a room, this equipment permits you to plug in at six-inch intervals anywhere around a room.

8. Automatic lawn sprinklers: Pop-up heads on buried tubing

**Designed For Comfort**

The floor plan has been laid out to insure that these comforts and conveniences embellish a home carefully attuned to modern demands.

The generous entertaining area has an attractive fireplace, with space for built-in TV and hi-fi on one side and an informal refreshment bar on the other. The bar can be concealed with a foldaway door.

A picture window in the living room looks out over the front terrace entrance and sliding glass doors open onto the rear terrace from the dining room.

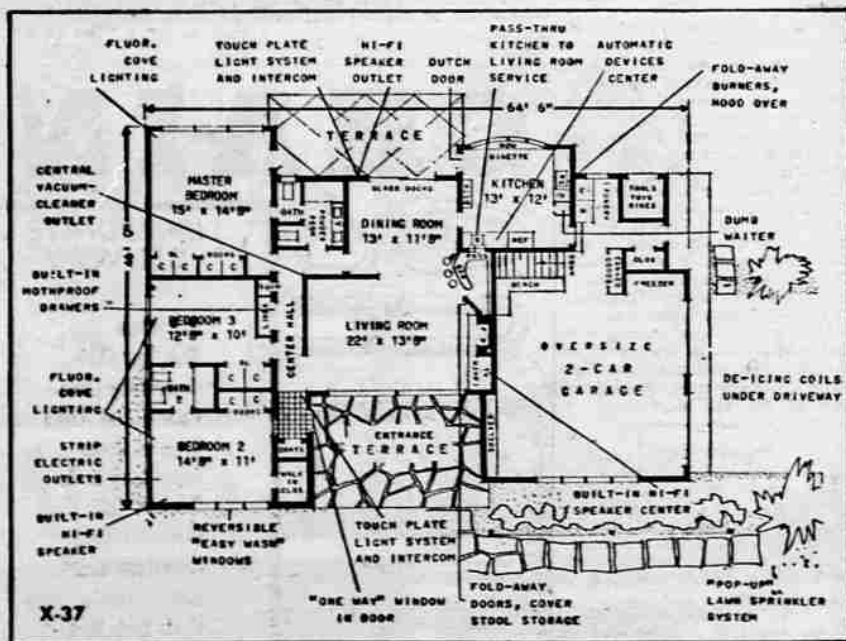
in the wall when not in use. When water is turned off, they slide down out of sight. There's a step-saving pass-through to the refreshment bar and a dumb waiter for service to storage room in basement. Adjoining the kitchen is a first floor utility room providing laundry space that's easily reached but outside the main living area.

All three of the bedrooms have fluorescent cove lighting, giving soft indirect light. An in-between bath serves the two front bedrooms.

The master bedroom in the rear has four sliding door closets and a fixed picture window wall. By using the alcove treatment and adding a second toilet, the architect gets an economical double function from the main bath: the master bedroom retains a private toilet even when the larger area is in use as a guest powder room.

**Statistics**

X-37 has six rooms, and its over-all dimensions are 64' by 46'. There are 1,595 square feet of habitable area, plus 765 in the bookkeeping. The oven is built-in over-size two-car garage and serving and cooking burner units fold back ice area.



**FLOOR PLAN:** Marginal notes detail the many modern conveniences Architect Alan Wood Fraser has called for in construction of this six-room ranch. The plan provides a luxurious entertainment area, plus a large master bedroom and step-saving service area directly off the kitchen.



**MODERN LUXURY:** Here's view from the entrance foyer across the living room into the dining room. Door in dining room wall leads to kitchen. Also visible is pass-through from kitchen to refreshment bar. The hi-fi set can send music to any point in house over intercom system.

**Send this coupon for your STUDY PLAN**

YOU CAN GET a study plan for The House of The Week by filling in your name and address on the coupon on this page and sending it with 35 cents to this newspaper.

This study plan shows each floor of the house together with each of the four elevations, front, rear and sides of the house. It is scaled at 1/8-inch per foot. It includes a guide on "How to Get Your House Built."

You can take this study plan to your bank or other mortgage lender and to your builder and get rough estimates on the cost of construction in this area, as well as an idea of the cost in relation to your budget.

With this information you will know whether you will want to proceed with construction by ordering working blueprints direct from the architect and asking for bids for the work.

**STUDY PLAN ORDER COUPON**

Building Editor:  
Enclosed is 35 cents. Please send me a copy of the study plan of The House of The Week, X-37

Name \_\_\_\_\_ (please print)

Street \_\_\_\_\_

City \_\_\_\_\_ State \_\_\_\_\_