

THE HOUSE OF THE WEEK

You Can Go Modern---or Traditional--- With This Future-Style Ranch Home

By JOHN O. B. WALLACE

This ranch comes in either modern or traditional dress to suit the taste of the homeowner. It remains a well designed house in either case.

Selected for the quality-proven House of The Week series and designated X-27, it gives you a choice of either traditional or modern exteriors without altering its room arrangement or the size of its rooms.

In either version it has 7 rooms, 2 baths and a basement — all packed into an area only slightly larger than a medium-sized house. Its seven rooms include three bedrooms.

Additionally, there is a two-car garage as well as an outside porch 12 by 15 feet 8 inches. Study plans for this design, available to readers through this newspaper, illustrate and describe fully the living plan that goes with either exterior.

The work of Architect Herbert W. Neumann, the plan boasts four entrances, including an extra rear entrance. The architect says the second rear entrance adds virtually nothing to the cost of the house but keeps the kitchen free of traffic and annoyance.

The second rear entrance permits youngsters to get to a rear lavatory, the basement, the family room or to their own bedrooms without using the kitchen. Other entrances are to the kitchen, to the front foyer and from either front or back to the outside porch.

Following are full details of design X-27 in an easy-to-follow, area-by-area description:

The Living Area

In the modern version, the living room has a sloping ceiling and full height corner windows which follow the roof line. In the traditional version, the living room ceiling is the customary height. In the modern version, the living room fireplace has a full brick or stone wall on one side and a fixed glass window on the other. In the traditional version, the fireplace has a flagstone outer hearth and a fire-

brick inner hearth. The dining room is more than 11 feet square and has a rear picture window. Sliding glass doors open from the dining room to the porch.

The Sleeping Area

The three bedrooms are all amply sized. The master bedroom has two exposures, one of them a rear picture window. The master suite has a split bath with a partition separating the bath area from the toilet and lavatory area. The family bathroom at the end of the bedroom hall has a double vanity and an alcove tub, and can be used as a guest lavatory.

Housekeeping Areas

The 10 by 15 foot kitchen is U-shaped which permits superior counter and cupboard space. The kitchen is conveniently located be-

tween the dining room on one side and the family room on the other. The rear of the kitchen, actually an alcove with a full-sized picture window, can be used as a breakfast area. Laundry and heating facilities are in the basement.

The Casual Areas

The family room, 12 by 17 ft. 4 in., is ideally located — next to the kitchen, handily reached from the entrance foyer, and it has a rear entrance of its own. It has a big rear picture window. Shutter doors separate the family room and the foyer. The covered patio porch is an outdoor living area with access to and from the garage and the main house. Its floor is scored concrete. In the modern version, this porch could be en-

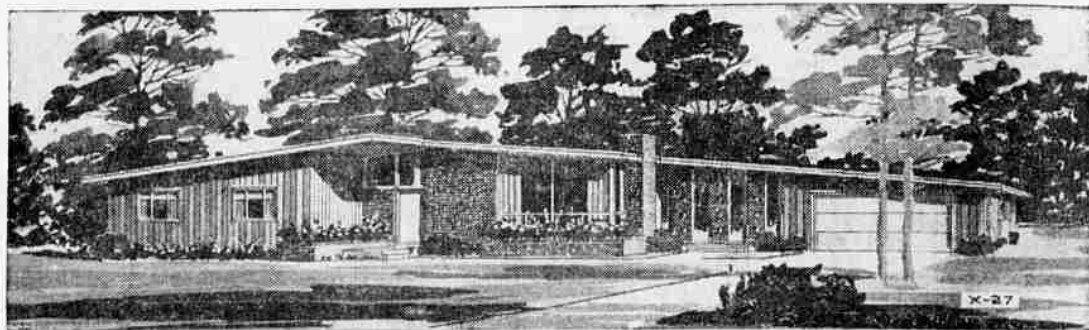
closed with louvered glass walls or screens at the owner's option. The traditional version calls for a fixed glass picture window — across the front of the living room, vented side windows and casement windows, brick veneer, brick planters and pierced brick porch columns. Additional storage space is provided in the basement.

Storage Statistics

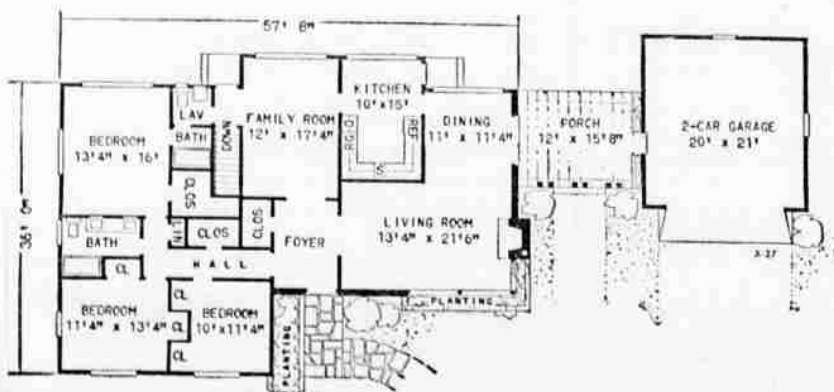
There are three huge closets (in the foyer, the bedroom hall and the master bedroom) and five other closets for a total of eight. The garage will store two cars. Additional storage space is provided in the basement.

Dimensional Data

Design X-27 has overall dimensions, including the outside porch and garage, of 44 ft. 6 in. by 93 ft. 4 in. The living area has 1,862 sq. ft., the garage 462 sq. ft.



THE MODERN VERSION of this unusual ranch design is shown in the exterior rendering above. The traditional version is shown in the rendering below. Take your choice



THIS IS THE FLOOR PLAN of design X-27 in the House of The Week series, a ranch with the choice of either modern or traditional exteriors. Although the exteriors are sharply different, the floor plans are virtually identical with either choice of outside styling.

Send this coupon for your STUDY PLAN

YOU CAN GET a study plan for The House of The Week by filling in your name and address on the coupon on this page and sending it with 35 cents to this newspaper.

This study plan shows each floor of the house together with each of the four elevations, front, rear and sides of the house. It is scaled at 1/8-inch per foot. It includes a guide on "How to Get Your House Built."

You can take this study plan to your bank or other mortgage lender and to your builder and get rough estimates on the cost of construction in this area, as well as an idea of the cost in relation to your budget.

With this information you will know whether you will want to proceed with construction by ordering working blueprints direct from the architect and asking for bids for the work.

STUDY PLAN ORDER COUPON

Building Editor:
Enclosed is 35 cents. Please send me a copy of the study plan of **The House of The Week, X-27**

Name _____ (please print)
Street _____
City _____ State _____