

MARKETS and FINANCE

Editor's Note: The market reports listed below are yesterday's markets, not today's, and are carried as a service to those subscribers in early delivery zones which make publication of daily markets impossible within the route schedule.

STOCKS WALL STREET NEW YORK (AP) — The stock market continued uneven late this afternoon with selected issues in demand. Trading was fairly active. Volume for the day was estimated at 3,200,000 shares compared with 3,800,000 Wednesday. Key stocks showed gains or losses generally within one point. The market was mixed at the start. Trading moderated and there was considerable backing and filling by prices. Armour rose about a point and Cudahy a fraction. New York Central erased a small loss and traded about unchanged. Coppers were off slightly although copper prices abroad were higher. Motors and most chemicals were off. Tobaccos, rails and aircrafts were mixed. Long-range U.S. government bonds continued their rise.

NEW YORK STOCKS BY THE ASSOCIATED PRESS Table listing various stocks and their prices, including Admiral Corporation, Alaska Juneau, Allied Chemical, etc.

STOCKTON (UPI-FSMNS) - Livestock Table listing various livestock items and their prices, including Cattle, Hogs, Sheep, etc.

PORTLAND (AP) - Grains Table listing various grain items and their prices, including Corn, Wheat, Soybeans, etc.

Prineville Firm To Build Dam PRINEVILLE (AP)—Keystone Construction Co. of Prineville Wednesday received a \$2,614,000 contract to build a dam on the Crooked River. John Hudspeth, the president of the firm, said he received notice of the contract award from the office of Sen. Richard Neuberger (D-Ore). The dam will be built 20 miles south of here. Hudspeth said there will be a work force of about 60 men.

LIVESTOCK PORTLAND (AP) — (USDA)—Cattle salable 100; supply largely slaughter cows steady; utility cows 18.00-20.00; canners and cutters 14.50-16.00; heavy cutters at 17.50; light canners 12.00-14.00; lot of mixed good and choice feeders steers 7.95 lbs 25.00. Calves salable 35; steady; choice vealers 30.00-33.00; good 27.00-29.00; standard calves and weaners 22.00-27.00. Hogs salable 150; steady to weak; U. S. No. 1 and 2 grade butchers 21.50-22.00; near 30 head at 22.00; mixed grade lots 21.00-21.50; sowers 17.00-20.00. Sheep salable 200; steady; choice wool and shorn slaughter lambs 20.50-20.75; good slaughter lambs 19.00-20.00; good and choice feeders 17.00-19.00; cull to good slaughter ewes 3.00-7.50.

KLAMATH FALLS LIVESTOCK AUCTION MARKET October 7, 1958 Receipts: Cattle 238, Hogs 46, Sheep 440. Compared last Tuesday market active on feeder cattle with prices 50 higher on heavier weights and steady on stock calves; cows 50 lower; hogs 1.00 lower.

STOCKTON (UPI-FSMNS) - Livestock Table listing various livestock items and their prices, including Cattle, Hogs, Sheep, etc.

Final Smith Rites Held ALTURAS — Funeral services were held from Kerr Mortuary October 8 for Mrs. Lena Smith, with the Rev. Karl E. Olson, pastor of the Federated Community Church officiating. He was assisted at the graveside services by the Northern Rebekah Lodge No. 298, which Mrs. Smith served as a noble grand during her membership. Mrs. Smith died at the Modoc Medical Center following a lingering illness. She was born Lena R. Gehrmann September 18, 1903, in Mt. Angel, Oregon, and was married to Barney M. Smith in 1923 in Redwood City, California. They made their home in Klamath Falls until 1934 when they came to Alturas. Mrs. Smith was president of the Alturas Moulding Company, Alturas, which the family operated until recently. She was active in community affairs, was a past president of the Alturas Business and Professional Women's Club, served three terms as district deputy of the Rebekah Assembly of California, and was vice president of the Northern Sewing Circle, a member of the Alturas Garden Club, Alturas Dinner Club, Royal Neighbors, Modoc County Historical Society and the Federated Community Church of Alturas. Besides the widower, she is survived by one son, Bernard, of Stockton; three grandsons, Bernard Jr. and Dennis Smith of Alturas and Timmy Smith of Stockton; her mother, Mrs. Clara Gehrmann Hageneur of Gervais, Oregon; six brothers, Bill Gehrmann of Ogden, Lawrence Gehrmann of Molalla, August Gehrmann of Klamath Falls, Paul Gehrmann of Bend, Frank Gehrmann of Molalla, four sisters, Mrs. Mary Richards of New Westminster, Canada, Mrs. Kate Beaucamp of Gervais, and Hazel Heaton of Klamath Falls; and a sister-in-law, Mrs. Angelina Schmitt of Orange, California.

PORTLAND (AP) — No wheat, Corn No 2 yellow 1.30 1/2; No 3 yellow 1.27 1/2; No 4 yellow 1.27; No 5 yellow 1.25-26; sample grade yellow 1.18-24; Oats No extra heavy white 64 1/2; No 1 heavy white 63 1/2; Soybeans No 1 yellow (check Chicago) 2.15; Soybean oil 10 1/4; soybean meal unquoted. Barley: malting choice 1.15-1.25; feed 97-1.07.

POTATOES CHICAGO (AP)—Potatoes, arrivals 103; on track 204; total U.S. shipments 367; supply light, demand slow; market dull; car lot track sales: Idaho Oregon Russets 3.13-3.25; Idaho Utilities 2.50-2.65; Wisconsin Round Reds 1.50; Washington Russets 2.90. SAN FRANCISCO (UPI-FSMNS) — Potatoes. Russet: U.S. 1 1/2 inch minimum 100 lbs Deschutes 2.30-2.75. LOS ANGELES (UPI-FSMNS) — Potatoes. Russet: U.S. 1 1/2 inch minimum 100 lbs Deschutes 2.30-2.75.

Police Probe Dog Shooting

A yellow Chow dog, said by neighbors to have been good to children, was shot mysteriously shortly before noon Thursday. City police said the person who fired the shot was not yet known. But they said many children were playing in the neighborhood "and the shot could well have hit one of them instead of the dog." Officers said Mrs. J. W. Lindley of Springfield, a guest in the George Lousignont home at 1103 California Avenue, reported hearing the shot. Then she heard a dog yelp. She ran outside and saw the dog lying in Uerlings Street. She said it was dying. Police said the dog was dead when they arrived. It was unlicensed, but neighbors said it had been around the area for some time, claimed it had been of no disturbance, and said it had been gentle with neighborhood children. The penalty for firing a shot in the city limits is up to a \$100 fine and 30 days in jail. The shooting is under investigation.

Smog Causes New Mishap

The malevolent pall of Washburn Way — made up of fog, smoke, haze and who knows what witches' ingredients — cast itself over that street again Friday morning, leaving yet another accident in its wake. Roland S. Clark, investigating state police officer, reported that Friday's accident occurred at about 7 o'clock, after Casimiro Perez, 2928 Wantland Avenue, had driven a pickup into the gloom. Apparently not being able to see his way, Perez stopped, Clark reported, and turned on his lights preparatory to advancing to the south. While stopped, his truck was struck in the rear by an auto driven by Robert J. Bayliss, Klamath Falls. The officer said that, although the Bayliss car was badly damaged, there were apparently no injuries, and the pickup was able to continue on its way. The pall lifted during Clark's investigation of the accident, much to the officer's relief, as he was kept jumping to get out of the way of oncoming vehicles as long as it was around. The sinister blob of darkness was held responsible by state police officers for collisions involving seven cars at about 1:30 a.m. Thursday. It "haunts" Washburn, just north of Laverne Avenue, and the police officers devoutly hope that drivers will learn to live with it, if it won't go away. "The malevolent pall of Washburn Way should be approached slowly and with caution," police advise.

Industrial Organization Asks For New Members

By TOM STIMMEL A new industrial organization, dedicated largely to repairing damage done by business in the State Legislature, presented its program to interested business leaders here last night. With its presentation, Associated Oregon Industries made a candid appeal for more members — men who will work to get better representatives in state government and "cure the abuses of Oregon law."

Voting Rolls Show Decline

Klamath County has 21,255 voters registered for the November 4 election, County Clerk Charles F. DeLap said Friday. Of the total, 11,986 are Democrats, 9,447 are Republicans and 322 have registered as non-partisan voters. The figures, just compiled, show a decrease of approximately 1,200 qualified voters when compared with registration for the last presidential election, 1956. The reduction is about evenly divided between the two major parties. At that time the county had 22,451 registered voters, of which 12,634 were Democrats, 9,427 were Republicans, and 350 were non-partisan. Registrations for the coming election are divided among 12,227 voters outside the city limits of Klamath Falls and 9,029 within the city. The breakdown: Outside the city: 6,988 Democrats, 5,057 Republicans, 181 non-partisans. In the city: 4,998 Democrats, 3,890 Republicans, 141 non-partisans. Mrs. Pauline Olfield, election clerk, added that 68 absentee ballots have been mailed from her office thus far. She asked all persons seeking absentee ballots to get their applications in as soon as possible.

Polio Count Up In Detroit Area

DETROIT (AP) — The Detroit area's polio count climbed to 734 for this year with seven new cases Thursday. The death toll for 1958 remained at 17. Five new cases were reported here, bringing the city's total to 558 compared with 174 for the corresponding period last year. There were two polio deaths reported in the city at this time last year.

HAIL DAMAGE

MEDFORD (AP)—Hail damage has forced a revision in estimates of pears that will be shipped from the Rogue River Valley this year. Shippers predicted that by the end of the year, the valley will have shipped 2,900,000 boxes. That is somewhat beneath earlier estimates.

VANDALISM

McCLOUD — Three small boys who confessed to the extensive vandalism at the new McCLOUD High School have been referred to the county probation officer.



BOB WAGGONER, right, accepts award commemorating the "over the goal" record of the Town and Country Shopping Center, from Thayne W. Cole, associate chairman of the United Fund-Red Cross drive, at Wednesday's report meeting of drive workers. Town and Country exceeded its \$1,000 goal by 24 per cent.

Burglar Robs City Library

Overdue book fines which city library patrons have been paying conscientiously disappeared in a hurry Friday morning. City police said someone entered the building through a basement window and withdrew \$14.15 from an office desk. Left behind was about \$3 lying on the desk. Police theorized that the intruder was frightened away by a cleaning truck. The entry apparently occurred shortly before it was reported by Doren Rhodes, who called police at 1:21 a.m. Another theft was reported by J. E. Welch of Glendale, Arizona, who said a pair of German binoculars was stolen from his unlocked Jeep parked on Fifth Street between Main and Pine Thursday night. Mrs. Alice Smith of 235 Cedar Street said vandals had severed her garden hose into four pieces, and police found a purse which had been left in the ladies' rest room at a gas station at Eleventh Street and Klamath Avenue.

Funeral Service Set For Semon

Funeral services for Henry Semon, who died in this city October 9, will be held from the Mt. Laki Church in the Henley District Saturday, October 11, at 2 p.m. Final rites and interment will be in the Mt. Laki Cemetery. Friends may call at O'Hair's Memorial Chapel until 12 noon Saturday.

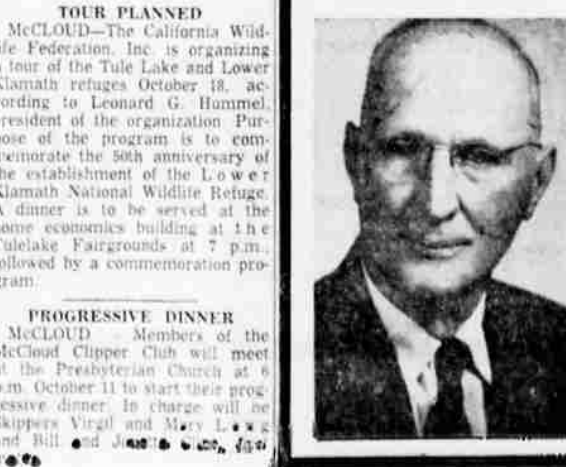
JOINT MEET

MOUNT SHASTA — Frank M. Asbell, chairman of the Mount Shasta Planning Commission, states that his group will hold a joint meeting in the city hall Tuesday evening, October 14, with the two school boards and the city park commission. The purpose is to work out an agreement for a master plan regarding future school buildings and city parks. The location and type of either will have a bearing on the other, Asbell states. He and E. W. Schilling, city engineer, have worked out a plan for streets and highways that needs only to be ratified by the city council to become an ordinance.

ELECT

Edmund M. (Ed) Chilcote Republican For State Representative Election Nov. 4, 1958

- No Increase in the Income Tax
No State Property Tax
Support for Welfare Needs, Fairview Home, Mental, and State Hospitals



Pd. Adv. - E. M. Chilcote 2037 Fremont St.

Oregon Weather

Table showing Oregon weather points with columns for Max, Min, and Precipitation. Locations include Baker, Bend, Eugene, Lakeview, Medford, Newport, North Bend, Pendleton, Portland, Redmond, Roseburg, and Salem.

Western Oregon — Fog or low cloudiness Friday night and early Saturday, but fair Saturday afternoon. Low Friday night 42-52; high Saturday 62-72 in interior and about 5 degrees cooler on coast. Westerly coastal winds 10-20 miles an hour.

Eastern Oregon — Fair through Saturday. Low Friday night 40-50 but about 5 degrees cooler in high valleys; high Saturday 60-70.

Fire Weather — High fire danger in southern and central Oregon through Saturday. Moderate but increasing hazard in northern Oregon with higher temperatures and lower humidities.

Northern Oregon Beaches — A little rain or drizzle late Friday night or early Saturday morning. Considerable fog and cloudiness Saturday morning but sunny in afternoon. Westerly beach winds 1-15 miles an hour. Temperature range 48-67.

Grants Pass and vicinity — Fair through Saturday except for morning fog. Low Friday night 40-45; high Saturday 75-80.

Baker and vicinity — Frost warning. Clearing Friday night with low 28-33 and freezing weather in early morning. Fair Saturday with high 56-62.

KU Will Be Playing Host To Educational Meeting

One of four regional conferences of the Association for Supervision and Curriculum Development to be held in Oregon this fall is taking place at Klamath Falls music teacher, who will accompany him at the piano.

Eugene's assistant superintendent of schools, Lloyd Millhollen, president of the state association, Principal W. O. Engbretsen of Russellville Elementary School, Portland, the association's general chairman for state regional conferences, and Verne Speirs will extend brief greetings. Babcock will then present a conference summation and the meeting will end.

Babcock will deliver the keynote address at the Friday night meeting, which begins at 7:30 in room 202S, with Isabelle Brixner, county schools supervisor, Mrs. Brixner is a member of the conference planning committee, of which Garry Robertson is chairman, and which also includes Beulah Elliott, teacher at Altamont Junior High School; Forrest Hawley, special education supervisor, Klamath Falls schools; Everett Peery, special education supervisor, Klamath County schools; Howard Bingham, secondary supervisor, Klamath County schools; Anne Sprague, Lake County superintendent of schools; Elliott Becken, assistant superintendent, Medford schools; and Verne Speirs, principal of the Lincoln Training School at Ashland. Speirs, who is associate chairman of the state association's regional conferences, was principal of Mills School until 1956.

Robertson will preside over Saturday morning's general session, also to be held in room 202S, during which Babcock will again address the conference. Registration opens at 8:30 a.m., and the general session at 9 o'clock. The morning schedule ends with four group meetings, each beginning at 10:30. Group leaders are Richard Lorenzen, principal, Fremont Elementary School, Lakeview; Chester Florey, principal, Wolf Creek Elementary School; Bruce Metzger, principal, Jackson Elementary School, Medford; and Mrs. Frances Henry, teacher, Lone Pine School.

The conference will end with a luncheon at the KUHS cafeteria, which begins at 12:30 p.m. Tickets for the conference are \$1.00 in advance and \$1.50 at the door. Children's tickets are 50c.

Prisoners Taken To Penitentiary

Three county jail prisoners were taken to the state penitentiary in Salem Thursday by Deputy Sheriff Fred Calfee. They were Eric Lew Hatfield, 518 Owens Street, sentenced to two years for obtaining money by false pretenses; James Herbert Hixon, 25, 300 North Fifth Street, sentenced to two years for contributing to the delinquency of a minor; and Glen Hatch, 41, Chiloquin, sentenced to four years for forgery. Circuit Judge David R. Vandenberg sentenced the three men Monday.

PIECE MEAL PUBLIC AUCTION

No Limit - No Reserve THURSDAY, OCTOBER 16th—9:30 A.M. 55 N.E. Faragut St., Portland, Oregon RUSHLIGHT AUTOMATIC SPRINKLER CO. \$136,425.48 Evaluation PLUS 1 2/3 ACRES REAL ESTATE MACHINERY, NEW PIPE FITTING INVENTORY, VALVES, CONSTRUCTION.

MACHY: 2 Landis dbl. hd. pipe threaders, 2 1/2" to 8", and 1" to 4 1/2". Chgo. and Nye pipe threaders 1 1/2" to 2", 3 Toledo Mod. 999 pipe threaders. Landis pipe cutter 4". Cot. MISC. MACHY: 2 Kohler A.C. light plants with gas engines, Logan 10" eng. lathe, Johnson hrv. metal cutting band saw, drill presses, grinders, 7 1/2 ton punch press, DeWalt Radial saws, 3 h.p. air comp., Nelson battery operated welder, 2 hydr. 150 ton gas powered jacks, gas weld sets, etc. PUMPS: 2 Jaeger 6" pumps with cont. 6 cyl. engines, 4 misc. elec. pumps.

MISC. TOOLS EQUIP & SUPPLIES: 30 elec. & pneu. tools, jack hammers, pavement breakers, impact wrenches, elec. drills, etc., Come-A-Longs, Chsin Hoist, Chain Tongs, Vibrators, Pipe Wrenches, Cutters, Reamers, Visas, Hydr. Jacks, Wheelbarrows, Battery Chargers, Lube Equip., Steel Scaffolding, Jig. Quan. Band Tools, Rope, Hose, Cable Nails, Steel, etc. ALL NEW INVENTORY: Thousands cast iron fittings, Thousands assorted black & galv. fittings, Hundreds assorted cast iron & Steel flanges, Tremendous Sprinkler Installation Supplies too numerous to mention. Quan. Underground Pipe & Fittings; Machine Bolts from 3/8x1 1/2" to 1"x4 1/2". Valves, quan. brass & steel valves, gates, globes, checks, etc. to 6".

CONSTRUCTION EQUIP.: Cranes - Kohring Mod. 304 3/4 yd. with back hoe and diesel pwr., Insley Mod. K12 1/2 yd., gas pwr., Lima 3/4 yd. with back hoe and diesel pwr., Quick-Way 1/2 yd. mtd. on Dia. T 6x6 trk., TRACTORS: 2 Cat. Mod. D7 Tractors, etc. with blade and p.c.u., one with log winch, Int'l. TD9 with blade and p.c.u. Int'l. T9 Tractor with swing crane, Int'l. TD6 with hydr. blade, Ford 3n Tractor with Hydr. Attachments, TRUCKS & AUTOS: 6 Flat Bed Dump Trucks, Dodge, Chev., & Ford, 1946 to 1951, 2 Chev. 51 3/4 ton p.u. Old's, '53 4 dr. with hvr., Chev. '53 4 dr., Dodge '49 4 dr. OFFICE EQUIPMENT: I.B.M. elec typewriter, new '55, Clary Elec. Add. Machs., Dial-A-Matic copy mach., exc. suites, 10 metal and wood office desks, 20 office chairs, 10 metal file cabinets, drafting machines and tables, etc.

REAL ESTATE 55 N.E. Faragut St., Portland, Oregon. Approx. 1 1/2 acres industrial property with thousands sq. ft. bldgs. & adjacent R.R. Spur Track serving 3 railroads. Write, Wire, Phone for Free Descriptive Brochure. MILTON J. WERSHOW COMPANY, AUCTIONEERS

7213 Melrose Ave., Los Angeles, Calif. WEbster 3-8541 621 N.E. Hasselton Pl., Portland, Oregon BElmont 4-3029 E. POTTER, Representative

TICKETS BOUGHT IN ADVANCE \$1.25; TICKETS BOUGHT AT THE DOOR \$1.50; CHILDREN'S TICKETS 50c. Save Money - Buy Tickets now at Derby's Music Co. KLAMATH FALLS ARMORY REMEMBER THE DATE Wed., Oct. 15

KLAMATH FALLS ARMORY Wed. Oct. 15 Big Show 8-10 Dance Follows

RADIO'S COAST TO COAST NBC GRAND OLE OPRY FROM NASHVILLE, TENNESSEE Presents in Person HANK SNOW VICTOR RECORDING ARTIST AND HIS FAMOUS RAINBOW RANCH BOYS

JUDY LYNN CHAMPION GIRL YODELER AND JUBILEE RECORDING ARTIST PAT KELLY Rock-Roll Artist SINGS HEY DOLL BABY AND OTHERS COUSIN HORSEFLY THE FUNNY MAN THE SHAMROCKS ONE OF THE NATION'S BETTER BANDS THE MOST COLORFUL SHOW ON THE ROAD, BARRING NONE