

Diversion Of Snake River Traps, Kills Many Salmon

SALEM, Ore. (AP)—The diversion of the Snake River Tuesday trapped and doomed thousands of Chinook salmon just below an Idaho Power Co. dam, Oregon Gov. Robert Holmes said.

Holmes said the death rate in the migrating Chinook salmon run had reached catastrophic proportions. And the peak of that run, he said, is yet to reach the area.

The governor said at least 1,000 fish died after the river was diverted yesterday. And he added that experts have told him there is no way to save thousands of salmon still trapped.

Albert Day, the director of the Oregon Fish Commission, reported to Holmes that the river was diverted into a tunnel just upstream from Idaho Power Co.'s Oxbow Dam.

That tunnel carries the river through a mountain, and bypasses a big bend in the Snake. Thus that two-mile stretch in the bend was without any fresh flow of water.

Day said the fish were in a number of pools, and that they were dying from lack of oxygen. There was no way, he added, to dip them from the river.

It was the latest incident in a controversy that began when the power company's fish trap facilities at the lower end of the diversion tunnel broke down about Sept. 1.

At that time, the flow through the tunnel was stopped, and the stream put back in its normal channel.

The salmon thus swam up-

stream to the dam itself. There, some salmon were trapped and taken upstream in tank trucks.

Holmes, however, had criticized the Idaho Power Co., saying it had arbitrarily sharply reduced stream flow, and that it had been slow in repairing fish facilities.

The governor earlier said the entire salmon run on the Snake was threatened with destruction. Yesterday he reiterated his point of view in a telegram to Tom Roach, president of the Idaho Power Co.

Roach was reported out of town, and unavailable for comment. The Idaho Fish and Game Commission, however, said the situation was serious.

Holmes' telegram to Roach said: "Since your misconceived fish trap facilities collapsed on Sept. 1, you have made repeated promises concerning the date on which those facilities would be restored. More than a month later, not a single one of those promises has been kept."

"The director of the Oregon Fish Commission told me this afternoon that the death of fish has reached catastrophic proportions and the peak of the run has not yet reached the scene of destruction."

"I am tired as the rest of the people of Oregon of reading your promises in press releases about restoring the permanent fish facility."

"What we want to know in these desperate circumstances is when you are going to get enough temporary facilities into operation to save the remainder of the run."



EVERETT GREEN, left, who has worked as a range specialist with the Soil Conservation Service in Washington state the past six years with headquarters at Colfax, is the new work unit conservationist for the Fort Rock-Silver Lake Soil Conservation District. Green was raised on a cattle ranch near Council, Idaho, and was graduated from the University of Idaho in 1949 with a B.S. degree in forestry and range management. He replaces Duane Crane, now with the Lakeview district. One of Green's plans is to visit people served by the district to get acquainted. He is shown here with C. W. Boley of Fort Rock, a district cooperater, whose hay production has shown a noticeable boost this year through conservation measures.

Husband Shoots Wife, Self In Arizona Garment Shop

PHOENIX, Ariz. (AP)—Hershel H. Crosser walked into the busy garment factory Tuesday and asked for his estranged wife. Then he pulled out a pistol and said:

EMPTY - HANDED

AHOSKIE, N.C. (AP)—The welcoming committee had returned empty-handed from an airport and it looked as if the Democratic rally would fizzle. When Gov. Luther Hodges and Sen. B. Everett Jordan (D-NC) arrived, it was in a farmer's rattling pickup truck.

"We finally hit a ride," Hodges explained.

Others explained the governor's plane had landed at the wrong airport.

"If the police come, somebody's going to get shot."

Mrs. Irene Crosser, 37, a factory supervisor, emerged from a cutting room just before Crosser gave his warning.

Detectives Gordon Selby and Bill Dowdy and factory workers told this story:

While 57 employees, mostly women, scurried for cover, Crosser stalked his wife for about eight minutes.

As they circled the long tables lined with sewing machines and fabrics, plant manager Howard Ritchart and others asked Crosser to put down his gun.

Emmit Rogers, 18, a cutter, stood between Mrs. Crosser and the man with the gun.

Mrs. Crosser hid under a table as others pleaded for her life.

Finally he appeared ready to put the gun down. Two factory workers, Cleo Little and Myrtle Pierce, escorted Mrs. Crosser to the rear.

Then Patrolmen Clarence Baldwin and Jay Larson arrived in response to an alarm.

Crosser spotted Baldwin and fired at him, barely missing his shoulder.

Then he fired two shots at his wife, being led away by the two women. She fell dead. Crosser then killed himself with a single shot in the head.

Later the detectives said Mrs. Crosser left her husband six weeks ago because he hit her with a rock.

Why did he take a gun to see her?

The detectives said he wanted her to sign some papers forfeiting her rights to his property.

OSBORN HOTEL
EUGENE, ORE.
Mrs. J. M. Early—Joe Early, Jr.
Proprietors
Thoroughly Modern

Solved - Carpet Cleaning Problem



Research has developed the answer to carpet and upholstery cleaning with new Blue Lustre. It is safe for finest carpets whether wool or synthetics. The nap is left open and fluffy. Colors return to original beauty and lustre. Blue Lustre leaves no residue to cause rapid resoiling. Clean entire carpet or just spots and traffic lanes with long handled brush. One half gallon of Blue Lustre concentrate cleans three 9x12 rugs.

Pay Less Drug Store
808 Main St.

VALLEY PUMP
AND EQUIPMENT COMPANY
COMPLETE PUMPING SERVICE
ALL MAKES REPAIRED
Call TU 4-9776 2175 So. 6th St.

Court Records
KLAMATH FALLS MUNICIPAL COURT

Billie Lada, disorderly conduct, \$25 or 12 1/2 days suspended.

Eugene Graham, drunk, \$25 or 12 1/2 days.

Frederick McGee Jr., drunk, \$25 or 12 1/2 days.

Babe Butler, drunk, \$25 or 12 1/2 days.

Clyde J. Middleton, drunk, \$25 or 12 1/2 days.

Dennis John O'Day, disorderly conduct, \$25 or 12 1/2 days suspended.

Dennis A. McCluggage, disorderly conduct, \$25 or 12 1/2 days suspended.

Arnold Paul Maier, disorderly conduct, \$25 or 12 1/2 days suspended.

William D. Iacon, disorderly conduct, \$25 or 12 1/2 days suspended.

John Hiram Elsmore, disorderly conduct, \$25 or 12 1/2 days suspended.

Robert D. Elsmore, disorderly conduct, \$25 or 12 1/2 days suspended.

KLAMATH COUNTY DISTRICT COURT

Verl Dee Rytting, false statement license application, \$100.

Gilbert DeForest Lilly, truck speeding, \$7.50.

Lillian Tidrick Welch, no operator's license, \$10 forfeited.

David N. Herres, no muffler, \$7.50.

Doretha D. J. Crume, violation of basic rule, \$12.50 forfeited.

Charlie Williams, carrying concealed weapon, plea of "guilty" 60 days county jail; suspended.

William Henry Grote, intoxicated on public highway, \$15 or 15 days; committed.

Elizabeth Emelema Nelson, intoxicated on public highway, \$35 or 15 days; committed.

Rex Hugh Morehouse, fail display license plates, \$5.

Peter Joseph Supremant, driving under the influence, 30 days county jail and fine of \$300; committed.

Pete Hamilton, assault and battery, 60 days county jail to run consecutively with 58-3847; committed.

Pete Hamilton, driving under the influence, six months and \$500; or 247 1/2 days county jail; committed.

Mark Albert Williams, intoxicated on public highway, \$100 or 47 1/2 days; committed.

Laverne Benjamin Frithelm, intoxicated on public highway, \$35 or 15 days; committed.

Herbert Cox Jr., intoxicated on public highway, \$35 forfeited.

Dewey Warren Thompson, petit larceny, 30 days county jail; committed.

WANT YOUR KIDS BOUNCING WITH PEP?

Bexel Vitamins Especially for Children In the "Forgotten Ages"—6 to 12—at only pennies a day!

Be sure your growing children get their full daily quota of vitamins to build sound bones and teeth, to have rich, red blood. Bexel comes in child-size formulas, child-size prices too.

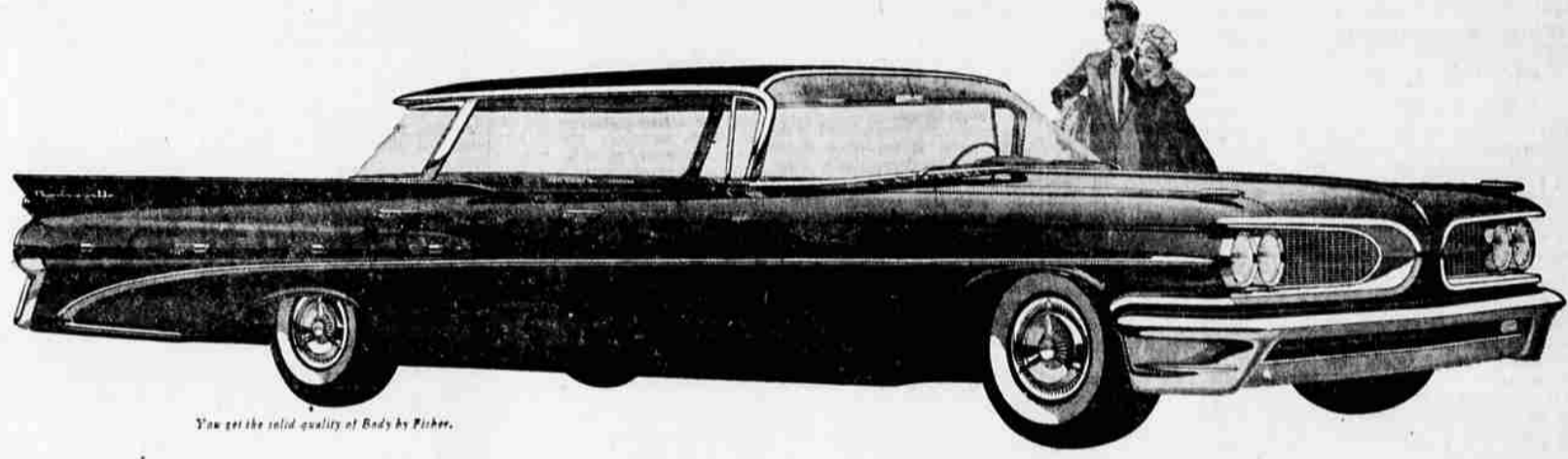
Tiny "vanilla" capsules—easy to swallow, contain 9 important vitamins including B12. Less than 3¢ a day.

Delicious orange-taste syrup—so g-o-o-d! Contains all essential vitamins plus iron. Less than 4¢ a day.

GUARANTEED! Either your child looks better, feels better after one bottle of Bexel for Children, or your money will be fully refunded.

GROWN-UPS TOO! There's a Member of the Bexel Family of Vitamins for Every Member of Your Family.

Bexel
BETTER... by McKESSON
LEE HENDRICKS
Your Neighborhood Druggist
2212 S. 6th TU 4-4321



Who in the world built this beauty...
the only car with wide-track wheels?



EXCLUSIVELY YOURS—WIDE-TRACK WHEELS

Wheels moved out 5 inches for the widest, steadiest stance in America—better cooling for engine and brakes—lower center of gravity for better grip on the road, safer cornering, smoother ride, easier handling. You get the most beautiful roadability you've ever known—in America's Number 1 Road Car!

PONTIAC! America's Number 1 Road Car!

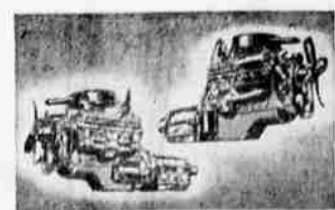
Those exclusive Wide-Track Wheels sparked a chain reaction of wonderful new ideas: You can see the trim, tailored new look... it's inches lower without sacrificing roominess or road clearance. You'll discover this beauty handles city corners and clings to country curves in a way conventional narrow-gauge cars can't hope to imitate. And the ride... the miraculous freedom from sway, dive and bounce... this is an experience in buoyant travel that you won't believe—until you try it.

But there's still more to the new Pontiac to stamp it as the big change for '59:

Vista-lounge interiors with full 360-degree visibility... seats actually wider than a sofa... Air-Cooled True-Contour Brakes for smooth, effortless control, stop after stop after stop.

The industry's most advanced V-8, Pontiac's Tempest 420, gives you spectacular new responsiveness. And there's a new companion power plant, the Tempest 420E, that delivers phenomenal extra mileage—and does it on regular octane gas!

Come in and see why no other car can possibly be so new as the new Pontiac—three great series: the magnificent Bonneville, the dramatic Star Chief and the brilliant new Catalina.



2 Great New Engines

If you love action—you get the liveliest on wheels with the new Tempest 420 V-8, acclaimed by automotive experts as America's most advanced power plant.

If you want the accent on economy, choose Pontiac's revolutionary new Tempest 420E. This new V-8 actually delivers better mileage than many smaller cars with so-called economy engines... and it uses regular octane fuel for further savings!



Seats Wider than a Sofa

Plus plenty of leg and head room. Pontiac's living-room comfort lets you change position naturally... choose the way you like to sit—not the way you have to! Pontiac seats offer still other new comfort advantages over the average sofa. They're wider, have higher backs and slant downward at the rear for maximum support under the knees for safer, more comfortable driving.



Air-Cooled True-Contour Brakes

High efficiency cooling flanges in the air stream dissipate heat far faster... 59% bigger drums absorb quick-stop heat... 25% thicker lining lasts far longer... 10% greater lining contact plus true-contour fit of lining and drum mean precision action, less pedal effort. The industry's largest front cylinders give better front and rear brake balance for smoother high speed stops.

See Ginger Rogers on the Pontiac Star Parade, Wednesday, October 15th, CBS-TV

SEE YOUR LOCAL AUTHORIZED PONTIAC DEALER

ECCLES MOTOR CO.
606 So. 6th St. Klamath Falls

ON DISPLAY TOMORROW!

"the best place to shop after all"

Miller's

FOR ONE WEEK ONLY

Annual Sale Archer Stockings

STREET FLOOR

Stockings nationally known for their sheerness, strength, and proportioned fit... not only this, they come in a wonderful choice of weights and colors. Save now or reduced prices!

Regular Pair Price!	SALE PAIR PRICE!
1.35	NOW 1.12
1.50	NOW 1.24
1.65	NOW 1.36
1.95	NOW 1.61

USE YOUR CHARGE ACCOUNT