

THE HOUSE OF THE WEEK

Colorful Western Ranch Gets Modern Trim

By JOHN O. B. WALLACE

This stylish ranch combines the atmosphere of the old and romantic west with the improvements of the newest home designs.

Numbered X-26 in the architect-designed House of The Week series, it is a modern adaptation of the cattle ranch dwelling.

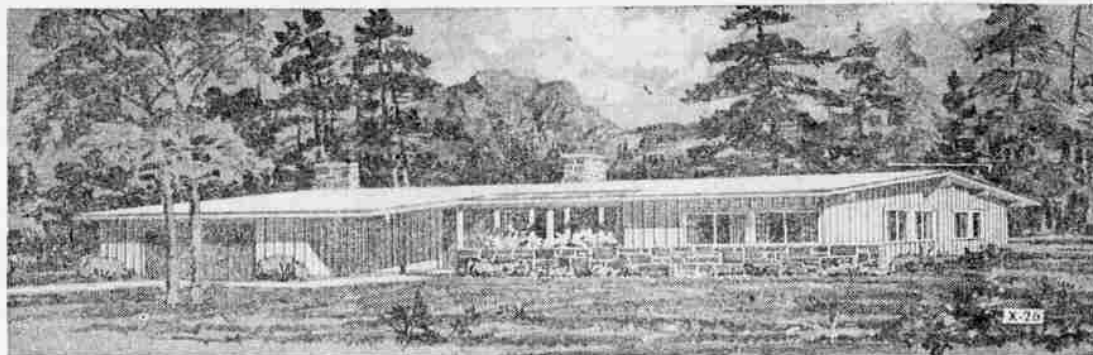
It was created, appropriately, by a western architect.

He borrowed from western lore for structural lines of the house, but elsewhere his plan was steadfastly modern. By Architect Jerry Gropp of Seattle, Washington, the design is an improvement over many ranch homes for several reasons:

(1) It completely divides the sleeping and living areas, (2) the interior abounds in a variety of decorative details, and (3) the owner has the option of building with or without a basement.

Full details on this breath-of-the-west plan, in an easy-to-follow area by area description, follow:

The beam-ceiling living room is 15 feet 6 inches by 20 feet 6 inches and has a stone raised-hearth fireplace. The beams support a wire-brushed, surfwood ceiling. The living room has a view both to the rear garden and to the front entrance courtyard. The latter is shielded from the street by a stone wall. Other living room features include cove lighting and hardwood paneling.



LONG AND LOW ROOF LINES, with large overhangs all around, add to the exterior design of this modern adaptation of an original western ranch house. Living and sleeping areas of the house are fully separated.

The dining room, 12 by 15 feet, has a slate floor and can be shut off from the living room by sliding shoji screens. An aluminum sliding door opens from the dining room onto a rear patio.

There are three large bedrooms and three baths on the one level. The basement version provides space for a fourth bedroom and two more baths. All bedrooms have sliding door wardrobe closets. The master bedroom has its own private bath with shower. Baths are arranged for economical installation of plumbing.

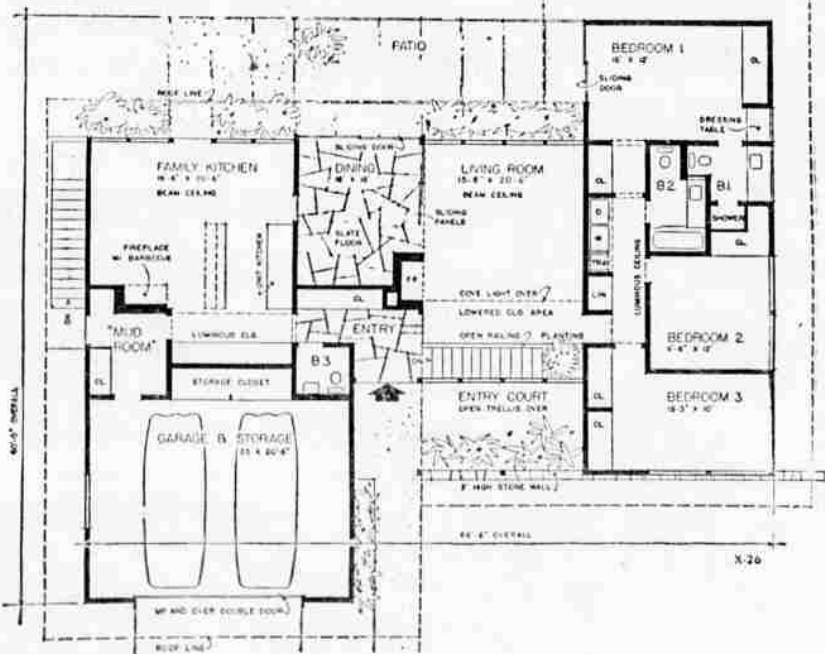
The family kitchen is 19 feet 6 inches by 20 feet 6 inches. It has a beam ceiling, cove lighting and

provides space for a large work or hobby shop, 17 by 29 feet.

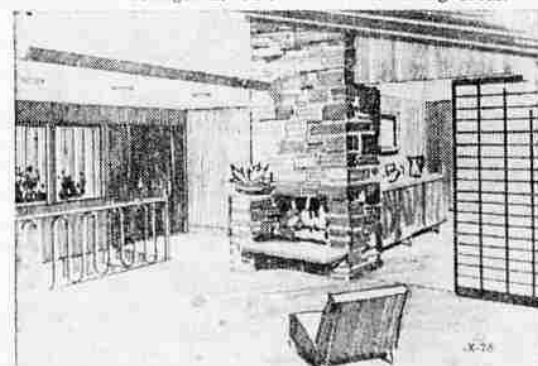
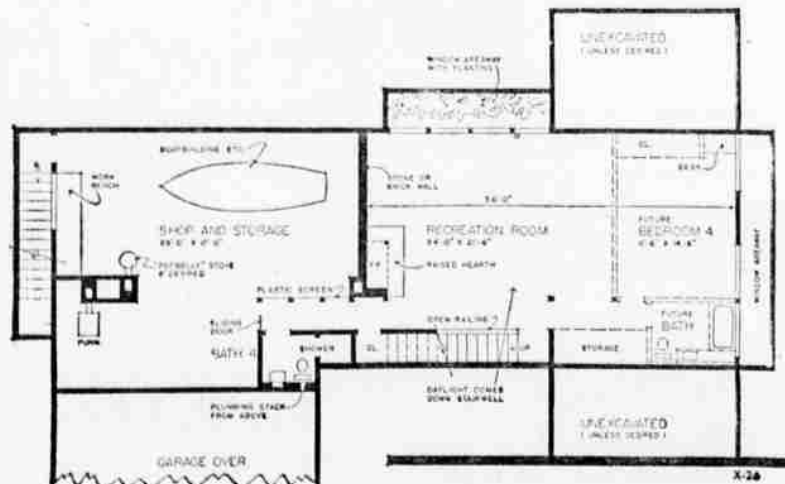
The double garage, with access to the family kitchen through the mud room, has numerous storage shelves and a large storage closet.

There are closets in the mud room, the entrance foyer and in each of the three bedrooms. In the bedroom wing, additionally, there are a linen closet and a large special closet just outside the master bedroom.

The entrance courtyard has a low, stone wall as backdrop for plantings. The plan provides for construction either with or without a basement. There is separation member the dollar cost per square foot for the basement is much less than for living areas.



THE FLOOR PLAN of the main level, in the version without a basement, is shown above. The basement version, adding a fourth bedroom, recreation room, two baths and a work or hobby shop, is shown below.



THIS VIEW from the living room looks toward the fireplace. At the left, in the basement version, is the lighted stairwell to the lower recreation room. The sliding panel at the right is between the living room and the slate-floored dining room.

Send this coupon for your STUDY PLAN

YOU CAN GET a study plan for The House of The Week by filling in your name and address on the coupon on this page and sending it with 35 cents to this newspaper.

This study plan shows each floor of the house together with each of the four elevations, front, rear and sides of the house. It is scaled at 1/8-inch per foot. It includes a guide on "How to Get Your House Built."

You can take this study plan to your bank or other mortgage lender and to your builder and get rough estimates on the cost of construction in this area, as well as an idea of the cost in relation to your budget.

With this information you will know whether you will want to proceed with construction by ordering working blueprints direct from the architect and asking for bids for the work.

STUDY PLAN ORDER COUPON

Building Editor: Enclosed is 35 cents. Please send me a copy of the study plan of The House of The Week, X-26

Name (please print)

Street

City State