

### Drive Scheduled For Bike Safety

A bicycle safety marking campaign—known for eight years as the Lite-A-Bike Program—will open again next week at seven elementary schools.

Under the program, children bring their bikes to school where three strips of light-reflecting tape are attached to bicycle fenders, one white strip in front and two red strips in the rear.

The program, sponsored by the Exchange Club in cooperation with the city police department and school officials, will open Tuesday, October 7, at the Altamont, Fairhaven, Pelican City, Peterson, Twyla Ferguson, Shasta and Summers schools.

Parents have been asked to remind their children to bring their bikes to school on that day. The program will be extended to remaining elementary schools a week later, October 14.

### Church Meet Set For OSC

The 1958 Town and Country Church Conference will be held in the Memorial Union Building, Oregon State College, Corvallis, October 14-16. Theme for study will be "Trends and Opportunities of Churches that Service Rural People."

The conference is being sponsored by the Oregon Council of Churches, Oregon Farm Bureau Federation, Oregon State Grange, Oregon State College and Extension Service, Archdiocese of Portland in Oregon, Oregon State Farmers Union and the Oregon Home Economics Extension Council.

### Four Seeking Council Posts

LAKEVIEW — Four names were submitted to fill two positions in the town council at the nominal convention Monday evening, September 29, at the Memorial Hall in Lakeview. Those named were Ross Colahan, Alvas (Buck) Elliott, Les Pardue and Ernie Freeman.

Colahan had been appointed recently to fill out the unexpired term of Councilman Roehl Watts, who had resigned because of press of business. The term will end at the close of 1958. Elliott, whose term also ends at that time, will run to succeed himself.

Those attending will have an opportunity to gain perspective on the place of the town and country church in the community today; to catch a glimpse of the responsibilities and opportunities of the church in the future; take a look at what's happening in agriculture in Oregon and what faces today's farmer; learn how to work more effectively with senior citizens and to get ideas on ways to communicate more effectively with the community.

Burton E. Berger, Corvallis, will be conference chairman.

Among the dignitaries representing the various participating groups and churches, appearing on the program will be Rev. George A. Murphy, pastor of St. Pius X Church, Klamath Falls.

### Education Unit Dedication Set

The new educational unit of Klamath Lutheran Church, 1175 Crescent Street, will be dedicated on Sunday, October 5, during the 11 a.m. service.

Dr. H. L. Foss, president of the Pacific District of the Evangelical Lutheran Church, will give the dedicatory address and officiate, assisted by Pastor L. M. Redal. The church choir will sing.

### Adventist Youth To Attend Fair

Members of the Klamath Falls Seventh Day Adventist Church Youth Pathfinder Club will attend the annual state-wide fair October 5 at the Lane County Fairgrounds, Eugene. Lawrence Denny announced plans for the Eugene visit.

The Klamath Falls club will join 50 other clubs from Oregon and Southwest Washington for the session. Attendance is expected to reach 2,000 persons.

The Pathfinder Club is sponsored by the Adventist Church to present a positive program for the building of better citizens. The club meets twice monthly for instruction in crafts, first aid and similar subjects, a program designed to fight juvenile delinquency.

Elders R. C. Schwartz and Ray Anderson, Portland, formerly of Klamath Falls, are state directors of Pathfinder and will be in charge of the fair.

The addition, a wing to the original structure has two floors to provide facilities for all Sunday School classes, three years through high school.

The Sunday School teachers and Luther Leaguers will serve a light lunch after the 11 a.m. service. The public is invited to attend the service.

**The DANMOORE HOTEL**  
1217 S.W. Morrison St.  
Portland, Oregon  
All Transient Guests. All those who come return. Rates not too high, not low. Free Garage, TV's and Radio's. Reputation for cleanliness. Reservations by L.D. Foss refunded on request upon arrival.



**WEST COAST AIRLINES** stewardess Joan Taylor, Seattle, who will be aboard one of the new Fairchild F-27 turbojet passenger aircraft that will fly regular schedules between Seattle and Klamath Falls, wears trim turquoise blue suit and perky cap which match upholstery and carpeting in plane's cabin and bands of color on exterior of aircraft. Her home is in Seattle. Miss Taylor has been with West Coast since March and on the Klamath Falls run one month. Her duties increased with inauguration of the F-27s since the craft carries 40 passengers in comparison to 24 on a DC3.

About 800 American Indians, mostly Mohawks, now live in the Red Hook section of Brooklyn.

**REALLY GOOD!**  
like home made

**SKIPPY**  
Pet STEW  
DOGS & CATS

### Unemployment Tax Rate To Stay At 2.7 Per Cent

SALEM (AP)—Oregon employers will continue to pay the 2.7 per cent payroll tax rate during fiscal 1958, the state Unemployment Compensation Commission announced today.

This rate went into effect last April 1 when the unemployment trust fund fell below the 31 million dollar "floor" because of the impact of heavy unemployment.

Last year, the payroll tax rates were as low as 3 of 1 per cent, with the average tax being 1.2 per cent.

The law requires the commission to fix the tax rates on each Aug. 31 for the following calendar year. The commission, however, needs a few weeks after that date to collect its figures.

The decision to levy the 2.7 rate was based on the fact that the fund contained \$29,152,058 on Aug. 31. But since then, it has fallen to \$27,332,072.

The drop in the fund during the past month is bad news, because the fund normally gains during that period.

John A. Norton, administrator for the commission, said he is hoping for higher employment this winter. But the fund is sure to shrink more during the winter months.

However, should the fund drop to a dangerously low point this winter, the Legislature will be meeting in January to take any emergency measures that might be needed.

The Legislature also could change the payroll tax rates, but any such change probably would not go into effect until the middle of next year.

An advisory committee of employers, labor and the public is studying the whole rate structure.

**DIES FROM SHOCK**  
PITTSBURGH (AP) — Frank Hasenkopf, 15, slipped while taking a shower Thursday night, crashed through the glass door, cutting himself so badly that he died an hour later from shock and loss of blood.

**ATTENTION**  
Merrill-Malin-Tulelake  
We will have a TV service man in your area every Tuesday from now on. For service phone TU 4-5151 or drop a card to  
**Derby's Music Co.**  
126 N. 7th St. Klamath Falls

**SUGAR 'n SPICE**

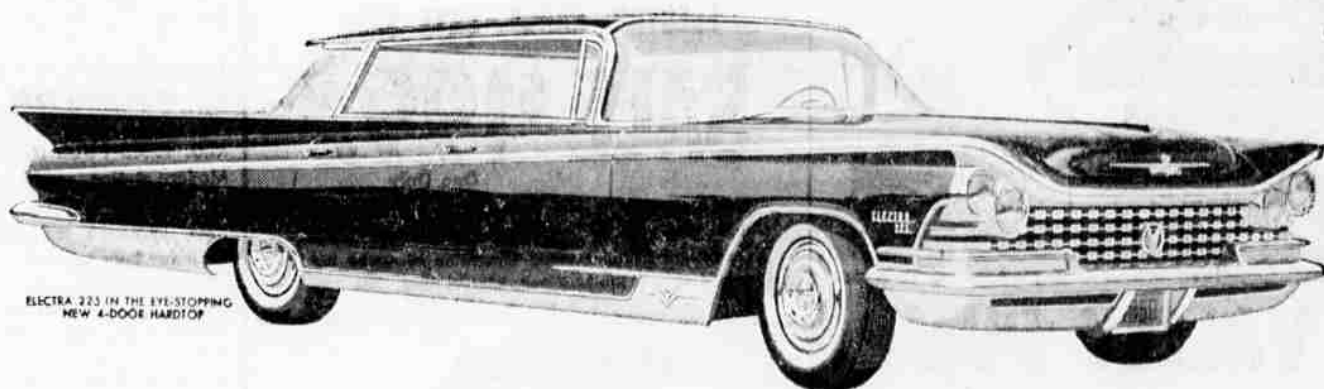
... and everything nice for the little Miss! That's what you find at **SPENCER'S**, Klamath's only exclusive children's shop. See the smart new silhouettes in coats, the picture-pretty dresses in fabrics that require so very little care. Make your selections today, or put them on lay-away at **SPENCER'S**, 619 Main, where you always get S&H Green Stamps!

**DANCE Saturday Night**  
**Red Barn**  
Dorris, California

**Music By PEE WEE STIDHAM**  
and the Butte Valley Rangers

No increase in admission price  
Dancing 9 till 1  
**90c Person**

# AMERICA HAS NEVER SAID "OKAY" SO FAST!



This makes history! In only ten days' time since its introduction, **37,429** people have bought THE CAR—the most dramatic success in Buick's history! Come in and see what your Quality Buick Dealer has for you. This year of all years, buy no new car until you see and drive—THE CAR!

## THE CAR: BUICK '59

**LE SABRE** The official Buick  
**INVICTA** The most spirited Buick  
**ELECTRA** The most luxurious Buick

A NEW CLASS OF FINE CARS WITHIN REACH OF 2 OUT OF 3 NEW CAR BUYERS

YOUR LOCAL AUTHORIZED QUALITY BUICK DEALER IN THIS AREA IS:

**JIM WINDE BUICK CO • 1330 Main Street**

**East Side Pharmacy Has Everything**

for Complete **BEAUTY CARE**

Check These Beauty Bargains!

<p><b>New Revlon Futurama Case FREE</b></p> <p>When you buy a red and pink LUSTROUS LIPSTICK</p> <p>A 3.00 Value \$ 2.00 NOW ONLY <b>2</b></p>	<p><b>CIRO ESSENT MIST</b></p> <p>Reflexions - Danaer - New Horizons - Ricochet - Jasmine - Surrender.</p> <p>\$ 2.50 and \$ 3.50</p>
<p><b>RICHARD HUDNUT CREME RINSE</b></p> <p>Regular 1.75 <b>98c</b></p>	<p><b>Ayer's Luxuria DEEP PORE CLEANSER</b></p> <p>Triple Action</p> <p>A 2.50 Value \$ 1.25 NOW ONLY <b>1</b></p>
<p><b>RICHARD HUDNUT MIST SACHET</b></p> <p>Formulayer MOISTURE CREME</p> <p>Reg. \$3.50 \$ 1.75 Size - NOW <b>1</b></p>	<p>Gemey, Lavender, Yank Clover, and Three Flowers Adds delicate fragrance to closets, linens, lingerie.</p> <p>ONLY <b>98c</b></p>

LOTS AND LOTS OF FREE PARKING

**East Side Pharmacy**  
808 East Main Phone TU 4-6776