

# THE HOUSE OF THE WEEK

## A Split With a Personality!

# Pick - Your - Plan Area Fits Owner's Own Taste

By JOHN O. B. WALLACE

Houses should have a personality all their own, too. This happy state of affairs is seldom realized except in the expensive custom-built dwellings, but the stylish three-level ranch-type split shown here is an emphatic exception to this statement.

Designed by a noted American architect and designated X-24 in the "House of The Week" series, it is a "personality house" in the sense it was created to fit a wide variety of contrary needs and tastes.

Its chief feature is a large entrance-level room—more than 400 square feet in area. This space can be adapted to many purposes according to the needs, temperament and personality of the owner.

The architect, Rudolph A. Matern, says:

"I wanted to design a home in which there is a large area—easily accessible to the outdoors and other parts of the house—that could be used or arranged according to the personal requirements of the individual owners.

"The basic living requirements can be designed into a home to satisfy the population in general. But all individuals live differently and have their own special needs.

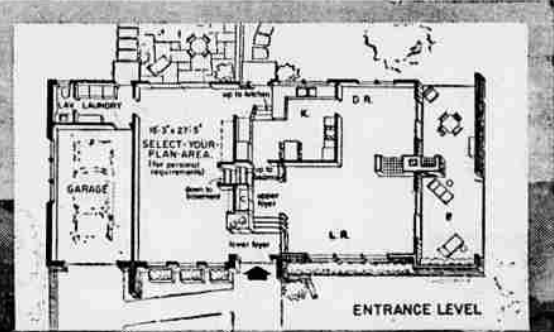
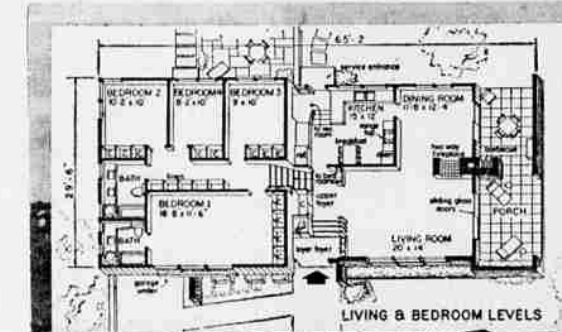
"The select-your-plan area in House of The Week design X-24 gives each owner the opportunity to build his own special needs into a basic, well-designed home."

Here are complete details of this plan in an easy-to-follow, area-by-area description:

### The Living Area

Nearly square in shape, this area includes the 14 by 20 foot front living room and the dining room. The living room has banks of glass on two walls, one of which is formed by sliding glass doors leading to an adjacent porch.

A through, two-way fireplace serves as a separation between the living and dining rooms. The outside extension of this fireplace becomes a barbecue grill on the covered porch at the right. The kitchen-dining room opens directly onto this porch through sliding glass doors.



THIS RANCH-TYPE SPLIT will fit the personality of any owner because it has a large select-your-plan area adaptable to the special needs of any individual. The floor

plans, in the inserts above, show all three levels. The basement is under the area occupied by living and dining rooms and kitchen.

### The Sleeping Area

There are four bedrooms and two baths in the sleeping wing which is separated from the living level by eight steps. Both baths are of the "Hollywood" type with built-in vanities and planters.

The master bedroom, 18 feet 8 inches by 11 feet 6 inches, has its own private bath. There is a cathedral-type window at the front of the master bedroom, with a long planter box outside.

Laundry facilities and a lavatory are on the lower level and handy near the kitchen. The heating plant and the utilities are in the basement.

### The Casual Areas

The porch at the right is covered by the extending roof, is enclosed on two sides by brick walls and runs the full depth of the house. There is a rear terrace off the lower level.

### Housekeeping Areas

The kitchen, at the rear of the house and adjoining the dining room, has the appearance of being a balconied kitchen because of its connection with the lower, adjoining level.

There are no partitions to detract from this feeling of openness. A rear service entrance is near the foot of the four steps at the back of the kitchen. The kitchen, an ample 15 by 12 feet, has this porch through sliding glass table.

### Storage Statistics

In the bedroom wing alone there are 12 closets and a five-unit bank of linen closets. A full basement lies under the living area. The garage is under the bedroom wing at the left. There are large storage closets in both the lower and upper foyers.

### Special Features

The select-your-plan area is 15 feet 3 inches wide and extends the full depth of the house, 27 feet 5 inches. There are stairs from this area to the basement. A lavatory is only a step away. Its possible arrangements are numerous.

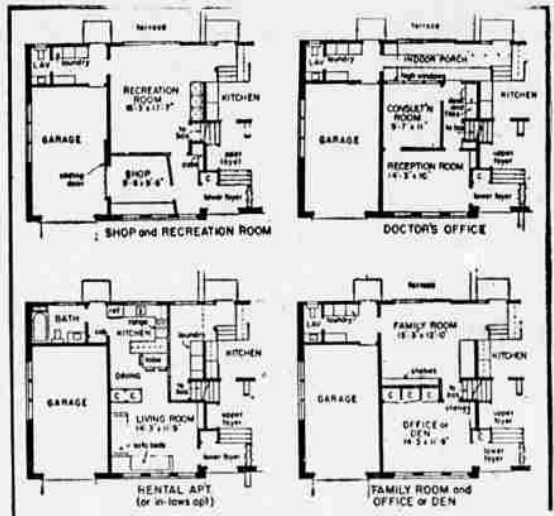
The front part could become an office and the rear a family room. Other possibilities include a doctors or professional suite, shop, dark room, maid's room, recreation room, den, hobby room, guest room, a fifth bedroom—r even a rental apartment.

### The Exterior

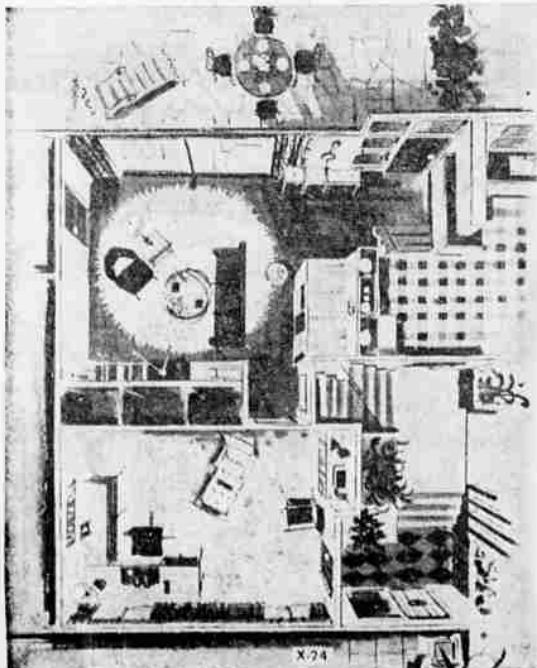
Brick and vertical boards are used in combination on all outside walls. The twindoor front entrance is protected overhead by a flat deck. A pierced masonry wall, planters and an angled trellis add decorative touches. The roof is of asphalt shingles. The chimney is brick with a concrete smoke cap above the flues.

### Dimensional Data

Overall dimensions are 65 feet 2 inches by 29 feet 6 inches. A minimum lot of 90 by 100 feet is recommended. There are 1,585 square feet in the living and bedroom levels and 541 square feet in the entrance level. The garage has 286 square feet. There are eight rooms, including four bedrooms, and 2½ baths.



HERE ARE FOUR of many possible arrangements for the select-your-plan area on the lower level. They include a rental apartment or an apartment for older relatives.



SKY VIEW of select-your-plan area shows how family room and office-den arrangement looks.

### Send this coupon for your STUDY PLAN

YOU CAN GET a study plan for The House of The Week by filling in your name and address on the coupon on this page and sending it with 35 cents to this newspaper.

This study plan shows each floor of the house together with each of the four elevations, front, rear and sides of the house. It is scaled at 1/8-inch per foot. It includes a guide on "How to Get Your House Built."

You can take this study plan to your bank or other mortgage lender and to your builder and get rough estimates on the cost of construction in this area, as well as an idea of the cost in relation to your budget.

With this information you will know whether you will want to proceed with construction by ordering working blueprints direct from the architect and asking for bids for the work.

### STUDY PLAN ORDER COUPON

Building Editor:  
Enclosed is 35 cents. Please send me a copy of the study plan of The House of The Week, X-24

Name \_\_\_\_\_ (please print)  
Street \_\_\_\_\_  
City \_\_\_\_\_ State \_\_\_\_\_