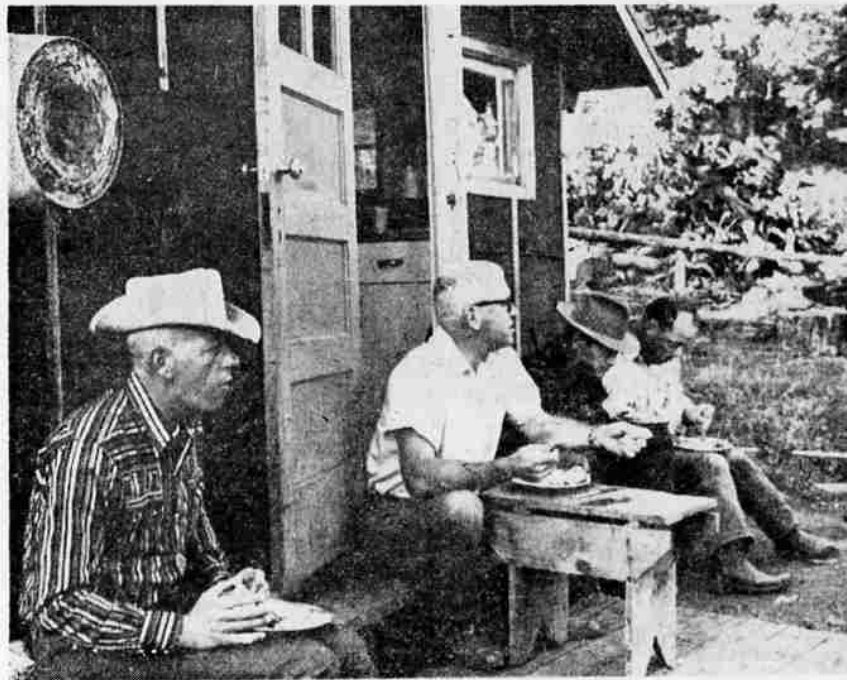




IT'S NOT ALL RIDING, as this picture shows, when the Modoc Tribe Riders take off for the high wilderness. These riders have paused on an open ridge just below Paterson Lake to rest their already-weary ponies. The horse on the right is not carrying a rifle in the scabbard. That's a fishing pole you see sticking up.



STOKING UP AT BREAKFAST against the long ride of the second day are these members of the Modoc Tribe Ride. The day was August 15, the place Pepperdine's hunting camp, the food ham and eggs and toast and coffee and fruit.



THE CHOW LINE is an important place in any outing and the Modoc Tribe Ride is no exception. Here members of the ride start through the dinner line at Pepperdine's hunting camp on the first night out. The set of moose horns on the cabin is not local.

Pneumatic Farm May Be Answer In Future Times

Strange new shapes may dot the nation's farms in not too many years. Air-supported structures, such as those above, may make every farm a greenhouse, with temperature and climatic condition controlled in plastic "bubbles." Although the idea of air structures was suggested in England shortly after World War I, it found its first practical application in radomes—spheres of coated fabric

which protect radar antennae at U.S. bases in harsh areas such as the far north. E. I. du Pont de Nemours and Co. engineers predict that advances in design and improvement in materials will provide an almost unlimited field of application. Experiments suggest first tough, lightweight "Mylar" polyester film, supported by low-pressure air blowers, could be used for structures 200 feet or more in diameter, sufficient to cover entire farm buildings or crop and animal areas. Other uses could be served with sausagelike structures, used together or singly.

PAYS THROUGH THE NOSE
HARTFORD, Conn. (UPI)—The State Tax Department figured something was in the wind when it received a perfume-impregnated check made out "to the Odor of the State Tax Commission." It was a tax payment from an apparently disgruntled perfume manufacturer and was made out to the correct number of dollars—and scents.

Farmers! Ranchers!
Stockmen!
SEE JUCK
for
Your Truck!
JUCKELAND
MOTORS, Inc.
Your International Dealer
11th & Klamath Ph. 2-2581

Own a 'Jeep'?



Authorized parts, sales
and service for all —
'Jeep' vehicles

BASIN MOTORS
424 So. 6th TU 4-7778



Boost Your Livestock Production
By Reducing Disease and Parasite Loss
LEE HENDRICKS

Your Neighborhood Druggist
2212 So. 6th St. Ph. TU 4-4321

Commercial Printing

BUSINESS FORMS

Designed Especially to Fit Your Needs

- Letterheads • Envelopes • Cards
 - Invoices • Statements • Checks
- All types of Snap Out Forms

GUIDE PRINTING CO.

1205 Klamath Ave. Phone TU 4-5373

FALL SALE

FARM

BARB WIRE

2 PT. FOREIGN 12½ GA. . . . \$8 PER SPOOL

4 PT. FOREIGN 12½ GA. . . . \$9 PER SPOOL

**SPECIAL PRICES ON
ALL FENCING AND
STEEL FENCE POSTS**

HEATON STEEL

AND SUPPLY CO. INC.
428 Spring St. Phone TU 2-3427