

Central Farmers To Place Land Under Reserve Slate

BEND—Central Oregon farmers will soon be able to place land under the 1959 conservation reserve program of the Soil Bank at annual rental rates more than one-third above those of a year ago, according to an announcement made at a meeting here recently.

The new conservation reserve rental rates were announced by Joseph E. McBurney, Gaston, chairman of the State Agricultural Stabilization and Conservation Committee. Average annual payments per acre for counties represented at the meeting are—Crook, \$13; Deschutes, \$12; Harney, \$12; Jefferson, \$12; Klamath, \$12; Lake, \$12; Sherman, 17; and Wasco, \$16.

The Bend meeting, third in a series of four scheduled throughout the state, reviewed the new conservation reserve program with county ASC committeemen, ASC office managers, county extension agents, and representatives of the soil conservation service and forest service. Around 50 agricultural leaders from the eight counties attended the meeting.

The 1959 conservation reserve is designed to add 154,000 Oregon acres to the program next year, the leaders were told. The state now has 72,000 acres under contract in the voluntary program.

Opening date for farmers to make inquiries at county ASC offices has been set for September 2, announced ASC soil bank specialist Sherwood Nicholas, Portland. Closing date for the inquiries will be October 3.

An added incentive for signing land under the 1959 program is a 10 per cent payment above normal rates for farmers who put all eligible land in the program for at least five years. Nicholas said, however, that maximum payment to any one farmer cannot exceed \$5,000 a year.

Signup under the program will be on a priority basis if total applications exceed available funds in Oregon, it was pointed out. Farmers who had all their cropland in the Soil Bank's conservation reserve or acreage reserve in 1958 will receive top priority in shifting acreage reserve land into the conservation program.

FOR SCHOOL ---

The *Kate Greenaway* Girl



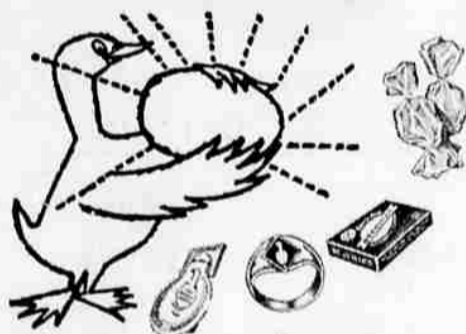
Smart as you please in her new Trapeze styled with a dash of old-fashioned charm. The preffiest paisley print by Wamsutta in basket-weave cotton. Fully crease-resistant. Red or Blue. 3-6x - 5.98

CHILDREN'S WEAR SECOND FLOOR

The best place to shop . . . after all



FOR BACK-TO-SCHOOL



Get your Red Goose Golden Egg as advertised on TV

Perfect Classmates...

boys, girls need Red Goose Shoes. Top quality shoes designed for day-long comfort, lasting good looks and rough wear. See our many new styles now. All sizes and widths.



FRILLY Black Patent or Nylon Velvet 5.95 & 6.95

SHOE DEPT. Street Floor



TIZZY Black Suede 5.95 Also hook & eye in black suede and red or golden midget pig - 6.95

OPEN TONIGHT TILL 9:00

HOME APPLIANCE saves you \$50 on the new exclusive G-E

5-CYCLE FILTER-FLO Washer



5 separate automatic wash cycles to suit all five types of fabric loads!

Touch one key, turn one dial and your washer is automatically set for proper water temperatures, speeds and time . . . for ANY washable!

\$279⁷⁹

A \$329.95 Value! Limited Offer at This Price!

<p>1 Cloud-bright laundrying of COLOR-FAST cottons, linens. Normal, vigorous washing in hot water, warm rinse water.</p>	<p>2 Gentle-as-a-lamb treatment of NON-COLOR-FAST cottons, linens. Warm wash and rinse water, ideal normal spin speed throughout cycle.</p>	<p>3 STURDY SYNTHETICS get just-right combination of warm wash water, cold rinse water and slower, and gentler spin speeds.</p>	<p>4 Angel touch treatment is given DELICATE SYNTHETICS. Feather-light slow wash, spin speeds, warm wash water and cold rinse water.</p>	<p>5 Custom-Laundry care for FINE WOOLS, SILKS. Slow, gentle washing in warm water, rinsing in cold water, spinning at normal speed.</p>
---	--	--	---	---

MATCHING DRYER REDUCED!

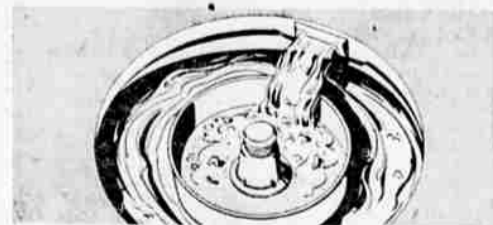
Special limited offer on this new G-E High-Speed matching dryer! New "De-Wrinkler" setting removes wrinkles from synthetics. New, automatic control conditions all washables perfectly . . . never over-dry, never under-dry! Needs no special installation.



WASH BY NUMBER!

Choose the cycle for the clothes load, press one key, and turn the dial! Automatically you get the right combination of washing conditions for all five basic fabric groups. No complicated dials to set . . . no risk of wrong wash, spin speeds, water temperatures or time.

- Automatic Rinse Dispenser
- Water saver for small loads
- Famous G-E dependability
- Big 10-pound clothes capacity
- Cold water wash key



NO LINT-PUZZ ON CLOTHES! Lint is trapped in the moving, non-clogging filter — not on your clothes! Filter is easy to remove, easy to clean.



HOME APPLIANCE CO.

YOUR GENERAL ELECTRIC DEALER

Corner of 10th and Main in Klamath Falls

Ph. TU 4-8183

For Good Used Automatic Washers - Shop Our Bargain Basement