

MARKETS and FINANCE

NEW YORK (AP)— Stocks—Higher; steels, rails improve. Bonds—Lower; governments off. Cotton—Lower; liquidation, hedging.

GRAINS CHICAGO (AP)— High Low Close Prev. Close Wheat Sep 1.82% 1.81% 1.82-81% 1.82%

STOCKS WALL STREET

NEW YORK (AP)— The stock market closed higher today. Trading became quiet after a fairly active session.

NEW YORK (AP)— The stock market closed higher today. Trading became quiet after a fairly active session.

NEW YORK STOCKS

By THE ASSOCIATED PRESS Admired Corporation 10% All Chemical 86

CHICAGO (AP)—

Broad liquidation hit grain futures fairly hard at times today and prices of all contracts sagged well below their previous closes on the Board of Trade.

Portland (AP)—

Coarse grains, 15-day shipment, bulk, coast delivery: Oats No. 2, 33 lb white 48.50-49.00.

Portland (AP)—

Coarse grains, 15-day shipment, bulk, coast delivery: Oats No. 2, 33 lb white 48.50-49.00.

Portland (AP)—

Wheat (bulk) delivered market, basis No. 1 white arrived coast: Soft White 1.94; Soft White (hard) 1.94; White Club 1.94.

Portland (AP)—

Wheat (bulk) delivered market, basis No. 1 white arrived coast: Soft White 1.94; Soft White (hard) 1.94; White Club 1.94.

LIVESTOCK

CHICAGO (AP)— USDA—Hogs 4,500; butchers 25 to 50 lower; 1-3 200-225 lb butchers 19.75-20.25.

Portland (AP)—

CHICAGO (AP)— USDA—Hogs 4,500; butchers 25 to 50 lower; 1-3 200-225 lb butchers 19.75-20.25.

Portland (AP)—

Cattle 500 calves 100; not enough slaughter steers for a price test; utility and commercial cows 17.75-20.00.

Portland (AP)—

Cattle 500 calves 100; not enough slaughter steers for a price test; utility and commercial cows 17.75-20.00.

Portland (AP)—

Cattle for week salable 2,300; trade active, fed steers 50 higher, heifers 50 to 1.00 higher.

Portland (AP)—

Cattle for week salable 2,300; trade active, fed steers 50 higher, heifers 50 to 1.00 higher.

Portland (AP)—

Hogs for week salable 1,725; trade slow, butchers mostly 2.00 lower, sows mostly 1.00 lower.

Portland (AP)—

Hogs for week salable 1,725; trade slow, butchers mostly 2.00 lower, sows mostly 1.00 lower.

Portland (AP)—

Sheep for week salable 4,000; trade moderately active, spring slaughter lambs mostly steady.

Portland (AP)—

Sheep for week salable 4,000; trade moderately active, spring slaughter lambs mostly steady.

Portland (AP)—

Lightning fires reported today the extinguishing of two small fires, one-quarter of an acre fire, presumably started by lightning.

Portland (AP)—

Lightning fires reported today the extinguishing of two small fires, one-quarter of an acre fire, presumably started by lightning.

Portland (AP)—

The first fire, put out by a crew from Seven Mile Guard Station, was located at Sharp Peak in the panhandle district, northwest of Look-out Butte and near the Crater Lake Park boundary.

Portland (AP)—

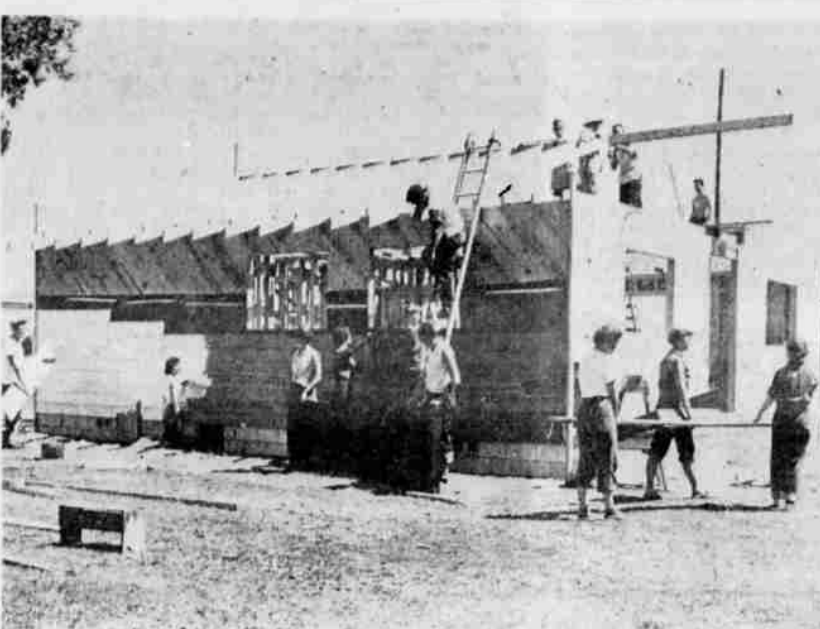
The first fire, put out by a crew from Seven Mile Guard Station, was located at Sharp Peak in the panhandle district, northwest of Look-out Butte and near the Crater Lake Park boundary.

Portland (AP)—

The second fire was located near Shell Rock and was extinguished by crews from Lake of the Woods and the Ashland District.

Portland (AP)—

The second fire was located near Shell Rock and was extinguished by crews from Lake of the Woods and the Ashland District.



THIS BUILDING in the migrant camp at Malin, built by a group of high school and college age young people, is to be dedicated Sunday, August 24, at 6 p.m.

Malin Christian Center Work Being Pushed Along By REV. ETHEN WHITMAN

An example of Christian youth at work is being exemplified by the 15 high school and college age youths who are building the Malin Christian Center.

The group of young people are erecting the all-purpose building in the Klamath potato growers' labor camp just south of Malin.

Included in the group are eight girls and seven boys, plus two adult leaders, Kathy Campbell, one of the older girls, has been on all three work caravans which have been accomplished under the youth program of the First Presbyterian Church of Stockton.

They include Casey Klooster, Joe Murphy and Alex Schuster who will be college freshmen in the fall. In addition, Marilyn Baird and George Coggin, David Baird and Lynn McKnight, all high school students, were a part of last year's work caravan.

New members this year are Valerie Harman, Terry Mills, Cindy LeRoy, Cathy Runnels, Prudy Webb and Rita Barron, who are also high school students in Stockton.

What motivates youth to leave the comforts of home, the milk shakes and rock 'n' roll for a month in a migrant labor camp?

"We want to have an opportunity to express our thanks to God for all He has done for us. . . . Others of the group have said they're here because 'It's our chance to do more than talk about Christianity and missions. Here we try to practice what we have learned in our youth fellowship, Sunday School and church' . . . or 'these people (the migrants) bring a lot of our food to our tables. Too often we say they are just bums of the road. We hope that this building will remind them and us that we are all children of God.'"

Some of the materials they are using have been supplied through the Klamath Basin Council of Churches. The finished look of the building may be lacking, but there has been a great deal of work put in on it.

Major Lawrence Slater and three councilmen, Oliver Spiker, Walter Fleet and Floyd Wynne, are serving terms that expire in 1960.

The two councilmen posts are the only city offices to be voted on in the general election. Voters will also be asked to render a decision on a request for a two mill levy for the Klamath Falls Park and Recreation Department.

City Detective Walter E. Conrady and his wife Virginia, seriously injured in a motorcycle accident, August 10, are recovering satisfactorily in Klamath Valley Hospital.

Both suffered broken legs, multiple lacerations and abrasions when their motorcycle went out of control on a sharp curve near King Cole on Highway 66. Conrady also suffered a broken collar bone.

Each expects to be in the hospital for several more weeks.

State Tax Commission Men In Klamath To Discuss Public Utility Values

Three representatives of the State Tax Commission submitted themselves to a friendly but intensive grilling by county officials Friday on a question of importance to Klamath County taxpayers.

"Why," asked County Judge C. R. Mack, "do local public utility values not show the increase we think they should?"

Mack thus set the theme for the meeting in the county court's chambers where the state officials from Salem had come to answer questions. The representatives were Paul Chambers, chairman of the State Tax Commission; James Manning, utilities section engineer for the commission; and Don Fisher, utilities section supervisor.

County Assessor Clyde R. (Hap) Caldwell called the meeting. Its purpose, he said, was to answer questions most frequently asked by taxpayers: "Why are public utilities in the county continually losing value as assessed property value when they are spending more and more money in the county each year?"

Manning explained that a major reason for apparent reduction of public utility valuations in Klamath County was because of a reduction in the ratio between actual value and assessed value.

Before the war, he said in reviewing recent tax history, utilities were assessed at about 54 per cent of their actual value. After the war, with values increasing the ratio was dropped to about 33 per cent. Now the assessment amounts to about 18 per cent of actual value.

This drop, he explained, was prompted by a legislative mandate that assessments on public utilities should reach the ratio of assessments on private property within a county by 1961. Public utility assessments, made by the State Tax Commission, therefore are gradually being reduced to meet private property assessments made by the county assessor's office.

Fisher cited figures to show how this procedure has affected public utility valuations in the county. Ten years ago, he said, utilities were valued at \$32,700,000 and were assessed at \$14,700,000. This year they were valued at \$62,757,731 and assessed at \$13,806,000.

Therefore the assessed value now is less than it was 10 years ago although the actual value has almost doubled. The reason: Ten years ago utilities were assessed at a ratio of 44 per cent of their actual value; now the ratio is 19 per cent of actual value the percentage used on other county property.

Local Marine Wins Honor

Marine Michael E. Rupe, son of Mrs. Helen E. Rupe, 627 North Fourth Street, was meritoriously promoted to the rank of private first class, and selected an outstanding man of his recruit platoon, at the Marine Corps Recruit Depot in San Diego last week.

As Pfc. Rupe stepped forward to receive his promotion, he was also awarded an expert rifleman's medal for firing 226 out of a possible 250 points. His promotion was a result of his outstanding initiative in learning, his leadership qualities and the attainment of a high degree of military proficiency during his 11 weeks of recruit training.

Prior to his four-year enlistment into the Marines in May, Rupe had attended Klamath Union High School. He will now receive four weeks' field training at the Camp Pendleton Base in Oceanside, California, where he will learn the advance phases of combat infantry tactics. Upon completion, he will be assigned 16 weeks of schooling in electronics at Treasure Island, California.



JIM PINNIGER

Pinniger In UF Position

Jim Pinniger, local construction contractor, has accepted the position of chairman of the industries division of this fall's Klamath County United Fund-Red Cross drive, it was announced today by Dick Laudenschlager, drive chairman.

Pinniger, partner in the Pinniger and Watkins construction firm, came to Klamath Falls in 1943, and has served for many years on local civic groups. Foremost among his interests have been the Boy Scouts of America; he is at present the president of their local area council. Pinniger has also served on the board of directors of the United Fund and is an elder in the First Presbyterian Church. He is a member of the Elks, the Masonic Lodge and the Scottish Rite.

In the near future, Pinniger will name six unit chairmen to assist him in reaching this year's goal for the industries division.

Baker and vicinity — Fair through Saturday. Low Friday night 48-54; high Saturday 87-93.

Northern and Central California — Fair through Saturday except fog and low clouds on coast. Little temperature change. Coastal wind northwest 8-18 miles an hour. Outlook through Sunday, mostly fair.

Eastern Oregon — Fair through Saturday. High 85-95. Low tonight 55-65.

Western Oregon — Fair Saturday except late night and morning coastal fog or low clouds and patchy early morning clouds in extreme north interior. High 85-95 in interior and 65-70 on coast. Low tonight 52-60. Coastal winds northwest, 10-20 miles an hour, decreasing locally to 25 on south coast during afternoon.

Loggers Fire Weather — Fire danger will continue high all over Oregon through Saturday except along the coastal strip. Humidity will be below 50 per cent in the afternoon in the Cascades and adjacent valleys of the northwest section.

Survivors include the widow, Mrs. Audrey M. Chambers whom he married in 1945, twin son and daughter C. Chambers Jr. and Colby Ann Chambers, 5, son, James Barney Chambers, 2nd, 4 years old; a daughter, Phyllis Harriet Chambers, 3 years old; one sister and one brother.

Funeral services were held August 16.

BARN BURNS A barn and 1,000 bales of hay belonging to Martin H. Parsons, Keno Road, were destroyed by fire early Friday morning. The county and the OTI fire departments responded to the call. Cause of the fire was undetermined.

GLADS 75¢ Per 1/2 Doz. Cash & Carry SUBURBAN FLOWER 3614 So. 6th TU 4-8188

Thieves Get Small Loot

Three more burglaries in Klamath Falls and environs demanded the attention of city police Friday. The loot, however, was minor, amounting to only \$19 in cash, several cases of beer, and a wrist watch.

Police first were called to the California Grocery, 1050 California Street, where owner William J. Easter reported a fire, then discovered that the building had been entered.

Easter told officers that four cases of beer, two cartons of cigarettes, and one carton of razor blades were stolen from the neighborhood store early Thursday morning. One carton of beer was found outside the store.

Officers surmised that the fire, which resulted mostly in smoke, had been started by the burglar who entered the store by breaking a basement window and raising a trap door.

The General Petroleum Products Company at 709 Riverside Street was entered Thursday night or Friday morning and \$19 in cash taken from a desk. City Detective Dennis W. Lilly said the intruder had removed a glass pane from a door, took only the cash and ignored other valuables, and carefully replaced the door pane when he left.

"It was," he said, "a very neat job."

O. D. Lollar told city police that his home at 2439 Orchard was entered between 7 and 9:30 p.m. Wednesday and a wrist watch was taken. Also missing, Lollar said, was a package of cookies and a loaf of bread.

Funerals HAMMOND Funeral services for Eugene Marion Hammond, 86, who died in Grenada, California, August 20, will be held in St. Augustine Church, Merrill, Saturday, August 23, at 10 a.m. Recitation of the Holy Rosary will be in O'Hair's Memorial Chapel Friday evening at 8 o'clock with Father Phelan officiating. Interment will be made in Mt. Calvary Cemetery.

THEFT Investigation continued today of Wednesday night's burglary of the Suburban Tavern, 4630 South Sixth Street. The Oregon State Police report that approximately \$300 in small denomination bills were taken from the tavern's safe. Police said that the thieves gained access to the building by cutting the screen door, then jimmying the rear door open.

PETERSEN Raymond Petersen, 76, a native of Minnesota, and a resident of this city, died here August 21. He has no survivors. O'Hair's Memorial Chapel is in charge of funeral arrangements.

DISMISSED A charge of assault with a dangerous weapon against Melvin Chiloquin, 26, was dismissed in district court Thursday upon a motion by the district attorney. Chiloquin had been arrested after a fight in a Chiloquin tavern July 14 and had been held in county jail in lieu of \$5,000 bond. The motion for dismissal was based on the failure of a complaining witness to appear in court.

Today's Best Buy for— Body Lice—Fleas on Dogs, Cats or Birds Simply sprinkle BUHACH lightly through fur or feathers—then watch the vermin roll off. Be Sure You Get BUHACH —Safe—Easy To Use—Economical—

"They Light the Musical Stage" by Joseph N. Bell

Next November, Richard Rodgers and Oscar Hammerstein II will present their 10th collaboration, "The Flower Drum Song," on Broadway. As usual, it will break several theatrical conventions—probably including box-office records. What's the secret of this fabulously successful team who, individually, are as different as two men can be? Read their amazing story, which includes fascinating glimpses of their private lives. It's in

August 14 Family Weekly

In The SUNDAY Herald and News

CHAIN! IMMEDIATE DELIVERY BBB Chain High Test Chain Super Alloy Chain Passing Link Chain Common Hooks Super Alloy Hooks Common Cold Shuts Alloy Cold Shuts Lebus Load Binders Genuine Missing Links Clevis Grab Hooks Chain and Chain Parts. Sizes 1/8" to 3/4", in stock at all times. CRANE SERVICE CRANE RENTAL 25-Ton Capacity HEATON Steel & Supply INC. 428 SPRING STREET KLAMATH FALLS, OREGON TELEPHONE 2-3427