

Rotary Livestock Show Starts



TIMOTHY SCHMECK, KLAMATH FALLS

This weekend kicks off one of the biggest farm events in the schedule for Klamath County in the form of the 23rd annual FFA, 4-H Junior Livestock Show sponsored by the Klamath Falls Rotary Club.

Actually the activity got under way yesterday with the arrival and ear tagging of livestock at the Klamath County Fairgrounds.

THE COVER

A pair of twins, Evelyn and Ellen Rajnus, pose with a pair of splendid twin sheep at their Malin home. The girls, along with a host of other youngsters, will be sending their stock to the annual Rotary 4-H show today in preparation for the judging and many other events next week.

Weighing was being done yesterday afternoon in order that all would be ready to go by today, first official day of the show.

Things will get off to a roaring start this morning with hog judging and beef showmanship at 8:30 a.m. At the same time the sheep entered will be judged. Church service will be held at 11. At 1 o'clock the dairy judging and horsemanship will get under way.

Half Population In US Licensed To Operate Car

WASHINGTON (UPI) — More than half the people in the United States are registered drivers.

A report by the Bureau of Public Roads shows that more than 80 million Americans have been issued driving permits.

It also shows that 67,135,546 autos, trucks and buses jammed the streets and highways last year—more than one for every three U.S. residents.

The 1957 total represents an increase of only three per cent over 1956. This is the smallest climb since 1932, and is less than half the average yearly 6.5 per cent gain since World War II.

During the afternoon poultry and rabbits will be received.

Monday is a full day, too, with the schedule starting at 8:30 in the morning again with beef judging and hog showmanship along with sheep and dairy showmanship and the dairy judging contest.

From 9 until 12 Monday morning the program lists receiving and arranging of flower exhibits, vegetable and food preservation exhibits, outdoor cookery and entomology exhibits.

Judging of poultry and rabbits will be held from 9 in the morning until noon. Demonstration contests will go on at 10 o'clock.

Judging of garden flower, canning, entomology and outdoor cookery exhibits will be held from noon until 5. Along with this the flower arrangement contest will be held at 1, as will the horse judging contest.

Vegetable judging contests will be held at 2 o'clock, followed by flower judging contests at 3 and food preservation contests at 4.

Livestock demonstrations will be held throughout the day for those interested and participants.

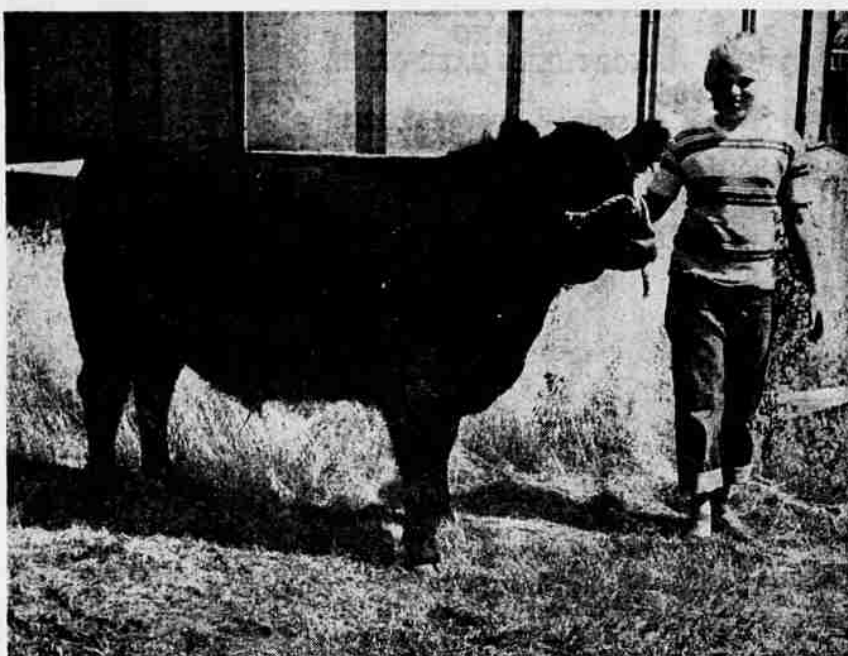
Judging will resume at 9 o'clock Tuesday morning, with special livestock contests at 10.

The big part of the show for many will come at 4:30 with the serving of the barbecue for kids, parents, club leaders and buyers where better than 2,000 people will pass along the lines of tables for their generous helpings of barbecued beef and all the trimmings as served out by Chef Gib Fillet and up by the fast-moving members of Rotary who staff the tables. Beef this year is being furnished by a group of Fort Klamath cattlemen including Seth Dixon, Hawkins Cattle Company, Dr. Helms, Joe and Pat McAuliffe, Loren Miller Company, Lloyd and S. E. Nicholson, Puckett and Scherer, Bert Stanley and William Zumbrun.

Following the barbecue and parade in the stands the annual auction sale will get under way in the Sales Pavilion, probably around 6:30 p.m.

The show is one of the major items in the farm and ranch picture in the Basin and offers hundreds of youngsters a chance to show their prize animals and other exhibits as well as the opportunity of selling them at the spirited auction.

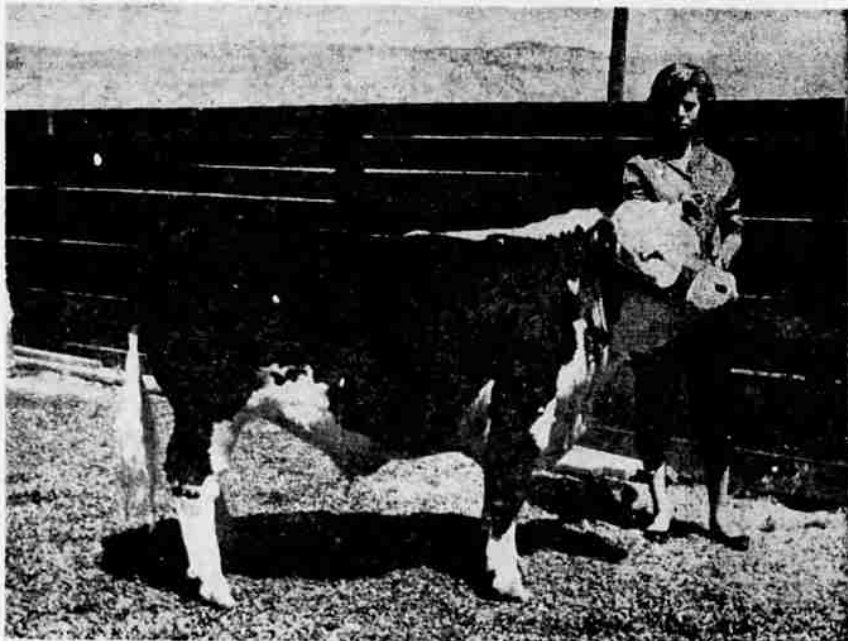
The accompanying pictures show just a few of the entrants whose stock will be entered. A full report of the sale will be carried in the Herald and News at a later date.



DIANA LYON, MALIN



LOIS CUTRIGHT, MALIN



MARY JANE FISK, MALIN