

Lakeview, Alturas Loop Trip

To the old-timers in the country a drive around the Lakeview, Alturas loop from Klamath Falls is old hat and nothing to crow about. But to the many newcomers in the area it can afford a quick glimpse of more facets of the country than almost any other short trip.

If you choose to make the trip you will find everything from immense stands of pine to the long sweep of semi-desert and the scab-rock flats typical of the country east of the mountains.

Just for a quick looksee at the possibilities let's assume that we will leave Klamath Falls and head east on Highway 66. Your first stop could well be Lost River, just the other side of Olene, where you will probably find a few patient fishermen working that lazy stream for catfish. Or it might well be a stop in Bly to chat and freshen up. A variant of the trip may be made by turning off at

town of New Pine Creek and Alturas at the end of the road. This road takes you through ranching country, past the big Willow Ranch lumber operation, winds its way through tiny canyons and over hills to offer endless vistas of desert country.

Alturas, at the junction of 395 and 299, is another lumber and cattle town. Here lie the ranches and always in sight are the Warner Range of mountains, holding in their depths some of the most gorgeous scenery left in the West today. It is from Alturas that the members of the Modoc Tribe

Ride will leave next Thursday for their annual trip up into the Warners, around Eagle Peak and down into Mill Creek for the headquarters camp. Much of this area has been set aside as a primitive area and those willing to ride or take Shank's mare will find excellent fishing and hunting in season.

From Alturas, on your way home to Klamath, you take 299 to Canby, driving west, then turn north on 139 for the run through Howard's Gulch, up onto the flat, across the tableland and so on to Jimmy Hamilton's Timber Mountain Inn.

Located at Perez (across the

highway) this is a must stop on the itinerary. Here, in a simple pumice block building, Jimmy has built up over the years one of the finest collections of old time music boxes in the country today. By dropping a coin in the mechanism you can get not only a tune but watch through the glass front while the machine-made musician plays a violin (he has one with two violins) a piano, a drum, cymbals and several other percussion instruments. Over the bar are some of the loveliest chandeliers you will be likely to see any more.

Definitely a must.

From Timber Mountain to Tulelake is a short hop. You can detour here and go through the Modoc Lava Beds, or turn off and come back by way of the state line road. In a matter of weeks the vast ponds of wildlife reserve here will be filled with literally millions of ducks and geese. A sight worth seeing.

There is too much to be seen on the trip to describe in words. Perhaps the accompanying pictures will give some idea of the country. But the only way to really get the flavor of it is to make the drive yourself.

THE COVER

Chimney Rock, outside Alturas, is a state historic spot and marks the site of an early day cabin built at the base of the rock. The builder chiseled his chimney out of the rock itself as can be seen in the picture. The cabin itself is long gone. The chimney was cut by a pioneer, the defacing initials and scars by thoughtless tourists are of a later date.

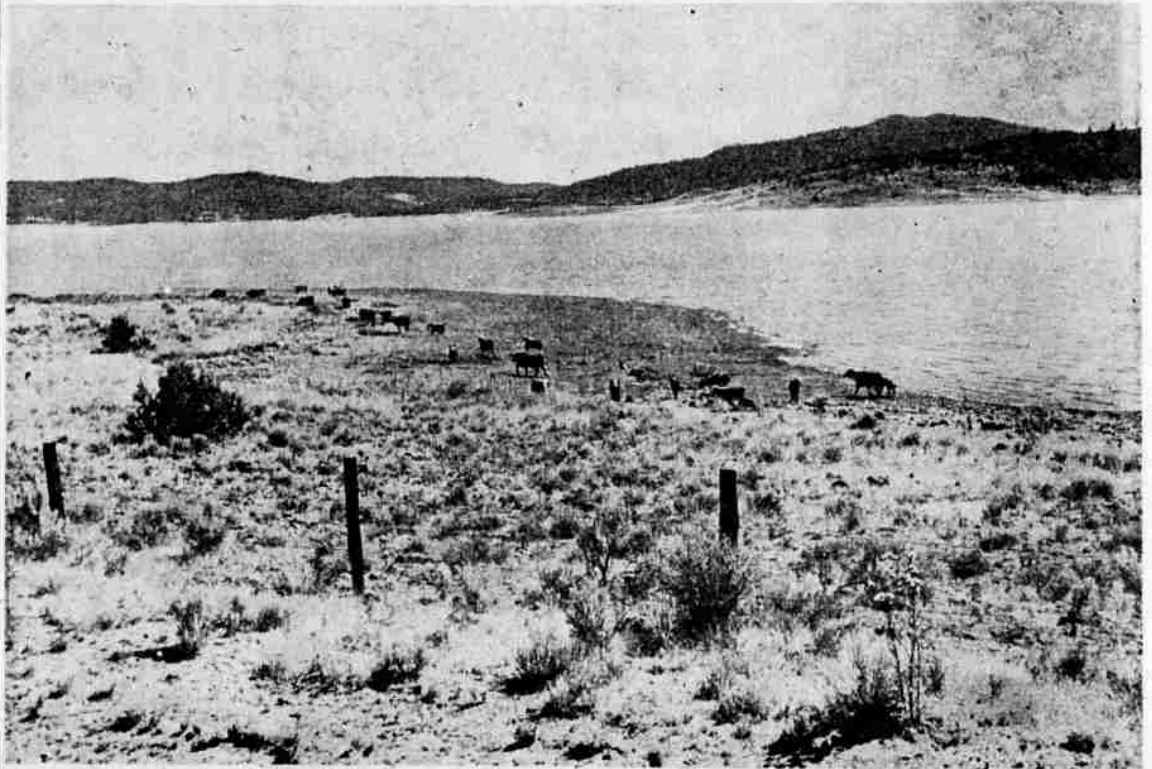
Dairy and going through Bonanza. This trip, through farmland most of the way, will drop you on the Lakeview highway again on the shoulder of Bly Mountain.

After you leave Bly, about half-way between Klamath and Lakeview, keep an eye peeled for the Sprague River Recreation Area sign. When you see the sign turn left into what looks like a rock desert and drive but a few hundred yards and you will find yourself dropping over the lip of a precipitous canyon. At the bottom winds Sprague River, bordered by grassy banks, overhanging trees and long openings in the trees along the valley floor. Picnic facilities are available here, the youngsters will enjoy a swim in the creek and the shade will be welcome on a summer day.

Leaving this spot you head on east again, over Quartz Mountain, past Drews Reservoir and on toward Lakeview. Booth Park, just past the reservoir, is another state park where picnic tables and facilities will be found. Here is a tiny little park tucked back in a stand of towering pines that offers a cool resting place.

A few miles more and you are in Lakeview, one of the friendliest towns in the world. It lies nestled at the foot of the hills, its mills spouting smoke and the smell of fresh-sawed lumber, its streets filled with real honest-to-gosh cowboys and ranchers. At the edge of town is a manmade geyser that spouts regularly (at Hunters Hot Springs) and in the canyon mouth downtown is a lovely swimming pool.

When you wind up your stay in Lakeview, and it will be a pleasant one, turn south on Highway 395 and head for Goose Lake, the



CATTLE AND WATER, a pretty sight in any Western country, are pictured here. The site is Drew's Reservoir on the way to Lakeview along Highway 66.



A LONE SUNFLOWER jutting up from a pile of broken and jumbled rock afforded the photographer an excuse to break the drive on the Klamath Falls-Lakeview-Alturas loop recently. The scene is on Goose Lake, between Lakeview and Alturas.

SORE THUMB

NEW YORK (UPI)—Louis Oswald Lavin - Gardin escaped twice within a week from immigration authorities who were trying to deport him to Cuba. The first time, he was captured; the second time, he surrendered, having decided it was useless for him to try living as a fugitive, since he must travel in a wheelchair.