

# THE HOUSE OF THE WEEK

## Emphasizing Outdoor Living

# Pool and Sun Deck Add Happy Note to Split

By JOHN O. B. WALLACE

A swimming pool, complemented by sun deck, cabana lounge, porch and a rear garden, makes this House of The Week a sure winter with outdoor living enthusiasts.

As refreshing as a cool breeze at this time of the year, the plan has three main levels, each with its own specific design features to take advantage of the pool and its surrounding area.

Designated X-16 in the House of The Week series, the plan combines ranch styling with split level room arrangement. The pool is one of its many appealing features.

The three levels work toward the outdoor living theme in this way:

The entrance, or pool level, has a terrace-family room with a wide open view of the pool. A sheltered cabana lounge is directly outside.

The dining-living room level has glass doors opening onto a porch with steps leading down to the pool area. The porch itself looks out on an expansive garden.

The bedroom level has its two main bedrooms to the rear and they have sliding glass doors which open onto a sun deck. The sun deck overlooks the pool from above.

Throughout the house, Architect Rudolph A. Matern has overlooked no detail that would contribute to comfortable living the year round.

The dining-living area is formed by in-line rooms with a 30-foot-long open space. The rooms are divided by low planters.

A fireplace is located here and the back of its chimney provides a brick wall for the kitchen.

**THIS REAR VIEW** takes in the swimming pool, the cabana lounge, the rail-enclosed sun deck, the rear porch and the

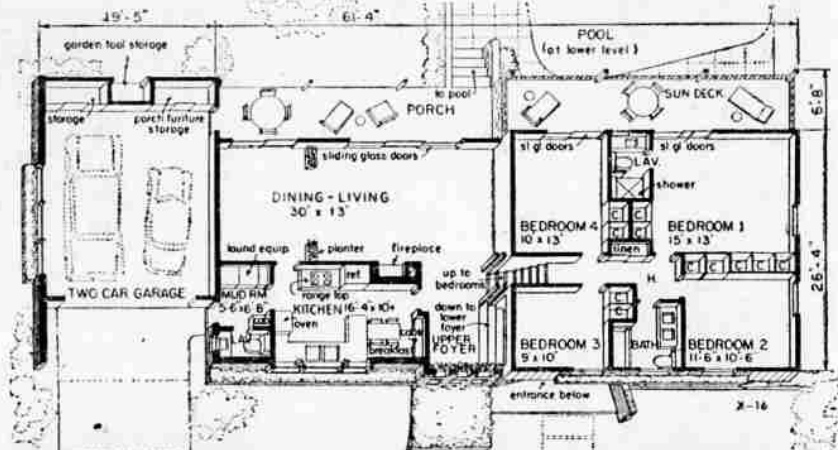
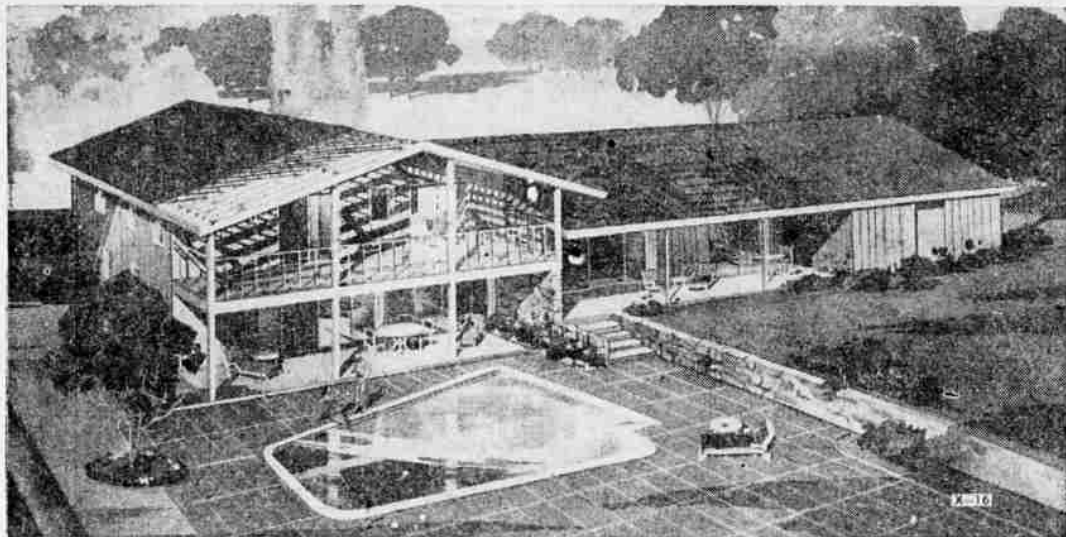
There is direct access to both the dining and living rooms from the kitchen.

One end of the kitchen opens into the upper foyer which is just five steps up a six-foot-wide staircase from the entrance foyer.

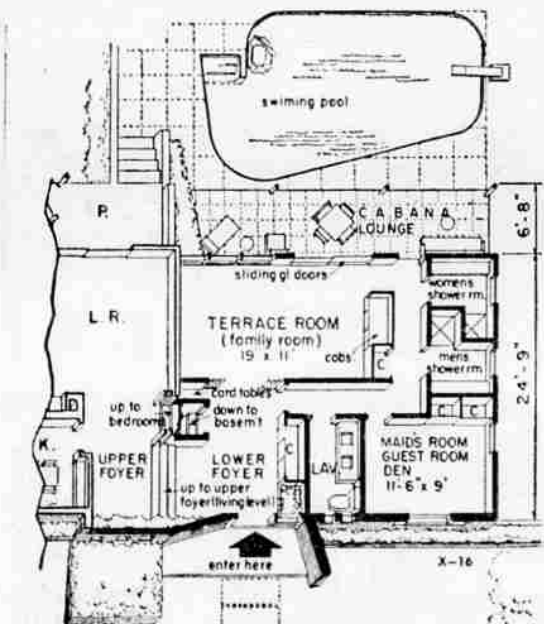
The bedroom steps lead from the upper foyer level.

Directly below the bedroom wing is the entrance level with a terrace-family room and a room which may be used as a maid's room, a guest room or a den.

garden. The bedroom wing lies forward from the sundeck. The dining and living rooms are just inside the rear porch.



**THE LIVING AND BEDROOM** levels are shown in the floor plan above. The entrance level, on the same plane as the swimming pool, is shown left.



The terrace-family room has a the cabana lounge and the area tiled concrete floor and directly surrounding the pool.

to its right are two shower rooms. There is a full-height side light one for women and one for men. A to provide light for the lower fo-

lavatory also is located on this er—and the front kitchen has a level. The cabana lounge lies be- large bay window. The garage has tween this area and the swimming a cathedral-type sash with plant- er box below.

The pool, itself, has been given Likewise adding to the exterior an interesting shape, modernistic are shutters, brick planters and in its treatment. Because of its angled, gable overhangs. The chim- irregular contour, either poured or ney is of brick and asphalt shin- sprayed concrete may be used in gles are used for the roof.

**Statistics**

House of The Week design X-16 has a total of eight rooms, including four bedrooms, plus two baths, two lavatories and two shower rooms. There are 1,567 square feet in the living and bedroom levels and 767 square feet in the entrance level. The overall dimensions of the house, including the attached garage, are 33 by 80 feet 9 inches. A minimum lot 100 by 100 feet is recommended although a larger lot would be desirable. There is a basement under the dining-living-kitchen area.

### Send this coupon for your STUDY PLAN

YOU CAN GET a study plan for The House of The Week by filling in your name and address on the coupon on this page and sending it with 35 cents to this newspaper.

This study plan shows each floor of the house together with each of the four elevations, front, rear and sides of the house. It is scaled at 1/8-inch per foot. It includes a guide on "How to Get Your House Built."

You can take this study plan to your bank or other mortgage lender and to your builder and get rough estimates on the cost of construction in this area, as well as an idea of the cost in relation to your budget.

With this information you will know whether you will want to proceed with construction by ordering working blueprints direct from the architect and asking for bids for the work.

**STUDY PLAN ORDER COUPON**

Building Editor:

Enclosed is 35 cents. Please send me a copy of the study plan of **The House of The Week**, Design X-16

Name ..... (please print)

Street .....

City ..... State .....