

THE HOUSE OF THE WEEK

Sturdy Home Inspired By Nordic Design

By JOHN O. B. WALLACE

Inspired by the best features of modern Scandinavian architecture, this small, sturdy house should become a popularity winner with budget-conscious American families.

Chosen as design X-14 in the House of The Week series, it reflects the simplicity and sound construction which have made Nordic home styling increasingly esteemed throughout the United States.

Scandinavian design elements fit in well with American living, both in furniture and architectural forms. This compact house, less than 1,300 square feet in size, makes full use of the Nordic's love for cleanliness and sturdy, natural materials.

Glass, stone and wood have major roles in home construction throughout Norway, Sweden and Denmark, and Architect Alan Wood Fraser has used all three materials to advantage in design X-14. The glass areas are large, and simple in styling, to provide maximum light and air throughout the house.

Vertical siding and a decorative front fence bring wood prominently into exterior facades.

Living Areas Are Open

Stone is to be found in the random ashlar stone, interspersing the vertical siding, and in the brick chimney and the flagstone-floored rear porch.

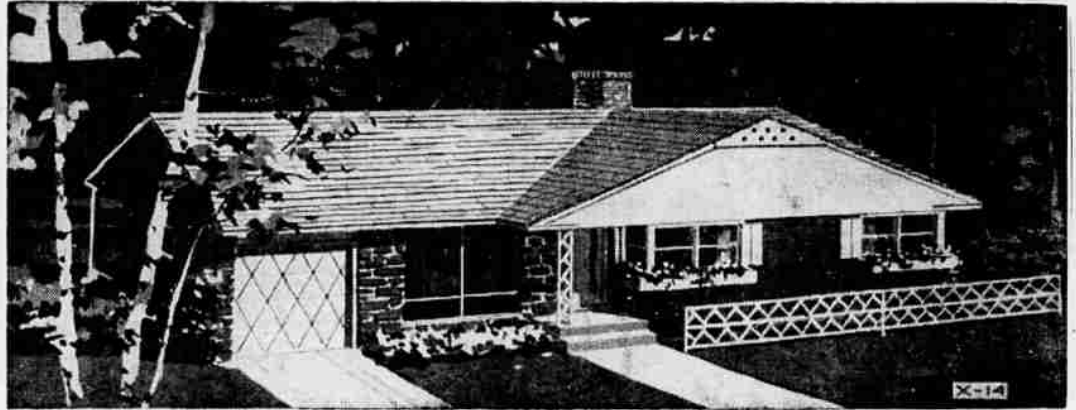
Two other elements found in Scandinavian homes were incorporated, too, in this design—X-14 adapts itself to built-in units, the open planning of living areas

and the privacy of sleeping areas. As in most Scandinavian homes, the three bedrooms utilize space to the highest degree. The living areas open into each other for maximum space patterns and therefore tend to offer greater living expanse.

There is an unaffected and home-like quality to Scandinavian architecture and the architect has captured this admirable trait with exterior touches like the white-painted fence, the flower-filled window boxes and the Swedish shutters.

Like many Scandinavian homes, the kitchen here is at the front and the living areas open toward the back. There are front and rear gardens.

As in Nordic homes, design planning in this design: The vestibule, with a large coat closet, starts what becomes an



THIS STURDY HOME, with special appeal to budget-conscious American families, has the friendly, home-like qual-

ity characteristic of Scandinavian architecture. Stone, glass and wood are used prominently throughout.

Statistics

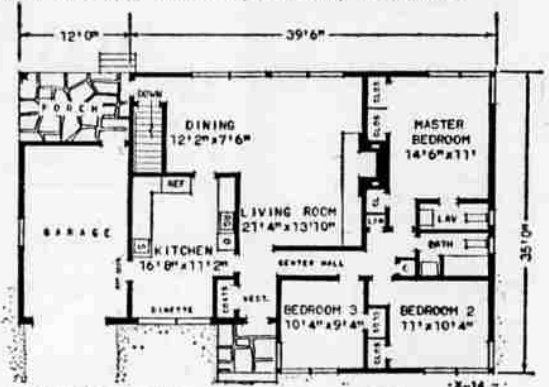
There are six rooms, including three bedrooms, plus 1/2 baths in design X-14 — all in 1,288 square feet. The garage and porch, with a much lower cost rate, total 354 square feet. The overall house dimensions are 35 by 51 feet 6 inches. A 75 by 100 foot lot is recommended.

inets and unusual and intimate lighting.

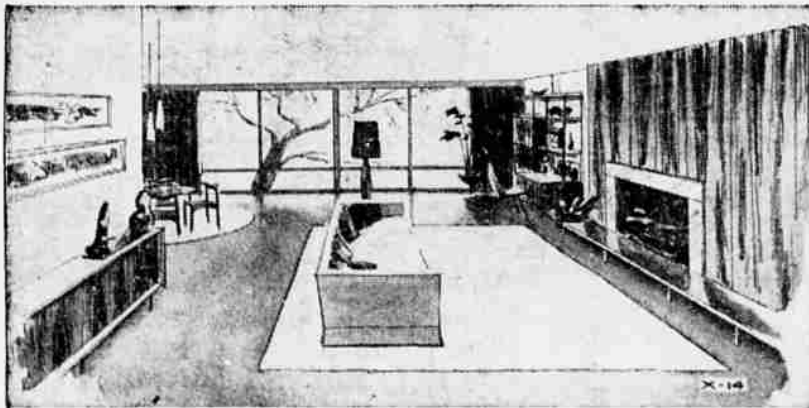
The house has the sturdy quality and the delicate detailing as well as Scandinavian design.

Unusual Traffic Pattern

A tour illustrates the expert planning in this design: The vestibule, with a large coat closet, starts what becomes an



A TRAFFIC PLAN unusual for a small home has been achieved in this winning design for the House of The Week series. The living and sleeping areas are shown above. The basement plan, not shown, includes a 28 by 25 foot recreation room, a corner bar, and a utility room with heater, laundry and workbench areas. The basement has high, daylight windows, all of which are above grade.



THIS IS THE VIEW across the living room toward the large rear picture window. The flush fireplace has a raised hearth and a striated wood fireplace wall.

unusual traffic pattern for a small same point there are stairs to home. There is direct access to the kitchen, to a center hall which entered from the rear porch and leads to the bedrooms, and to the an optional door is located between the garage and the kitchen.

There is direct service from the kitchen to the dining room and the dining room blends into the living room. There is a 21-foot dinette alcove at the front of the kitchen has fixed glass picture windows, from floor to ceiling. Adequate counters and storage cupboards complete the kitchen arrangement.

Each of the three bedrooms has inent at one side of the living room two exposures. The master bedroom has three closets and a private lavatory. The family bathroom serves all bedrooms; it also

A door leads from the dining room to the rear porch; at the atory.

Send this coupon for your STUDY PLAN



YOU CAN GET a study plan for The House of The Week by filling in your name and address on the coupon on this page and sending it with 35 cents to this newspaper.

This study plan shows each floor of the house together with each of the four elevations, front, rear and sides of the house. It is scaled at 1/8-inch per foot. It includes a guide on "How to Get Your House Built."

You can take this study plan to your bank or other mortgage lender and to your builder and get rough estimates on the cost of construction in this area, as well as an idea of the cost in relation to your budget.

With this information you will know whether you will want to proceed with construction by ordering working blueprints direct from the architect and asking for bids for the work.

STUDY PLAN ORDER COUPON

Building Editor:

Enclosed is 35 cents. Please send me a copy of the study plan of **The House of The Week**, Design X-14

Name _____ (please print)

Street _____

City _____ State _____