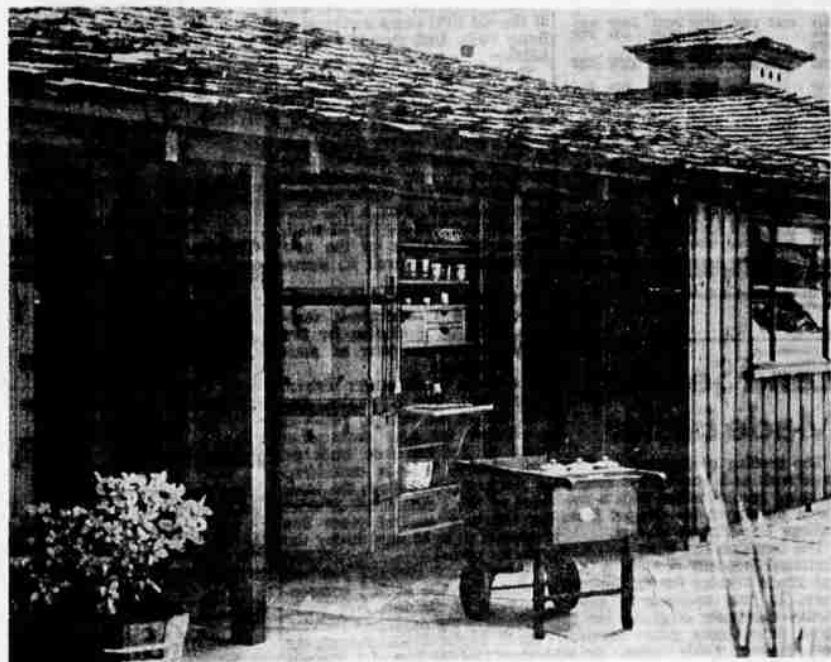




A BUILT-IN of western pine lumber may be designed to convert space that normally would be unused into storage where it is needed. This attractive unit built around a window is utilitarian and decorative in its living room setting. A unit may make use of ready-made cabinets, chests, and bookcases of ponderosa pine or any of the other western pine species and louvered doors, usually of sugar pine. Many lumber yards carry ready-made pieces.



BUILT-INS to store the equipment of outdoor living near where it is needed helps the family to get the maximum pleasure and relaxation outside the house in summer time. This cabinet of knotty western pine wood was built onto the patio side of the house for storing utensils handy for barbecues. The cabinet blends well with the house siding of knotty ponderosa pine, one of the popular species of wood from the western pine region. Only one foot deep, the cabinet has a pass-through from the breakfast room and an extended shelf that folds down.

Recommend Sprinklers For Strawberries

MADISON, Wis. (UPI) — Home gardeners might consider installing sprinkler systems next spring to prevent frost damage in strawberry beds.

Strawberry blossoms can be protected against late spring frosts with sprinkler irrigation according to University of Wisconsin horticulturist George Klingbeil. He said the temperature of strawberries will remain at a safe 32 degrees as long as water is freezing on them.

He said a perforated garden hose can be used in the strawberry patch and can save blossoms from damage even when temperatures reach the low 20's.

Some Tips On Using That Electric Mower

CHICAGO (UPI) — Safety specialist O. L. Hogsett of the University of Illinois college of agriculture says an electric mower will do the best job if you cut that grass in straight lines across your lawn.

He also suggested working away from the cut-over area to avoid risking electric shocks from any frayed wires.

If the grass is wet, it isn't a good idea to work with an electric mower, Hogsett warned. And to keep the cord from kinking or tangling, coil it loosely in a bucket or basket.

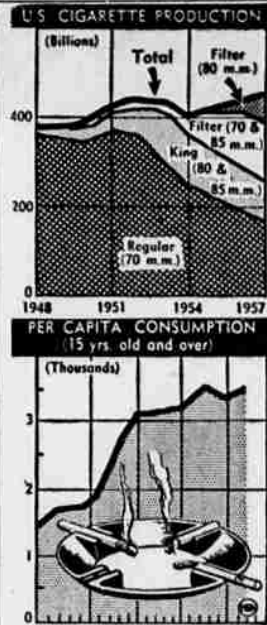
Ohio Turnpike Caters To Canine Travelers

CLEVELAND, Ohio (UPI) — A small section of the Ohio Turnpike has gone to the dogs.

The Ohio Turnpike Commission has set up dog exercise areas at each of the 16 plazas. The runs are about 150 feet long, 15 feet wide, covered with four inches of fine gravel and enclosed with four-foot-high snow fences. Assistant maintenance engineer Wesley Hottenstein said:

"Dogs sometimes get messy, and we thought that giving them an enclosure of their own would make things better for everyone, including the dogs."

OLD PLAY, NEW COSTUMES
FLAGSTAFF, Ariz. (AP)—The Arizona Playmakers of Arizona State College at Flagstaff couldn't forget their western background even for Shakespeare. The group presented "The Taming of the Shrew," with women in gay squaw dresses and men in levis, boots and 10-gallon hats.



UP IN SMOKE — Cigarette production in 1957 was 442 billions, a record high, reports the agricultural department. A 40 per cent increase in filter tips more than offset a 10 per cent decline in non filters, but also accounted for a drop in quantity of tobacco utilized — 100 million pounds less than in 1952. Per capita consumption (number of cigarettes made divided by total population 15 years old and older), was slightly below the 1952 high.

Farmers! Ranchers! Stockmen!
SEE JUCK
for
Your Truck!
Juckland Truck
Sales and Service
Your International Dealer
11th & Klamath Ph. 2-2581

BULLETIN NO. 11
DATE 6-27-58

FOOT COUNCIL, KAMATH FALLS, OREGON, DEPARTMENT REPORT, 1957 CROP YEARS WITH 1956 CROP YEARS COMPARISONS
COMPARATIVE FIGURES THROUGH 1957

Crop	1956		1957		1958		1959		1960		1961		1962		1963		1964		1965		1966		1967	
	Area	Yield	Area	Yield	Area	Yield	Area	Yield	Area	Yield	Area	Yield	Area	Yield	Area	Yield	Area	Yield	Area	Yield	Area	Yield	Area	Yield
Corn	1111	1222	1333	1444	1555	1666	1777	1888	1999	2000	2111	2222	2333	2444	2555	2666	2777	2888	2999	3000	3111	3222	3333	3444
Wheat	444	555	666	777	888	999	1000	1111	1222	1333	1444	1555	1666	1777	1888	1999	2000	2111	2222	2333	2444	2555	2666	2777
Barley	333	444	555	666	777	888	999	1000	1111	1222	1333	1444	1555	1666	1777	1888	1999	2000	2111	2222	2333	2444	2555	2666
Oats	222	333	444	555	666	777	888	999	1000	1111	1222	1333	1444	1555	1666	1777	1888	1999	2000	2111	2222	2333	2444	2555
Hay	111	222	333	444	555	666	777	888	999	1000	1111	1222	1333	1444	1555	1666	1777	1888	1999	2000	2111	2222	2333	2444
Alfalfa	555	666	777	888	999	1000	1111	1222	1333	1444	1555	1666	1777	1888	1999	2000	2111	2222	2333	2444	2555	2666	2777	2888
Beans	666	777	888	999	1000	1111	1222	1333	1444	1555	1666	1777	1888	1999	2000	2111	2222	2333	2444	2555	2666	2777	2888	2999
Peas	777	888	999	1000	1111	1222	1333	1444	1555	1666	1777	1888	1999	2000	2111	2222	2333	2444	2555	2666	2777	2888	2999	3000
Apples	888	999	1000	1111	1222	1333	1444	1555	1666	1777	1888	1999	2000	2111	2222	2333	2444	2555	2666	2777	2888	2999	3000	3111
Oranges	999	1000	1111	1222	1333	1444	1555	1666	1777	1888	1999	2000	2111	2222	2333	2444	2555	2666	2777	2888	2999	3000	3111	3222
Strawberries	1000	1111	1222	1333	1444	1555	1666	1777	1888	1999	2000	2111	2222	2333	2444	2555	2666	2777	2888	2999	3000	3111	3222	3333
Total	1234	1345	1456	1567	1678	1789	1890	1901	2012	2123	2234	2345	2456	2567	2678	2789	2890	2901	3012	3123	3234	3345	3456	3567

NOTES:
1. Certified seed shipments only not reported from some areas throughout.
2. Some lots contain high percentages of U.S. 1 and U.S. 2 grades. Excludes other varieties, including flour and all types of sprouted products.
3. Lots contain lower percentages of U.S. 1 and U.S. 2 grades or fall to meet U.S. 1 and U.S. 2 grades from market requirements.
4. Excludes shipments to livestock feed, farm use, and use for planting whole area, etc.

1000 ROLLS BARBED WIRE

4 point 12½ gauge \$9.40 roll
2 point 12½ gauge \$8.50 roll

IMMEDIATE FREE DELIVERY

NEATON Steel & Supply INC

428 SPRING STREET TELEPHONE 2-3427
KLAMATH FALLS, OREGON