

# THE HOUSE OF THE WEEK

## Architect Conquers the Problem of Space

# Inexpensive Split Has Eight Rooms, Two Baths

By JOHN O. B. WALLACE

If you have a big family, you'll appreciate a house like this — and the price, too.

"It has the potential," says the architect, "of being the most inexpensive house for its size in the standard construction class."

A surprising eight rooms and two baths are shoehorned into its three levels. And yet the basic area is less than 1,000 square feet.

Designed by Rudolph A. Matern and numbered X-10 in The House of The Week series, the plan offers these features, level by level:

On the entrance level — foyer, living room, dining room and kitchen with space for breakfast area.

On the upper level—three bedrooms and an oversized bath plus nine closets. The bath has two vanities and two lavatories plus a planter area at the head of the tub.

On the lower level — a recreation room, mud room, laundry room, garage, and bath with shower.

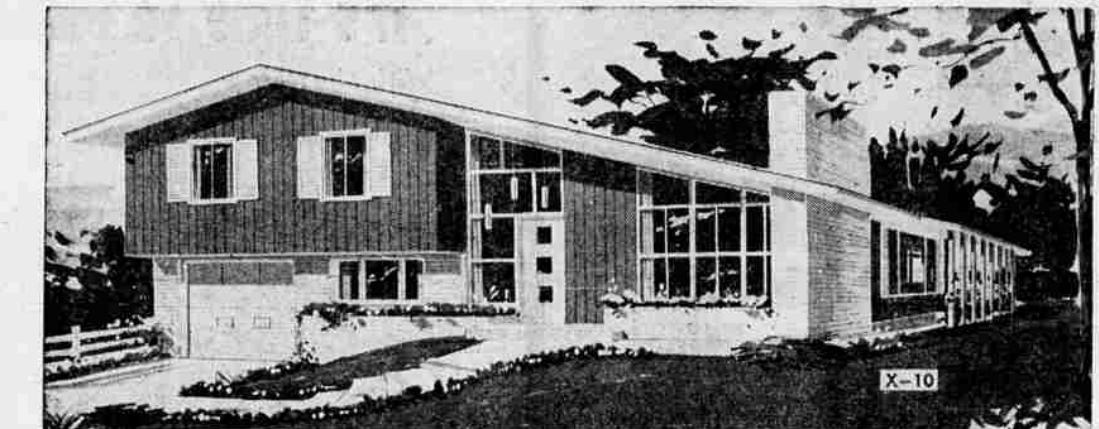
There is a full basement under the living level.

### Other Features, Too

Additionally, it has five exterior entrances, a dramatic foyer balcony, a log-burning fireplace, abundant storage space, and a rear terrace.

Architect Matern says he chose a split level type because it offers more livable space within the same area. On cost, it's best to figure with a specific contractor.

"The lower or recreation level,



**THIS MINIMUM-SIZED HOUSE** has a big house look. Large, four-foot composition panels with square, vertical grooves are used for siding. They go up fast, cutting construction time. Brick is used on the garage face, for the entrance-flanking planters and for the chimney. There are large glass areas. The roof is of white asphalt shingles, which reflect the summer heat.

excluding the garage, adds 213 square feet to the house, but because it is below the bedroom level its construction cost is at least cut in half," Matern says.

"Every square inch of space is used for living. Here is a home for all those people who need three bedrooms who could never afford to build before."

The entrance has been given an importance often lacking in small homes: offset glass and vertical panels surround the door; delicate drop-lights hang from the ceiling just inside the foyer, and brick planters flank the porch.

The vertical paneling at one side of the door has been used

**Statistics**  
House of The Week design X-10 has overall dimensions of 43 feet 2 inches by 23 feet 8 inches and will fit a 60 by 100 foot lot. The main area of the house, the living and bedroom levels, has a total of 985 square feet. There are 213 square feet in the recreation room, mud room and bath — and 245 square feet in the garage. A full basement lies under the living level.

inside, too. The living room wall near the door has been covered with the same, grooved paneling.

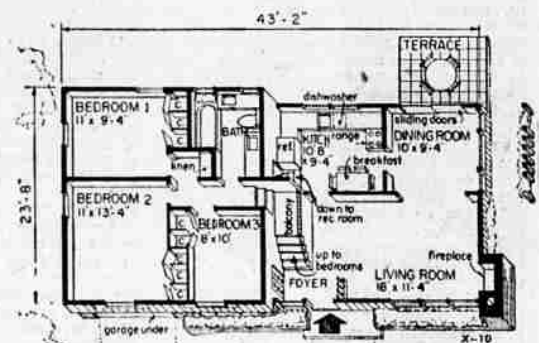
At the point where the foyer flows into the living room, the stairs to the bedrooms form a five-foot-long balcony overlooking the living room.

### Plenty Of Natural Light

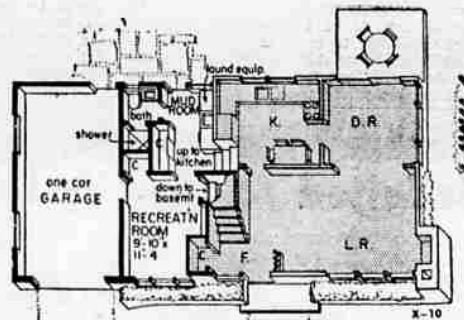
The large glass areas in the entrance foyer and living room extend along the angle of the sloped ceiling and permit a flood of natural light.

In the evening, with the interior lights on, this glass area adds drama to the view as guests approach the house. The living room has a log-burning fireplace and the space under the stair-balcony is used for book shelves.

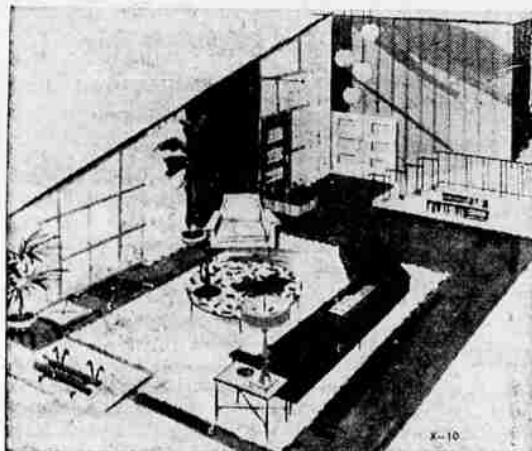
The high sloping ceiling gives the appearance of extra space in the living room, dining room and kitchen. Large glass windows are used on one side of the dining room and sliding glass doors open from the dining room onto a rear terrace.



**THE FLOOR PLAN ABOVE** shows the living and bedroom levels with a total of only 985 square feet. The plan below shows the recreation room level.



The kitchen, a joy to any housewife, has a U-shaped service area and space for a breakfast nook. The service door is four steps down from the kitchen and off the lower level mud room. Louvered, accordion-type doors are specified for all bedroom closets. These doors open to make the entire floor of the recreation room level is of labor-free, resilient age into a small space to save tile. A bath with shower, closets, room.



**THIS OVERHEAD VIEW** looks across the living room toward the entrance foyer. Drop lights hang from the sloped ceiling. Stairs to the bedrooms form a five-foot-long balcony overlooking the living room. Large glass areas permit abundant natural light.

### Send this coupon for your STUDY PLAN



YOU CAN GET a study plan for The House of The Week by filling in your name and address on the coupon on this page and sending it with 35 cents to this newspaper.

This study plan shows each floor of the house together with each of the four elevations, front, rear and sides of the house. It is scaled at 1/8-inch per foot. It includes a guide on "How to Get Your House Built."

You can take this study plan to your bank or other mortgage lender and to your builder and get rough estimates on the cost of construction in this area, as well as an idea of the cost in relation to your budget.

With this information you will know whether you will want to proceed with construction by ordering working blueprints direct from the architect and asking for bids for the work.

### STUDY PLAN ORDER COUPON

Building Editor:

Enclosed is 35 cents. Please send me a copy of the study plan of **The House of The Week, Design X-10.**

Name \_\_\_\_\_ (please print)

Street \_\_\_\_\_

City \_\_\_\_\_ State \_\_\_\_\_