

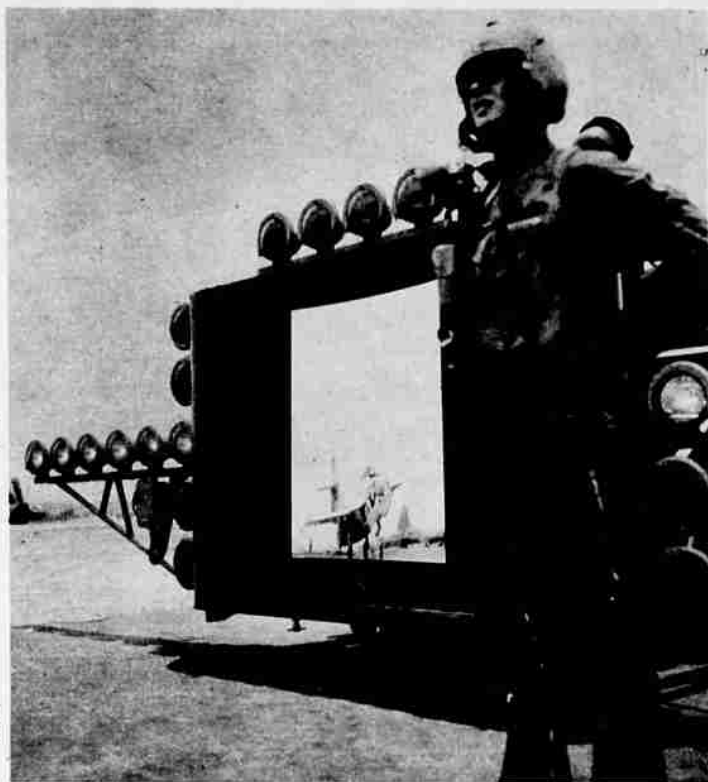
"Meatball" Shows the Way



Navy jets use mirrors now to set down on home deck.

MODERN AIRCRAFT CARRIERS are immense only to the landlubber. To jet pilots who must approach them at well over a hundred miles an hour, they sometimes appear little bigger than a raft in a pitching sea. The U. S. Navy, however, has come up with a device to make pinpoint landings almost a sure thing. Technicians have set up a battery of amber lamps behind a specially designed concave mirror which reflects the light upward in a perfect approach pattern. As long as the flyer can see the reflection, he knows he's "on the beam."

The idea, called "Operation Meatball" because the rosy reflection looks like uncooked hamburger, already has cut salt-water dunkings and deck mishaps by one-third and reduced crash costs by \$50 million a year.



Modern warrior and his modern guidon—it reflects perfect approach beam.

BIG CANNON Bath Towel

no extra cost—in every King Size

*It's full-sized, fluffy,
pastel-colored... and it's
packed right in the box!*



And remember—Breeze is tops for everything you wash—from dungarees to nylon. You can't buy a better all-purpose detergent!

Satisfaction guaranteed by Lever Brothers or your money refunded.

**WHITER,
BRIGHTER,
WASHES, TOO!**



CANNON FACE CLOTH IN REGULAR SIZE . . . CANNON KITCHEN TOWEL IN GIANT SIZE