

By FRANK JENKINS

President Eisenhower (who is the Republican party's leader) is predicting a quick upturn in the national economy. He says the change for the better should be noticeable as early as next month and should be clearly apparent to EVERYBODY by mid-summer.

He says he bases his opinion on the best advice he has been able to get as well as on his own personal opinion.

The Democrats, almost without exception, are predicting worse to come. Commenting on Ike's prediction, Senator Paul Douglas of Illinois says: "I remember how a former Republican President made similar remarks back in 1930 and 1931."

Senator Hubert Humphrey of Minnesota urges tax cuts, "massive" school construction, \$10 million clearance and other public works. In general, his idea seems to be that the doors of the treasury should be pried open and the money permitted to spill out in a golden stream which everybody can dip into more or less at will.

In both cases, the political reasoning is clear.

If an upturn doesn't come, the GOP is a dead duck. If it does come, the Democrats must be able to make out a case that it came BECAUSE OF WHAT THEY DID, AND IN SPITE OF WHAT THE REPUBLICANS DID.

So much for the politics of the situation. Let's take a look now at some purely business statements, which represent the thinking of free enterprisers who are looking forward to the future and making plans for it.

Pan American World Airways announces it will build a 15 to 20 million dollar jet overhaul base at Miami. Construction is scheduled to start about July 1.

American Can Company's Dixie division will open a three million dollar plant at Lexington Kentucky this year. A Canco official says the firm also will expand its paper facilities in Darling South Carolina, Fort Smith Arkansas and Anaheim California.

Ralston Purina Company says it plans to build a major cereal plant on a 20-acre site in the Cincinnati area. The expected cost isn't announced. Construction will begin immediately.

The Bank of America will double the size of its proposed new San Francisco office building on Market street near Van Ness. The building will be eight stories high, and bank officials say it will be designed so that additional stories can be added as needed. More than 1,000 employees will work in the building, which will supplant the Russ building as the city's biggest office structure.

These new plans represent CONFIDENCE, backed by MONEY.

If confidence in the future continues, there will be NO depression.

If confidence is lost, there will be a depression and no possible shots in the arm can prevent it. What the future holds for all of us will be determined far more by the business people of our country who are trying to make a living for themselves and their employees than by the politicians who are reaching for political power.

That's about the long and the short of it.

WASHINGTON (AP) — House Speaker Rayburn said Thursday Democratic leaders are going to start a review "pretty soon" to see where a tax cut might do the most good — if there is a tax cut.

Rayburn was asked at a news conference about possible congressional steps in view of the economic downswing and mounting unemployment.

Senate Democratic leader Johnson (D-Tex.) is helping shape up a multi-point anti-recession program.

# The Herald and News

Price Five Cents—24 Pages KLAMATH FALLS, OREGON, THURSDAY, FEBRUARY 13, 1958 Telephone TU 4-8111 No. 4021

## War Threat Issued By Tunisian Leader

TUNIS (AP) — President Habib Bourguiba said Thursday that he would personally lead the Tunisian people in a guerrilla war if necessary to get French troops off Tunisian soil.

## Iraq-Jordan Merger Nears

AMMAN, Jordan (AP) — Preparations continued Thursday for signing the proclamation federating the kingdoms of Iraq and Jordan.

## Copco Opens Power Plant

A new substation built by the California Oregon Power Company at Chilquin for servicing the new Johns-Manville plant was activated Wednesday, February 12.

## Crews Rush To Aid Youth

SAN BERNARDINO, Calif. (AP) — A weak handwave from a boy lying helpless on a ledge in a snowy canyon spurred efforts Thursday to reach him while he still is alive.

## Heart Fund Events Slated

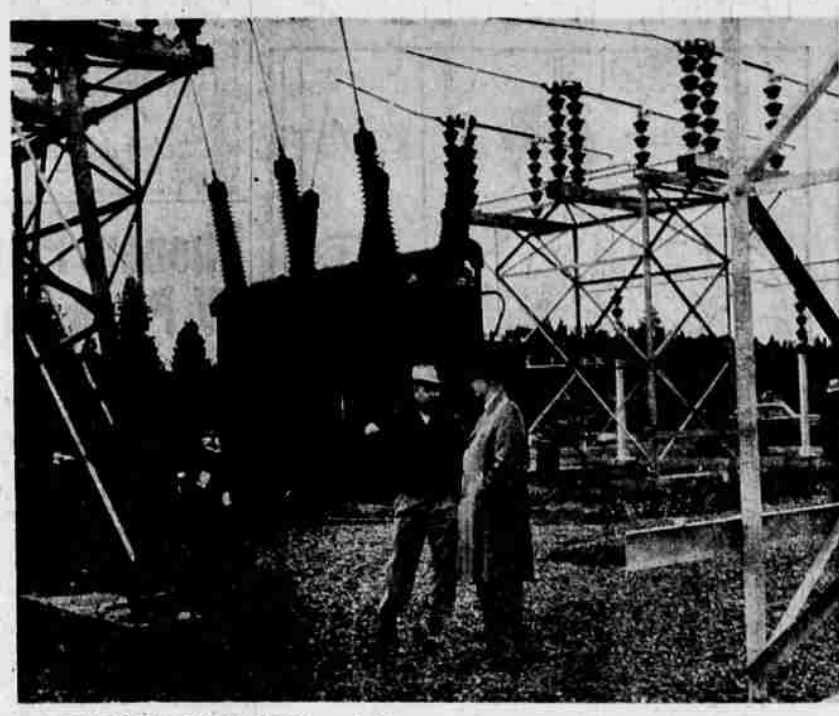
The annual nationwide Heart Fund campaign, moving into high gear to be climaxed by Heart Fund Sunday on February 23, is being assisted locally by various activities, according to Robert L. Mason, Klamath County chairman.

## 'Spaceman' Going Strong

SAN ANTONIO, Tex. (AP) — Airman Donald Farrell was doing "just fine" on his fifth day on his simulated moon flight. Air Force scientists said Thursday.

## Tax Reduction Study Planned

WASHINGTON (AP) — House Speaker Rayburn said Thursday Democratic leaders are going to start a review "pretty soon" to see where a tax cut might do the most good — if there is a tax cut.



COPCO'S NEW SUBSTATION at Chilquin was activated Wednesday, February 12. Shown here examining the new \$850,000 facility are, left, Hank Fisher, Medford, chief electrical engineer for California Oregon Power Company, and Sam Ritchey, manager of the Klamath Falls branch of the company. —Photo by Kettler

## Copco Opens Power Plant

A new substation built by the California Oregon Power Company at Chilquin for servicing the new Johns-Manville plant was activated Wednesday, February 12.

## Southland Residents Shiver As Unusual Cold Hits Area

By THE ASSOCIATED PRESS Nature spread a blanket of snow in the Deep South Thursday and the Weather Bureau issued freeze warnings for Florida.

## Weather

FORECAST—Klamath Falls and vicinity: Clearing a d and colder Thursday night with low 22-28, increasing cloudiness Friday with a little light rain late in day, High Friday 45-50.

## Senate Democrats Drafting Plan To Combat Recession

WASHINGTON (AP) — Senate Democrats are drafting a 10-point anti-recession program which party leaders plan to give a speedy start through Congress.

## French Warn Against Action

TUNIS (AP) — The French government today warned Tunisia that further grave incidents might result from Tunisian efforts to cut off supplies to the 15,000 French troops still in the North African country.

## Candidate Airs Labor Issue

LOS ANGELES — Sen. William Knowland says he is willing to campaign for governor on the "right-to-work" issue. He said "I do not intend to complacently allow California to become a satellite of Walter Reuther's labor-political empire."

## Senate Democrats Drafting Plan To Combat Recession

WASHINGTON (AP) — Senate Democrats are drafting a 10-point anti-recession program which party leaders plan to give a speedy start through Congress.

## Leases Necessary For Housing

LEASES NECESSARY for going ahead with 220 units of Air Force housing near Kingsley Field were recorded Thursday morning at the Klamath County Courthouse.

## Schwartz Accuses FCC Commissioner

WASHINGTON (AP) — Bernard Schwartz testified Thursday that Federal Communications Commissioner Richard A. Mack has acknowledged receiving "several thousand dollars" from an attorney for a Miami television station.

Schwartz, fired counsel for a special House subcommittee, told the subcommittee under oath the money was paid to Mack after he became a member of the FCC in the summer of 1955.

Mack was one of four commissioners who voted to grant the hotly contested Channel 10 in Miami to Public Service Television Inc., a wholly owned subsidiary of National Airlines.

Schwartz said the money was paid to Mack in several checks by Thurman A. Whiteside, a Florida attorney who had been retained by Public Service for work in connection with its television application.

Schwartz described Whiteside as an attorney who has a reputation in Florida as "a fixer."

Efforts by reporters to reach Mack and ask comment on the testimony were unsuccessful. Aides reported the commissioner was out of his office and unavailable.

In developments, meantime, outside the subcommittee hearing but related to it: House Speaker Rayburn (D-Tex.) told a news conference the subcommittee is determined to make a real inquiry and that he has confidence in the leadership of Harris.

"I think Oren Harris is one of the ablest men we have around here and one of the finest (in) honesty and integrity," Rayburn said.

Rayburn specifically denied a report published by the Washington Post that the inquiry originally headed by Rep. Moulder (D-Mo) had been granted House funds only after assurance from the leadership that Harris would not be chairman.

Sen. Morse (D-Ore) introduced in the Senate a resolution for creation of a special Senate committee to investigate the FCC and other federal regulatory agencies.

Morse told his colleagues he feels the Senate has "an independent obligation" to make such an investigation regardless of the House subcommittee's inquiry.

Schwartz read into the record information he said was from canceled checks in the subcommittee files.

## Potato Survey Results Talled

Walt Jendrzewski, of the Klamath County Agent's Office, reports that a survey of grade and size averages made by the inspection service in January shows the Klamath Basin potato crop to average 57 per cent No. 1's potatoes above two inches in diameter.

The survey covered 141 samples from 45 growers in the Basin and 78 samples taken from 28 growers in Central Oregon, the agent said.

No. 2's over five ounces in weight made up 16 per cent of the Basin crop and 19 per cent in Central Oregon, while tubers being culled for livestock feed averaged 27 per cent here and 30 per cent in the other area.

The French warning was contained in a note delivered to Bourguiba's chief minister, Bahi Ladgham, as the president was recording his weekly radio address to the nation for broadcast later today.

In Paris, Foreign Minister Christian Pineau scheduled a speech on the Tunisian crisis in the National Assembly this afternoon. Earlier, the Assembly voted 339-179 to accept Premier Felix Gaillard's explanation that the bombing was in "legitimate defense" against Algerian rebels headquartered in the village.

Foreign ambassadors in Tunisia who visited the village, however, reported to their governments that most of the casualties appeared to be civilians, as the Tunisian government claimed. The Tunisians said 68 men, women and children were killed, 84 were wounded and 10 were missing.

WHO'S HEN-PECKED? SHIMODA, Japan (UP)—Twenty men who married heiresses and adopted their wives' names gathered here to protest against society gossip that they were henpecked fortune hunters. The meeting was broken up by a flood of telephone calls from angry wives demanding that their husbands return home.



COLORFUL RED AND WHITE envelopes, that explain the distribution of funds gathered during the annual Heart Fund campaign, have been mailed out to Klamath Basin residents for the return of contributions to the campaign which centers around Heart Fund Sunday, February 23. Robert L. Mason, right, county drive chairman, shows the envelopes to Richard P. Laudenschlager, treasurer.



LEASES NECESSARY for going ahead with 220 units of Air Force housing near Kingsley Field were recorded Thursday morning at the Klamath County Courthouse. From left to right are John Quinn, representative of the Wilson Title and Abstract Company; Capt. William Hicks, installation officer at the Kingsley base; and Charley DeLap, county clerk. The necessary Federal Housing Authority papers were signed Wednesday in Portland, and were flown here that evening. The estimated cost of the air base housing project is \$3,564,800, and the project has been underwritten by Commonwealth, Inc. —Photo by Kettler