

Smaller Accessories Popular Planning Saves Kitchen Steps

We are coming into a new decorative era in the home. Everywhere there is evidence that small accessories are important to the 1958 decor. These are no longer classified a clutter, because they add important highlights wherever used. The popularity of small decor attractions has made bookcase units more important in home decoration. Shelves are used not only for books, but for decorative accessories as well.

The current home furnishings show at Chicago exhibits one bookcase unit with slotted adjustable shelves which may be rearranged to suit the needs of displayed articles. If a candlestick is too tall, or a book too large, just remove the shelf and give it more room.

Handcrafted glassware offer new shapes in vases, decanters and figurines. Glassware may be used all year round and now are designed to do double duty. Many newer pieces are in a free-form design to harmonize with a casual look in modern home furnishings. They provide a pleasant contrast to traditional furnishings. Most standard glass designs use geometric forms.

Free form glass accessories capture the liquid movement of molten glass in some instances, vary-

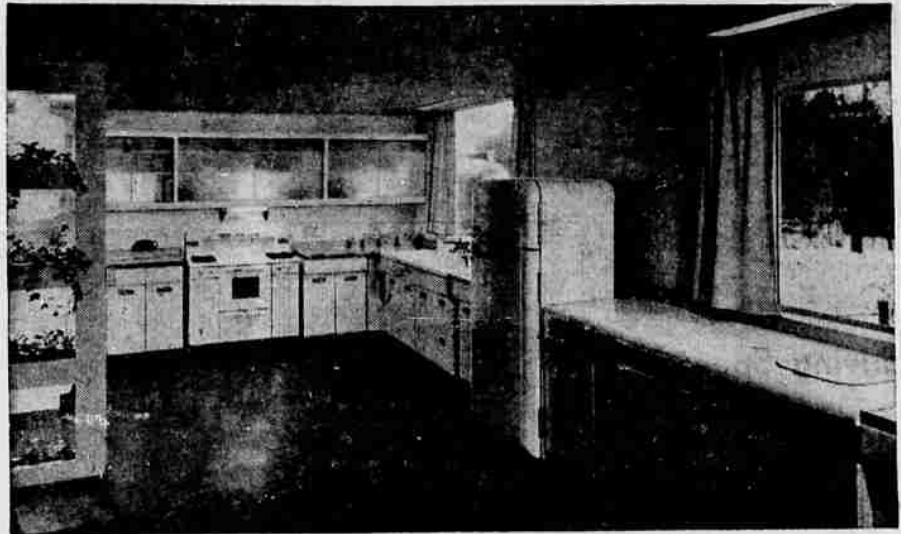
ing from basic geometric forms, yet they add new interest to a design. Designers of handcrafted glass are seeking to win lovers of old glass over to contemporary glassware, as illustrated at the current Pittsburgh glass market.

Walls are going gala, also. Wall ornaments of ceramic and paste and other materials are chic. One with a background of granite in which ceramic tile pieces are imbedded is durable. It is a rough textured material, making a perfect background for the smooth tiles.

Another popular wall decoration looks like real mosaic, but instead of tiny ceramic tiles, it is a silk screen pigment job on wood pulp in vivid or muted colors, depending on the design.

There is more imagination, too, in that simple accessory, the ashtray. New ones are of glass, ceramic design or handsome metal, big enough for cigarettes, cigars or pipes.

Those using new wall decorations or table or shelf accessories should be aware that they can be over emphasized. A seasoned decorator may use a great variety of small pieces with handsome effects, but an amateur must steer clear of a hodge-podge that can result from inexperience in assembling small articles.



EFFICIENCY KITCHENS with appliances and storage cupboards arranged in convenient units lessen steps harried housewives must take in the course of their daily work. The large windows complete the pattern of "open living" which is so sought after in modern homes. Ample daylight floods the work area, creating a bright, cheery atmosphere.

Just as electric stoves and refrigerators are taking a great deal of the drudgery out of everyday meal preparation, so can the effective placement of these and other labor-saving appliances in the kitchen help to reduce the number of tiring steps in a housewife's average day.

It is not too surprising to learn that foremost among those who recognize this fact are the housewives themselves. This was revealed in a recent nationwide poll when 98.3 per cent of the homemakers interviewed answered "yes" to the question, "Do you believe that the relative location of kitchen appliances, such as refrigerator, range, and other mechanical helps, is vital to making your kitchen work easier?"

Confirming the housewives' opinion, Otto F. Wenzler, architectural consultant, pointed out that grouping of appliances used in meal preparation into a closely integrated unit, cuts out a lot of walking from one end of the kitchen to the other as is the case many times in poorly planned kitchens.

"By placing the stove, refrigerator, storage cupboards and principal work area in close proximity to the sink, it is possible for the housewife to prepare a meal with minimum of movement," Wenzler said.

Further revealed by this survey is the housewife's desire for abundant daylight in the kitchen. Voting was almost unanimous, with strong favoritism being shown for large picture windows which are finding increased use in today's efficient kitchens.

"A bright, cheery atmosphere afforded by picture windows just seems to go with the 'open planning' of modern kitchens," Wenzler commented.

Washing Of Walls A Regular Chore

Fireplaces and central heating systems have a way of coating the walls with an accumulation of dirt over the course of winter. Often, these dirt deposits aren't noticed immediately because they are spread so evenly over the entire wall surface. When they are discovered, or when regular cleaning time arrives, these soot and grime deposits may be easily removed by following the right technique.

Equipment for the job includes two pails, one filled with soapy water, the other with rinse water, and a long-handled sponge mop. Apply soapsuds liberally with the sponge mop, starting at the bottom, then rinse with clear water. The bottom-to-top technique prevents hard-to-remove streaks from dirty wash water.

Wenzler said the emphasis on indoor-unity with patios and play areas often opening off the kitchen, mothers want the large windows to keep an eye on children at play, and they like the feeling of spaciousness which larger kitchen windows provide.

YOUR NEW Westinghouse Dealer
Bob TV Ross
210 No. 11th Ph. TU 2-3479

Exclusively -

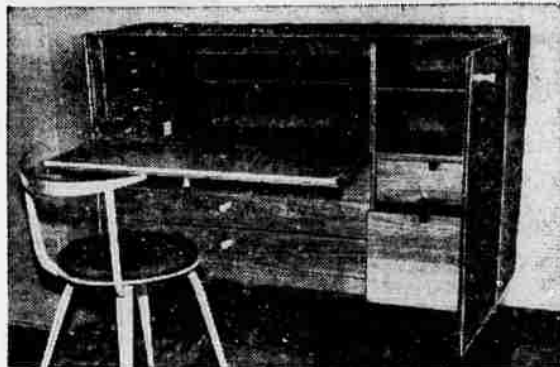
Real Estate FINANCING

homes - commercial - business - farms

Tower Theater Bldg.
P.O. Box 596 Ph. TU 4-4028



GAME TABLE. When covered with cushions this piece serves as an oversize ottoman. The games are stored underneath.



CHEST DESK. This dual purpose item, designed by a modern American decorator, has compartments for papers or wardrobe.



FOCAL POINT. This modern chest and bookcase, shown at the current Chicago home furnishings show is highlighted by American blown glass in a variety of shapes.

THERE'S NOTHING NEW ABOUT RADIANT HEAT

Whether it's the old pot-bellied stove or a "modern" heating system, radiant heat is still radiant heat . . . and just like when Grandma was a girl, warm air still rises . . . and just like Grandpa, your feet will be cold, too, if your heating system lets the heat pile up on the ceiling.

It's easy to see why the silent, turbo-circulated heat of THERMADOR has proved to be the most efficient method of producing comfortable, economical electric heat. THERMADOR gently moves the heated air across the room at floor level—prevents heat from piling up on the ceiling, where it's wasted.

DESIGNED SPECIFICALLY FOR THE NORTHWEST

Called the THERMADOR NW — this ALL-NEW model is the result of research geared to producing an electric heater that will operate indefinitely, with no maintenance problems. Before you buy, get the facts you should know.

LEACH Service Co.
123 So. 6th
Phone TU 2-2528

THERMADOR
MULTI-ON ELECTRIC ROOM HEATER

2, 3, 4, 4 1/2 KW Models. Also in 220-V. Portable Model UL Approved, Manual or Thermostat Controlled, from \$64.79