

# Business News

By FLORENCE JENKINS

**Correction.** . . . The Blue Ox observed its second birthday anniversary on October 19, not October 12, as reported last week in these columns. . . . The mayor and other city dignitaries were invited to the birthday anniversary dinner on Saturday night by Bob Wilson, who has operated the business for two years, and George Paris, chief, who joined the staff earlier this year from Portland.

**Reliable Cleaners.** 1116 Main, operated by Bob and Mickey Henry, has a Saturday special which is causing a lot of fun and comment, not to mention profit to a number of customers.

Mrs. Henry dreamed up the idea as she was driving back to Klamath Falls the other day and, with the cooperation of Rickys, has set nine alarm clocks, with faces covered, in the window of the store (the dry cleaning establishment is open nine hours each day). At pre-arranged intervals, the alarms ring and the customer being waited on when the alarm clock rings, gets his cleaning free. . . . it's a good Saturday business-builder.

**Merger.** . . . Matson Assurance Company and Pacific National Life Assurance Co. merger was approved recently by directors of both companies. . . . stockholders will be asked to approve the boards' action in meetings on Nov. 4 in San Francisco and Salt Lake City. . . . Name of the new company will be Pacific National Life Assurance Co. . . . Matson Navigation Co. in January 1953, sells group life insurance in seven West states, Alaska and Hawaii. . . . home and executive offices of the new company will be located in San Francisco, the operations office in Salt Lake City.

**New School Addition Eyed**  
MONTAGUE (Special) — With an enrollment of 239 students this year at the Montague Elementary School, as compared to 176 in November 1955, the school board has decided that it will be necessary to hold a bond election in order to borrow \$150,000 of state money to build three additional rooms onto the present new school building.

When plans for the new school were considered it was estimated that it would house about 185 pupils. With the influx of new families into the area, the enrollment has gone much higher than previously anticipated. According to the report released by the principal, Harold Hooten, the kindergarten and first grade classes are required to attend school in the old school building, now owned by the city of Montague.

This creates an additional expense for the Montague school district, as it must pay rent and maintenance for the building to the city for the use of the building. The Montague school now has 10 teachers, including two first grade teachers to handle the kindergarten and first grade classes. The bond of \$150,000 will extend the present loan four years, and it will in no way increase the present taxes. It will provide funds for the purchase of additional land, to construct the necessary three rooms, and purchase desks and other equipment needed for all classrooms. It is felt by the school board that the three new rooms should take care of any future population increase for the next three years.

**Expanding cement industry** is said to be vital to Oregon economy. . . . near \$4 million was paid last year to Oregonians employed by cement companies in Oregon. . . . Cement industry of Oregon recently organized, made up of cement companies with plant and distribution facilities in the state, has embarked on a long-range educational program to acquaint Oregonians with cement industry and need for building Oregon's federal-state highways "to last with concrete." . . . During the last two years cement plants in Oregon have increased production from 2,300,000 to 3,700,000 barrels annually. . . . so far, no plants in Southern Oregon.

**Ralph Wiese, district ranger** on the Mt. Hood National Forest, has been promoted and transferred to the Butte Falls district, Rogue River National Forest, effective Oct. 20, according to Carroll E. Brown, supervisor of the Rogue forest. . . . Wiese replaces Britt Ash on the Butte Falls district, who left on Aug. 26 for Ketchikan, Alaska. . . . Wiese is an active radio ham and a member of the Society of American Foresters.

**New manager at Rogers Jewelry Co.**, 837 Main, is Stanley A. Ford, who has been transferred from the assistant management of Rogers at Modesto, Cal. . . . he is married and has a two-year-old daughter, Karan (they wanted to spell it differently, he says) and they are looking for a 2- or 3-bedroom house, furnished.

**Ford replaces John O'Brien,** manager here for about four years, who has been transferred and promoted to Rogers' Sacramento headquarters, effective immediately. . . . Klamath Falls is the farthest north outlet of the California operation.

People are taking more pictures these days, according to Leo's Camera Shop, 836 Main St. . . . The biggest jump is in color film, with approximately 50 per cent more color film sold here this year than last. . . . Formerly, big peaks in home picture-taking were summer vacation periods and Christmas. . . . peaks are still noticed, but are bigger and last longer, and the between-season business has doubled. . . . "People used to board color film for special occasions," the store said, "but with improved film that can be used even with inexpensive box cameras, more people are shooting color."

Advertising by Eastman and Ansco and local advertising helps

a lot, the camera shop reported. "More people are having color prints made, too, than ever before," according to the report. . . . trade magazines report an increase in color business from 25-30 per cent in some areas to 75-80 per cent in others, so trend in general all over the country.

**Violet Mesner** has joined the office staff of Norm Wilson Insurance Agency, 724 Pine St.

**Billy Everett** has returned to California after serving as manager of the Winema Hotel for a short period. . . . the hotel is undergoing extensive renovation.

**Bids will be opened at 2 p.m.** on Nov. 5 by the contracting and purchasing officer at Kingsley Field for preparation of a storage area, adjacent to Bldg. 229, for heavy equipment and pipe installation. Work will include installation of two reinforced concrete catch basins and 280 feet of 18-inch reinforced concrete pipe; importation and compaction of 750 cubic yards fill material; construction of one plank railroad crossing; construction of covered storm drain with installation of 350 feet of 24-inch corrugated metal pipe with catch basins, frames and gratings. Construction area is to be seeded.

**Merger.** . . . Matson Assurance Company and Pacific National Life Assurance Co. merger was approved recently by directors of both companies. . . . stockholders will be asked to approve the boards' action in meetings on Nov. 4 in San Francisco and Salt Lake City. . . . Name of the new company will be Pacific National Life Assurance Co. . . . Matson Navigation Co. in January 1953, sells group life insurance in seven West states, Alaska and Hawaii. . . . home and executive offices of the new company will be located in San Francisco, the operations office in Salt Lake City.

**New School Addition Eyed**  
MONTAGUE (Special) — With an enrollment of 239 students this year at the Montague Elementary School, as compared to 176 in November 1955, the school board has decided that it will be necessary to hold a bond election in order to borrow \$150,000 of state money to build three additional rooms onto the present new school building.

When plans for the new school were considered it was estimated that it would house about 185 pupils. With the influx of new families into the area, the enrollment has gone much higher than previously anticipated. According to the report released by the principal, Harold Hooten, the kindergarten and first grade classes are required to attend school in the old school building, now owned by the city of Montague.

This creates an additional expense for the Montague school district, as it must pay rent and maintenance for the building to the city for the use of the building. The Montague school now has 10 teachers, including two first grade teachers to handle the kindergarten and first grade classes. The bond of \$150,000 will extend the present loan four years, and it will in no way increase the present taxes. It will provide funds for the purchase of additional land, to construct the necessary three rooms, and purchase desks and other equipment needed for all classrooms. It is felt by the school board that the three new rooms should take care of any future population increase for the next three years.

**Expanding cement industry** is said to be vital to Oregon economy. . . . near \$4 million was paid last year to Oregonians employed by cement companies in Oregon. . . . Cement industry of Oregon recently organized, made up of cement companies with plant and distribution facilities in the state, has embarked on a long-range educational program to acquaint Oregonians with cement industry and need for building Oregon's federal-state highways "to last with concrete." . . . During the last two years cement plants in Oregon have increased production from 2,300,000 to 3,700,000 barrels annually. . . . so far, no plants in Southern Oregon.

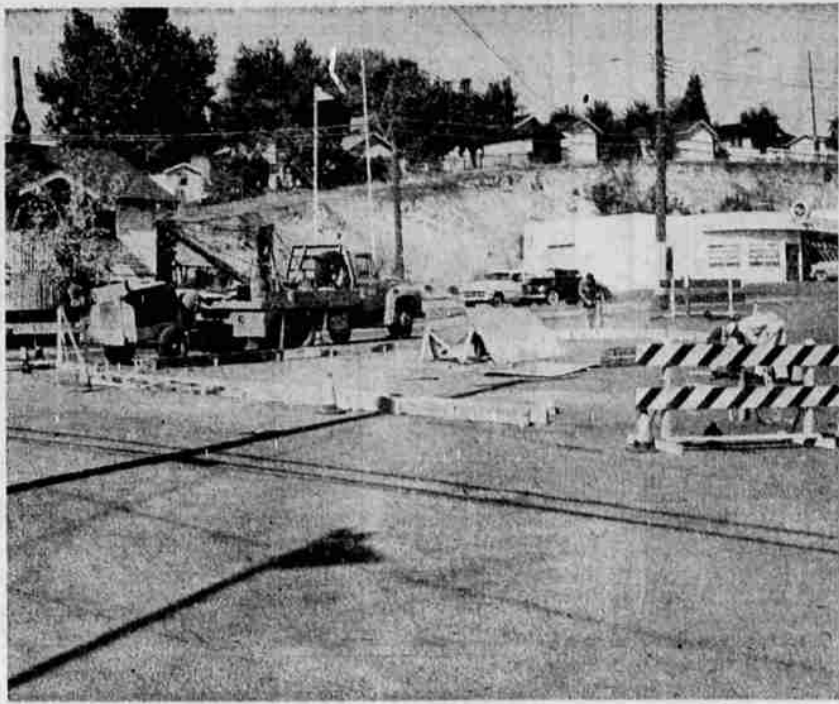
**Ralph Wiese, district ranger** on the Mt. Hood National Forest, has been promoted and transferred to the Butte Falls district, Rogue River National Forest, effective Oct. 20, according to Carroll E. Brown, supervisor of the Rogue forest. . . . Wiese replaces Britt Ash on the Butte Falls district, who left on Aug. 26 for Ketchikan, Alaska. . . . Wiese is an active radio ham and a member of the Society of American Foresters.

**New manager at Rogers Jewelry Co.**, 837 Main, is Stanley A. Ford, who has been transferred from the assistant management of Rogers at Modesto, Cal. . . . he is married and has a two-year-old daughter, Karan (they wanted to spell it differently, he says) and they are looking for a 2- or 3-bedroom house, furnished.

**Ford replaces John O'Brien,** manager here for about four years, who has been transferred and promoted to Rogers' Sacramento headquarters, effective immediately. . . . Klamath Falls is the farthest north outlet of the California operation.

People are taking more pictures these days, according to Leo's Camera Shop, 836 Main St. . . . The biggest jump is in color film, with approximately 50 per cent more color film sold here this year than last. . . . Formerly, big peaks in home picture-taking were summer vacation periods and Christmas. . . . peaks are still noticed, but are bigger and last longer, and the between-season business has doubled. . . . "People used to board color film for special occasions," the store said, "but with improved film that can be used even with inexpensive box cameras, more people are shooting color."

Advertising by Eastman and Ansco and local advertising helps



CONSTRUCTION WAS ABANDONED on this island at the intersection of Oregon Avenue and Upham after a protest petition was filed with Mayor Lawrence Slater from residents in the area. The portion of the island already constructed will be torn out, the mayor explained.

## Hunters Report Good Duck Kills

Reports from the Tule Lake and Lower Klamath National Wildlife Refuge indicated that there were more duck hunters out on the opening weekend, that they killed more ducks, but that the goose kill was considerably less than during 1956.

Refuge Manager Tom Horn advises that the opening weekend saw 6,832 hunters at the refuge compared with 5,571 during the same weekend of 1956. The preliminary counts indicate that there were 14,000 ducks taken this year, compared with 13,300 last year. However, there were 6,565 geese taken on the opening weekend last year and only 1,359 this year.

## Arts, Crafts Class Opens

Robert E. Bonney, city park and recreation director, said registrations are still open to people interested in teaching youth groups arts and crafts or who wish to further their own knowledge of art work.

Bonney was referring to the classes that begin Monday in the old armory from 9:15 a.m. to 11:45 a.m. and from 7:30 p.m. to 10 p.m.

These classes will last for two weeks, and will run from Monday through Thursday, October 21 to 24 and 28 through 31, all dates inclusive.

Frank A. Staples, arts and crafts specialist of the National Recreation Association will teach complete methods and techniques for many forms of handicraft.

The evening session will instruct in three crafts. They are wire jewelry, plastics and enameling on copper. This course is for leaders in adult groups or hobbiests, Bonney said.

Applicants may call the recreation office, TU 2-3863 or may come to the recreation office, second floor, city hall and register. The third alternative is come to the Klamath Falls Armory for the first session, and sign up at that time. Bonney said the entrance is on the Spring Street side.

Staples has arranged continuity for the course so that two people may split times, the recreation director said. He added that many people may find it impossible to take the complete course. Therefore two people could complete the course of eight sessions.

Cost of the course is \$6 for two weeks or \$4 for one week.

## Talk Slated By Girl Scouts

WEED—Shasta Area Girl Scout Council headquarters in Redding will stage a "traveling council meeting" Thursday night, October 24, at the Mount Shasta Elementary School cafeteria at 7:30.

All interested persons are invited to attend and become acquainted with the council functions.

## Navy Band Plays Well

Majestic, stirring, powerful, jaunty, martial and pleasing. These words describe only partially the U.S. Navy Band which entertained the packed Union Court of the Klamath Union High School Thursday night.

The 50-piece band, about half of the full organization which has pleased millions with its records and radio, played such varied selections as "The Introduction to the Third Act of Lohengrin," the thrice-tongued "On The Trail," from Ferde Grofe's "Grand Canyon Suite," and Liszt's "Hungarian Rhapsody, Number 2."

Soloists, top musicians, entertained well and ably. For example, Charles Treger played his Stradivarius for the high appreciative audience. Gordon Finlay, Harold Wendt and James Mohs, triple-tongued their way on cornets through Finlay's original composition, "The Trumpeter's Carnival."

Final soloist, Ben Mitchell Morris, sang "Rodolph's Narrative" from "La Boheme," and encored with "Around the World," from Mike Todd's hit, "Around the World in 80 Days." Commander Charles Brendler was the conductor.

## Civil Service Posts Open

SACRAMENTO — The United States Civil Service Commission has announced an examination for career and career-conditional appointment with the Bureau of Reclamation to positions of laborer.

Laborers perform a wide variety of non-skilled supporting work on construction, maintenance, and operation of Bureau of Reclamation facilities. The rates of pay are \$1.55 per hour at Tulelake, California and Klamath Falls, and \$1.96 per hour at all other locations. Opportunities for employment are most likely to occur in the vicinity of the following locations in California: Tulelake, Lewiston, Redding, Folsom, Tracy, Winters, Antioch, Fresno, Lindsay, Delano, Santa Maria, and Oak View. Some vacancies may also occur in the Klamath Falls area.

A written test will not be required. Applicants will be graded on the basis of length and quality of experience as stated in their applications. For this reason the commission advises applicants to exercise care in completing their applications. Further information may usually be obtained from any post office where the announcement of examination is posted. Information may also be obtained from Bureau of Reclamation offices and from the U.S. Board of Civil Service Examiners, Bureau of Reclamation, Region 2, P. O. Box 2511, Sacramento, California.

WEED—Shasta Area Girl Scout Council headquarters in Redding will stage a "traveling council meeting" Thursday night, October 24, at the Mount Shasta Elementary School cafeteria at 7:30.

All interested persons are invited to attend and become acquainted with the council functions.

Mrs. Alice G. Jones, Weaver-ville, president of the Shasta Area Girl Scout Council, will preside. Refreshments are planned for the event by Girl Scout neighborhood chairmen of the southern Siski-you area including Weed, Mount Shasta, Dunsuir, McCloud and Pondosa.

## STUDY GROUP MEETS

WEED — "Reading in the First Grade" was the discussion topic at the October study group meeting held in the first grade rooms at the Weed Union Elementary School under the chairmanship of Lenoz Lenz, principal. First grade teachers Mrs. Ethel Cavanaugh, Mrs. Eda Ruffalo and Mrs. Evelyn Mason conducted their individual room discussions. A large representative group of parents attended.

## First Meeting Conducted By Parents-Patrons Group

The first meeting of the year for Peterson Parents and Patrons was held recently. Principal Arthur Millard and his teaching staff are to be highly complimented on the fine open house and all the work they had gone to, to make it a real informative success.

President for 1957-58, Charles Bane, welcomed the many parents who attended and introduced this year's officers. First vice president, Don Christy; second vice president, Red Groshung; secretary, Mrs. Berthel Mayfield; treasurer, Mrs. Lee Saunders; program chairman, Bob Abbey; hospitality, Mrs. Lorraine Storey; membership, Mrs. Marie Amuchastegi; publicity, Mrs. Robert B. Kennedy.

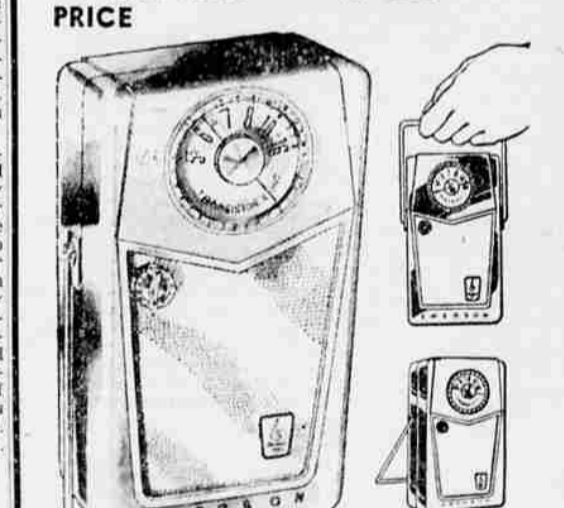
Millard introduced the teaching staff and Mrs. Mayfield presented each with a corsage. Millard gave a talk on school policy and explained the school reorganization bill.

Mrs. Isabelle Brinxer reported on the Peterson memorial fund, and presented to the school a picture of Mr. Peterson to be hung in an appropriate place. She explained that the birch trees planted on the grounds are a gift from this fund. The architect for the building was consulted on placement of the trees. Since the fund did not close exactly with these two gifts, a check was presented to the school to purchase suitable playground equipment.

Mrs. Velma Taylor's second graders won the room count prize which was awarded by Mr. Bane. Refreshments were served by the executive board at the close of the meeting.

**NOW! AT WEISFIELD'S**  
**'888' 8 TRANSISTOR**  
**Emerson**  
**PORTABLE POCKET RADIO**

**WORLD'S FIRST 8-TRANSISTOR POCKET RADIO AT THIS LOW PRICE**



**48.95**

**HI-FI TONE . . . PLAYS WHERE OTHERS FAIL!**  
• Costs LESS Than 5-Transistor Radios!  
• Instant "Warm Up"—No Waiting!

**PAY ONLY \$1 A WEEK**  
**WEISFIELD'S**  
THE WEST'S LARGEST CREDIT Jewelers  
701 MAIN STREET, KLAMATH FALLS  
Open Friday Night Till 9 p.m.

## Protest Halts Street Work

A petition containing 202 names of residents in the Upham-Oregon Avenue area was filed with Mayor Lawrence Slater on Friday, resulting in the suspension of work on an island at the intersection of Upham and Oregon Avenue.

Construction of the island had been authorized by the city council, and work had reached the point of pouring the curbs for the island, designed to divide the flow of traffic down Oregon Avenue toward the downtown area, as well as to give better upham access to traffic bound up Upham Street.

However, the petition stated that ice conditions in the area would make such an island at the intersection a traffic hazard, Mayor Slater conferred by phone with P. B. Crandall, state traffic engineer, and Crandall agreed to abandon the project and tear out the portions of the installations already completed.

Mayor Slater stated that while the council had voted favorably on the project and felt that it was needed in that particular area, none-the-less, faced with the obvious disapproval of a large segment of the people in the area, there was no other apparent course of action but to abandon the project.

## Initiation Plans Aired At Meet

Plans for an October 28 initiation were discussed at the Catholic Daughters meeting held October 14. Anyone still having application blanks out that are to be voted on should take them to the special meeting Monday, October 21, at 7:30 p.m. in Sacred Heart Parish Hall.

An 8 a.m. mass for members and initiates is scheduled for October 27, with breakfast after mass. For reservations call Margie Bocchi, TU 2-1217.

Plans were also discussed for the card party to be held November 7. Catholic Daughters are asked to leave their \$1 at Ida's Tailor Shop.

## Home Extension

BUENA VISTA  
The Buena Vista Home Extension Unit met in October at Joan's Kitchen. A demonstration of covering fabric lamp shades was given by project leaders Mrs. George Deen and Mrs. Travis Miles.

Eleven members were present to see the demonstration and to enjoy the potluck luncheon. November 21 was set for the Christmas workshop to be held at Joan's Kitchen.

Mrs. Irene Charas won the white elephant. The next meeting will be November 6 with a demonstration on textile painting. All interested persons are invited to attend.

**YOU ALWAYS GET**  
**QUALITY**  
**FRESHNESS**  
**ECONOMY**  
**WHEN YOU SHOP HERE**

**Sugar 3:25**  
Brown or Powdered

**Margarine 5:95**  
Banner Brand

**Frozen Flav-R-Pac or Libby's Strawberrys 5:95**

**Home Freezer Special!**  
**Rounds Of BEEF 49**  
Cut and Wrapped!  
Includes: Round Steaks, Rump Roast and Ground Round

**Wesson Oil ?**  
1/2 Gallon Decanter

**Instant Coffee 98**  
Chase and Sanborn 6 oz. Jar

**EGGS ?**  
Grade "AA" large and extra large strictly fresh, local ranch ? Doz.

**U.S. No. 2 Potatoes 50 lb. Bag ?**  
**Flaming Tokay Grapes 4 lbs. 25**

Specials Sold Only To Adults!  
Prices Effective Mon., Tues., Wed.  
Right Reserved To Limit

**Low Cost FOODS**  
TOWN AND COUNTRY SHOPPING CENTER

**AT YOUR SERVICE ALWAYS . . .**  
for a sandwich or a complete meal!  
Drive in for good food . . . brought right to your car.  
Low prices . . . fast service.  
Curb service, yes . . . but no curb on quality!  
**AL'S DRIVE-IN**  
1850 Main, Across From Swimming Pool

**Underwood's CAMERA SHOP**  
**KODAK** DEALER  
URGES YOU TO ENJOY  
**The ED SULLIVAN SHOW**  
KOTI-TV SUNDAY 8 P.M.