

ON THE HOUSE

The two-story house, once almost abandoned and considered obsolete, is staging a comeback.

Architects say it is slowly rising in popularity. In many developments throughout the country, they add, the two-story house is being put up as a model house—and in many cases it is proving to be a best seller.

The most popular types of homes in America are still the ranch and the split level. Their popularity is in no immediate jeopardy. The two-story house has a long way to go before catching up with the ranch and split level.

But there are several good reasons why the two-story house is regaining favor throughout the United States, according to one architect who specializes in designing small homes. He is Samuel Paul and he lists these reasons:

"The fundamental requirements of today's average family are more elaborate than they ever have been. For example, the trend is toward larger families. Many families have three or more children, requiring more bedrooms.

"An all-purpose or family room is practically a must. Also, the average family of today requires at least one and a half baths. All this adds up to increased space requirements. Additionally, being confronted with rising costs, it becomes increasingly more difficult to keep prices down to a level that the average family can afford."

"Hence," the architect adds, "it becomes necessary through ingenious planning to fulfill these requirements and yet keep building costs down. The two-story house is one answer to this problem."

There are several distinct advantages to the two-story house which have been recognized for years by architects. For instance: **MORE SECURITY**

You get top dollar value, meaning more space for less money.

With the sleeping area on the second floor, there is a greater feeling of safety and security. Heating costs also are reduced because the second floor gets the advantage of rising heat from the first floor.

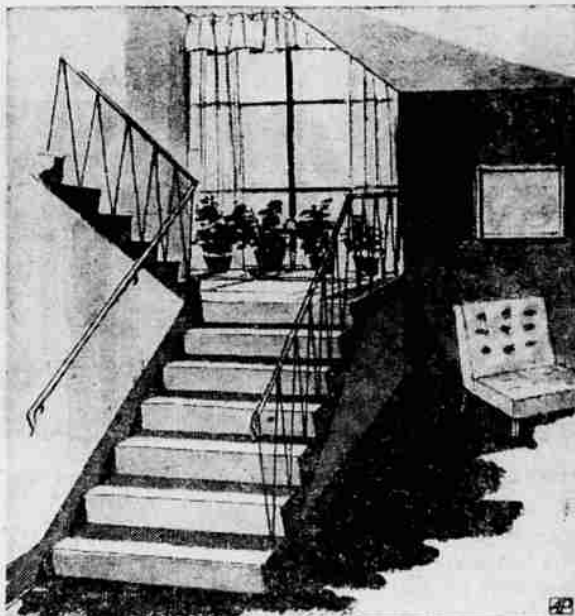
You achieve more privacy by separating sleeping quarters from living quarters.

Many families today require four bedrooms and this can be worked out easily on a second floor.

A two-story house can be built on a modest sized plot. With the high cost of land, especially in metropolitan areas this is an important consideration.

The two-story house is cheaper to maintain, and it requires less roofing and less foundation work. **BALCONIES POSSIBLE**

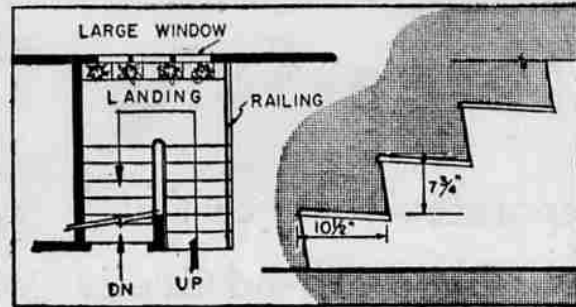
Also, second floor balconies for



THIS STAIRWAY was designed around the mid-way break which adds a cheerful note with its window and colorful plants.

outdoor living are possible in a two-story house, and the balconies would create shelter for porches below.

The main reason, of course, for the diminishing popularity of the two-story house was the stairway and the necessity for climbing up



SHOWN HERE are the stairway's turn-about feature and the innovation of a tread which slopes slightly downward. The body's center of gravity thus is pitched forward in going up the stairs, creating more comfort and stability.

and down.

Paul says, however, that it is possible to design a stairway which would minimize the effort of climbing.

For instance, he says, "a landing half way up would tend to soften the climb. A cheerful, well-lighted stairway would help, psychologically. As an added feature, several companies have developed a lift or elevator that can be incorporated into a two-story house. This is a residential type lift that is modestly priced."

It has been estimated, Paul adds, that space for space an average ranch type house would cost 15 per cent more than the two-story type, "so that even with a residential elevator, the cost of the two-story house would compare favorably with the ranch."

HOME REPAIR DO's And DON'T's

USING A HANDSAW

DO . . . in using the most common of the handsaws—the cross-cut saw—grasp the handle firmly with the right hand (if you are right-handed) so that the thumb touches one side of the handle and the index finger touches the other.

DO . . . start the cut with a couple of upward strokes, then complete the job on the down-strokes at about a 45-degree angle.

DO . . . take long, smooth strokes without fighting the wood as many beginners do.

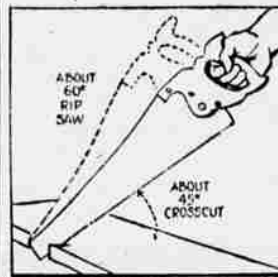
DO . . . be sure to make the cut along the outer or waste side of the pencilled or scribed line, if a precise measurement is important.

DON'T . . . forget that if you start the cut with a downward stroke, the saw may jump a bit and you may mar the wood, not to mention the possibility of suffering an injury.

DON'T . . . when you get near the end of a cut, twist the piece off with the saw blade; cut right through to the end, using extra

light cuts to avoid splitting the wood.

DON'T . . . neglect to hold the



ripsaw at an angle of about 60 degrees while cutting.

DON'T . . . ripsaw unless the work is firmly supported, either on sawhorses or in a vise.

IMPORTANT PIPE LINES

Pipe lines are the transportation link between some 500,000 producing wells at one end, and about 300 active refineries at the other.

Exclusively -



Tower Theater Bldg.
P.O. Box 596 Ph. TU 4-4023

Fiberglass Boat Building Materials

The Gun Store
714 Main Ph. TU 4-3863

DELCO ELECTRIC MOTOR SERVICE

for heating units

BURNERS • BLOWERS • PUMPS



FAST SERVICE
New • Rebuilt

We use genuine Delco electric motor parts.

East Side Electric
433 Market TU 4-3184

Bearing Fruit Trees

Plant America



for fall planting. Make your selection now while fruit is still on the trees. Plant this fall and have fruit next year.

General Landscaping, Evergreens, Shrubs, and Trees, Lawns, Sprinkling Systems, Flagstone.

Lakeshore Gardens Nursery

879 Lakeshore Drive

Phone TU 4-4286



'LIVING' FURNITURE. The sofa, lounge chair and chaise longue pictured in this modern living room all have built-in motors to give you a massage while you rest.

The Whole Joint Is Jumping

Maybe you think you've seen everything. But have you seen a living room in which every article of furniture is wired to give you a massage?

Well, such a room is a current reality, not a science-fiction

fantasy. You can buy four styles of easy chairs, a sofa and a chaise longue with built-in "cyclo-massage" motors, to slenderize the whole family while they sit or recline.

The proud parents of this new line of "living furniture" are Mr.

and Mrs. Owen K. Murphy, who bought the patents and set up shop in a chicken house on their Adamsville, Pa., farm in 1949. Now they have five manufacturing plants and expect to sell 25 million dollars' worth of their massage furniture this year.

NOW in your home! ALL-ELECTRIC truly automatic INDOOR CLIMATE

NEW G-E HEAT PUMP heats your home without fire, without burning fuel... cools and dehumidifies without water or cooling tower. Truly automatic, all-season indoor climate. Clean, convenient, safe.



HEAT PUMP

Cools and heats your home with nothing but air and electricity

GENERAL ELECTRIC

WEST

Sheet Metal Works

245 East Main

Ph. TU 4-3769 — Res. TU 4-3254