

# THE HOUSE OF THE WEEK

# Hawaiian-Inspired Ranch a Beauty

## Hospitality Is Emphasized In "Lanai" Porch

By JOHN O. B. WALLACE  
 An idea borrowed from sunny Hawaii inspired the creation of this six-room ranch house, which has as one of its major features a covered entrance patio or terrace reflecting the hospitality of the island people.

Known in Hawaii as a "lanai," or open porch, the feature is found in some of the outstanding homes in the islands. It was conceived there as a means of extending a warm welcome to guests.

In this House of The Week design, the "lanai" idea has been developed for all areas of the United States, the year round. Geographical areas and varied weather conditions do not restrict uses and advantages to the American homeowner.

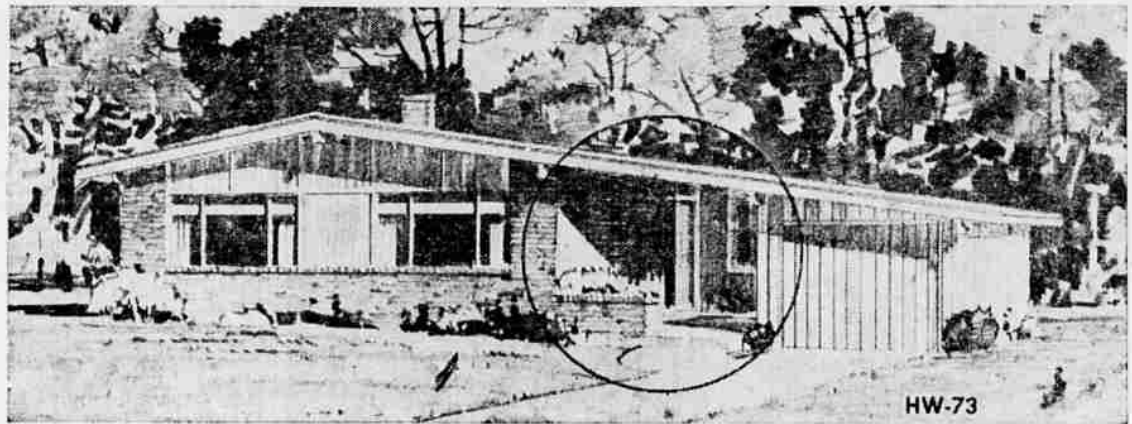
In its adaptation here, the open terrace breathes hospitality into this ranch style home. This, however, was not the only reason it was selected as The House of The Week. Recommending it also were its solid design, its well arranged interior plan and its good looks.

Numbered HW-73, it is the work of Architect Samuel Paul, who specializes in planning small homes.

Paul considers this design a successful example of exploiting an island-living idea and adapting it to American living requirements and standards.

Only a comparatively modest plot is required to accommodate this house, which has three bedrooms, dining room, living room, kitchen and two full baths. It has 1,345 square feet, excluding the garage area.

The facade is a blending of con-



**BRICK FACING**, plywood panels and vertical sidings are integrated in the facade of this stylish ranch house. Detail of circled area is below.

trasting materials which, when combined, create harmony. Brick facing has been wrapped around three sides of the two large picture windows in the living-dining room area.

Plywood panels have been used above and between the windows. Colors could be introduced into these six panels to further enhance the facade.

The brick facing has been extended around the corner of the house and into the patio, but it stops at the entrance door. There, vertical siding has been used to harmonize with the vertical siding of the garage.

Note the opening in the gently sloping roof over the patio. This permits further natural light to come into the patio.

The material for covering this opening is optional, but the architect has suggested that a plastic skydome would be a dramatic fea-

ture. Plastic is durable, too.

For the roof, white chipped marble has been selected. This material adds to the beauty of the house and it will reflect heat away from the roof during summer months.

Sliding aluminum type windows are recommended for all window areas but other materials could be substituted at the discretion of the homeowner.

In the living room, at one side of the entrance door, a decorative feature has been included. Many possibilities are offered for this area divider. Choose your own material and decorate it according to your own tastes.

Further decorating ideas could be incorporated into the ample space set aside for the living and dining rooms.

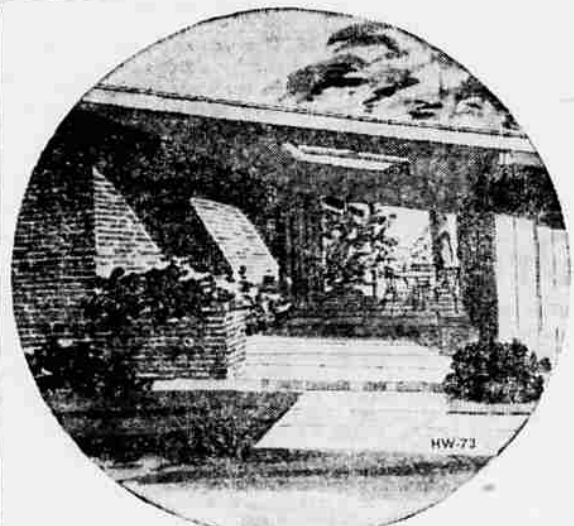
The kitchen is located conveniently and is set apart by a wall, the stairs leading down into the basement, shelves and a built-in unit; the latter is adaptable to many uses.

A stoop leads into the kitchen from the outside and takes you directly to the head of the stairs leading into the basement.

The bedrooms are in a wing to themselves at the rear of the house for privacy and quiet. The dimensions of the master bedroom are 14 feet, 8 inches by 13 feet, 4 inches.

There is ample closet space in all three bedrooms. Additional closet space has been provided at two other points—in a corridor leading into the bedroom wing from the living room and outside the master bedroom's bath.

In the floor plan, you will note that there is a rather large area outside the house, bounded by a bedroom, the patio and garage.



**THIS OPEN** but covered patio was adapted for American living from homes in the Hawaiian Islands.

This space could be used as a garden or for a planting area. Its location, happily, is at one end of the open patio.

The foliage is extended into the patio by a planter box with a profusion of vines and plants, adding color to an area nearly the length of the patio.

A cathedral ceiling has been designed for the living-dining room area. This adds dramatic spaciousness to this part of the house while at the same time drawing the area together in a unified effect.

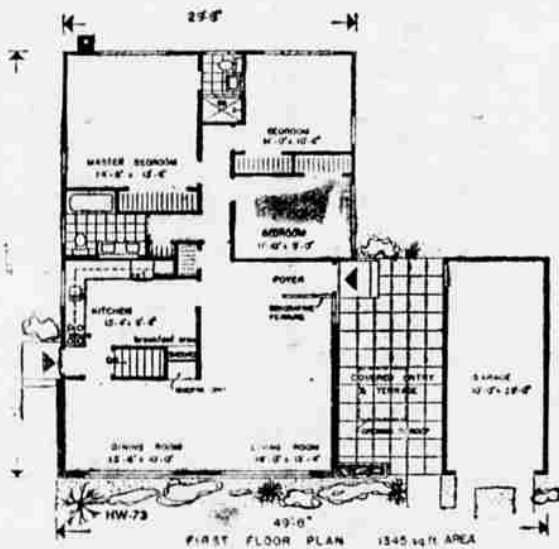
Downstairs, the basement area could be developed to the taste of the owner, but the architect's plan shows a large playroom area, a utility room and a half bath. The basement can be reached easily from the outside and there is more than average storage space.

Look, again, at the outside of this house. A dynamic effect is achieved by the sweeping, asymmetrical roof line and the long, projecting eaves and gables.

The clever use and integration of unusual materials have set this interesting ranch house apart from the ordinary.



**SHOOTING IS FUN** CAREFUL!



**COMPACT PLANNING** creates ample space for all living activities in this well designed ranch house.

**STATISTICS**  
 The house of the week HW-73, has 1,345 square feet excluding the garage. Allow 230 square feet for the garage. Architect Samuel Paul estimates that this house can be built comfortably on a plot 65 feet by 100 feet.

**Send this coupon for your STUDY PLAN**



YOU CAN GET a study plan for The House of The Week by filling in your name and address on the coupon on this page and sending it with 35 cents to this newspaper.

This study plan shows each floor of the house together with each of the four elevations, front, rear and sides of the house. It is scaled at 1/8-inch per foot. It includes a guide on "How to Get Your House Built."

You can take this study plan to your bank or other mortgage lender and to your builder and get rough estimates on the cost of construction in this area, as well as an idea of the cost in relation to your budget.

With this information you will know whether you will want to proceed with construction by ordering working blueprints direct from the architect and asking for bids for the work.

**STUDY PLAN ORDER COUPON**

Building Editor:  
 Enclosed is 35 cents. Please send me a copy of the study plan of The House of The Week, Design HW-73

Name \_\_\_\_\_ (please print)  
 Street \_\_\_\_\_  
 City \_\_\_\_\_ State \_\_\_\_\_