

THE HOUSE OF THE WEEK

Plan Blends Economy With Glamor

Terraces Surround This Home

By DAVID G. BAREUTHER

An ideal plan for indoor-outdoor living is featured in Design HW-23 for The House of The Week.

Garden terraces surround this house. Broad sliding glass doors open five rooms to breezes and sunshine.

Kitchen and family room merge into a spacious informal living area, with a barbecue fireplace in the kitchen. This arrangement spares the big living room and formal dining room from everyday wear and tear.

A gracious entrance foyer, three generously proportioned bedrooms, two bathrooms—one a split bath—complete this unusual layout.

All this and low costs, too, are made possible by expert planning, which keeps this house within 1,449 square feet and saves \$1,500 or more by substituting a crawl space for a basement.

However, this is a flexible plan. You can build a basement if you prefer. The oversize garage provides ample space for a basement stairway and service vestibule between the garage and the family room.

A distinctive feature of the exterior styling of this house is the open rafters above the terrace and the two sliding glass doors of the bedrooms. A variety of treatment is suggested by this detail. You could leave these rafters open for shadow effect. You could cover them with corrugated fiber glass sheets in a pastel color. You could grow vines over the terrace. Or you could roof it over conventionally for a covered porch.

Herman H. York, architect who specializes in suburban and country homes, designed HW-23 with a weather eye on the building dollar throughout. Room dimensions indicate the extent to which this house is planned for the use of standard lengths of lumber without the expense of cutting on the job.

Room widths of 13 feet 4 inches show the use of standard 14-foot joists with 4 inches allowed at each end for bearing and wall construction. Widths of 15 feet 4 inches



OPEN RAFTERS over terrace and sliding glass doors add distinctive note to this smart ranch house.

SLIDING DOORS DEFY WEATHER

SLIDING GLASS doors are one of the most glamorous and successful of modern building accessories. Their sturdy aluminum frames lock as securely as modern office building and store doors. Weatherstripped as thoroughly as any window or door, they defy the worst storms.

Glazed with single sheets of heavy plate glass, or with double insulating glass, they can be as comfortable in any climate as picture windows or window walls.

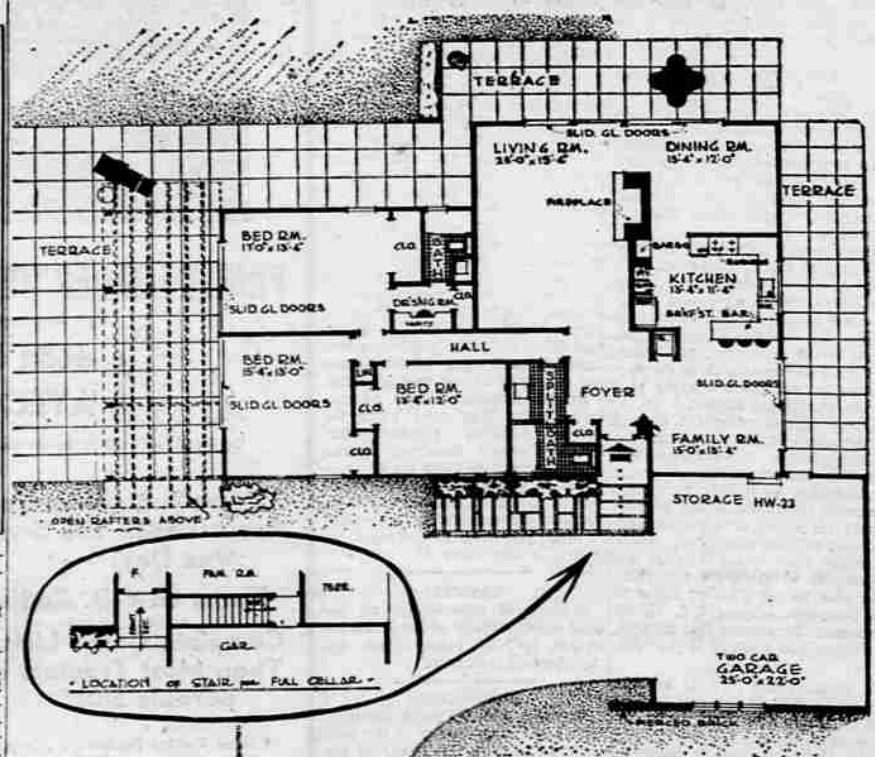
Standard height is 6 feet 10 inches, with widths of openings ranging from 6 to 16 feet.

Five pairs of sliding glass doors are used in the plan for HW-23 on this page.

es show the use of 16-foot joists—lumber being available in multiples of 2 feet.

This not only saves money but results in good room sizes.

The architect carries this prudence into the exterior design, too. He has pitched the roof just enough to permit the use of economical asphalt shingles. He suggests the use of brick veneer for an accent to the front end of the garage. This could be eliminated for economy although it provides a pleasant touch with its exten-



HOW SLIDING GLASS doors open on garden terraces from five rooms.

sion of a pierced brick wall partly screening the garage doors. Either shingles or hand split shakes could be used to side the main front wall, depending on the building budget, and the rest of the house can be finished with plain clapboard siding.

Numerous niceties of planning characterize this house. Closets are large—many of them planned with sliding doors. A private dressing room with a built-in vanity table links the master bedroom with its private bathroom. Sliding doors also open from the foyer into the powder room section of the split bathroom as well as be-

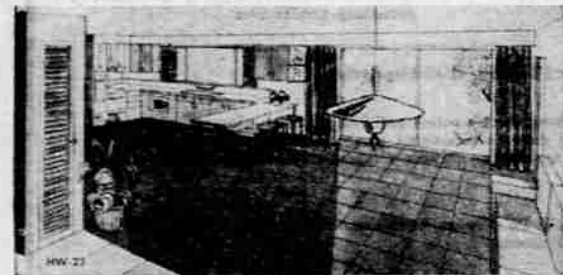
tween the two compartments of this bathroom.

A breakfast bar between the kitchen and family room is a smart provision for children's snacks as well as for informal entertaining when the family room is used for evening recreation.

The kitchen is well arranged for cabinets and appliances, with space allotted for a modern raised oven separate from countertop burners. The barbecue is convenient for serving either in the dining room or family room. Between the barbecue and refrigerator are a broom closet and a pantry closet.

By locating the foyer as a center hall, every room in the house becomes accessible from the front door without passage through another room—the dining room, of course, is accepted as an exception to this rule because of its periods of disuse.

The most glamorous feature of this house is the way its walls of glass open to let you enjoy the best of the outdoors from family room, dining room, living room and the two major bedrooms—or close weathertight to give you spectacular views of any storm from the snug and cozy security of your own home.



FAMILY ROOM and kitchen with breakfast bar between.

"A 35-CENT STUDY PLAN MAY SAVE YOU 35 YEARS OF REGRETS"

THE HOUSE OF THE WEEK

A Quality Plan Selected by AP Newsfeatures

Send this coupon for your STUDY PLAN

YOU CAN GET a study plan for The House of The Week by filling in your name and address on the coupon on this page and sending it with 35 cents to this newspaper.

This study plan shows each floor of the house together with each of the four elevations, front, rear and sides of the house. It is sealed at 3/4-inch per foot. It includes a guide on "How to Get Your House Built."

You can take this study plan to your bank or other mortgage lender and to your builder and get rough estimates on the cost of construction in this area, as well as an idea of the relation of the cost to your budget.

With this information you will know whether you will want to proceed with construction by ordering working blueprints direct from the architect and asking for bids for the work.

Herald and News

Building Editor: Enclosed is 35 cents. Please send me a copy of the study plan for The House of The Week, Design HW-23

NAME _____ (Please Print)
STREET _____
CITY _____ STATE _____