

Rancher's Report

By BILL DECKER

By BILL DECKER
The Oregon Cattlemen's Association is making an effort to determine the prevalence of losses suffered by ranchers during the hunting season just past. Forms for reporting losses and damages may be obtained from the association by writing to Box 176, Prineville, Oregon. If you know of anyone who lost cattle either by their being killed, wounded, or put astray because of hunters tell them to contact the association so that areas of the greatest frequency of trouble may be more closely watched.

Hank Matschiner, the head of our local livestock theft prevention crew, reports that several cases of wanton destruction of livestock have come to his attention. In some of these instances parts of the animals destroyed were removed, but in others the animals were left intact. Only by helping his department locate the central trouble spots can any effective patrol and investigation be instigated. If you are tired of losing stock each year, do something more than complain about it, inform the proper authorities.

The USDA has called upon potato growers to step up their potato diversions in view of the larger crop indicated by the October crop report. The October crop report estimated the fall production to be six per cent larger than the September estimate and nearly 12 per cent larger than the 1955 crop.

Because of the changed crop conditions and a larger surplus, Acting Secretary of Agriculture, True D. Morse, called on potato growers and others in the industry to utilize the potato diversion program to the maximum, particularly during the remainder of the harvesting period and the early part of the marketing season.

Morse also announced a change in the eligibility requirements for participation in the potato diversion program to encourage greater diversion. To qualify for potato diversion payments, it will be necessary for states or areas exceeding their acreage marketing guides, including those areas already approved, to withhold all cull potatoes plus 20 per cent or more of the potatoes meeting U.S. Grade Standards. Previously this percentage figure had stood at 15 per cent.

A report from Nevada reveals that more than 15 per cent of that state's alfalfa producing areas are infested with the spotted alfalfa aphid. Many ranchers in Southern Nevada report more than a 75 per cent crop loss from this pest. Last

week we published a report from the Oregon State Department of Agriculture which indicated that the aphid has not yet established itself in this state.

All wool growers should make it a point to attend the meeting with Dr. K. L. Peterson, Oregon State Veterinarian, at the fairgrounds at 7:30 p.m. on October 31 when he will show a film on the symptoms and effects of blue tongue and will explain the steps to be taken in preventing and treating the disease. The attitude of dread and secrecy which has surrounded the recent diagnosis of this disease in our area has led to the circulation of a good deal of misinformation and it is hoped that a concrete program of preventative practices will be set up. Bring your ideas and questions before Dr. Peterson Wednesday night.

Paul T. Rowell, market development chief for the state department of agriculture, has notified Oregon agricultural groups of a proposed freight increase.

Railroad firms have asked the Interstate Commerce Commission for authority to increase freight rates an additional 15 per cent, with proposed hold-downs to maximum increases of 19 cents per cwt. on fresh fruits and vegetables and canned and frozen foodstuffs, and to 12 cents per cwt. on lumber and forest products and sugar.

This proposed increase is in addition to the five to seven per cent general freight rate increases granted the railroads by the ICC on their request earlier this year.

At a conference held in Portland on October 16 at the request of Oregon Public Utilities Commissioner Charles H. Heltzel, representatives of grain producers and handlers said they would oppose the proposed 15 per cent increase.

Rowell advised Oregon agriculture groups they may write the Public Utilities Commissioner, Public Service Building, Salem, advising their position on the proposed 15 per cent increase. Deadline for filing in Washington, D.C., verified statements in opposition to this proposed rail freight increase is December 14.

SAFETY

Millions of automobiles on the road today require about 38,000,000 square feet of safety glass for replacement annually.

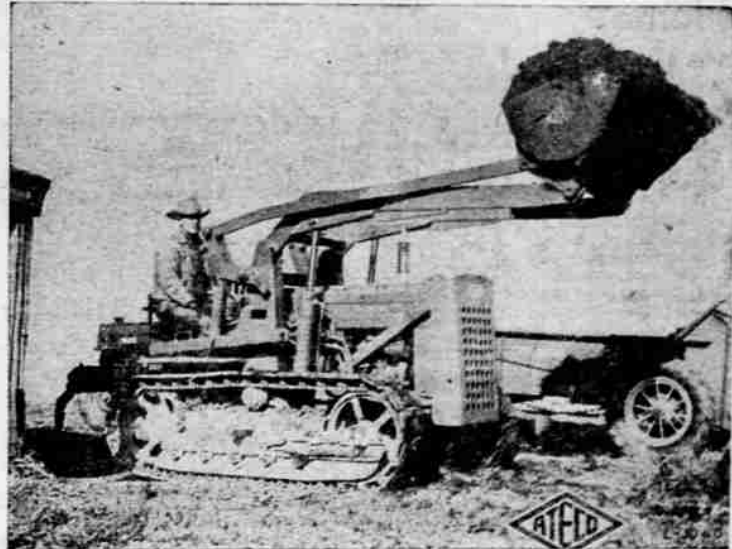
PROTECTION

Covering flat-topped furniture with plate glass is one of the best ways to protect the luster of the fine finish against mars, scratches and cigarette burns.

Wheel Tractor Troubles?

Mr. Logger, Mr. Contractor, Mr. Farmer--Get A

Free Demonstration AT THE SITE OF YOUR CHOICE!!!



FINEST LOADER 'TEAM' OF ITS SIZE EVER DEVELOPED

For Anyone with a Loading or Digging Problem

- ★ John Deere "420-C" Tractor
- ★ ATECO "L-420C" Loader

Equipped with direction-reverser that gives you 6 speeds forward and 6 speeds in reverse.

"Team" now operating in Klamath Basin Loads 100 5-yd. Trucks in One Day!

Turns on 6-ft. Radius!

Complete Outfit Lists for Less Than Most Tractors of Comparable Size!

LOOK!!

- ★ Longest Terms
 - ★ Highest Trades
 - ★ Lowest Rates
- Call Today!!

- Ideal Tractor Design . . . long, rigid track frame makes a perfect foundation for a stable, easily-handled loader. Its low-low gear, the tremendous lugging power of its engine are ideally suited to loading operations.
- Performance-Proved ATECO L-420C Loader Design is based on ATECO principles in use for more than 12 years on crawler mounted loaders. Here are a few of the many features that mean superior performance, extra-long service life:

1. Replacable lubricated pins and bushings at all hinge points.
2. Finest quality hydraulic system: double-acting polished cylinders, chromed piston rods with V-type packing; heavy duty front-mounted pump; dual control valve and ample oil reservoir . . . can also be used to operate scrapers, other hydraulically-controlled equipment.
3. Unit construction; removable in 30 minutes. Loader assembly mounts on both rigid bars of tractor with large square clamps.
4. No interference with the operator: unrestricted view, nothing to climb over or through getting on or off the tractor.
5. Bucket automatically tilts back for level lift, then returns to digging position after dumping. Bucket hinge pin is adjustable for instant hydraulic tilt-back if needed for faster loading with less spillage in gravel or dry bulk materials; leveling is automatic as bucket raises.

CALL TODAY FOR YOUR FREE DEMONSTRATION

DON POTTER MACHINERY COMPANY

YOUR JOHN DEERE DEALER

Phone TU 4-6761, 2434 So. 6th, Klamath Falls

Phone 7-1361, Tulelake

Candid Forestry BY BIM

TREE FARMS ARE GAME FARMS, TOO!

TREE FARMS GROW WILDLIFE CROPS. WHEN YOUNG TREES ARE GROWING, GRASS AND GAME-FEED GROW AMONG THEM. FOREST OWNERS GROW TWIN CROPS!