

Ike Hits Adlai's Stand On Draft, H-Bomb Tests



THERE YOU HAVE IT, MAYOR, the first ticket to the Klamath Falls police ball to be held Wednesday night, November 21, at the armory. Officer Carl Jennings (right), is on hand to make the sale to Mayor Paul O. Landry. It will be the 28th annual ball, with Dennis Lilly being chairman and Neil Leshar and Merle Young as committeemen. The event is sponsored by the Police Beneficiary Association.

District One Political Feeling Summarized

(Editor's Note: This is another in Paul Harvey's series resulting from a visit to various parts of the state. This summarizes the outlook in the First Congressional District.)

By PAUL W. HARVEY JR., Associated Press Staff Writer

Registration figures aren't all complete, but the Democrats have been gaining.

Clatsop County has switched in to the Democratic column in registration for the first time. Marion, still strongly GOP, reported a small Democratic gain. In Tillamook County, the Democrats greatly outgained the Republicans, causing a Republican editor

to omit printing this fact because of being so "ashamed."

Here's a rundown on First Congressional District sentiment in some races:

Congress — Rep. Walter Norblad, Republican veteran of 10 years, doesn't usually bother to campaign. This year, however, he is doing some work. His opponent, Jason Lee, Salem lawyer, isn't well known outside of the Salem area. Norblad seems assured of reelection.

Governor — Both parties seem agreed that Gov. Elmo Smith is leading in the district, although his Democratic opponent, State Sen. Robert D. Holmes, is coming up fast. Holmes is extremely popular in his home territory around Astoria.

Secretary of State — Monroe Sweetland, Milwaukie, Democratic Party leader, and State Sen. Mark Hatfield, Salem educator, each have solid support in their home territories. It looks close.

Treasurer — State Treasurer Sig Unander, Portland, is a heavy favorite in the district over Wiley Smith, Democrat, also of Portland.

Attorney General — Here's another case where both candidates live in the northwest district. Atty. Gen. Robert Y. Thornton, Tillamook Democrat, is a great favorite on the coast, and even the GOP leaders concede he'll lead there. State Sen. Carl Francis, Dayton lawyer, likewise is a big favorite in Yamhill County. Francis was rather depressed about his chances a few weeks ago, but he's getting more optimistic now.

An interesting close contest for the state Senate is in Tillamook and Lincoln counties, between Sen. Warren McMinimee, Tillamook Republican, and Andrew J. Naterlin, blind Newport Democrat. Each will carry his home county. McMinimee, who had been working hard, was sidelined last week with a ruptured appendix.

The voters in the district often didn't seem too familiar with the candidates for state offices, unless these candidates came from local areas. And the Morse-McKay contest overshadows everything else. It's the one that nearly everybody talks about.

SHIP LEAVES BREMEN, Germany (UP)—The U.S. troop transport "General Langitt" left for the United States Thursday with 1,250 Germans and refugee immigrants.

By THE ASSOCIATED PRESS
Democrat Adlai E. Stevenson said today a vote for President Eisenhower is a vote for Secretary of Agriculture Benson "whose friendship for the farmer"—in Stevenson's words—"depends on the proximity of an election."

In similar fashion, Stevenson attacked Vice President Nixon and other close administration associates of Eisenhower in a speech the Democratic presidential candidate prepared for a campaign stop in Lexington, Ky.

As Stevenson turned southward after whistle - stopping through Michigan and Ohio, Eisenhower went after California's 32 electoral votes.

BEFORE LEAVING
Before leaving the Pacific Northwest, Eisenhower battered some more at Stevenson's proposals that this country take the lead in seeking a way to end H-bomb tests, and that consideration be given to ending the military draft in the "foreseeable future."

Speaking last night in Portland, Ore., Eisenhower told a cheering crowd, and a nationwide TV-radio audience, that:

"I have not promised you—nor do I ever intend to—that the way to defend peace or freedom is to abandon simultaneously our military draft and testing of our most advanced military weapons, under the circumstances of today's world."

Eisenhower once again did not mention Stevenson's name as he hit his opponent on the draft and H-bomb test questions, and described as "frivolous" the charge by Stevenson and other Democrats that the GOP administration has been giving away the country's natural resources to private business interests.

SPEECH TONIGHT
Eisenhower was scheduled to make a major speech tonight in the Hollywood Bowl at Los Angeles. Arrangements were made to beam the speech over regional radio and TV.

As Stevenson headed for Kentucky, which he lost to Eisenhower by only 700 votes in 1952, one of the Democratic nominee's top strategists voiced the opinion that the current battle for the White House has reached a stage where he said the as-yet undecided voters may determine the outcome.

"I believe we have stopped the other side in its tracks," said James E. Finnegan, Stevenson's campaign manager. "We have reached a point where neither side is gaining. All we have to do now is get the undecided people in our column and we'll win this election."

In his Lexington speech, Stevenson said that if Eisenhower is re-elected, "the Republican party leadership team will take over."

"It means," Stevenson said, "that a vote for Eisenhower is a vote for Richard Nixon, because if the Republican President doesn't want or can't be the real leader of the Republican party at-

er the election, his vice president can and wants to be."

Last night, in a speech to an enthusiastic turnout in Youngstown, Ohio, Stevenson hit at the GOP on the peace question, saying:

"The uneasy position which prevails in the world today which they call 'peace' is based on a balance of terror, which is a dangerous foundation."

Meantime, Nixon rounded out a 14-state swing with scheduled appearances in Wilmington, Del., and Baltimore, Md. After a weekend of rest at his Washington home, the vice president will set out Monday on a tour, via train, through another batch of states.

After daylong stumping by car through southern New England, Nixon delivered an avowedly non-political speech last night at the annual Alfred E. Smith Memorial Dinner in New York. Smith, former New York governor, was the

unsuccessful Democratic presidential nominee in 1928.

In that speech, Nixon said the United States will overcome "our present crisis" over racial desegregation in the public schools as he said "we lived through the anti-foreign riots of the Know Nothing days and the hooded terror of the Ku Klux Klan."

Sen. Estes Kefauver of Tennessee, the Democrats' vice-presidential candidate, yesterday finished a vote-hunting expedition through drought-parched southwest Missouri and Kansas. Today, he was due to hop to Las Vegas, Nev., and Salt Lake City.

At Topeka, Kan., Kefauver said

that the Eisenhower administration's standing cases of incredible inflation's "performance on the farm" competence and mismanagement question is one of the truly out-

standing cases of incredible inflation's "performance on the farm" competence and mismanagement question is one of the truly out-

standing cases of incredible inflation's "performance on the farm" competence and mismanagement question is one of the truly out-

standing cases of incredible inflation's "performance on the farm" competence and mismanagement question is one of the truly out-

standing cases of incredible inflation's "performance on the farm" competence and mismanagement question is one of the truly out-

standing cases of incredible inflation's "performance on the farm" competence and mismanagement question is one of the truly out-

standing cases of incredible inflation's "performance on the farm" competence and mismanagement question is one of the truly out-

standing cases of incredible inflation's "performance on the farm" competence and mismanagement question is one of the truly out-

standing cases of incredible inflation's "performance on the farm" competence and mismanagement question is one of the truly out-

standing cases of incredible inflation's "performance on the farm" competence and mismanagement question is one of the truly out-

standing cases of incredible inflation's "performance on the farm" competence and mismanagement question is one of the truly out-

standing cases of incredible inflation's "performance on the farm" competence and mismanagement question is one of the truly out-

standing cases of incredible inflation's "performance on the farm" competence and mismanagement question is one of the truly out-

standing cases of incredible inflation's "performance on the farm" competence and mismanagement question is one of the truly out-

standing cases of incredible inflation's "performance on the farm" competence and mismanagement question is one of the truly out-

standing cases of incredible inflation's "performance on the farm" competence and mismanagement question is one of the truly out-

standing cases of incredible inflation's "performance on the farm" competence and mismanagement question is one of the truly out-

standing cases of incredible inflation's "performance on the farm" competence and mismanagement question is one of the truly out-

standing cases of incredible inflation's "performance on the farm" competence and mismanagement question is one of the truly out-

standing cases of incredible inflation's "performance on the farm" competence and mismanagement question is one of the truly out-

standing cases of incredible inflation's "performance on the farm" competence and mismanagement question is one of the truly out-

standing cases of incredible inflation's "performance on the farm" competence and mismanagement question is one of the truly out-

standing cases of incredible inflation's "performance on the farm" competence and mismanagement question is one of the truly out-

standing cases of incredible inflation's "performance on the farm" competence and mismanagement question is one of the truly out-

standing cases of incredible inflation's "performance on the farm" competence and mismanagement question is one of the truly out-

standing cases of incredible inflation's "performance on the farm" competence and mismanagement question is one of the truly out-

SAM COON

... WORKING MAN'S candidate

• Sam supports Ike's policies, which have meant most jobs at highest wages in history.

• Sam works hard himself; had perfect attendance record in Congress — didn't miss one roll call vote.



RE-ELECT Congressman SAM COON

FREE!
HAMBURGERS
At Pop Reid's Place
130 E. MAIN
"If you don't like 'em"
Hamburgers 25c — Coffee 5c

that the Eisenhower administration's standing cases of incredible inflation's "performance on the farm" competence and mismanagement question is one of the truly out-

Now!..... DO IT YOURSELF TV ANTENNA KITS by Weather Guard

Here's a new super-powered TV antenna in kit form, engineered for a top quality, long-lasting and complete installation—nothing else to buy. Moreover this antenna is designed for the utmost ease of assembly and installation.

See your dealer now for further information about the many features that make Weather Guard the antenna for you!

AVAILABLE AT
Home Appliance Co.
1005 Main St. Ph. TU 4-8183

SEARS Sears Days Shoe Sale!

Ends Saturday! Hurry In For These Tremendous Savings!

same insulating features used by armed forces in below zero weather!



insulated pacs

regularly 13.95 **11⁸⁸** save 2.07

Or strong latex rubber that resists scuffs. Deep cleated sole. Sizes 6-12, B to E widths.



Neoprene soles resist grease, oil

save 1.07 on Gold Bond Cushioned service oxfords

regularly 9.95 **8⁸⁸**

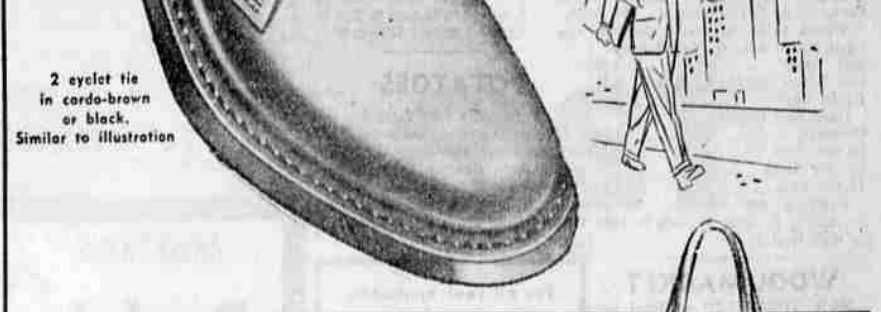
Goodyear welt construction! Nylon stitched at all strain points! Buy in sizes 6 to 12, 13. 10.95 high shoe style **9.88**

Gold Bond dress shoes men, here's style and comfort you could pay 6.98 for!



only **5.66** pair

- Goodyear welts for shape retention!
- Processed linings resist foot germs!
- Durable rubber heels and soles!
- Latest styles in brown and black!
- Buy them in sizes 6-12, B to E widths!



ON STAGE
FERLIN HUSKEY
CAPITOL RECORD STAR
★ IN PERSON ★



AND THE Hushpuppies from the world famous **GRAND OLE OPRY SHOW and DANCE**
Sat., Oct. 20th
Klamath Falls **ARMORY**
1.50 Person Tax Incl.

Locker Beef Wholesale Meats Custom Cutting DEAN HALL LOCKERS
4707 So. 6th Ph. TU 4-4788

Who uses your car? How is it used?

STATE FARM INSURANCE

Your answers may save you money!

If you are a "careful driver" and use your car for driving to work and for pleasure... State Farm insurance may save you money. Plan guarantees you pay only the minimum amount needed to protect car owners like yourself. Call me for complete information about State Farm rates.

It pays to know your STATE FARM Agent
William N. Goen
709 So. Sixth Ph. TU 4-3262



Save 15%... or almost \$1 a pair! Children's

Biltwel shoes

famous 4-Star Feature shoes req. 5.50 **4⁶⁷**

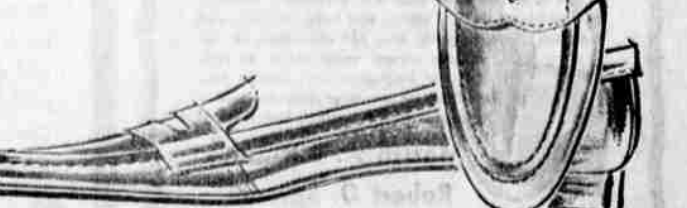
Finest quality and features for this price, we believe! Nylon stitched for strength, smooth leather insoles, strong Searolite soles, many other features. Boys', girls' sizes 8 1/2-4

"Satisfaction guaranteed on your money back" SEARS

lowest price we know for these favorite slippers—special purchase!
classic slip-ons

Req. 5.98 **4⁸⁸**

Wonderful chance for you teens and women, too, to have these best loved Kerrybrooke slippers for such a terrific price! Whitebark, Black or Brown polished leather. 4-9.



133 So. Eighth Phone TU 2-4481