



THE BIG JOB OF ORGANIZING COUNTY FORCES for the 1957 United Fund-Red Cross campaign has been assigned by Noel Flynn, campaign chairman, to Bob Beach (left) and Wyatt Padgett (center). Shown checking a map of Klamath County—one of the state's largest—with the county heads is T. J. McCarry, who with Jack Otterbein is an associate drive chairman. Beach, a Klamath Falls jeweler, was campaign chairman last year. Padgett is identified with Driscoll and Padgett Insurance.

AUTHOR'S WIDOW DIES

SOUTHWICK, Maas. (A) — Mrs. Emma S. Bellamy, 95, widow of the author of "Looking Backward," a novel popular two generations ago, died Tuesday. She

was the sister-in-law of the late Charles J. Bellamy, founder of the Springfield (Mass.) Daily News, and the mother of the late Paul Bellamy, editor of the Cleveland Plain Dealer.

REPATRIATION

MAIZURA, Japan (A)—The 15th group of Japanese to return from Red China since repatriation started in March, 1953, arrived today. Among the 628 persons were 354 prisoners of war.

Adlai Receives Boos, Hurrahs At Legion Talk

SAN FRANCISCO (A)—Adlai E. Stevenson came through some rough razzing from the American Legion minus any obvious chip on his shoulder.

The Democratic presidential nominee roused the Legion to both bravos and boos when he addressed its national convention in Los Angeles yesterday.

Today he had a speaking date before another and probably more friendly convention, a gathering of the International Assn. of Machinists in the San Francisco Civic Auditorium. Organized labor generally looks more favorably upon the Democrats than upon the Republicans.

ADVANCE WORD

The advance word from Clayton Fritchey, Stevenson's press secretary, was that "you can bet the speech to the machinists won't be anti-labor."

For that matter Stevenson's address to the Legion wasn't anti-union. But parts of it were pretty much anti-Republican. And the reaction from an organization with a membership with divided party loyalties was a mixture of hurrahs and boos.

FILM PLANNED

MOUNT SHASTA — Friday and Saturday of this week the Shastona Theater will show the newsreel of film taken on the slopes of Mt. Shasta during the Everitt Memorial Highway ground breaking ceremonies. The film was air expressed to New York for quick processing.

The applause and cheering was more frequent and in greater volume. But the boos still added up to one of the severest hecklings any man running for president has received in recent political history.

Some of Stevenson's associates were saying the boosing was a demonstration of bad taste and manners, inasmuch as Stevenson had been invited to address the Legion convention.

But the Democratic nominee himself showed little vexation. And aides who helped assemble material for the speech said they wouldn't change a word if it had to be given over again.

Fritchey told a reporter Stevenson wasn't upset over the boosing evoked by what the press secretary called one of the most significant speeches Stevenson will make during the presidential campaign.

MIXED REACTIONS

"Maybe the mixed reaction will be a good thing, if it sets people to thinking," Fritchey said.

Still, some of the people around Stevenson conceded they were surprised at the volume of boosing.

It began, as an overture to thundering applause, before the Democratic nominee said a word, when he walked onto the stage of the Shrine Auditorium in Los Angeles with his vice presidential running mate, Estes Kefauver.

It reached a peak near the end of the speech, when Stevenson remarked that those who play politics with foreign policy are ene-

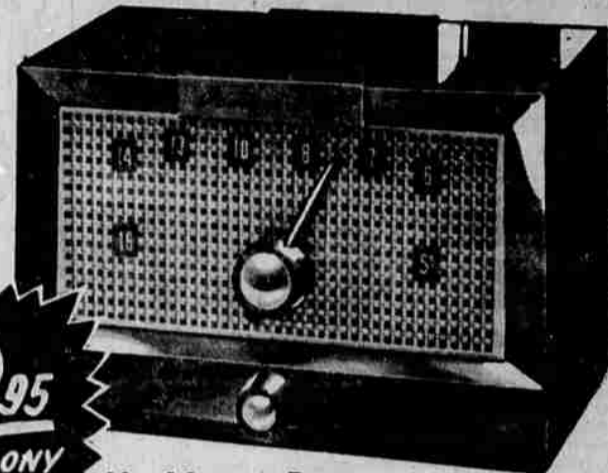
mies of peace, adding: "I would remind you that the gross harassed the Republican considered forming a third party."

WEISFIELD'S 10-Day Home Trial THE SENSATIONAL NEW

Packard-Bell Table Radio Clock Radio

5-TUBE TABLE RADIO

POWERFUL 5-tube chassis High Impedance Loop Antenna Sweep Dial Tuning Indicator Heavy Duty PM Dynamic Speaker

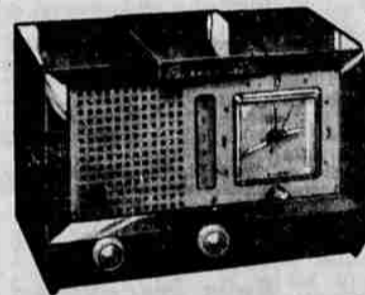


12.95 EBONY

No Money Down As Little as 50c A Wk.

Choice of yellow, pink turquoise, red, white

14.95



PACKARD-BELL CLOCK RADIO

Makes early rising easy at a cost so low. Plugs into any AC-DC outlet. Exceptional tone quality. In Ivory, Bronze, red, Mint Green

21.95

19.95 EBONY

ORDER BY MAIL

WEISFIELD'S JEWELERS 701 MAIN ST. Please send me the (color) as advertised in and will send per week or \$ per mo. until the entire amount is paid. NAME PHONE ADDRESS HOW LONG CITY ZONE STATE WHERE EMPLOYED HOW LONG CREDIT REFERENCES (Firm names and where located)

WEISFIELD'S THE WEST'S LARGEST CREDIT Jewelers

701 MAIN STREET Open Fri. Night Till 9 p.m.

HERE'S WHY WEISFIELD'S SELL MORE DIAMONDS THAN ANY OTHER JEWELER IN THE WEST

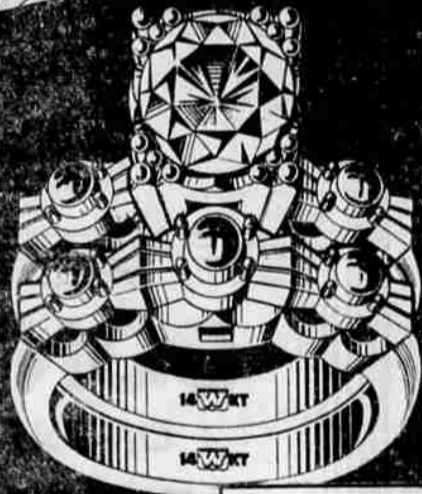
PRESENTING THE NEW Embraceable INTERLOCKING DIAMOND BRIDAL SERIES

Your Invitation to Romance



SYMBOL OF GOOD LUCK AND ENDLESS DEVOTION FOR THOSE YOU LOVE...

Exclusive... a fabulous collection of beautiful diamond rings... every one a brand new, up-to-the-minute style. Bridal pairs with the new interlocking device. All mountings in rich 14-karat gold. Shown are just a few of the many lovely styles.



"THE DAISY" Large Solitaire DIAMOND BRIDAL PAIR Beautifully carved 14-karat gold mountings **59.50** NO MONEY DOWN... EASY TERMS



"THE DEBORAH" 6-DIAMOND BRIDAL PAIR 14-Karat gold mountings **129.00** LOW EASY TERMS



"THE VICEROY" MAN'S LARGE DIAMOND 14-Karat gold mountings **169.50** LOW EASY TERMS

"THE DORIS" 8-DIAMOND BRIDAL PAIR 14-Karat gold mountings **137.50** LOW EASY TERMS

USE WEISFIELD'S SIMPLIFIED CREDIT YOU DON'T NEED CASH NO MONEY DOWN

★ ORDER BY MAIL ★



WEISFIELD'S THE WEST COAST'S LARGEST CREDIT Jewelers

Store Hours: 9:30 A.M. to 5:30 P.M.

701 MAIN STREET OPEN FRIDAY NIGHT TILL 9 P.M.

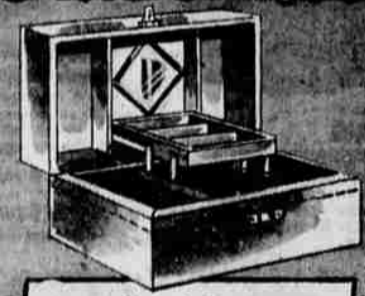
Weisfield's, Inc. 701 Main Street Please send me the (color) as advertised. Enclosed is \$... I will pay balance at \$... per week or \$... per month until the entire amount plus taxes is paid. My ring size is... NAME... PHONE... ADDRESS... ZONE... CITY... STATE... EMPLOYED BY... CREDIT REFERENCE...

Here's Proof Your Dollar Buys MORE DURING WEISFIELD DAYS



Jeweled — German Import **TRAVEL ALARM CLOCKS**

Reg. \$9.95 **4.88** A Back-to-College Special! Precision construction, brass polished case, lizard, Morocco covered. **NO MONEY DOWN**



Choice of Colors **LARGE JEWEL BOXES**

Reg. \$5.95 **3.69** Satin and velveteen lined. Earring tray. Nicely decorated simulated leather. With lock and key. **NO MONEY DOWN**



NEW 1957 MODEL REMINGTON TRAVEL-RITER

SPECIAL 79.95

A 15-pound portable with ALL essential operating features. College keyboard for no extra charge.

ONLY \$2 A WEEK

Use Weisfield's Layaway Plan

701 MAIN STORE HOURS: 9:30 a.m. to 5:30 p.m. Open Friday Till 9 p.m.

WEISFIELD'S THE WEST'S LARGEST CREDIT Jewelers