



"The prosecutor pointed his finger too close to an angry woman witness yesterday!"

Negro Coed Exclusion Seen As Win For Segregation

TUSCALOOSA, Ala. (AP)—Demonstrators who rocked the University of Alabama campus with a day of violence won a victory last night when a Negro coed was excluded from classes "until further notice."

The announcement of the University Board of Trustees was made late last night while about 1,000 students and others surged across the campus and for a time defied police firing tear gas.

The disturbances began Friday night after Autherine Lucy, 26-year-old Birmingham Negro, was admitted to classes in obedience to a federal court order.

Miss Lucy was not available for immediate comment on the board's decision, reached at an emergency meeting closed to newsmen.

A board statement said the action was taken "in view of recent occurrences on the campus and the acts and threats of violence participated in by outsiders, for the safety of Autherine Lucy, a student recently admitted under the order of the federal court, and for the safety of other students, and of faculty members of the University of Alabama, and only for that reason."

The statement said further that the board, "exercising the police power of the University of Alabama for the safety of those on the campus . . . excludes Autherine Lucy until further notice from attending classes at the university."

By invoking the police power of the university, the trustees laid the groundwork for a legal defense if they are charged with violating terms of a 1955 federal court order opening the school to Negro students.

While most of those taking part in the demonstrations appeared to

Sudan Receives UN Membership

UNITED NATIONS, N.Y. (AP)—The new African republic of Sudan today had the unanimous approval of the U.N. Security Council on its bid for U.N. membership.

The United States, Britain and France proposed acceptance yesterday and Russia supported the bid. The U.N. General Assembly is expected to vote in Sudan at the 77th member when it meets next fall.

Sudan, with a population of 10 million, became an independent republic Jan. 1 after 57 years under joint British and Egyptian rule.

Dr. O. C. Carmichael, university president, had told faculty members that unless law and order were restored on the campus, "it may be necessary to close up shop." He later said there was "reasonable hope that order will shortly be restored."

Chas. J. Cizek
TAILOR
Suits Made To Order
Perfect Fit Guaranteed
119 SOUTH 7th

Mansure Quits As Service Chief; Floete Appointed

WASHINGTON (AP)—Edmund F. Mansure has quit as general services chief in the midst of congressional and administration investigations of his official conduct.

Mansure's resignation—effective on or about next Friday—was announced by the White House late yesterday.

To replace Mansure, President Eisenhower appointed Franklin G. Floete as acting general services administrator pending Floete's formal nomination to head the government's vast housekeeping operations.

The 66-year-old Floete, a resident of Des Moines, Iowa, now is assistant secretary of defense in charge of properties and installations.

An exchange of Mansure and Eisenhower letters, made public by the White House, made no mention of charges that Mansure had recommended a Chicago Republican leader for insurance brokerage business in connection with a \$3-million-dollar government nickel plant expansion project in Cuba.

Mansure has denied these charges in testimony before a House Government Operations subcommittee. After the House investigation started, Eisenhower asked for a special report on Mansure's role in the case.

In his resignation letter—signed "Ed"—Mansure told Eisenhower he was impelled by "personal obligations" to return to private life. Before becoming GSA chief 33 months ago, Mansure, 54, was a manufacturing executive in Chicago.

The President's reply—addressed to "Mr. Mansure"—said Eisenhower respects "the reasons you have given" for wanting to leave government service. Eisenhower thanked Mansure for the 400 million dollars in savings and for improvements the outgoing GSA head claimed to have made during his tenure.

James C. Hagerty, White House press secretary, said in response to questions that Eisenhower did not ask for Mansure's resignation. A GSA spokesman described Mansure's departure as "voluntary."

Hagerty also said, when asked, that the administration's check on Mansure and the nickel project allegations still is in progress. Hagerty said a report has not yet been drafted.

Rep. Jack Brooks (D-Tex.), chairman of the investigating subcommittee, said Mansure's resignation came "as no surprise to me." He added a hope that "this will result in a more efficient and economical administration at GSA."

The Brooks subcommittee has announced plans to reopen hearings on what its chairman said were "basic conflicts" in testimony about whether Mansure did, or did not, steer insurance brokerage business to William J. Balmer, Mansure's Chicago friend.

In previous hearings, Randall Cremer, supervising engineer of the nickel expansion project at Nicaro, testified that Mansure had suggested Balmer for the brokerage. But Balmer backed up Mansure's denial, telling the subcommittee he landed the account on his own.

DR. J. W. LOWE
Chiropractic Physician
Complete Spinal Treatment
111 So. 4th St. Stevens Hotel Bldg.
Office Ph. 2-1131 - Res. 2-0182

CLOSE OUT SALE
Now In Progress At
Art-Needlework
SHOPPE
412 Main
New Location 1933 S. 6th

CONTRACTORS BUILDERS FARMERS
For Quick Heat
Rent the MASTER
Portable Heater
For Sale or Rent by
TROY V. COOK
New Location 1933 S. 6th

Give "MOM" a treat
BING'S
DINE TONIGHT
3660 So. 6th
TOWN & COUNTRY
featuring
* Fine Food
* Reasonable Prices
Special Attention Given To
The Kiddies!

An important announcement from Kellogg's of Battle Creek

By W. H. Vanderploeg
President, Kellogg Company

BEFORE our founder, W. K. Kellogg, died in 1951, he had a great concept about a new cereal. He believed that valuable properties of other foods could be combined with those of the grains in such a way as to produce a concentrated high-quality protein food in a delicious new cereal form.

It has been my privilege to carry this idea forward. For the past four years, we at Kellogg's have been working hand in hand with two of our great universities on this project. Out of it has come an achievement that is perhaps the greatest in our history.

This new cereal food is an unusual combination of nourishing grains and other natural foods including milk and yeast.

It's a ready-to-eat cereal remarkably rich in high-quality protein—about twice as much as the average, and more protein than in any other well-known cereal, hot or cold.

It has a combination of vitamins specified for us by the nutrition departments of the universities who worked with us as being most needed by most people.

Yet the surprising thing is that with all its health-giving properties—this is probably the most enjoyable cereal anyone has ever put into his mouth. It's not quite a puff, not quite a flake, but I can assure you, it's unusually tempting to eat.

You may be interested in knowing what happened when we sent this new high-protein cereal out in a plain package to several thousand people whose opinions are rather important to us—people just like you.

To begin with, 4 out of 5 started off by saying how much they liked its taste.

One physician said: "This is not just a new cereal—it's a new protein food."

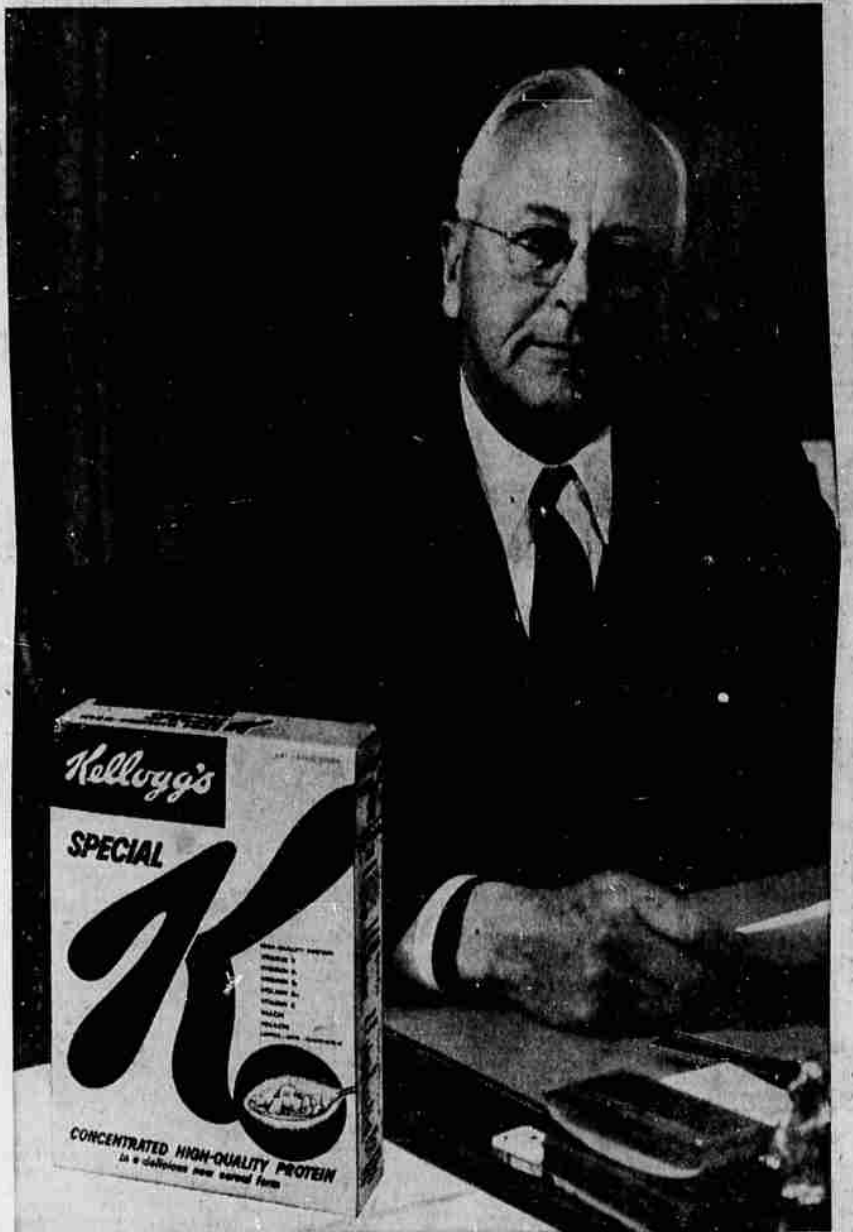
A food editor told us: "It's amazing that a cereal with so much solid nourishment could be so light and tasty."

We're calling the new cereal our Special K because we feel the big red "K" in our trade mark is more or less our coat of arms.

Special K is on hand now at most grocer's. We want you to try it for its unusual flavor and excellent health benefits. We particularly address this invitation to people who haven't been eating cereals too frequently.

We feel sure you'll enjoy Special K, for breakfast and any time of day you want something wholesome and good tasting.

Kellogg's OF BATTLE CREEK



Here's the Nutrition Story of Special K

WHAT 1 OUNCE OF SPECIAL K HAS	WHY YOU NEED IT	WHERE TO GET THE REST OF WHAT YOU NEED
PROTEIN More than any other leading cereal—hot or cold—twice as much as their average: high-quality protein—from grain, milk, yeast. Special K is the only leading cereal containing added costly, protein-rich wheat gluten and wheat germ. One serving, with milk, produces 15% of a grown man's daily recommended allowance.	Essential to nerve function, utilization of carbohydrates, stimulates good appetite.	From foods of animal origin like meat, milk, eggs and fish, and from mixtures of vegetable proteins such as provided by beans, peas, grains.
VITAMIN D A full day's recommended allowance. (Recommended daily allowance for children and adolescent and nursing mothers. Recommended allowances of other adults not specified.)	Essential to children for calcium utilization and normal bone and tooth development. A protective supplement particularly in winter months.	Irradiated milk and milk products, fish oils, liver, eggs, sunlight.
VITAMIN B1 (thiamine) —One-fourth of a day's recommended allowance.	Essential to nerve function, utilization of carbohydrates, stimulates good appetite.	Meats (especially pork), grains, milk, vegetables, and fruits, all contribute.
VITAMIN B2 (riboflavin) —More than 30% of a day's recommended allowance.	Essential to growth, normal digestion, normal vision, healthy skin.	Liver, milk products, eggs, some leafy vegetables.
VITAMIN C One-eighth of a day's recommended allowance.	Helps maintain healthy teeth and gums, aids tissue repair. The antioxidant vitamin.	Citrus fruits, tomatoes, green and leafy vegetables, baked potatoes.
NIACINAMIDE More than 30% of a day's recommended allowance.	Important to condition of skin and nerves—the anti-pellagra vitamin.	Liver, peanuts, poultry, peas, beans.
VITAMIN B12 Scientists have not fully determined human recommended allowance. Special K contains an amount judged by authorities to equal a day's recommended allowance.	Essential to formation (with iron) of red blood cells. Possibly important to other body functions.	Meats, especially liver and kidney.
COPPER-IRON More than one-third of a day's recommended allowance of each.	These two minerals are both essential to red blood cell formation.	Meats, green vegetables, peas, beans.

SPECIAL K also contains **FOLACIN**, a nutritionally significant vitamin on which exact recommended allowances have not been determined, **CALCIUM, PHOSPHORUS, IODINE.**

Miller's

Beautiful Gift for Dutiful Valentines

Streamlite Samsonite Luggage

HAT BOX \$15

TWO-SUITER \$25

Here's a wonderful way to say "Our love will last!" Samsonite is built to last. It's a gift that's as practical as it is thoughtful. You can choose from many lovely "better-than-leather" finishes that defy wear and wipe clean with a damp cloth...and the price range is only \$15 to \$35.

FOR HIM:
QUICK TRIPPER\$19.50
TWO-SUITER (shown)\$25.00
JOURNEYER\$27.50
PULLMAN CASE\$27.50

FOR HER:
HAT BOX (shown)\$15.00
LADIES' O'NITE\$19.50
HANG-IT-ALL\$25.00
LADIES' WARDROBE\$25.00
TRAIN CASE\$17.50
PULLMAN CASE\$27.50
PERSONAL O'NITE\$17.50
HAND WARDROBE\$35.00

*Plus mailing taxes