



# FAMILY ALBUM

BY LYLE DOWNING

## CHARLIE SCHUSS



Then



Now

Charlie Schuss, proprietor of the Klamath Billiards and the Chuck Wagon, and that famous eleventh century poet-astronomer, Omar Khayyam, had one thing in common. They both were intensely interested in wine.

Omar used the juice of the grape to inspire immortal verse. Schuss took a mercenary attitude toward the ancient beverage.

From his point of view, wine was made to sell, not to drink. In 1935 he operated wine stores in Klamath Falls, Medford, Bend, Salem and Coos Bay under the banner of the Schuss Vintage Company.

However, Schuss didn't stay in the wine business long. He decided to center his activities in Klamath

Falls and opened Schuss' Tavern, now operated by Skeets O'Connell. In 1950 with his father, Joseph Schuss, he bought the Klamath Billiards from Louis Soukoup. A year later he opened the Chuck Wagon Cafe.

Charles Schuss was born in Chelsea, Washington, August 8, 1908. He attended grammar and high school there. In 1926 he entered the school of business administration at the University of Washington. He spent three years in that institution and then transferred to the University of Southern California, from which he was graduated in 1930.

**HAD BIG IDEAS**  
Schuss admits he had big ideas in those days. The ink on his

diploma had hardly dried before he decided to put his business training to work on a large scale. He transferred to New York City. At that time, business experts were a drug on the market, so he took a job as a clerk in an Atlantic & Pacific chain grocery store on Long Island. When he severed his connection with A&P, Schuss was manager of one of the firm's stores at Forest Hills, Long Island.

"I decided they might need some business experts in the Far West," he explained. "So I headed back to the Pacific Coast."

In 1934, Schuss obtained a strong incentive to settle down by marrying Myrtle Collier of Klamath Falls. Most of his time has since been spent in the Klamath Basin except during World War II when he was in the U.S. Air Force. He didn't leave the United States, but was stationed at air bases in Klamath Falls, Lincoln, Nebraska, Salt Lake City and Ephrata, Washington.

## Air Force Institutes New 'Base Of Choice' Program

Ex-servicemen from the Klamath Falls area who would have given the Government Issue shirts off their backs to be assigned a particular base or post during their last "hitch" were kept in mind when the Air Force drew up the "Base of Choice" provisions for its new Prior Service Program.

"Portland AFB, Hamilton AFB, and as soon as it is activated, the new Air Base at Klamath Falls are typical of the Air Force bases in this area for which prior servicemen from Klamath Falls may be eligible to enlist," said Sgt. Don Adams, local U.S. Air Force recruiter-salesman. "More than 40 different Air Force bases and organizations are located in the Far West states alone, for which qualified prior servicemen may enlist."

Assignment to a particular Air Force base organization is open to "vets" with the proper service skills and who have returned from overseas military duty within the last 12 months, Sergeant Adams explained.

"However," he added, "a wide

variety of job specialists exist which may qualify prior servicemen and women to select a particular base within the United States or a particular overseas theater."

Provisions of the new Prior Service Program also allow qualified ex-servicemen from other branches of the service, as well as Air Force "vets," to enlist for a selected Air Force base or organization, many in the same rank held at time of discharge.

"Of course," Sergeant Adams said, "the prior serviceman is also provided transportation to this base for himself and his dependents at government expense, as well as movement of his household goods, within the regular limits."

Specific details on the "Base of Choice" opportunities open to veterans, as well as the other benefits of the Air Force's new Prior Service Program, may be obtained from Sergeant Adams at the U.S. Air Force Recruiting Station, in the post office building, in Klamath Falls.

## 'Friendly Atmosphere' Said Needed To Attract Industry

**DUNSMUIR**—"A friendly atmosphere is a community's most important quality in attracting industry and growth," Arthur St. Clair, industrial development expert for the California Department of Employment, told the Dunsuir Chamber of Commerce on Wednesday evening.

"And everyone has to work at it," he added.

St. Clair pointed out that being on one of the state's busiest highways was an asset not to be overlooked. Some traveler, properly impressed, is apt to be just the man to bring the industry the town is seeking. He told the chamber of commerce members that distance from a large city presents a difficulty in attracting industry but this can be overcome by having a statistical survey on file with banks and railroad companies receiving inquiries on prospective industrial sites.

These statistics should include all of southern Siskiyou County, St. Clair said, as any development in the area would bring gain to Dunsuir.

In planning for action, St. Clair said, all organizations should be included as boosters for the town. He suggested a paint-up, dress-up campaign to give the community a thriving look and told how cooperation among the merchants by using a central "theme" could help a town's appearance.

Preparation of an industrial survey listing such factors as weather, population, housing, transportation, raw materials and available power is a must, St. Clair stated. He also said that a survey should be made to see if money could be

## Klamath Gets Liquor Money

Issuance of liquor licenses during 1955 resulted in allocation this month of \$607,415.50 to counties, incorporated cities and the general fund of the state. The Oregon liquor control commission reports that warrants totalling \$363,186.90, representing 60 per cent of license fees collected, are being allocated to localities. Of this amount Klamath County received \$4,790.55; Bonanza \$123.27; Clifton \$92.45; Klamath Falls \$6,944.52; Merrill \$329.59; Merrill \$764.27.

Forty per cent of the earned license revenue, or \$242,134.60, plus revenue from out of state licenses and sale of lists, bring the total distribution to the general fund to \$244,228.60.

Distributions are made in accordance with the liquor control act which specifies that 60 per cent of license fees return to the locality in which the licensed outlet is located, and the remainder go to the general fund of the state.

**DR. J. W. LOWE**  
Chiropractic Physician  
Complete Spinal Treatment  
Office Ph 2-1131 - Res. 2-0182  
111 So. 4th St. Stevens Hotel Bldg.

**OFFICE SPACE**  
City Center  
Main street entrance. Quiet  
Tenants. Draws Monitors.

**Get Marvelous KING-OF-ALL To Clean Your Septic Tanks and Cesspools - And to Keep Them Clean**

We guarantee satisfaction or your money back.

Get King-Of-All today at your local Feed & Seed, Hardware, Plumber or Bldg. Supply Store.

## Broader Limits Announced In Filing For Dependents

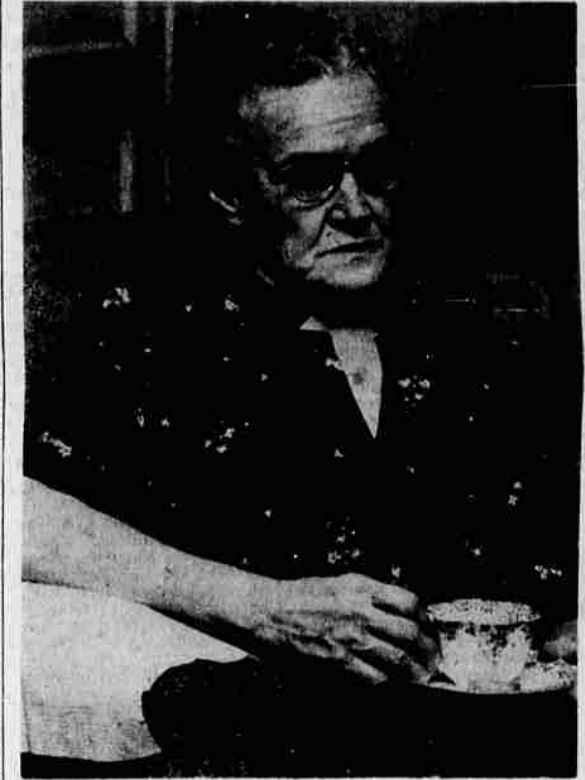
**(Editor's Note: What dependents are you entitled to claim in filing your federal income tax returns? Based on questions most frequently asked by taxpayers in this state, the tax information committee of the Oregon Association of Public Accountants has prepared this discussion of vital dependency considerations. The Herald and News presents it as another reader service.)**

Under the 1954 tax code, broader limits have been established whereby a person may be claimed as a dependent for tax purposes. To claim an individual as a dependent on your federal return, there are five general tests which should be considered:

- 1. Relationship**—In general, the dependent claimed must be closely related to you. This relationship may include: Your child or children's descendants (legally adopted child is considered a child by blood); stepchild (but not his descendants); your brother, sister, half-brother, half-sister, stepbrother or step-sister; your parent, grandparent or other direct ancestor (but not foster parent); your stepfather or stepmother; your brother's or sister's son or daughter (i.e. direct nephew or niece); your father's or mother's brother or sister (direct uncle or aunt); or your son-in-law, daughter-in-law, father-in-law, mother-in-law, brother-in-law, or sister-in-law.
- 2. Support**—The individual claimed as a dependent generally must receive more than one-half his support from you. There are two exceptions: (A) When two or more persons join in the support of another individual and all other tests are met, except for the support provision, they may agree by means of a multiple support agreement to allow one who contributes more than one-half of the dependent's support to claim the exemption. All who contribute more than 10 per cent must agree in written form that they will not claim the same dependency exemption. (B) Now in the case of a son, daughter or stepchild who is a student and received a scholarship, the amount of the grant need not be considered in determining whether you have furnished more than one-half the support.
- 3. Dependent's gross income**—This figure must be less than \$600 for the calendar year in which your taxable year begins before you are entitled to claim the individual as a dependent. However, your child may receive gross income of \$600 or more and still be claimed as a dependent, provided (A) he is less than 19 years of age or (B) a student who is regularly enrolled full time in a school for at least five calendar months of your tax year. A recognized, supervised, full-time on-farm training course can qualify, but not night school training while working days, nor correspondence courses, nor other on-job training courses.
- 4. Citizenship and residence**—The dependent must qualify under specific provisions of law concerning citizenship and residence. He must be a citizen or resident of this country, or a resident of Canada, Mexico, the Canal Zone, or the Republic of Panama. A person living outside any of these boundaries must be a citizen of the U.S. to qualify as a dependent.
- 5. Joint returns**—The dependent must not file a joint return with his or her spouse.

Each qualification must be fully met as applied to each individual claimed, except as specifically provided in the foregoing tests. Often unusual or borderline cases may arise, the public accountants who prepared this series have found in such cases professional assistance will prove wise.

**RESIDENT DIES**  
VATICAN CITY, (AP)—The Vatican city's oldest resident, 91-year-old Maria Bonatti, died Thursday night after receiving the blessing of Pope Pius XII. A widow, she was the mother of Pietro Bonatti, custodian of the Vatican's famed Sistine Chapel.



Mabel Elizabeth Biehn Ward

## Mabel Biehn Recalls Many Of City's 'Growing Pains'

Motorists and pedestrians who travel up and down Biehn Street in the western section of Klamath Falls may never ponder on "whence came the name" that is so closely linked with the swaddling clothes days of the city.

The street honors Louie Biehn, who came to Linkville with the Oregon State Militia in the wake of the Indian war, and his wife Alice, who raised a family of 11 sons and daughters. Louie Biehn hailed the first piano into the town for Molly Reames, laid the corner stone for the old Central School and cut ice from Upper Klamath Lake for sale to townsfolk.

A daughter, Mabel Elizabeth Biehn Ward, eldest child, now manager of the Zigler Motel on Highway 97 recalls many of the growing pains of the new town in pre-railroad days. She was born on February 8, 1900, and was mar-

**To see better... Just see us!**

We'll check your eyes scientifically... fit you with proper glasses in attractive frames.

**WILLIAM T. HODSON, O.D.**  
VISION SPECIALIST... with offices at —  
**Standard Optical Company**  
715 Main Street Phone 8322

**They'll Do It Every Time** By Jimmy Hatlo

**HOWCUM DEPT. IT SEEMS THE WORST BATTERED BRICKS GO INTO THE FRONT WALL OF THE NEW BUILDING...**

**BUT THE BACK WALL, WHERE NOBODY CARES HOW IT LOOKS, ALWAYS TURNS OUT LIKE THE TAJ MAHAL...**

THANK AND A TIP OF THE HAT TO MAY TO ENL STEENHY, 12 UNION AVE. MAPLEWOOD, N.J.

## Dear Folks....

That bumpy, bone-jolting street we live on isn't any more! No sir. It has a smooth covering of crushed rock... thanks to a fine display of community spirit. When I got home Monday night after work, Mike Beldraine was there to meet me. "Can you be at a meeting at my shop tonight?" he asked.

I was there, along with 21 other residents on the street, plus county commissioner Ed Gowen. According to Gowen, most of the streets in the south suburbs are private streets... and the county has no control over them. If anything is to be done to get rid of the bumps, the property owners must do it themselves.

And so it was. With some suggestions from Jim Fisher and price quotations from gravel-man Al Schrieber, the property owners voted to have the street graveled. By Wednesday evening the job was finished. Now you can drive down the street without breaking your back and without putting your car in the garage three days for repairs. One thing to remember... there are about 30 kids that live on that street... kids that might take a notion to dart across it. So drive carefully, won't you?

One thing that the kids are looking forward to is Valentines Day which comes up in a couple of weeks. And you won't find a better selection of Valentines than at WOOD'S DRUG STORE in the Medical-Dental building. Will Wood has Valentines that say just about anything you want to say. Best of all, prices start at a penny.

There is no better way to say "Be My Valentine" than with heart-shaped box of chocolates. At WOOD'S DRUG STORE you'll find a fine selection by Miss Saylor's, Taylors, Classic and Mary Alice. Only 75¢ for a big half-pound box.

Keep in mind, too, that for prescriptions you can't beat the service at WOOD'S DRUG STORE in the Medical-Dental Building.

Out to see fellow ex-Kansas Dean Miller at JAY HAWK PETROLEUM PRODUCTS the other day. Dean was telling me about that fine Rocket Fuel Oil he sells. It burns hot and clean... that's why people like it so well.

It seems that a lot of people are calling 6788 to take advantage of Dean's free delivery of that top-notch Rocket fuel oil. You see, Dean has a direct connection with the refinery and can sell fuel oil quite a bit lower than other places in town. That's at JAY HAWK PETROLEUM PRODUCTS, 2135 South 6th.

Clipped this the other day: When it comes to paying taxes, you've got to hand it to the income tax boys... if you don't, they will come and get it.

B. K. Teed of MONARCH TIRE SERVICE, INC., 315 South 6th, is taking a little vacation and his partner, Everett (Asia) Miner is taking advantage of his absence by making some wild deals on those fine General tires. January isn't too hot of a month in the tire business, anyhow, so the boys will go along way in making a deal.

Of course MONARCH has a good stock of sawdust tires in most all sizes, and from the looks of the weather, we'll be needing sawdust tires for a long, long time yet. So if you need new tires, sawdust tires or used tires, be sure to see MONARCH TIRE SERVICE, INC., your General Tire Dealer, at 315 South 6th.

Sorry... if you missed MODEL SHOE STORE'S big clearance sale last week, you sure passed up some good bargains. But all is not lost! A gigantic Children's Shoe Sale starts Monday at ARBUCKLE'S MODEL SHOE STORE, 717 Main.

All Buster Brown shoes (look for Tige in there, too) are included. Infants to size 3 Growing Girl shoes were priced to \$8.95 and are now in groups of \$2 and \$4. Prices are also slashed on other children's shoes, sizes 3 to 6.

Here's something of interest to the ladies. I mean little ladies who wear size 4B shoes. MODEL has just received more than 30 styles in this size shoe... from flats to evening sandals. They are all top quality by Life Stride and sell regularly for 12.50, but manager Orville Rehling says he'll let them all go for only 6.50. And if you buy three or more pairs at once, you pay only \$5 per pair. Can you beat that?

Gotta close now and go out and see if I can sell enough ads to feed the kids this week. There's nothing harder to fill up than the tummys of a couple of pre-school kids.

Sincerely,  
Jim