

Radio Log

(ED NOTE: The Herald and News is not responsible for last minute changes in the radio and TV schedules. They are published daily, as a public service and are furnished by the various stations involved.)

KFLW—CBS & A&C, 1450 KC
 Tuesday Evening, Jan. 24

6:00 Today's Sports Highlights
 6:15 Lowell Thomas CBS
 6:30 Andy Music Hall CBS
 6:35 Chevrolet News CBS
 7:00 News CBS
 7:35 Jack Carson Show CBS
 8:00 News CBS
 8:05 Curt Massey Show CBS
 8:30 Preview of Tomorrow
 8:45 Blue Cross Show
 9:00 Sound Mirror
 9:25 Life & Worth Living BC
 10:00 10 P.M. Edition
 10:15 Johnny Dollar CBS
 10:30 Time for relaxation
 11:00 Sign off News Summary
 11:05 Sign Off

Wednesday, Jan. 25

6:00 Minute News Summary
 6:01 America's Favorite Music
 6:15 Minute News Summary
 6:16 America's Favorite Music
 6:30 Minute News Summary
 6:31 America's Favorite Music
 6:45 Minute News Summary
 6:46 America's Favorite Music
 7:00 News — Breakfast Edition
 7:15 Dugan & Mack Show
 7:30 Frank Goss
 7:45 Harry Hobbitt CBS
 8:00 Breakfast Club ABC
 8:00 Blue Skies
 8:15 Better Living
 8:30 Today's News
 8:45 Our Gal Sunday CBS
 9:00 Wendy Warren CBS
 10:15 Ma Perkins CBS
 10:30 Young Dr. Malone CBS
 10:45 Guiding Light CBS
 11:00 Magazine Newstand Theater
 11:10 Music
 11:15 Aunt Mary CBS
 11:30 Nora Drake CBS
 11:45 Aunt Jenny CBS
 12:00 Noon Edition News
 12:15 Payless Sidewalk Show
 12:30 House Party CBS
 1:00 Arthur Godfrey CBS
 2:30 Hank Henry Show
 2:45 Ted Malone ABC
 3:10 Stop 'N' Shop
 3:15 Easy Listening
 3:45 Ted Malone ABC
 4:00 Whispering Streets ABC
 4:15 Basin Briefs
 4:30 Today's Top Tunes
 5:00 Edward R. Murrow CBS
 5:05 Federal News
 5:30 Tom Harmon CBS
 5:45 Frank Goss CBS
 6:00 Today's News
 6:00 Today's Sports Highlights
 6:15 Lowell Thomas CBS
 6:30 Andy Music Hall CBS
 6:35 News DLBS
 6:35 News DLBS

KBES—TV Channel 5
 CBS—NBC, ABC
 Tuesday Evening, Jan. 24

11:50 Devotions
 12:00 Matinee
 1:00 Medford City Police
 1:15 Secret Storm
 1:30 Afternoon Theater
 2:45 Val Rogie
 3:00 Feminine Favorites
 3:30 Western Theater
 4:30 Uncle Bill
 5:00 Pinky Lee
 5:00 Howdy Doody
 6:00 Maple Leaf Music
 6:15 News & Weather
 6:30 News DLBS
 7:00 84,000 Question
 7:30 Motormama Show
 8:00 Silver Stage
 8:30 Celebrity Playhouse
 9:00 Sherace
 9:30 Confidential File
 10:00 Famous Playhouse
 10:30 Best of TV
 12:00 News & Sign Off

Wednesday, Jan. 25

11:50 Devotions
 12:00 Matinee
 1:00 Garden Home & Farm
 1:15 Secret Storm
 1:30 Afternoon Theater
 2:45 Val Rogie
 3:00 Feminine Favorites
 3:30 Medford City Schools Pam
 4:00 TRA
 4:30 Uncle Bill
 5:00 Pinky Lee
 5:00 Howdy Doody
 6:00 Maple Leaf Music
 6:15 News & Weather
 6:30 News DLBS
 7:00 84,000 Question
 7:30 Motormama Show
 8:00 Silver Stage
 8:30 Celebrity Playhouse
 9:00 Sherace
 9:30 Confidential File
 10:00 Famous Playhouse
 10:30 Best of TV
 12:00 News & Sign Off



A VICTIM of train wreck in Los Angeles is removed through a hole in the roof of the overturned car. Firemen used axes to reach the 29 victims. Many passengers in the crowded two-car train were trapped inside when it left the rails on a curve.

History Of Lewis And Clark Expedition To Oregon Told

One hundred and fifty years ago this month, Lewis and Clark were spending their first winter in Oregon. According to records kept by these two young explorers, it was a mild, wet winter.

Merrill Lewis and William Clark camped in January, 1806, near the Oregon coast, living with the 43 men of their party in a split log fort which they had built themselves.

The journals of these men describe the timber of the country through which they had recently passed on their hazardous journey to the Pacific Ocean. Among the trees described is the one we know as the Douglas fir which was named for David Douglas, botanist from Scotland, who visited Oregon 25 years after the Lewis and Clark expedition.

With such an abundance of food at our disposal today, it is difficult to imagine the struggle for subsistence of this party of 45 who were forced to "live off the land" and the sea. Salt was obtained by boiling the water from the ocean

and using the residual crystals as a condiment. Fish, caught in the streams were salted and smoked. They spoiled quickly in the damp weather as did game that the men shot or trapped in the forests.

Records show that elk provided the main food for the group and the elk hides were used for much of their clothing. Game and fish supplemented this primary source of meat.

From the Indians, the men learned to use wapato root, making a meal to serve as cereal and a coarse flour. Indians along the Columbia River used this much as the Klamath Indians used the wocus seed.

With all of their recorded hardships, it is significant that they realized they had discovered a land of plenty with resources that have not been fully developed to this day.

Their exploratory trip, made a century and a half ago, ordered by the long-visioned president of that day, Thomas Jefferson, laid the groundwork for annexing an area to the United States about half as large as the original 13 states.

Foresighted men who followed have set up programs for harvesting the timber on sustained yield plan and for conserving the wild game and fish for generations yet to come.

DOORS OPEN 6:30 P.M.
TOWER
 PHONE 6184
 NOW PLAYING!

MGM presents
QUENTIN DURWARD
 in color and CINEMASCOPE
 Robert TAYLOR
 Kay KENDALL • Robert MORLEY

Featurette
 "White Continent"

DOORS OPEN 6:30 P.M.
PELICAN
 PHONE 4572
 LAST DAY!

ROCK 'N' ROLL REVUE
 Plus
 TOUGHEST MAN ALIVE
 DANE CLARK

Tomorrow!
 THEY'RE IN THE LADIES' ARMY NOW!
Francis JOINS THE WACS

WARNER COLOR
 with CHARLES BICKFORD • Ralph BELLAMY
24 HOUR ALERT

WARNER COLOR
 starring Officers and Men of the U.S. AIR FORCE
JACK WEBB

HESTON • REED
FAR HORIZONS

WARNER COLOR
24 HOUR ALERT
 starring Officers and Men of the U.S. AIR FORCE
JACK WEBB

Hunting Cost Survey Slated

TULELAKE—The nation's first survey to determine the importance of hunting and fishing in the country's economy has been started, and will include the Klamath country, according to Tom Horn, manager of the local wildlife refuges.

The survey, Horn says, is of importance to every conservationist and many business houses throughout the nation and is particularly true of the Klamath Basin where wildlife values are higher than the national average.

The survey is designed to show how much time and money was spent on hunting and fishing activities last year.

Permission for the survey stemmed from the office of Secretary of the Interior Douglas McKay following a request from the International Association of Game, Fish and Conservation Commissioners, representing the fish and game departments in 48 states.

DOORS OPEN 6:30 P.M.
ESQUIRE
 PHONE 4567
 NOW PLAYING!

The Fighting Story of a REAL FIGHTING MAN!
GARY COOPER
 The Court Martial
 Billy Mitchell

WARNER COLOR
 with CHARLES BICKFORD • Ralph BELLAMY
24 HOUR ALERT

WARNER COLOR
 starring Officers and Men of the U.S. AIR FORCE
JACK WEBB

KFJL—MBS & DLBS, 1159 KC
 Tuesday Evening, Jan. 24

6:00 Bob Greene News DLBS
 6:15 Warren Bynum Sports Report
 6:25 Hollywood Highlights
 6:30 Sam Hayes DLBS
 6:35 Harry Wisner DLBS
 6:40 Bob and Ray DLBS
 6:45 Les Paul • Mary Ford DLBS
 6:50 Gabriel Heatter DLBS
 6:55 Bob Inch Show
 7:00 Five Min. Finals DLBS
 11:05 Sign Off

Wednesday, Jan. 25

6:00 First News
 6:05 Sunrise Serenade with Lucas
 6:30 Sons of Pioneers
 6:45 Farm Reporter
 7:00 Hemingway MBS
 7:15 Breakfast Club DLBS
 7:30 Today's Best Buys
 7:45 Bynum News
 8:00 Cliff Swartz DLBS
 8:15 Morning Melodies with Lucas
 8:45 Folger's Morning News
 9:00 Morning Melodies with Lucas
 9:15 Kraft News DLBS
 9:30 Morning Melodies with Lucas
 9:45 Basin Bouquet
 10:00 Newspaper of the Air DLBS
 10:15 Tello Test DLBS
 10:30 A Visit to La Pointes
 10:45 Quicker Quiz
 11:00 Tello Test DLBS
 11:25 Kraft News DLBS
 11:30 Queen For a Day DLBS
 12:00 Time from Town Show
 12:15 Bynum Noon News
 12:30 Heat on Record
 12:45 M. L. J.'s Town and Country Time
 1:00 Coronation Milk Time
 1:15 Bob Crosby Show — DLBS
 1:30 Standand, U.S.A. — DLBS
 2:00 Wayne Loring Show
 2:30 Kraft News DLBS
 2:35 Wayne Loring Show
 3:00 Behind the Store DLBS
 3:45 Tello Test DLBS
 4:00 MCA National Week
 4:05 Keyboard Kapets
 4:15 Hemingway MBS
 4:30 Here's the Answer DLBS
 4:45 Sam Hayes DLBS

Enlistments Open In Army

Information has been received by the local U.S. Army recruiting station that the U.S. Eighth Infantry Division will gyroscope to Europe this coming summer. Enlistments are open on a limited basis for initial assignment to this unit.

Men without prior service may enlist and will be forwarded to Camp Carson, Colorado, for basic training and subsequent assignment to the division which is now located there.

Men enlisting will be assigned job specialties in accordance with aptitude tests administered during their basic training. The various special arms of service are incorporated within the division named Armor, Artillery, Quartermaster, Medical Corps, Signal Corps, Corps of Engineers, etc.

The local recruiting station has been authorized a quota of three vacancies for the month of February. This will afford three local young men an opportunity to enlist together and see Europe during their enlistment period.

Enlistments are accepted on a three year basis, however, if they desire to return from Europe with the division at the end of the gyroscope period they should consider a four year enlistment. Men interested may contact Sgt. M. W. Bues at 621 Main Street or phone 8401.

Toastmistress Club To Meet

The Mt. Mazama Toastmistress Club will meet for a 6:30 p.m. dinner session, at the Willard Hotel January 26.

Ellen Miller will be topic mistress, Mary Lou O'Connor, toastmistress, and Carol Weststone will give the invocation. Jackie Cobo will give the educational feature. Contest speeches will be by Margaret Davis, Sally Urban, Eunice Bunnell, Doris Adams and Edna Howell.

Katy Lake, instructor at OTI, will be guest evaluator.

Speeches are given to prepare for the coming county and regional contests. The winner of the local contest goes to the regional sessions. Winner there competes in the national contest.

JAYWALKER HUNT

MANILA (AP) Police launched "Operation Jaywalker" yesterday and netted 3,000 errant pedestrians, most of whom paid fines of \$2.25 in traffic court. Traffic accidents, which averaged 50 a day last year, fell to 15 for the day.

MEN

IF YOU ARE INTERESTED IN IMPROVING YOUR PRESENT INCOME AND JOB STATUS . . .

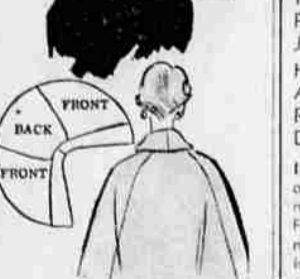
HEED THESE FACTS ABOUT THE TELEVISION-RADIO-ELECTRONICS INDUSTRY:

In one phase of electronics alone, over three million people will be needed in the next five years! Figures now show that more money is being spent on TV servicing than on new receivers themselves!

Check the Help Wanted Ads in the newspaper and note the desperate need for trained technicians.

Act now! Investigate our low-cost practical training program immediately. Nation-wide placement service.

For more information fill in coupon and mail to: TV-Electronics Dept., 16-C, Box 554, c/o Herald & News.



SEW-EASIEST

9266
 14 1/2" - 24 1/2"
 by Marian Martin

Sew-easiest Clutch-cape is the most flattering for a half-size figure! The smart tuxedo front makes you look so tall and slender. The back is a gentle flare. Jiffy to sew—thrifty on fabric. Choose soft pastel woolsens, corduroy, crisp pique.

Pattern 9266: Half Sizes: 14", 16", 18", 20", 22", 24". Size 16", takes 1 1/2 yards 34-inch fabric.

This easy-to-use pattern gives perfect fit. Complete, illustrated Sew Chart shows you every step. Send thirty-five cents in coins for this pattern—add 5 cents for each pattern for 1st-class mailing. Send to Marian Martin, care of Herald and News, Pattern Dept., 202 W. First plain name, address N. Y. Print plain name and address with size, size and style number.

"DENNIS THE MENACE"



"MOTHER, THIS IS DENNIS MITCHELL. I PROMISED HIM SOME COOKIES."

Merrill Women Of Moose Hold Meeting In January

MERRILL—Merrill Chapter, No. 18, Women of the Moose, held a busy session on January 17 with Senior Regent Evelyn Rush in the chair.

During the session, Lucile Graham, sponsored by the Moosehaven committee chairman, Lucy Graham, was accepted for membership. All chapter development committee reports due were read and approved. A report on the card party given for the benefit of flood victims was made.

The Merrill chapter has been invited to put on the opening work for the mid-winter conference to be held in Bend on January 30. Several co-workers from the Merrill chapter plan to attend. The meeting will open at 1:30 p.m. January 29.

Tickets for the March of Dimes ham dinner sponsored by the Merrill Moose Lodge, No. 306 in the Merrill Moose Hall on Saturday, January 28 are now on sale and can be purchased from any member of the lodge. The public is invited. Dancing will follow the dinner to Bunnell's music.

Anna Howard, Mooseheart alumni chairman asked all members to take a pie to the next chapter meeting. Her committee has requested permission to have a pie social following the regular meeting to raise funds for her project.

It was reported that member Myra Ward is ill in the Wallawa Hospital. The regular meeting of the executive board and committee chairman has been changed to 8 p.m. January 25 in the Moose Hall. The social service committee will serve refreshments.

The chapter night program and initiation of candidates is scheduled for the next regular lodge meeting, February 7.

Spotted Alfalfa Aphid To Be Subject Of Alturas Talk

ALTURAS — Two entomologists will speak Thursday at a program at the Veteran's Memorial Hall on the spotted alfalfa aphid, a pale, straw-colored insect pest which has moved through New Mexico and Arizona to California, where it has caused damage to alfalfa fields as far north as Red Bluff.

The speakers are Stewart Lockwood of the California State Department of Agriculture and Ed Swift of the University of California.

The spotted alfalfa aphid, which was discussed at the recent second annual Modoc Pest Control Conference, will probably reach Modoc County soon, according to Loring White and Norman Nichols, who said that it has been spreading rapidly in the Red Bluff area.

Other topics to be discussed at the public meeting, to be held from 10:30 a.m. to 4 p.m. Thursday, include deep rooted weed control, soil sterilization and hydrophobia (rabies).

A new method of controlling deep rooted weeds, such as morning glory, will be discussed by Graham Randall of the California State Department of Agriculture. Ed Greene of Tulelake will demonstrate soil sterilization.

A local panel on hydrophobia will supplement the discussion by Dr. Arthur Hollister of the California State Department of Public Health. Moderator of the panel, which will discuss local aspects of the problem, will be Bruce Christensen. Panel members will be Dr. J. C. Gilbert, Modoc County health officer; Lester Killingsbuck, state trapper; and two local veterinarians, Robert Couling and Mel Horning.

You'll surrender
 to the luxurious flavor of
 This Special Formula bread

A secret blend of 8 selected flours and 8 water-free vegetables, Hollywood Special Formula Bread is a favorite with connoisseurs of fine food. Yet it is so sensible; you see, there are only 46 calories in an 18-gram slice. Begin surrendering—today.

FREE! Hollywood Diet and Caloric Guide. Write Eleanor Day, 100 W. Monroe Street, Chicago 3, Illinois.

Hollywood
 Special Formula BREAD

LEIGH SNOWDEN in "ALL THAT HEAVEN ALLOWS"
 A U-I Picture. Print by Technicolor

OLYMPIA KITCHENS

White and Colors in Steel. A Western Made Product for Western Built Homes.

FOR Builders and Contractors

SEE US NOW

Tele-Pliance Center
 Wholesale Distributors
 11th & Walnut Ph. 7709

Do you work over 14 hours a day? Are you an OVERWORKED YOUNG MOTHER?

Ladies' Home Journal tells what can be done

Are you up to your ears in work every minute of the day? Have you no time to relax? Are you exhausted when your husband gets home? Are you lonesome for talk with other adults. If so, you're not alone!

In spite of labor-saving devices, young mothers today put in as much as 115 hours a week when few workers in business and industry are expected to work more than forty.

Because Journal editors recognize the importance of this problem, they called together four young mothers, whose problems are typical, to meet with experts in child care and family relations and discuss what can be done to help today's overworked young mothers.

In this revealing discussion, you'll read how these young mothers spend their busiest hours, their favorite hours; you'll learn how they shop and keep house. You'll sympathize with them as they tell about their most acute crises, reveal what in their lives they most want to see changed and modified.

You'll read how husbands help around the house . . . what part they play in taking care of the children. But still more help is needed! Where will it come from? What part can your community play?

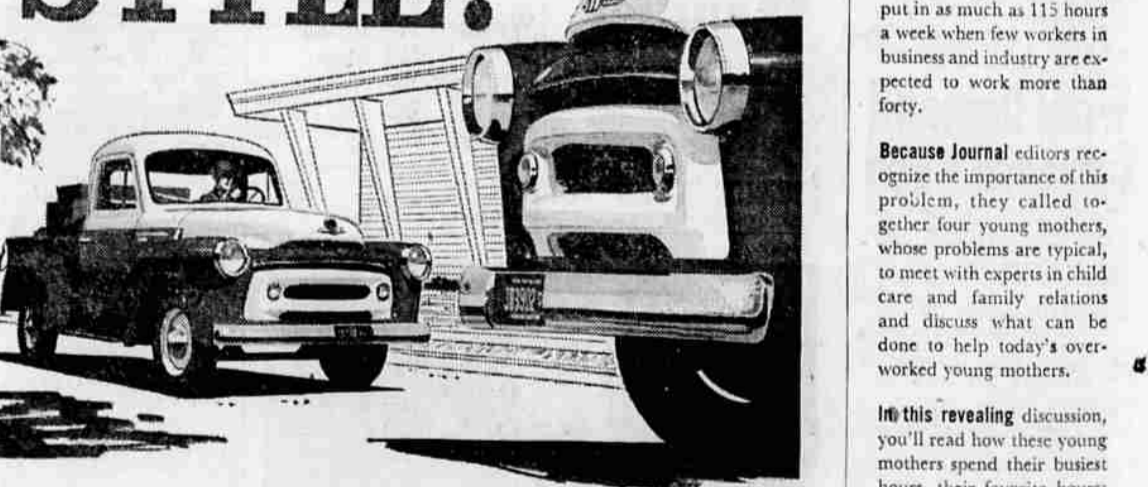
With millions of young marrieds having millions of babies, be sure you read "The Plight of the Young Mother." Show it to your husband, discuss it with your friends.

IN ALL 34 articles, stories and features

Out today—on all newsstands

JOURNAL
 FEBRUARY
 A LITERS MAGAZINE

It's INTERNATIONAL for STYLE!



All-Truck Built to save you the BIG money!

We've got the brand new INTERNATIONALS — smart trucks for you from any point of view!

Here are the new trucks with smart, modern style that's practical, built to take the rough going without excessive costs for repair.

Driver-designed for comfort, too, with features that really let you relax while you work. And you get power that relaxes, usable power at low, economical rpm. Power without strain, less wear, longer life.

And every INTERNATIONAL is all-truck built, with no passenger car design compromises, no passenger car engines or components asked to do a truck job. That means a longer, more dependable life that saves you the BIG money—the over-the-years operating and maintenance money.

Come on in first chance you get, and see the truck built to save you the BIG money on your job.

INTERNATIONAL TRUCKS

Juckeland Truck
 SALES & SERVICE, INC.
 11th and Klamath Ph. 2-2581

Your job is covered in the world's most complete truck line.

We offer the right truck for any job, from 1 1/2-ton pickups to 90,000 lb. off-highway giants.