



50 YEARS OF BUSINESS was reviewed recently by Elbert S. Veatch, seated, left, Robert S. Veatch, standing and Mrs. Jo Babcock. The Veatches are the proprietors of the Klamath County Abstract Co., 422 Main Street, which was incorporated in 1906. Mrs. Babcock has been an employe of the firm since February 14, 1926.

Klamath County Abstract Enters Fiftieth Anniversary

The Klamath County Abstract Co., 422 Main Street, is observing its fiftieth year as an incorporated firm, announced Elbert S. Veatch and Robert E. Veatch, father and son owners of the business.

The firm was originally started in 1906 and was incorporated in 1906 by Don Zumwalt, Bert Withrow (who died in 1923) and E. M.

Bubb. It has specialized in title insurance, abstract and escrow service.

The business was purchased by Elbert S. Veatch on July 1, 1924 and was then located at 111 South Fourth Street. It remained in that location until it was moved to its present location at 422 Main Street in 1953.

In reviewing the growth of the business since 1924, the senior Veatch said: "We were a one man-one woman operation then — now the business has eight employes besides Bob and myself." The oldest employe of the firm is Mrs. Perry (Jo) Babcock who has been a continuous member of the company since February 14, 1926.

Elbert S. Veatch, a native of Cottage Grove, Oregon came to Klamath Falls in 1916 from Grants Pass. He worked in the office of the Algoma Lumber Co. for about 14 months and then joined the First National Bank in Klamath Falls, remaining with the bank until he purchased the abstract business.

Veatch recalled the many changes in Klamath Falls since 1916. "South Sixth Street was an unpaved street lined with livery stables at that time," he said. In order to get to Klamath Falls via train from Grants Pass it was necessary to go to Weed and ride the train up from there. The railroad deadended at Kirk, north of Klamath Falls at that time.

The main wagon road to the Rogue River Valley was down Topsy Grade on the Klamath River to Hornbrook and then over the Siskiyou Mountains to the valley. The Greensprings was completed as a motor road sometime in the 1920s.

Elbert Veatch is a past exalted ruler of BPOELs No. 1247, Klamath Falls, is a former president and district lieutenant governor of Kiwanis. He also served as secretary of this civic club for many years, and is a longtime member of the Klamath County Chamber of Commerce.

Robert E. Veatch joined his father in the business in 1946 following service with the U.S. Air Force as a pilot in the European Theater of operations. He is president of the corporation and is currently serving as a vice president of the Klamath County Chamber of Commerce.

Modern Fencing Styles Add To Beauty, Use Of Patios

Fences are going incognito in most of today's contemporary settings, under the guise of screens for patios, frames for handsome plantings, and continuing architectural lines of the home to improve the looks of the land.

Of course, fences in all their finery still perform such practical functions as marking off property lines, shutting the young fry and four-footed trespassers in or out, and cutting off the street or a bad view. But homeowners are beginning to integrate their fence design with the design of the home, combining beauty and dignity with utilitarianism.

Many homeowners are discovering that whether they prefer a simple dramatic line to their fence or fence section, or a rustic motif to blend with the surroundings of nature, western red cedar or inexpensive grades of Douglas fir adapt to any design.

If your back yard is on a slope, perhaps you will want a step-up fence, or fence sections placed at different levels up the side of the slope. Cedar boards, 1" x 8", nailed in a louvre effect to top and bottom sawtooth stringers, make a

frame for plantings and sculpture, but allow air to circulate freely.

Fence sections can be constructed of 1x4 strips of rough cut cedar or fir nailed to a 2x4 nailed across the top and bottom, attached to posts driven in the ground. These sections may be built as high or as wide as you prefer, and they make a beautiful backdrop for "hanging gardens" — plantings on different levels, boxed up in cedar retaining walls.

Two-by-sixes can be used for the retaining walls, capped with a board of the same dimensions.

A basket-weave fence may be built of low grades of fir very inexpensively, without sacrificing beauty or longevity. There are dozens of designs to be incorporated into fence construction, depending upon your property location and your way of living.

An interior wall of the house may be extended outdoors as a windbreak for a patio, or a split cedar fence with recessed niches for shrubbery makes for privacy without a formidable look.

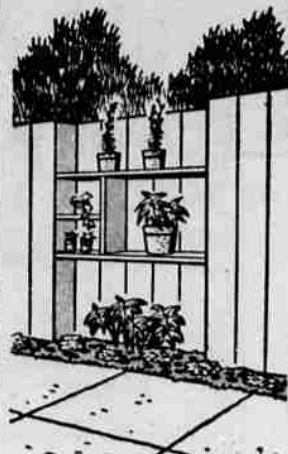
Combed cedar stakes are informal and make a good neutral background for plants. Weathered boards, alternately narrow and wide make a lovely barrier and become more attractive with age. Aluminum and galvanized nails should be used to prevent rust.

These fences may be stained for particular effects, or some are left weathered and alternate with sections finished with loggers oil for smart contrast. Usually these fences are capped with a two-by-four to prevent wood's weathering at the top and to give the installation a finished look.

Garden accessories may tie right in with your wooden fence. Cedar tubs are practical because of their weather resistant qualities, as well as being attractive and easy to build. Size, and shape, which range from low square tubs to hexagonal and rectangular outlines, varies with the particular bush or shrub. Styles may also be varied with your ingenuity. Planters, built right in with the fence line, are also attractive and practical.

If posts, which are to come in contact with the soil, are pressure treated, and inside of planters treated with asphalt paint, the wood will last indefinitely.

Outdoor Whatnot



BLANK SPACES on your fence or patio screen can be broken by a little niche like this set into the fence the depth of a board, making a charming display shelf for potted plants and garden sculpture.

ELEGANT WALL

Many home remodeling fans are discovering a new and different wall surfacing which has elegance and beauty but costs no more than regular wall panelling. It is vertical grain flooring, either fir or west coast hemlock, and because of the tongue-and-groove is easy to install snugly. You can change the appearance of a room by building one two walls with this flooring which can be bought at any retail lumber yard.

BEAUTY

When lumber is manufactured, it is graded for beauty and appearance or for strength and structural qualities. Framing lumber needs to be strong to give a home stiffness, so may have some knots, as in the case of the widely used Douglas fir dimension. But, when lumber is intended to be used for exterior siding and trim and for interior panelling, sash and doors and trim, it must be attractive with lovely texture and grain such as red cedar. Be sure you buy the right grade and kind of lumber for each job; it will save you money.

Room Coloring Change Urged

Every room in the house requires individual attention when it comes to decorating and finishing the walls.

Each room has a different exposure to the sun, it must serve its designated use, and must please the senses of the inhabitants.

For the room with south light, nothing will absorb the sun so beautifully as soft finish, autumn-hued western red cedar paneled walls and builtins. This particular type of natural light enriches the wood and projects the beautiful grain, yet prevents glare frequently found in lighter tones.

The autumn accents provide a banquet of color. Starting with the walls in the rich, subtle golden brown to controlled reddish hues of cedar, accents from autumn can be added with great success in the entire decorating scheme. The red of ivy, yellow of leaves, and blues of ripe fall berries blend and harmonize with the larger color area — the walls.

In selecting a wall color, it is also important that one considers how it will reflect both natural and artificial light. Here again, the near-neutrality of the varying tones of western red cedar when viewed under yellow artificial light only deepen in richness of color and texture, and the white, natural light brings out the real beauty of the wood, creating a comfortable but luxurious interior suitable for any decorating scheme.

For a small room, the cedar walls can be lightened with a rez finish to provide an illusion of distance and spaciousness. This is also suitable for a gloomy and dark area where light and richness are highly desirable.

Test Planting Deadline Set

Greenhouse test planting service for uncertified seed potatoes will not be available after February 1 according to information received at the Klamath County agents' office.

Greenhouse space not needed for test planting of potatoes is being turned over for use by research departments. Growers wishing the test planting service must submit samples before February 1.

Another service for which arrangements must be made before February 1 is the eye index program. In this seed improvement method growers submit stem end index pieces for test planting. When results are received, tubers are discarded before planting here if disease symptoms are found in plants growing from the index price planted in the greenhouse.

Fees for indexing service are \$5 per 100 index prices. Details of procedure may be obtained at the County Agents' office.

Basements Add To Home

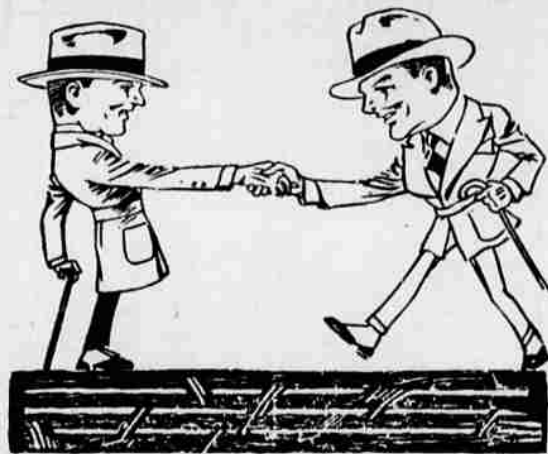
Many millions of families who bought or built basementless homes in the post-World War II economy craze have found out too late they made a mistake, says the Small Homes Guide.

What do you lose by not having a basement? Space, obviously — space that is valuable, useful and at the same time astoundingly inexpensive, the home planning authorities point out. The cost of basement construction can be as low as \$1.50 a square foot of floor space. In other words, an expenditure of 10 to 20 per cent more than the cost of a slab structure can make your home essentially twice as big.

The family gets a resilient wood floor to walk on, dad gets storage room for lawn furniture and tools, even a work bench. The modern basement can be converted into additional living quarters and storage no end.

Basement can be made more elaborate long after home is built, thus spreading cost, and materials like popular fir dimensioned hemlock boards can be purchased at most rental lumber yards.

Some home owners have found out to their dismay they could actually have constructed a full basement — for Heaven's sake, don't mess around with a half basement — for less than the cost of a substitute utility room with its smaller facilities for performing basement functions.



YOU'LL BE GLAD

to get acquainted with the
New Tailor

Charles J. Cizek

First class work and fit Guaranteed.
Domestic and Imported Woolens
Kept in Stock

The above ad appeared in the Evening Herald on December 1, 1917 when Charles J. Cizek opened his first Tailor Shop in Klamath Falls.

His first shop was at 518 Main, where Marvin's is now. For 23 years the shop was located in the Waters Building on South 7th, and five years ago the shop was moved to its present location at 119 South 7th. The principles that Mr. Cizek's first shop were founded on are still good today . . . "Good work. Good fit."

SACRIFICE—
35 cu. ft. Chest Type
Commercial Freezer
Excellent Condition. \$300
Phone 6592



RAISE BETTER BEEF
WITH
SWIFT'S Mineral Blocks
More Mineral for your Money
Pacific Supply Co-op