

KLAMATH UNION HIGH'S Girls' Physical Education classes continue their P.E. work despite the winter snow outside. In the photo at the left Miss Ella Redkey (holding ball) is explaining some of the finer points of volleyball to (left to right) Elsie Vido, co-captain of Junior girls, Sue Derby, co-captain of senior girls, and Katherine Williams, co-captain of freshman girls. Miss Redkey, veteran P.E. instructor, is well-known to the Klamath Basin for her expert swimming instruc-

tion. In the photo to the right Miss Marie "Mickey" Johnson, dean of girls and P.E. instructor, shows the proper volleyball grip to (right to left) Linda Widows, captain of the junior girls, Pat Barron, captain of the senior girls who has a P.E. instructional career in mind, and Karen Riskus, captain of the freshman girls. Klamath Union High's girls have just completed a unit in soccer. —Photo by Dwayne Prather

KU Student Body Awaits Busy Examination Week

By LOIS SHEPPLER
EDITOR

At the termination of each semester at Klamath Union High School, all students are required to take final examinations. These exams begin next Wednesday, January 11.

Examinations are scheduled for one and one-half hour lengths, and will be conducted in the morning and afternoon. An extension of one-half hour will be added to the examination period at the discretion of the teacher.

Regular classes, study halls, and

home rooms will be held through Tuesday, January 10.

Absentees from final examinations will automatically incur failing grades, except in cases of serious illness. Tardy students will not be admitted to examinations. Students completing examinations early must remain in their rooms until the allotted time has elapsed.

No students will be exempted from final examinations.

Buses will operate on regular schedules in the mornings and afternoons. In addition to regular bus service, buses will make a return trip Wednesday, Thursday, and Friday mornings at 11:05 for those students who have no afternoon examinations. Buses will make a second trip to the high school during the noon hour, arriving at approximately 12:45 p.m. This service is for those bus students who do not have a morning exam, but who must report for an examination in the afternoon. Drivers will announce the time of pick up.

A special study hall will be maintained in room 311 for bus students from 10:30 to 11 a.m. and from 2:30 to 3:40 p.m. during the final examination schedule, Wednesday through Friday.

Klamath Union High's cafeteria will operate on a limited schedule, Wednesday through Friday. Sandwiches, milk, and ready-to-serve items will be available to students.

Students are warned that all library fines, cafeteria accounts, and other school dues must be cleared before Monday, January 16. Students are requested to report to home rooms at 8:30 a.m. Monday, January 16.

The final examination schedule for all classes is:

- Period 1, Wednesday, January 11, 8:30 to 10:00 a.m.; period 4, Wednesday, January 11, 1:00 to 2:30 p.m.; period 2, Thursday, January 12, 8:30 to 10:00 a.m.; period 5, Thursday, January 12, 1:00 to 2:30 p.m.; period 3, Friday, January 13, 8:30 to 10:00 a.m.; period 6, Friday, January 13, 1:00 to 2:30 p.m.

'K' Clubbers Eye Arrival Of Machine

By BILL BATES
Reporter

PEANUTS, popcorn, and crack-jacks!

The Klamath Union High student body and faithful followers of the Pelicans are hearing these cries more and more as the basketball season progresses.

These concessions are operated by "K" Club members under the supervision of Mr. Len Surles, adviser. With two members in the booths, four members in the stands, and two additional clean-up members, the concessions have been functioning smoothly. Only one gimmick in the "Operation Concession": K Club members must order their popcorn already popped from Portland, and upon arrival the fluffy stuff is old and cold.

Recently President Orin Perkins addressed the Student Council, and requested a loan from the Student Congress to purchase a new popper. When the needed funds are available, the organization will reimburse the Congress with the proceeds from the concession.

The new popper will produce 110 worth of hot buttered corn in one hour. According to Perkins, the new machine should pay for itself in several months. The tall prexy, currently on the first five of Coach Don Peterson's hoop squad, stated: "Hot popcorn will naturally sell better than cold popcorn, and if we obtain the new popper in time for the final basketball games, we'll really have a good deal."

PAULA COOK, Klamath Union High senior, recalls no memorable moments, but stated, "I have a lot of fun." Paula is advertising manager for Mr. Robert Buelow's El Rodeo publication.

—Photo by Guderian

HARD-HITTING Outfielder Bill Hamblin, KUHS senior, and a member of the singing quartet, "Three Stripes and a Chick," is another familiar face who will be missed after next June's graduation takes its toll. —Photo by Guderian

Hit Parade

By BARBY EDWARDS

This week "Memories are Made of This" suddenly zoomed to number one in the nation, stealing the honor from "Sixteen Tons." Starting with third the remaining top ten are as follows: "It's Almost Tomorrow," "Love is a Many Splendored Thing," "I Hear You Knocking," "He," "Only You," "Love and Marriage," and "Band of Gold."

Editorially SPEAKING

By FRED HEARD
ASSOCIATE EDITOR

Have any of you students been in the pathway of a moving automobile?

If this misfortune has ever befallen you, you realize the precarious predicament you have found yourself.

However, many teen-agers and adults never consider the pedestrian, when they are comfortably seated in an automobile. An automobile is NOT a protector, nor a shield of armor. Statistics prove that you can be killed just as easily inside a car, as you can when walking across a street, or along the road side.

There are no excuses for the great number of teen-age drivers being killed and seriously injured each year. Teen-agers have a quicker reaction time than do

adults, which, of course, means that a teen-ager can stop more quickly.

A good pledge and certainly a timely 1956 New Year resolution should be: "I PLEDGE AND FIRMLY RESOLVE TO ATTEMPT TO CONDUCT MYSELF BOTH AS A DRIVER AND A PEDESTRIAN IN SUCH A MANNER THAT WILL AID IN RAISING PRESENT DRIVING STANDARDS, AND THAT WILL BRING HONOR TO MY FAMILY, SCHOOL, AND COMMUNITY."

'News Beat'

By LINDA GREGORY

Each year students of Klamath Union High School enjoy the Christmas program which is presented on the day before vacation begins. Participating in the program this year were: Paul Adams, Bill Badorek, Ray Behnke, Virgil Bigby, Kent Cooper, Mary Lou Craig, Nancy Clark, Sharon Dewing, Nancy Drews, Lynne Farley, Dorothea Geary, Wella Greene, Terry Hannon, Larry Heaton, Myrna Heaton, Nola Higdon, Vernagene Henzel, Janie Larkin, Stella Lummus, Gloria Mahan, Nancy Meador, Tommy Milne, Alice McKendree, Dale McKenna, Carolyn Nancarrow, Kenny Ostrom, Noama Parker, Wayne Pounds, Douglas Sackett, Pat Smith, Bud Sander, Zeida Scoubes, Gerry Steiner, Sharon Taylor, Diane Taucher, Danny Thomas, Carol Taylor, Wally Wunder and Helen White.

Former students now attending college formed a panel just before the vacation began for the benefit of Klamath Union High seniors that were interested in attending college after graduate. This is an annual event designated for the purpose of preparing graduates for college. Mr. Paul Angstead supervised the panel.

Former KUHS girls currently enrolled at nursing schools who visited the high school during the vacation were Barbara Fitzgerald, Ruth Larson and Faye Marshall.

SOS candy salesmen for the week of December 19-23 were Sandra Spear, Rosemary Welch, Kaye Kelsay, Sharon Zachary, Alice McKendree, Margie Mitchell, Marilyn Nancarrow, Sharon Taylor, Lorraine Pahl and Doris O'Neal.

The following "K" Club members were excused for the holiday luncheon: Bill Badorek, Leon Brown, Billie Burke, Pedro Coleley, Kent Cooper, Tom Ferrrell, Julio Gonzalez, Bob Harsbarger, Larry Heaton, Dan Hitchcock, Mesto Jimenez, Bob Leeling, Dave Leeling, Joe Linman, Duane Long, Jim McGee, Laurie Munro, Dennis Neubert, Gary Price, Gary Roberts, Roy Ropp, Bud Sander, Tarey Scheil, Al Siegner, Bill Steiner, Don Stillwell, Ray Tarwater and Bob Yancey.

Business Law students who were conducted on a field trip to the County Court House to witness a trial under the supervision of Mr. James Dermody before the Christmas holiday began were Paula Cook, Dorothy Dorrrell, Marian Hardman, Ronnie Hodges, Karen Kiser, Bob Locomas, Lorraine Pahl, Opal Smith, Lucille Story, Shirley Thompson, Charlotte Tracy, Gregory Trippett and Barbara Thomason.

Girls League Holiday Play 'Successful'

By SHARON O'NEIL

Klamath Union High School's Girls League held its annual Christmas assembly Tuesday, December 20 in Pelican Court.

The meeting was called to order by President Beverly Overen and then turned over to Julia Ann Britain, who played the role of Grandpa.

The skit consisted of elfs working very hard for Santa to get everything in order before he was to make his trip from the North Pole.

"Three Stripes and a Chick" sang a song entitled "Down by the River Side," and Gail Nerse sang a Christmas song, "Sleigh Ride."

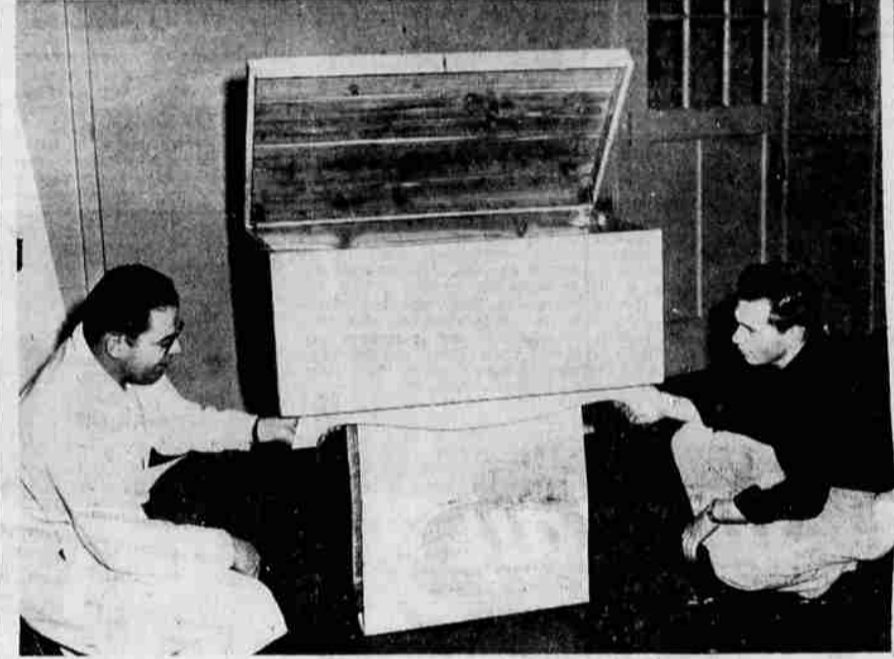
Gerry Steiner did a tap dance, and Myrna Heaton and Sharon Dewing twirled their batons. A merry Christmas dance was sung by Santa's workers.

Members performing in this play were: Matjie Anderson, Jimmie Arnold, Sonya Baxter, Julia Ann Britain, Peggy Brown, Ann Calder, Nancy Clark, Bonnie Crawford, Dorothea Geary, Marilyn Hersey, Nola Higdon, Bonnie Karnes, Janie Larkin, Donnae Mahan, Gloria Mahan, Bunny Jo Midkiff, Shirley Moore, Carolyn Nancarrow, Ronnie Olson, Beverly Overen, Naomi Parker, Royanne Plass, Judy Piser, Gerry Steiner, Pat Smith, Sharon Dewing, Myrna Heaton, Francis Cox, Bill Hamblin, Donn Taucher and Terry Hannon.

Santa presented gifts to Mrs. Druceker, Miss Fish, Mrs. Peak, Sharon Detroit, Sandra Gurrle, Linda Gregory and Wanda Book.

LOIS SHEPPLER
EDITOR-IN-CHIEF
FRED HEARD
ASSOCIATE EDITOR
LINDA GREGORY
NEWS EDITOR
BEV BORAN
FEATURE EDITOR
SANDI BAIRD
ASSISTANT FEATURE EDITOR
KENNY DIXON
SPORTS EDITOR
GLENDA JOHNSON
EXCHANGE EDITOR
GINGER MCKENNA
ART EDITOR
JOANN GEISS
POETRY EDITOR
BARBY EDWARDS
CUB REPORTER
BILL BATES
CUB REPORTER
SHARON JESCHKE
TYPIST
JOYCE HOWARD
RADIO EDITOR
MR. J. D. YOHN
ADVISER

McINTYRE
TRAVEL SERVICE
Your Experienced Agent
WILLARD HOTEL
Phone 3088



SENIOR WOODWORKING STUDENT Jerry Flocchini is shown in the above photograph with Mr. F. N. Scapple placing the finishing touches on his hand-hewn cedar lined chest. This was not a special project and was completed in class with a few tidbits of information from Mr. Scapple, woodworking teacher at Klamath Union High School. The project required approximately nine weeks, and Jerry came into the shop during his study hall to complete it. The chest is constructed of hard maple on the exterior, and Tennessee red cedar on the interior. It will be stained a honey-maple. Jerry has studied woodworking four years, two as a wood-working student, and two as shop foreman. Mr. Scapple commented on Jerry's undertaking, "He is a very apt student in this sort of work, and there is no doubt his future field of work will be related to a mechanical occupation. Jerry's motivation is to give the cedar chest to his girl friend." Mr. Scapple has taught along the mechanical line ten years in subjects including mechanical drawing, woodworking, machine shop, architectural drawing, and auto mechanics. —Photo by Dwayne Prather

'Fashion Plate'

By BARBARA EDWARDS

Don't be too surprised at what you see the typical teen-age girl wearing at Klamath Union High School. She comes dressed up in Johnny's sweat shirt and even artificial pony tails.

But most popular, as usual, are sweaters in every color mentioned and straight skirts. A few varieties are the striped jerseys and long torso over blouses, and as for skirts the "tulip" plants are really blooming. As for shoes, white bucks and flats rate highest. By the way girls, "If you want to stay on the track, be sure and get your pony tail, the line forms to the left."

STUDENT CONDUCT

Students who support, start, or in any way cooperate in unsportsmanlike conduct at athletic events may directly cause all games won to be forfeited to the opposing team.

The first annual joint Hi-Y and Tri-Hi-Y induction for new members and club officers was held at the First Presbyterian Church. Parents were invited.

LYNN ROYCROFT
STANDARD INSURANCE

ANNOUNCES THE REMOVAL OF HIS OFFICE TO

TOWN COUNTRY SHOPPING CENTER
3820 So. 6th Phone 5048

KUHS NUGGET

Exchange List Adds Schools

By GLENDA JOHNSON
Exchange Editor

Popularity of Klamath Union High's two newspaper publications, the Klamath Krater and the News Nugget, is reflected in the growing exchange list of high schools who have joined the Journalism department's exchange roster.

The following high school newspapers, some printed and some mimeographed arrive each week on the News Nugget exchange desk: Astor Post, Astoria; Blue Banner, Crooked County High School, Prineville, Oregon; Boys' Town Times, Boys' Town, Nebraska; "The Breeze," Balboa High School, San Francisco; The Clarion, North Salem High, Salem; The Cactus Chronicle, Tucson; Daily Journal of Commerce, Portland; EHE News, Eugene; Fossil Journal, Fossil; The Flying Eagle, Harrisburg; The Grizzly, Susanville, California; Hill and Echo, Kelso, Washington; Hornets Buzz, Healey.

The High Lines, Seattle; The Highlights, McArthur, California; Knights Herald, Modesto; Lookout, Merrill; The Lion's Roar, Cottage Grove; The McMinnvillian, McMinnville; Medford Hi-Times, Medford; White Buffalo, Madras; The Hi Times, Marshfield; Northwest Communications, University of Washington; OCE Lamren, Monmouth; Nampa Growl, Nampa, Idaho; Barometer, Oregon State College; Orange and Black, Sioux Falls, South Dakota; Parkrose Bud, Parkrose; Panther Scratches, Redmond.

Pine Mur Murs, Bend; Prepster, St. Benedict, Oregon; Pioneer Log, Lewis and Clark College; Pony Tales, Malin; St. Mary's Collegian, St. Mary's College, Spray, Oregon; Scribe News, Oakland, California; The Talkman, Seattle; Trail Blazer, Del Paso Heights, California; Umpqua Chief, Reedsport; Vidette, Lancaster, Pennsylvania; Wireless, Edmonds, Washington; Whirlwind, Albany; and Willamette Collegian, Willamette University.

ACTIVITY SCHEDULE

Clubs, organizations, and classes may raise money through dues, concessions or pay assemblies at Klamath Union High. All of these organizations are given a place on the activity schedule.

WINTER SPORTS
By JOANN GEISS

Skating and skiing
And sledding are fun,
Winter Wonderland
Under Klamath's sun.

LOST AND FOUND

All student articles of value found at Klamath Union High or on the school's campus should be returned to Mrs. Elliott's Attendance Office, where they will be displayed. Owners must identify articles to regain possession.

PROGRESS REPORTS

Klamath Union High mails progress reports to parents and guardians at intervals to inform of unusual academic achievement, or student failures. Teachers include comments concerning the individual student in these reports.

RETAIL SELLING

Members of Klamath Union High's Retail Selling Club are members of the Retail Selling Class which provides an opportunity for the students to receive training by active experience in local business firms.

PELICAN POET

WINTER BEAUTY
By JOANN GEISS

The ice on the boughs
Of the stark, bare trees
Makes tinkling sounds
In the winter breeze.

WINTER WEATHER
By JOANN GEISS

The clouds in the sky
Foretell cold weather,
We'll soon see snow
Soft on the heather.

GINO'S

IS NOW OPEN MONDAY

AMERICAN CHINESE FOODS
BEN B. LEE, Mgr.
Phone 6496 For Orders to Go!

SEE YOUR WAY TO SAFETY...

Good vision is essential to safe driving. Have your eyes examined regularly.

When you're driving, if you don't see right at first glance, you may never have a second chance. Play safe. Let us check your vision.

WILLIAM T. HODSON, O.D.
VISION SPECIALIST... with offices at —

Standard Optical Company

715 Main Street Phone 8322

LAST CALL!

SUBSCRIBE NOW 1955-1956

CIVIC DRAMA FESTIVAL

3 SMASH HIT STAGE PLAYS
DIRECT FROM BROADWAY WITH DISTINGUISHED N. Y. CASTS

Winner of Pulitzer Prize and Critic's Award
WILLIAM INGRES

PICNIC

SOMERSET MAUGHAM'S
The Letter
The Exciting Mystery Melodrama Stage Hit

Hilarious Romantic Comedy
SABRINA FAIR
Original Uncut Stage Play Not The Movie

Plays are sponsored by the Klamath Falls Business and Professional Women's Club. Season tickets \$6 for all three plays. Tickets available from any member of the club or at the door of Mills School auditorium until January 10, date for "The Letter."