



REPRESENTING KLAMATH UNION High's Library personnel as refreshment host in last week's new volume display was June Zumwalt, KUHS library secretary. Members of the high school faculty and administration inspected new books to recommend the purchase of desirable volumes for the library's future orders. The volume display, including fiction and non-fiction works, was organized and supervised by Roy Tidwell, KUHS librarian.

Land Bureau Plans Meeting

A meeting of the local advisory board for the Medford District of the Bureau of Land Management will be held on Friday, November 18, according to District Forester E. K. Peterson.

Scheduled for discussion are (1) the plan prepared by the district for offering O&G and Public Domain timber for sale in calendar year 1956, (2) discussion of possible changes in marketing area boundaries, (3) consideration of the advisability of various possible grazing improvement projects, (4) priority for construction of various possible timber access road projects. Also there will be an election of officers. L. L. Simpson is currently the chairman and B. L. Nutting the vice-chairman.

Two new members have been appointed by the local board by area administrator James Doyle. They are A. C. Smith of Grants Pass, owner of a sawmill located on Wolf Creek, and Ted Wood of Murphy, partner in the Conifer Woods Products Company.

Members of the board reappointed for another year are: from Klamath Falls, O. K. Puckett and Tim Sullivan; from Medford, Eric Allen Jr., George Flanagan, Glen Jackson, B. L. Nutting, L. L. Simpson, Gene Tedrick, and W. B. Tucker; from Grants Pass, F. I. Bristol, Cliff Coleman, Raymond A. Lathrop; and from Glendale, Tom Mehl Jr.



DR. VINCENT BENNETT, D.D.

Church Plans Talk Series

Dr. Vincent Bennett, D.D., Bible teacher, gospel song writer and author, will give a series of speeches at the Mt. Laki Church beginning with one at 8 p.m. Sunday.

Dr. Bennett will speak every night at the church at 7:30 o'clock. On Sunday, November 29, he will be heard at 11 a.m. and 8 p.m.

The churchman is a graduate of Cliff College, England and the McCormick Theological Seminary, Chicago. Dr. Bennett came to the U.S. in 1924 where he first studied at the Moody Bible Institute.

For several years Dr. Bennett was the university pastor and professor of Bible at John Brown University. He later became assistant to the president of Wheaton College, Illinois. He now devotes his entire time to the Bible conference field.

The Mt. Laki Church leaders said that the public is cordially invited to any of Dr. Bennett's lectures.

Motorist Fined After Accident

Glen J. Lamer, 1004 Eldorado, was fined \$25 in municipal court Saturday as the result of an accident Friday morning at Elm and Broad streets.

Autos driven by Lamer and John Charles Miller of Oakland, California, collided at the intersection at about 7:45 a.m.

According to investigating officers, Lamer's auto, westbound on Elm Street, skidded 38 feet on the dry pavement before it met the other auto, which was northbound on Broad. Police said that the other auto, which was pulling away from a stop sign, skidded 12 feet before the impact.

An unidentified passenger in Miller's auto was treated at Klamath Valley Hospital for shock. Both autos were severely damaged and had to be towed from the scene of the accident.

Lamer was cited for violation of the basic speed law. A charge against Miller for failure to yield the right of way was dismissed.

EMIGRANTS
SEOUL is a South Korea will send no families to Paraguay, being Foreign Minister Cho Chung Whan said Saturday.

THE KLAMATH FALLS LIONS CLUB SAYS FOR THE LOVE OF MIKE DON'T MISS SPIKE

SPIKE JONES and his MUSICAL INSANITIES OF 1956
STARRING HELEN GRAYCO and THE CITY SLICKERS and including GEORGE ROCK, FREDDY MORGAN, BILLY BARTY, GIL BERNAL, PETER JAMES, "Mousie" GARNER, BILL KING, RUTH FOSTER

PELICAN THEATRE
FRI. NOV. 18
2-PERFORMANCES-2 5:45 and 8:30
Tickets Now On Sale At Derby's Music Co. MAIL ORDERS ACCEPTED

5:45 PERFORMANCE NO SEATS RESERVED Students Includes OTI 1.00 Adults \$1.50 Prices Include Tax
8:30 PERFORMANCE Main Floor Reserved \$2.00 Loges Reserved \$3.00 Balcony-Not Reserved \$1.50 All Prices Include Tax

Art Events Calendar

Klamath Camera Club meets every Tuesday night at the County Library, 8 p.m. Programs are: November 15, "White Water Trip," slides by Marjorie Paul of San Juan and Colorado River Boat Trip, November 22, "Filter Facts and Fun," colored slide and recorded lecture sponsored by Bud and Charlotte News & Photo Service.

Great Books Club meets at 8 p.m., City Library, November 17, Plato's Meno, December 8, Aristotle's Ethics.

Afternoon Book Club of AAUW will meet at Mrs. Laurence Shaw's, 805 Pacific Terrace, Tuesday, December 13. Mrs. John Moehl reviewing.

Interior Decorating Group of AAUW meets Monday, November 28, 8 p.m. at Mrs. Melvin Miller's, 1222 Eldorado Blvd. Subject: Christmas decorating.

Drama Group of AAUW will meet at Mrs. Aaron Hoffman's, 1021 Newcastle, Monday, November 21, 7:30 p.m. Mrs. Hoffman will give a reading of an original story, Eva Burkhalter assistant hostess.

A and I Folk Dancing Club meets every Monday, 8 p.m. at the Altamont Elementary School. Klamath Art Association Tea and Exhibit, Sunday, November 29 in the conference room of the County Library. Exhibit by Members and preview of Christmas decorations and ornaments.

KUHS drama students will present "Vampira" for the Library Club, Monday, November 14, 2 p.m. at the Little Theater in KUHS. Mrs. B. B. Blomquist, director.

Music Festival Pelican Court, Saturday, December 3, 8 p.m. Mr. W. H. Hannah will direct the S. E. Oregon and Northern California honor band and chorus. The KUHS orchestra, directed by Don McKenzie, will be guest performer.

Historical Society will meet at the county library, Wednesday, December 7, 8 p.m., all people interested in history invited.

Barbershop Chorus meets every Monday night at the Winema Hotel. Next performance is at Look-out, Saturday, November 26.

Klamath Falls Garden Club Tea on Wednesday, November 16, 2-5 p.m. at Mrs. A. J. Dorlaine, 1955 Lawrence. On Monday, December 19, a Christmas workshop at the City Library. Instructors: Mrs. Hugh O'Connor and Mrs. Will W. Wood.



VISITORS WHO ATTENDED the Klamath County Open House last week in Klamath Union. High's Pelican Court were many, and two of these were Mr. and Mrs. Max Marvin. Mr. Marvin is principal at Altamont Elementary School. Both are inspecting a Central America exhibit, one of many contributed by the 24 Klamath County Schools participating in American Education Week, whose theme this year was "Schools—Your Investment in America."

U.S. Big Business Places Bets On Future

NEW YORK (AP) — Have any doubts about the boom lasting at least another year? Then take a look at what the big fellows in U.S. industry are planning.

Two of the nation's industrial giants this week placed billion-dollar bets on the country's economic future. A survey showed that U.S. business as a whole is staking record sums on bigger sales and bigger markets next year.

This all comes under the heading of spending for "expansion" — spending by corporations for new mines, oil wells, chemical plants, factories, trucks, tankers, freight cars, jet airliners, office buildings, shopping centers and the like to handle an expected increase in business.

The sums to be invested stagger the imagination. For example, Standard Oil Co. (New Jersey) announced that in 1956 alone it will sink a record \$1,200,000,000 into enlarged facilities for discovering, producing, refining and marketing

oil. That's 20 per cent more than in 1955. Behind this decision, the company said, is "our confidence in the economic outlook."

Chrysler Corp., preparing for "the tremendous markets that are going to open up in the years ahead," unwrapped a billion-dollar program of expansion that will be stretched out over the first five years. The lion's share is earmarked for "automated" equipment.

For a broader view of the business expansion picture, here's what a McGraw-Hill survey turned up:

U.S. industry will lay more than \$3 1/2 billions on the line next year for new plants and new equipment. That's a 13 per cent gain over 1955 and the largest peacetime hike in history. Auto companies, led by General Motors, Ford and Chrysler, will spend \$1,924,000,000 — a whopping 68 per cent increase over 1955. The railroads will up

their spending by 30 per cent and the iron and steel companies by 72 per cent.

School Burglary Under Scrutiny

WEED — The Weed Police Department has announced that investigation is continuing of the burglaries of the Weed Elementary School and the Rex Club last month.

Entrance into the school was gained by prying out a window in one classroom and then into the principal's office by way of the door transom. The safe in the office was also pried open and approximately \$30 in cash was taken.

Approximately \$150 in bills and silver was taken from the Rex Club and entrance there was gained through a window on the Inez Street side of the building.

HOME EXTENSION

KENO
By Mrs. Lane Smith

Joan's Kitchen was the meeting place for the Keno Home Extension Unit, Wednesday, November 9 at 10:30 a.m. Mrs. Marion Padgett, chairman, opened the meeting and turned it over to Hope Holbrook who showed as an eye opener, "Gifts made from Cloth," including stuffed animals and aprons. Mrs. Leonard Ramsey won the special prize. Mrs. Elmer Eriel read the thought for the day. Mrs. Charles Sandusky read the minutes and Mrs. Doug Puckett gave the treasurer's report.

Mrs. Larry Owen and Mrs. M. E. Anderson reported their newly organized 4-H groups were doing nicely. Red Cross first aid courses are being offered again and the group discussed the possibility of having a class in Keno.

Two dollars and fifty cents was donated to the community lounge and \$2.50 toward the gift for Joan's Kitchen. Mrs. Doug Puckett was appointed chairman of the committee to purchase special Christmas gifts. Mrs. Veryl Young announced blood is still badly needed by the Red Cross and asked for donors in December.

A potluck lunch was enjoyed with the Lindley Heights unit. The project "Picture Selection and Framing" was presented by Hope Holbrook.

Twenty members were present, and three new members were welcomed. Mrs. Billie Hall, Mrs. Richard Jameson, and Hope Holbrook were guests of the day.

KLAMATH COUNTY HOME EXTENSION ADVISORY COMMITTEE

The Klamath County Home Extension Advisory Committee met at Joan's Kitchen Monday November 7 at 11:30 a.m. for a potluck luncheon with Mary McConnell as guest.

The meeting was opened by Mrs. Frank Peyton, vice chairman, and the preliminary business completed. Mrs. W. B. Bickers reported that in October she had installed the officers for the newly organized unit at Crescent.

The chairman or representative from 17 units arrived at 1:30 p.m. and the meeting was reopened by Mrs. H. Y. Horton, chairman. Questions concerning all the units were discussed and voted upon. Main topics were: "Unit Goals; should we work toward standard unit goals or discontinue them."

Installation: should unit continue mass installation at festival or have individual unit installation.

Officers training days: should it be held in the spring or fall. There was also discussion on childcare, homemakers' camp fund, Joan's Kitchen gift and the festival luncheon.

Coffee and cookies were served by county committee members.

BLY

By Mrs. Ted Hyde

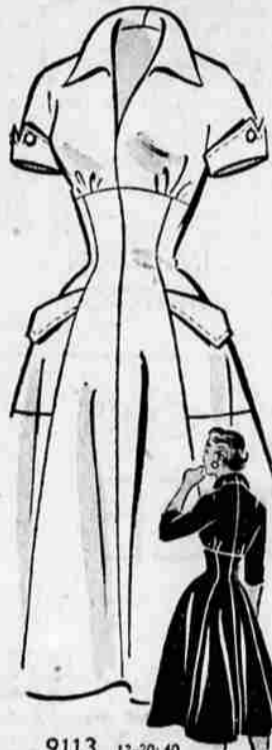
An interesting meeting on "Making Cakes Attractive" was held November 1 at the home of Mrs. Monte Cline. It was the third meeting of the year for the Bly Home Extension Unit, and there were 13 members and three guests present. Leading the demonstration were Mrs. Bill Hatzi and Mrs. Dave Campbell. After showing some techniques for frosting and decorating cakes, cupcakes and petit fours, they assisted the members in trying out the various decorating tips. The technique of making roses was the most popular and difficult attempted by the group.

After a potluck lunch, Mrs. Joe Potucek of Langell Valley gave a special demonstration on cake decorating, showing what a home-maker might hope to do with experience and practice. She showed how to make the border, which should be put on first; flowers, including roses and sweetpeas with their stems and leaves; writing and outlining a pattern.

During the business meeting there were discussions of various county policies and the unit approved a motion favoring a county-wide assessment of members for County Committee expenses. A new member, Mrs. Jerry Dillavou, was welcomed at this meeting.

The next meeting will be December 8 at the home of Mrs. Bill Hatzi and will be on "Picture Framing and Selection" with County Agent Hope Holbrook in charge. Any women in the community who are interested are welcome to attend.

FASHION WINNER!



9113 12-20-40 by Marian Martin

Here's the winning combination for winter fashions—the empire princess dress, of course! See its smooth flowing lines—gently fitted at the raised bodice and waist, whirling in the graceful bouffant skirt. Wonderfully easy to sew—so-o-o flattering to wear!

Pattern 9113: Misses' Sizes 12, 14, 16, 18, 20; 40. Size 16 takes 3 1/2 yards 39-inch fabric.

This easy-to-use pattern gives perfect fit. Complete, illustrated Sew Chart shows you every step.

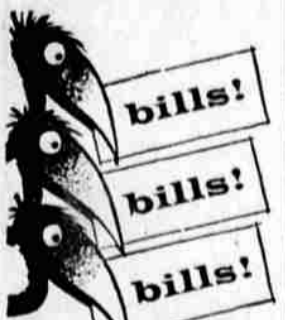
Send thirty-five cents in coins for this pattern—add 5 cents for each pattern for 1st-class mailing. Send to Marian Martin, care of Herald and News, Pattern Dept., 232 West 18th St., New York 11, N.Y. Print plainly name, address with zone, size and style number.

PROSECUTION

KIEL, Germany (AP) — The Kiel district attorney started prosecution Saturday against former SS doctor Maj. Gen. Carl Clauberg, accused of sterilizing scores of Jewish women inmates in the Auschwitz Nazi concentration camp.



MARGARET OGLE will play the lead in the farce "Vampira," to be presented Monday, November 14 for the members of the Klamath Falls Library Club. The club will meet at the usual time, 2 p.m. in the Little Theater at Klamath Union High School. The play is being directed by Mrs. B. B. Blomquist.



Consolidate all your bills into a popular **PF ALL-IN-ONE LOAN**. Make one payment, one place. Take up to 24 months to pay!

PACIFIC INDUSTRIAL A DIVISION OF PACIFIC TRUST

L. A. Woodward, Mgr. Phone 8128 121 So. 9th St.



Cavalier gives you

CLEAN HEAT from CLEAN HEATERS

You clean Wall Insert and Surface Mounted Cavaliers this way—

IN 3 MINUTES OR LESS

TWO INCHES LOWER MAKES THEM EASIER TO INSTALL UNDER WINDOWS

ALL MODELS AVAILABLE AT

B & B Radio & Electric

316 So. 6th Ph. 6920

9th & Pine Phone 3188

Montgomery Ward

SPECIAL BUYS!
Save over 50%!

YOUR CHOICE

388

A) Beautiful, big bent glass fixture with brass trim, 3-light.
B) Round floral design . . . 14-in. diameter, 3-light holder. Save now.
C) Attractive hall light with brass frame and holder, 1-light.

BUY NOW!
Limited Quantities

YOUR CHOICE

766

D) Lovely drop fixture with rustic polished copper shade, 1-light.
E) Big bent glass beauty with crystal stem, brass trim, 4-light.
F) Striking sunburst design on extra large (19") shade, 4-light.

Better lighting for modern homes.

OPEN FRIDAY NIGHT 'TIL 9 P.M.