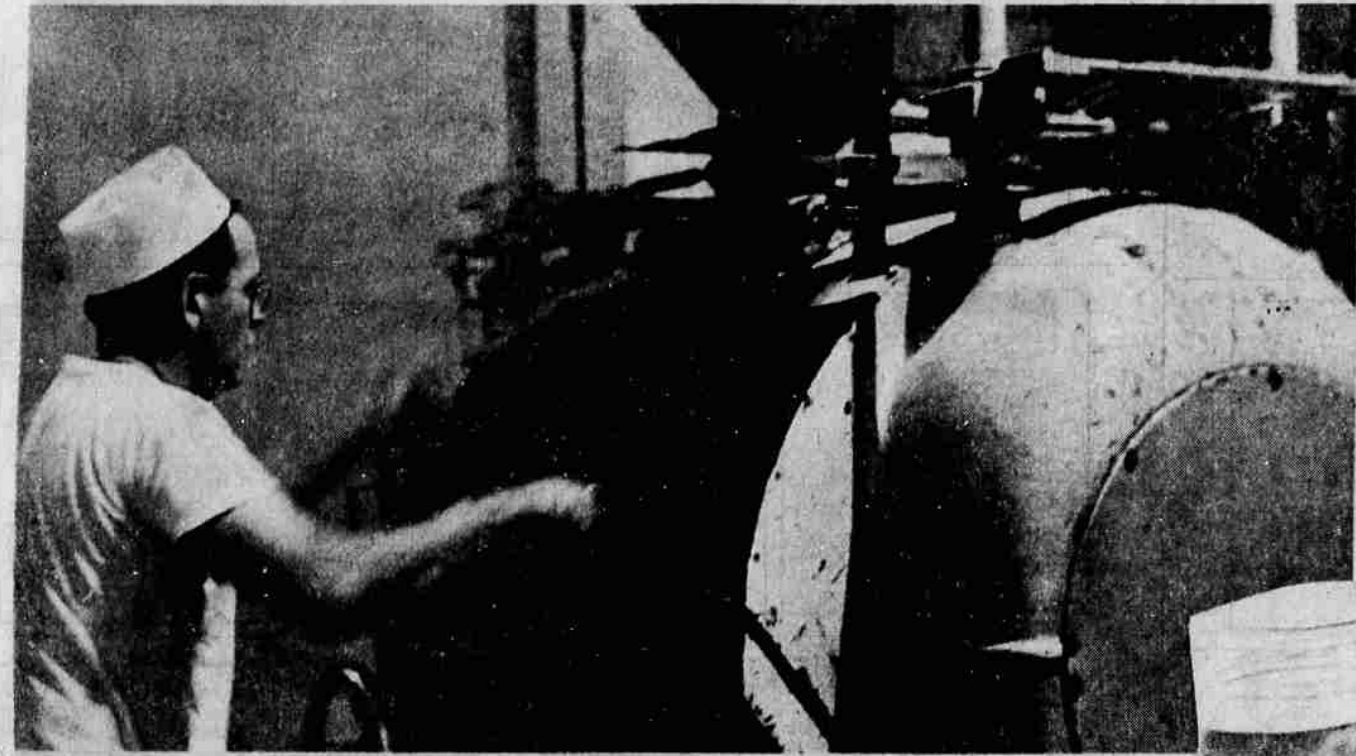
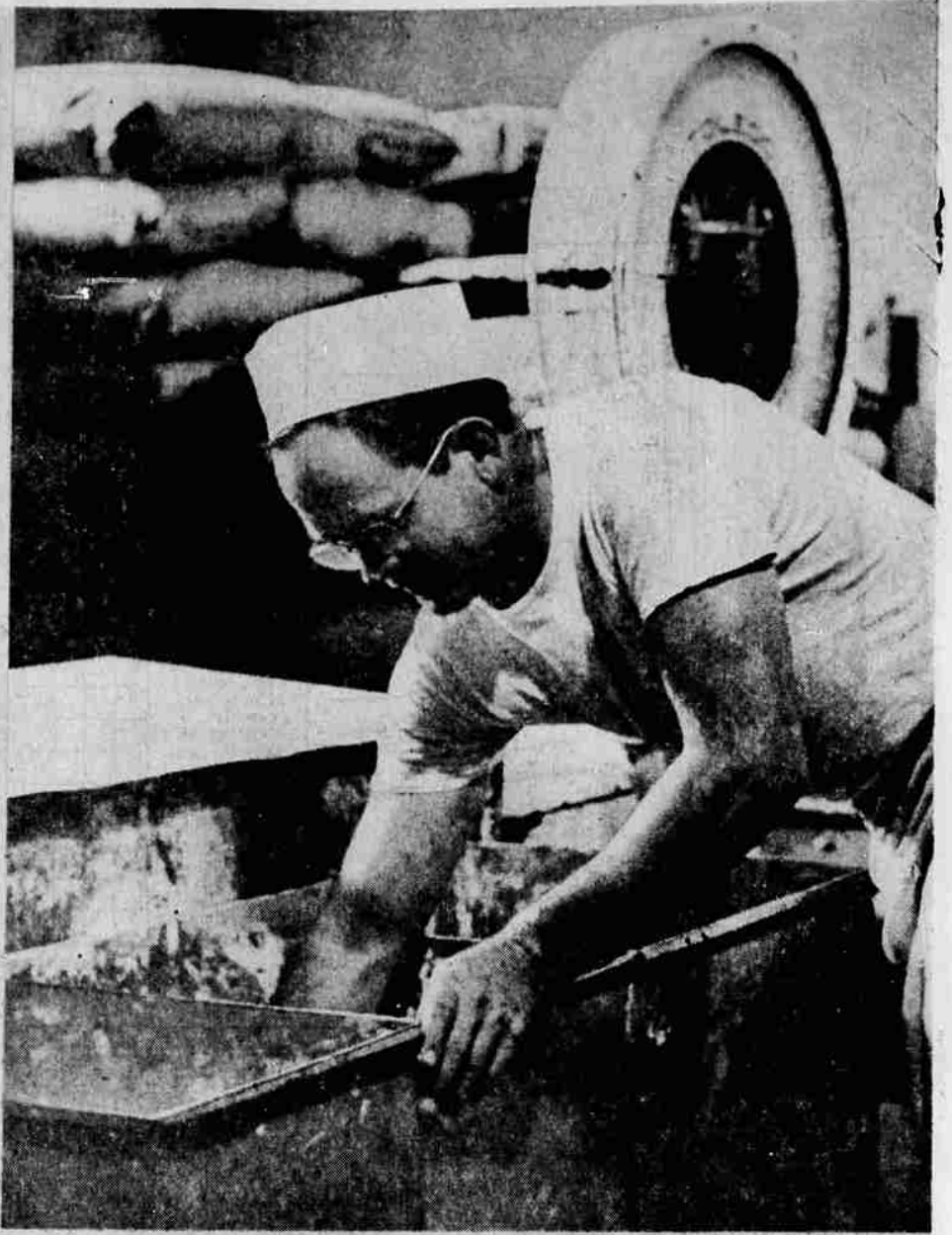


Fluhrer's Bakery Co. Observes 20th Anniversary In Klamath Falls

FLUHRER'S 20th ANNIVERSARY of operation in Klamath Falls is being observed by the firm this month. The baking firm, which has operated a plant in Medford for about 30 years, bakes numerous bakery items in its Klamath Falls plant at 419 Broad Street. The Klamath Falls plant bakes special items such as rolls, doughnuts, etc., which are distributed over Southern Oregon and Northern California. The Medford plant specializes mostly in bread, which is also trucked to all the cities of this area. The Fluhrer's Klamath Falls plant employs about 40 employees and had a payroll of approximately \$200,000 in 1954. The firm was founded in Medford by John A. Fluhrer, deceased, and was headed by his son William H. (Heinie) Fluhrer until his death several years ago in an airplane crash at Lake of the Woods. Fred Hoagland, Klamath

Falls, was the manager of the Klamath Falls branch for many years prior to his retirement a few years ago. Ralph Hunter is the present manager of the Klamath plant. At top upper right Johnnie Peterson is weighing a dough mix formula. Peterson is operating the dough mixing machine at upper right. Production Superintendent George Yahraus, left, and Paul Igou watch a bun-making machine in the middle left picture. At middle right Steve Brumble, center, Glen Scott, shop foreman, right, and John Drake, left, are putting the buns in the baking pans prior to baking. Lower left, George Yahraus pushes racks of buns into the proof room. The buns are then taken from the proof room to the large baking ovens. At lower right Manager Ralph Hunter watches Marion Freeman operating the doughnut packing machine.



PHOTOS BY DON KETTLER