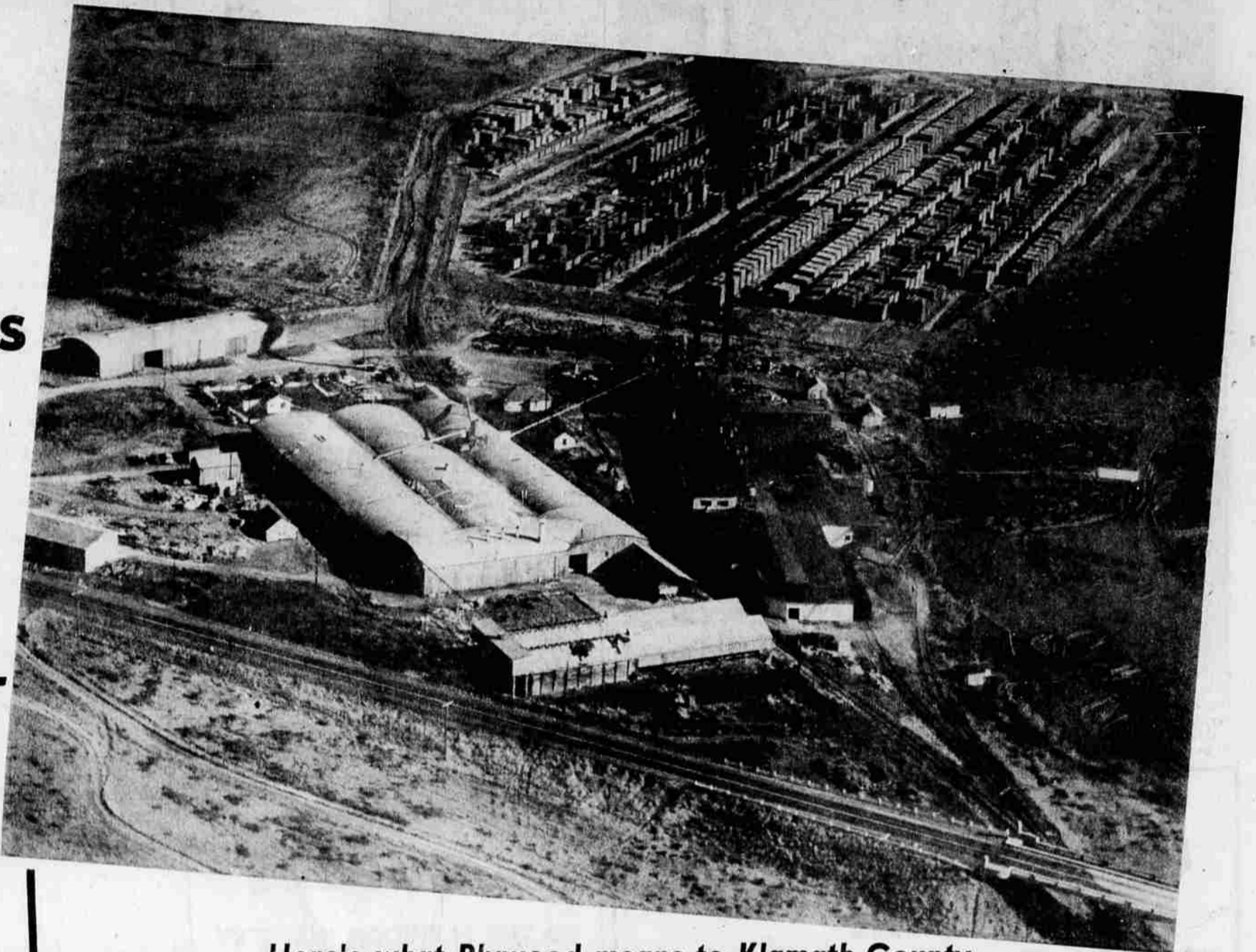


KALPINE PLYWOOD...

**Invites You
To See
Your Own
Klamath Falls
Plywood
Industry
In Action!**



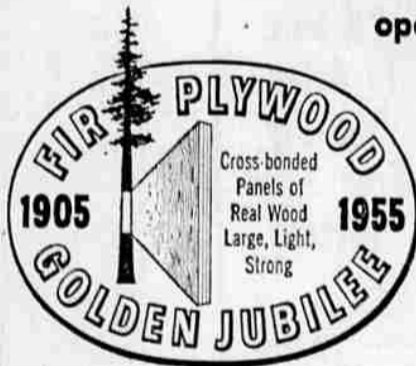
**OPEN
HOUSE
TUESDAY
October 25
1:30 TO 4:00 P.M.**

On this occasion, the 50th anniversary of the Plywood Industry, we cordially invite each of you to tour our plant and actually see Plywood being produced! Starting with the log, you will be able to follow the wood through the successive steps until it emerges smooth and trim, ready for shipment.

FREE COFFEE & DO-NUTS
Served During Our Open House

Here's what Plywood means to Klamath County ...

- ★ 48,000,000 square feet produced annually!
- ★ Company employment - 240 men and women!
- ★ Annual payroll more than \$1,320,000!
- ★ More than \$100,000 local purchases per year!
- ★ Just installed 3 new steam vats, permitting year 'round operation regardless of weather!



The Entire Family Will Enjoy The PLYWOOD JUBILEE

Be sure to attend the Fir Plywood Jubilee free show at the Klamath County Fairgrounds Tuesday, October 25. It's a circus-type exposition and will have something of interest for every member of your family. See sound-color movies. See the clever "men-

gerie" of circus animals made entirely of plywood. See "Golden Ideas" for outdoor-indoor living. See dramatic displays depicting fir plywoods importance to the Klamath Basin!

HOURS 2 P.M. to 9 P.M.

ADMISSION FREE!

This year the great plywood industry is 50 years old. Plywood represents an important forward step in our forest products industry. It has created new jobs and new payrolls along with a great variety of

appealing and usable products which find wide distribution. The future of fire plywood holds rich promise of even greater growth.

HOW TO GET TO KALPINE

Kalpine is located on Highway 97, 1 mile South of the Weed-Ashland Jct. Turn left at the big sign just before crossing the Klamath River Bridge and follow the markers to the Kalpine Office.

KALPINE PLYWOOD CO.

DIVISION OF PLYWOOD, INC.