

# Radio Log

**KFLW-CBS & AdC, 1450 KC**  
 Tuesday Evening, Oct. 18  
 6:00 Today's Sports Highlights  
 6:15 Lowell Thomas CBS  
 6:30 Amos 'N' Andy Music Hall CBS  
 6:55 Chevrolet News CBS  
 7:00 Suspense CBS  
 7:25 Jack Carson Show CBS  
 8:00 News CBS  
 8:30 Tennessee Ernie CBS  
 8:50 Preview of Tomorrow  
 9:30 Bing Crosby CBS  
 9:50 Lee Zimmerman Show ABC  
 10:30 Life in Worth Living BC  
 10:50 Johnny Dollar CBS  
 11:00 Time for Relaxation  
 11:05 Sign Off News Summary  
 11:05 Sign Off

**Wednesday, Oct. 19**  
 6:00 Minute News Summary  
 6:01 America's Favorite Music  
 6:15 Minute News Summary  
 6:30 America's Favorite Music  
 6:35 Minute News Summary  
 6:51 America's Favorite Music  
 6:55 Minute News Summary  
 7:00 America's Favorite Music  
 7:05 News Breakfast Edition  
 7:15 Dugan & Meek Show  
 7:30 Frank Goss  
 7:45 Harry Belafonte CBS  
 8:00 Breakfast Club ABC  
 8:30 Blue Skies  
 8:45 Better Living  
 9:30 Helen Trent CBS  
 9:45 Our Gal Sunday CBS  
 10:00 Wendy Waters CBS  
 10:15 Ma Perkins CBS  
 10:30 Young Dr. Malone CBS  
 10:45 Guiding Light CBS  
 11:00 Magazine Newstand Theater  
 11:10 Music  
 11:15 Betty Mason CBS  
 11:20 Star Dishes CBS  
 11:45 Avon Mary CBS  
 12:00 Noon Edition News  
 12:15 Payless Sitcom Show  
 12:30 House Party CBS  
 1:00 Arthur Godfrey CBS  
 2:30 Hank Hartsell CBS  
 3:00 Second Mrs. Burton CBS



**THE CONTINENTAL MARK II**, the Ford Motor Company's new luxury automobile will be on display Thursday evening at Basin Motors, 424 South Sixth Street. The new model is a prestige automobile manufactured in low volume with special attention to quality, styling and detail. It retains in modern form many styling characteristics of the former Lincoln-Continental. The fashionable Continental spare tire is mounted beneath a unique moulding stamped in the rear deck lid. The "modern formal" design emphasizes the functional use of chrome, steel and glass areas. The hood is almost six feet long, and the car is more than 18 feet long. It is four inches less than five feet high, it is believed to be the lowest production car with both a front and rear seat. A new frame design and 77 1/2 inch width of the car insure ample room for all occupants.

## Klamath Vets Named Hunt Successors

Three Klamath Falls veterinarians were named by the city council Monday night to take over the duties of the late Dr. John C. Hunt, city dairy and meat inspector. Dr. Hunt died last week.

The veterinarians are Dr. Harry Leonard and Dr. M. C. McFadden, who will act as meat inspectors, and Dr. Fred Wedam, who will serve as dairy inspector.

Dr. Hunt was a full time employee of the city. His successors were engaged on a contract basis. Dr. Hunt's salary will cover the three new inspectors' fees. They will work on a part-time basis.

The council passed a resolution leasing to the Navy the west half of the naval reserve building at the municipal airport for office and storage facilities during the jet interceptor base construction period. The Navy is now occupying quarters of the Bureau of Reclamation.

Another resolution was passed providing for a lease between the city and the federal government on the structure at the airport known as the old administration building. It was formerly used by the national guard. Under the new agreement the building will house a naval electronic warfare unit.

An ordinance was introduced at the council meeting authorizing the city to sign a lease with Stinson's Flying Service for rental of the north half of the steel hangar at the airport for \$175 a month for a period of three years.

Another ordinance was introduced providing for the leasing for the south half of the same hangar to Liston's Flying Service for \$25 a month for a three-year period.

After the council heard recommendations by Fire Chief Roy Rowe and City Building Inspector Vern Schortgen that abandoned houses in the 1600 block on East Main Street be condemned, the owner of the structures, E. D. Polts, agreed to wreck them.

The two city officials said the buildings were dilapidated and unsanitary. It also was reported that hoboes were staging "canned heat parties" in the houses.

### SCREWDRIVER



It leaves you breathless

**Smirnoff**  
 the greatest name in VODKA

80proof. Made from 100% grain neutral spirits. See Pierre Smirnoff Fla. Inc., Hartford, Conn.

## P-I Open Class Judging Begins

PORTLAND 18 — Open class judging highlighted Tuesday's program at the Pacific International Livestock Exposition after Washington entrants took most of the prizes in the 4-H Club competition. Monday's major event.

Bill Hellwell, Spokane, showed the Shorthorn steer champion and David Miller, Pomeroy, the reserve champion.

Bobby Schenely, Ellensburg, won the market hog championship and Norman Schaad, Prosser, was named top 4-H swine showman.

Fritz Hill of Helix, Ore., had the 4-H fat beef champion for the second year in a row. Billy Boldman, Lind, Wash., was runnerup with an Angus.

A Washington State College Southdown won the fat lamb championship in the open show.

In the open Hampshire sheep division, A. W. Bagley, Salem, scored a grand slam by showing both champions and winning the American Hampshire Assn. president's cup for the second consecutive year with the best pen of ram lambs.

Ira Riddell, Monmouth, Ore., had the champion fat lamb and top pen of Southdowns in the FFA fat lamb show.

California Polytechnic won the intercollegiate dairy animal judging contest. Then came Utah State, Washington State, and an all-girl team from Fresno State, Ed Veenhuizen, Washington State, was high individual scorer.

The exposition will continue through Sunday.

## ICC Approves Freight Rates

WASHINGTON 18 — The Interstate Commerce Commission Tuesday authorized an indefinite continuation of the billion-dollar-a-year freight rate increases which it granted the railroads in 1952.

The increases, ranging from 12 to 15 per cent over pre-1952 levels, were scheduled to expire at the end of this year. However, the ICC cancelled the Dec. 31 expiration date and thus in effect retained the higher rates on a permanent basis, as requested by the railroad industry.

The ICC also directed that the one-time temporary hikes should no longer be treated as a surcharge on freight billings. The higher rates are thus incorporated into the established rate structure.

At recent hearings, the railroad industry contended that many lines would be thrown into financial difficulty if the rates dropped back to the 1952 levels.

The National Coal Assn. and some other shipping interests, fought to preserve the expiration date and the coal industry specifically asked for immediate cancellation of the 1952 increases on coal.

This petition was denied Tuesday by the ICC.

The actions were taken by nine of the 11-member commission, with no dissent noted. Commissioners J. Hayden Aldredge and Kenneth H. Tuzigle did not participate in the vote.

The ICC's brief order said a formal opinion will be issued later. The 1952 hikes were 15 per cent generally, except for grains, coal, sand, gravel, stone and iron ore, on which 12 per cent advances were allowed.

## Motorist Clobbers Main Stop Sign

An automobile driven by Clarence Allen Casabier, 2523 Darrow, this morning rammed a traffic light at the intersection of Main and East Main streets and knocked it from its concrete standard on a traffic island. Klamath Falls police reported today.

According to investigating officers, Casabier was injured slightly, and was treated and released at Klamath Valley Hospital.

Officers Warren Beece and Rex King, who made the investigation, said that Casabier told them he was heading north on East Main when the right front wheel of his auto locked, throwing the car against the signal pole after it skidded on the wet street.

Casabier is scheduled to appear at municipal court this afternoon on a charge of violation of the basic speed rule.

## Heavy Rains Assure Power

PORTLAND 18 — Heavy rains in Canada and the Columbia River Basin this month have eliminated the threat of cuts in interruptible power, the Bonneville Power Administration reported Monday.

A week ago after heavy rains it was hinted this might be so.

John F. Jolliffe, BPA power operations chief, said the power outlook is good for the rest of the year.

Addition of a fourth 64,000-kilowatt generator at Chief Joseph Dam in early November will further improve the region's power supply, he said.

## Motorist Clobbers Main Stop Sign

An automobile driven by Clarence Allen Casabier, 2523 Darrow, this morning rammed a traffic light at the intersection of Main and East Main streets and knocked it from its concrete standard on a traffic island. Klamath Falls police reported today.

According to investigating officers, Casabier was injured slightly, and was treated and released at Klamath Valley Hospital.

Officers Warren Beece and Rex King, who made the investigation, said that Casabier told them he was heading north on East Main when the right front wheel of his auto locked, throwing the car against the signal pole after it skidded on the wet street.

Casabier is scheduled to appear at municipal court this afternoon on a charge of violation of the basic speed rule.

## Motorist Clobbers Main Stop Sign

An automobile driven by Clarence Allen Casabier, 2523 Darrow, this morning rammed a traffic light at the intersection of Main and East Main streets and knocked it from its concrete standard on a traffic island. Klamath Falls police reported today.

According to investigating officers, Casabier was injured slightly, and was treated and released at Klamath Valley Hospital.

Officers Warren Beece and Rex King, who made the investigation, said that Casabier told them he was heading north on East Main when the right front wheel of his auto locked, throwing the car against the signal pole after it skidded on the wet street.

Casabier is scheduled to appear at municipal court this afternoon on a charge of violation of the basic speed rule.

## Motorist Clobbers Main Stop Sign

An automobile driven by Clarence Allen Casabier, 2523 Darrow, this morning rammed a traffic light at the intersection of Main and East Main streets and knocked it from its concrete standard on a traffic island. Klamath Falls police reported today.

According to investigating officers, Casabier was injured slightly, and was treated and released at Klamath Valley Hospital.

Officers Warren Beece and Rex King, who made the investigation, said that Casabier told them he was heading north on East Main when the right front wheel of his auto locked, throwing the car against the signal pole after it skidded on the wet street.

Casabier is scheduled to appear at municipal court this afternoon on a charge of violation of the basic speed rule.

## Motorist Clobbers Main Stop Sign

An automobile driven by Clarence Allen Casabier, 2523 Darrow, this morning rammed a traffic light at the intersection of Main and East Main streets and knocked it from its concrete standard on a traffic island. Klamath Falls police reported today.

According to investigating officers, Casabier was injured slightly, and was treated and released at Klamath Valley Hospital.

Officers Warren Beece and Rex King, who made the investigation, said that Casabier told them he was heading north on East Main when the right front wheel of his auto locked, throwing the car against the signal pole after it skidded on the wet street.

Casabier is scheduled to appear at municipal court this afternoon on a charge of violation of the basic speed rule.

**Eat Out More Often**

**Exciting Food News**

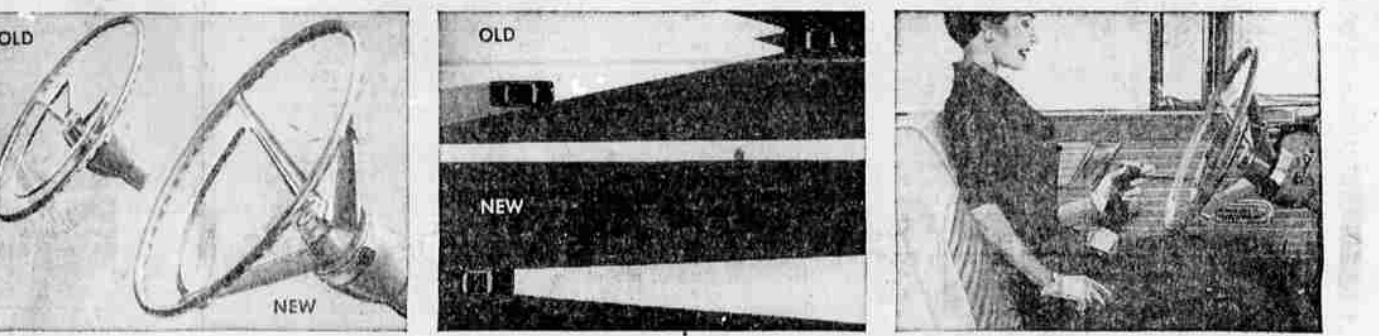
SEE WED. NIGHTS PAPER

**Ginda's**

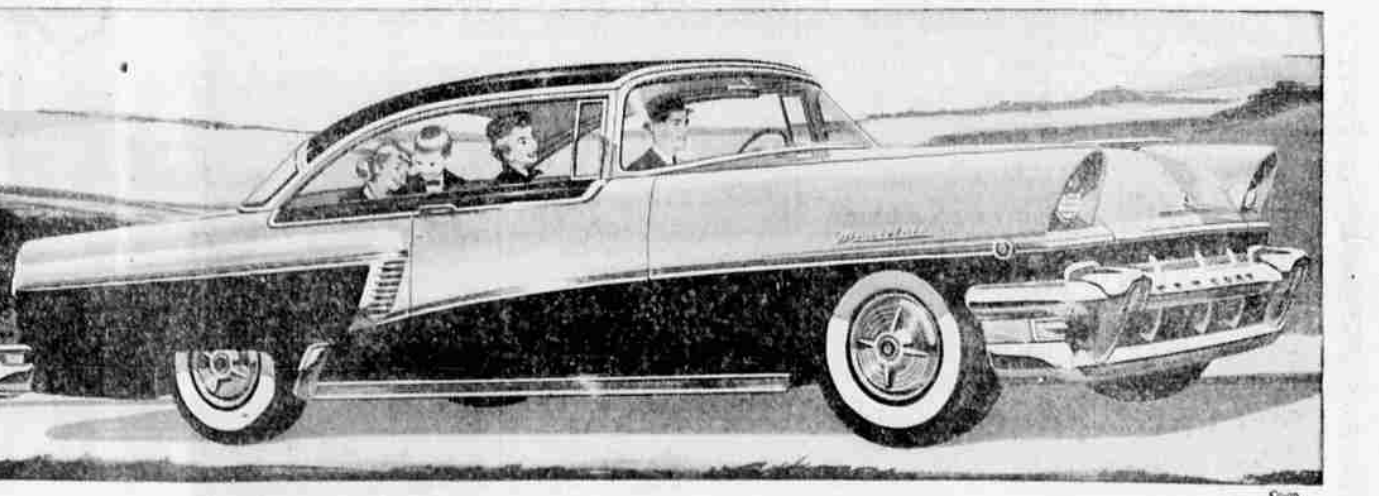
Complete Luncheons For Only 90¢

30. 6TH ST. & MAIN  
 KLAMATH FALLS, OREGON  
 Phone 6496 For Orders To Go

# Mercury offers safety features... More proof of THE BIG M's leadership!



- NEW IMPACT-ABSORBING STEERING WHEEL** with deeply recessed-hub and 3-spoke conical design bends under impact or pressure. The driver is better protected in case of accident.
- NEW SAFETY-BEAM HEAD LAMPS**, let you see both farther ahead (up to 80 feet more) and better (in fog, rain, snow). There's less glare, too, for oncoming drivers.
- NEW SAFETY SEAT BELTS\*** are securely bolted to floor supports and help protect wearers in emergencies. Available for driver and passengers. Easily adjusted with one hand.
- NEW PADDED INSTRUMENT PANEL\*** has a thick plastic cushioning filler with excellent protective qualities. Helps prevent injuries in case of impact against the instrument panel.
- NEW SAFETY DOOR LOCKS** are designed to hold doors closed under three times as much impact as former locks. Safety research shows there is much less likelihood of serious injury in accidents if passengers are not thrown from the cars.
- REAR DOOR SAFETY LOCKING DEVICE\*** is available in 4-door models. Children cannot unlock and open doors until the driver uses a key to trip the safety catch.
- NEW CUSHIONED SUN VISORS\***, NEW FULL-SWIVEL SAFETY REARVIEW MIRROR are extra safeguards for driver and passengers.
- NEW 235- AND 210-HP SAFETY-SURGE V-8 ENGINES\*** AND IMPROVED SAFETY-GRIP BRAKES. You enjoy more usable power than ever for split-second pickup, safer passing, easier hill climbing. Stopping action is smoother, surer, too.



Everywhere you look in the BIG M for 1956, there's something new to see or try.

For instance, THE BIG M's new 12-volt electrical system lets you start faster than ever. Mercury's exclusive-inlets-half joint front suspension is further improved to give you even more superb handling ease and comfort.

And THE BIG M is styled new in dozens of exciting ways,

from bumper to bumper. To accent its extra length, there's spectacular Flo-Tone color styling. Inside, fabrics are even more colorful, durable, luxurious.

For hardtop fans, the best news of all is that Mercury's famous low-silhouette beauty is now available in every series—Montclair, Monterey and Custom. See and drive THE BIG M at your Mercury dealer's. Come in today!

For 1956... The big move is to THE BIG MERCURY

Don't miss the big television hit, Ed Sullivan's "TOAST OF THE TOWN," Sunday evening, 8:00 to 9:00, Station KBEZ-TV, Channel 5.

**BASIN MOTORS**

424 So. 6th St.

**ESQUIRE**  
 PHONE 4517  
 LAST 3 DAYS

THE "BLACKBOARD JUNGLE" STAR IN ANOTHER ROCK-AND-SOCK DRAMA!

**"TRIAL"**  
 starring **GLENN FORD**  
**DOROTHY MCGUIRE**  
 Arthur John Kennedy - Judith Jurado

**Rafael CAMPOS - Juano HERNANDEZ**

**NEXT ATTRACTION**  
 John Wayne  
 Lauren Bacall  
 "BLOOD ALLEY"

**PELICAN**  
 PHONE 4572

**NOW PLAYING!**  
 The Story of the Teen-Age Terror!

**BOYS PRISON**  
 WILLIAM BENDIX  
 CLEMENTS DONOVAN WORTH

**"KILLER BAIT"**  
 Elizabeth Scott  
 Dan Duryea

**WEDNESDAY**  
 Tyrone POWER - Susan HAYWARD

**UNTAMED**  
 CINEMASCOPE  
 BROTHCOLONE  
 BEAN  
 ADULT MODERN AD

**THE GREAT SIOUX UPRISING**  
 JEFF CHANDLER

"Assignment Children"

**Now!**

**SHASTA**  
 DRIVE-IN PHONE 2-1515

**OPEN DAILY 6:00 P.M.**

**ON OUR GIANT SCREEN -**

**WHAT A DREAM TEAM!**  
 8 Terrific Tunes!

**DORIS DAY and FRANK SINATRA**

**Young at Heart**  
 TECHNICOLOR  
 GIG YOUNG - ETHEL BARRYMORE

Shorts - Cartoon

**TOWER**  
 PHONE 8-184

**NOW PLAYING!**

**POWERFUL STORY...MAGNIFICENT SPECTACLE!**

**CINEMASCOPE**

**LAND OF THE PHAROHS**  
 WARNERCOLOR  
 JACK HAWKINS  
 JOAN COLLINS  
 KERIMA - DEWEY MARTIN - LUCILLA BONI - CARTOON - NEWS