



1956 FORD SEDAN IS OFFERED IN THREE SERIES, the Fairlane, Customline, and Mailine. Above is the Customline four door in one of the 21 two-tone paint combinations offered on models which will be displayed by Balsiger Motor Company Friday, September 23.

### Ford Dealers To Show New '56 Models To U.S. Public

Safety features offered for the first time by any automobile company, power equal to the Thunderbird, and lower body silhouettes are available in 1956 Ford cars which Balsiger Motor Co. will display Friday, September 23.

The new Fords will be built in four series offering 18 body styles—two more than in 1955. They are available in 13 solid exterior colors, or 21 two-tone combinations.

A "Thunderbird Y-8" engine leads the power selections available for 1956. It is installed on Fairlane and Station Wagon models, and develops 202 horsepower for Fordomatic, or 200 hp for overdrive or standard transmission.

Ford safety research, coupled with studies of medical groups, led to development of a "lifeguard design" in 1956 models.

New door latches give added protection against the chance that doors may open under impact. They have been proved in full scale crash tests at Dearborn, Mich.

To keep the driver's chest from hitting the steering column in a crash, the new three-spoke Ford steering wheel has its center hub recessed 3 1/2 inches below the wheel rim.

Rear view mirrors have a special backing designed to prevent shattering.

Front and rear seat mountings have been strengthened so they will resist greater impact.

In addition, Ford offers two optional safety devices. Seat belts, designed to withstand pull up to 4,000 pounds, will help to hold occupants inside cars, and to prevent forward motion.

Styling advances in the Ford for '56 include a new grille with oblong parking lights at the outer ends, set in frames which wrap around the fender sides.

Body side molding is restyled for Fairlane, Station Wagon and Customline models. Restyled tail lamps and deck lid handles, a larger recessed hood ornament, and a completely new instrument panel are offered in all models.

The 1956 Victoria is 1 1/2 inches lower than the comparable 1955 model. Two door and four door sedans also have new tops reducing total car height almost a full inch.

However, headroom was not reduced since the contour change is mostly along the top's center line, and fabric headlinings are installed closer to the steel top.

An addition to the line is the Fairlane Station Wagon, a two door car which offers an eight by five-foot load space with tailgate extended. It is fitted inside with deluxe upholstery and trim combinations, and has special bright metal trim inside and outside.

Early in the model year, Ford will start production of a new four door Victoria style in which side pillars have been eliminated to provide all-around vision.

A 12-volt electrical system is

### Nixon Upholds Cartoon Artist

SAN FRANCISCO (UP) — Vice President Richard M. Nixon says Artist Victor M. Arnautoff had every right to satirize him in a controversial color lithograph exhibited at the San Francisco Art Festival.

In a telegram to Harold Zellerbach, president of the Art Commission, Nixon said he understood Zellerbach's position that a "public exposition sponsored and paid for by all the people is not a proper forum for partisan political cartoons."

It was Zellerbach who ordered the lithograph removed from the walls of the Civic Auditorium, where the festival was held. The festival closed Sunday night.

Nixon also said: "However, one of the most sacred precepts of our Anglo-American legal heritage is the right of individuals to criticize public officials, provided they exercise that right with due regard for the rights of others."

### On The Record

#### KLAMATH COUNTY BIRTHS

WISEMAN — Born to Mr. and Mrs. Rose Wiseman, September 19, a boy weighing 7 lbs. 13 1/2 oz. at the Klamath Valley Hospital.

BELL — Born to Mr. and Mrs. Bob Lynn Bell, September 19, a girl weighing 6 lbs. 7 1/2 oz. at the Klamath Valley Hospital.

DAVIS — Born to Mr. and Mrs. Wayne Davis, September 19, a boy weighing 7 lbs. 12 oz. at the Klamath Valley Hospital.

#### KLAMATH COUNTY MARRIAGE LICENSES

BRUNER-BROWN — Wayne Jerome Bruner, 24, and Betty Louise Brown, 22, both of Klamath Falls.

#### KLAMATH COUNTY SUITS

Dan Taylor vs. Lloyd D. Daniels, et al. suit for \$10,000 general damages and \$2,227.50 special damages arising from auto accident on September 21, 1953. Attorney for plaintiff, Donald A. W. Piper.



"I just love charge accounts; They go so much further than money!"

### Home Extension

MIDLAND  
By Mrs. Joe Horsley  
Mrs. A. Ager, chairman for 1955-1956 of the Midland Home Extension named her chairman for the coming year at the September 8 meeting of the unit held in Joan's Kitchen.

Those serving are: membership, Mrs. Ralph Sukraw; hospitality, Mrs. L. Houck; recreation, Mrs. O. Gildew; Associated Country Women of the World, Mrs. George Andrieu; health and safety, Mrs. F. Caslet; research, Mrs. C. Parker; publicity, Mrs. Joe Horsley and standard unit, Mrs. I. Merkey. The 4-H chairman is to be appointed at a later date.

The program for the coming year and the rummage sale slated for October 15 were discussed.

**FREE ROOF CHECK**  
Save costly inside repairs and painting from leaky roofs.  
DIAL 8866  
Also New Asbestos Siding.  
No Down Payment—  
36 Months to Pay  
ROGERS ROOFING

**2 FLOOR SHOWS NIGHTLY!**  
**NEW ACT EVERY TUESDAY**

The rummage sale will be held at the Emporium building on Main Street in Klamath Falls.  
Mrs. C. Parker won the promptness gift.

### SAVE ON Perfection

New 21-inch 4-Burner Electric Outlet Storage Compartment

## A Terrific Buy AT ONLY 189<sup>95</sup>

Trade-Ins Welcomed Many Others to Choose From MO. 6204

### NORTHERN STAMPS REDEMPTION CENTER

## Tele-piance Center

Modern Kitchens Our Specialty

**97 SUPPER CLUB**  
Choice Steaks . . . . . 2.50  
Southern Fried Chicken 2.00  
Ask about our party service for a free cake. Ph. 2-9532

**GUIZADO PETITIONS**  
PANAMA (AP) — Former President Jose Ramon Guizado has asked the Panama Supreme Court to reverse his conviction as an accessory in the assassination of

President Jose Antonio Remon. A petition filed Monday night by Guizado's lawyer, Dr. Felipe Juan Escobar, charged that the conviction by the National Assembly last March 29 was obtained through pressure, bribery and perjury.

### DANCE

to the music of the Starlighters Sat., Sept. 24th.

### ARMORY

Gen. Adm. 1.00  
OTI & High 75c  
School Stud. 75c

### Japan Cabinet Approves Bases

TOKYO (AP) — Japan's Cabinet Tuesday formally approved two of five planned U.S. Air Force Base expansions which rioting villagers, farmers and labor unionists tried to stop earlier this month.

Cabinet action is pending on the other three bases.

Takao Nishida, labor minister in the Cabinet, said expansion of Takikawa and Komaki air bases "is absolutely indispensable for the defense of this nation."

## War Declared On High Prices WHILE THEY LAST

Help us fight inflation With Low Prices! . . .

Check This for Ammunition

NEW	
1/2" New Galvanized Pipe	12c Per Foot
3/4" New Galvanized Pipe	15c Per Foot
1" New Galvanized Pipe	24c Per Foot
1 1/2" New Galvanized Pipe	38c Per Foot
2" New Galvanized Pipe	50c Per Foot

WE HAVE OVER 1 MILLION FT. OF USED PIPE IN ASSORTED SIZES FOR SALE!

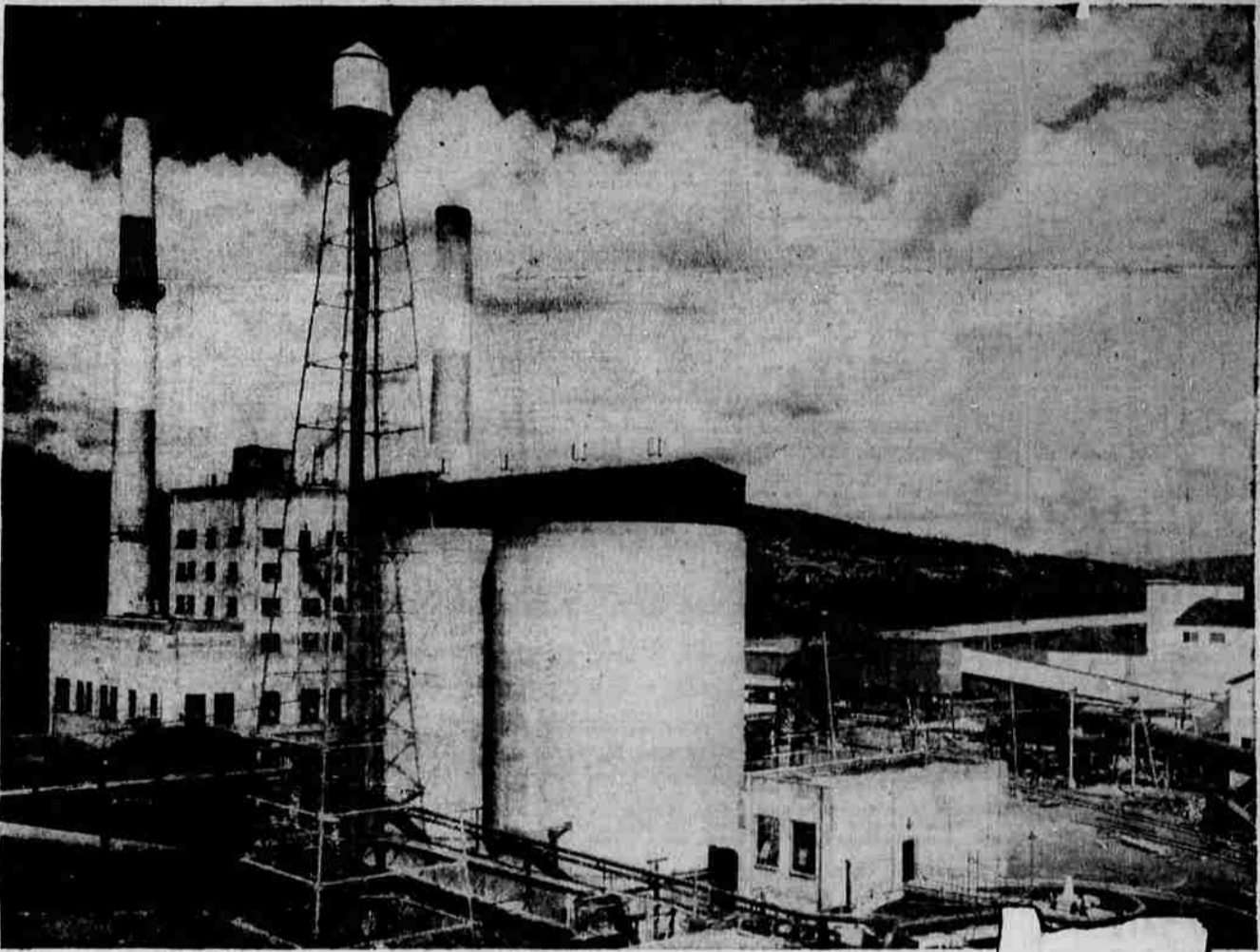
CASH MONEY ON SCRAP IRON

No. 1 IRON	\$18 <sup>00</sup> Per Net Ton
No. 1 CAST IRON	\$23 <sup>00</sup> Per Net Ton

## Klamath Salvage

801 BROAD Ph. 2-1677

## Building Oregon together . . . for 90 years!



## "LAND OF THE EMPIRE BUILDERS"

Wherever you look in Oregon, business and industry are being developed . . . turning to man's uses the immense resources that have been evident since pioneer days.

The quotation above is the title of Oregon's official state song. Its stirring words ably describe the vigorous, capable people who today are creating new prosperity in this great, green state.

This month, as we celebrate our 90th anniversary, we of the First National Bank wish to express our deep gratitude to the people of Oregon. Thanks to the confidence placed in us by the people of our state, we have grown to become the leading bank in the Pacific Northwest. It has been a wonderful 90 years. Let's keep on "Building Oregon Together!"

## 1st FIRST NATIONAL BANK OF PORTLAND

"LET'S BUILD OREGON TOGETHER!"  
Member Federal Deposit Insurance Corporation

Klamath Falls Branch  
South 6th Street Branch  
Merrill Branch

70 STATEWIDE BANKING OFFICES TO SERVE YOU

"We've found the coffee that tastes as good as it smells"

THE COFFEE WITH THE Aromatic Flavor

at **SAFEWAY**