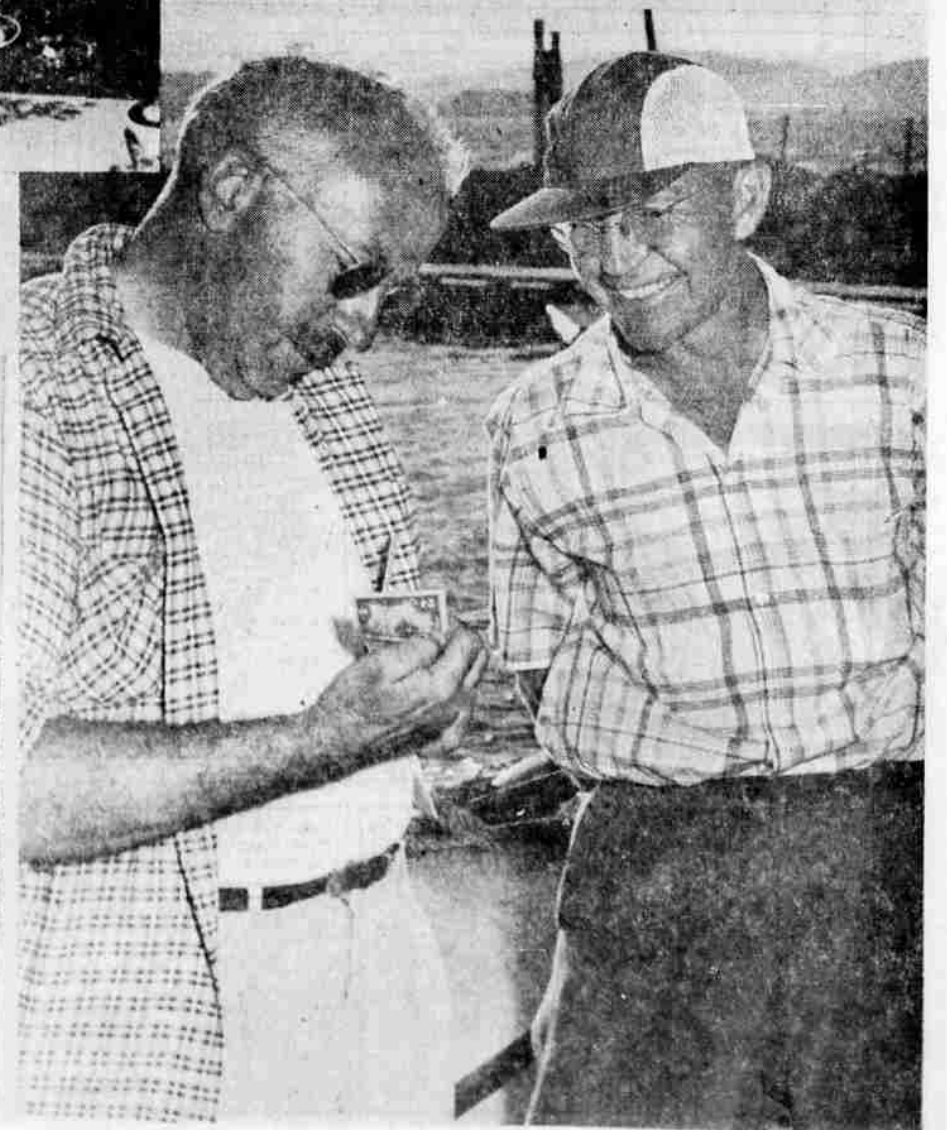
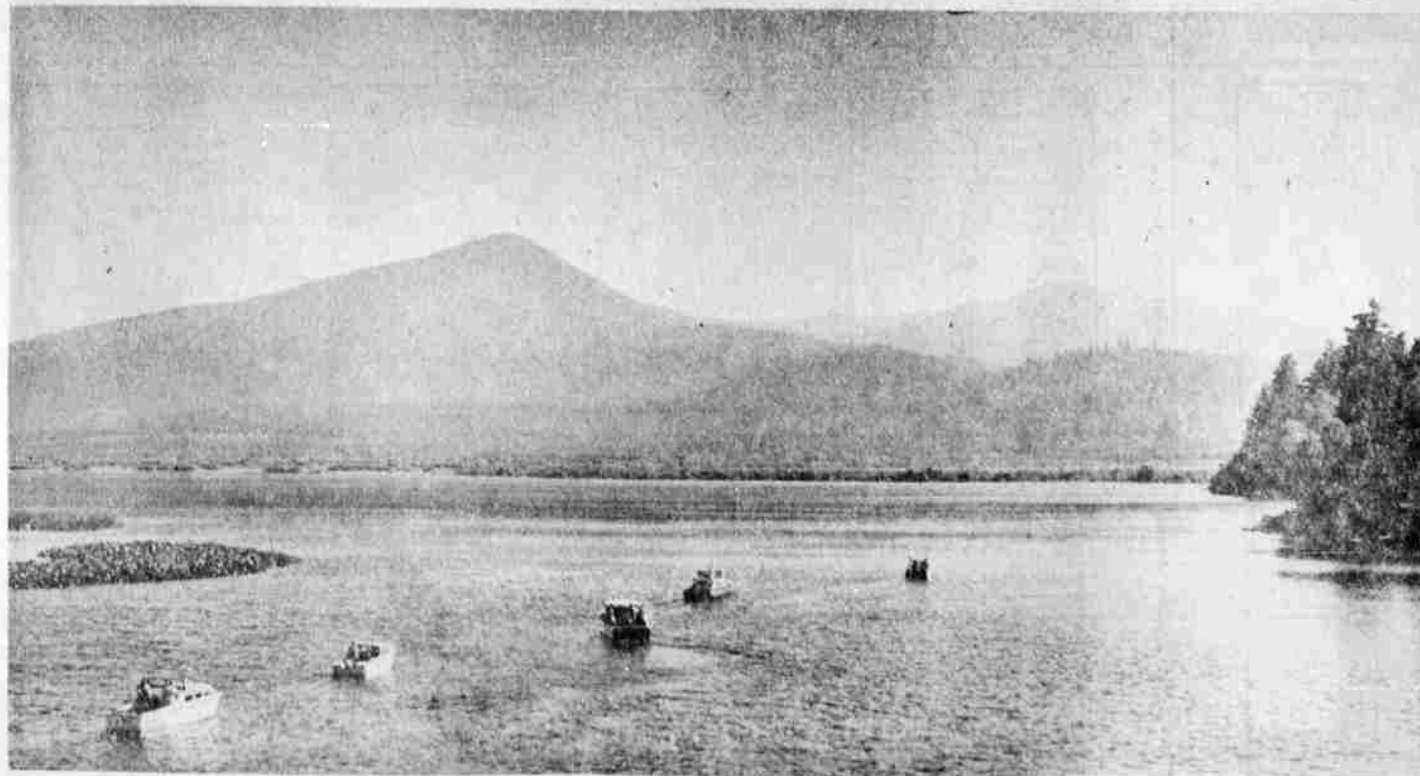
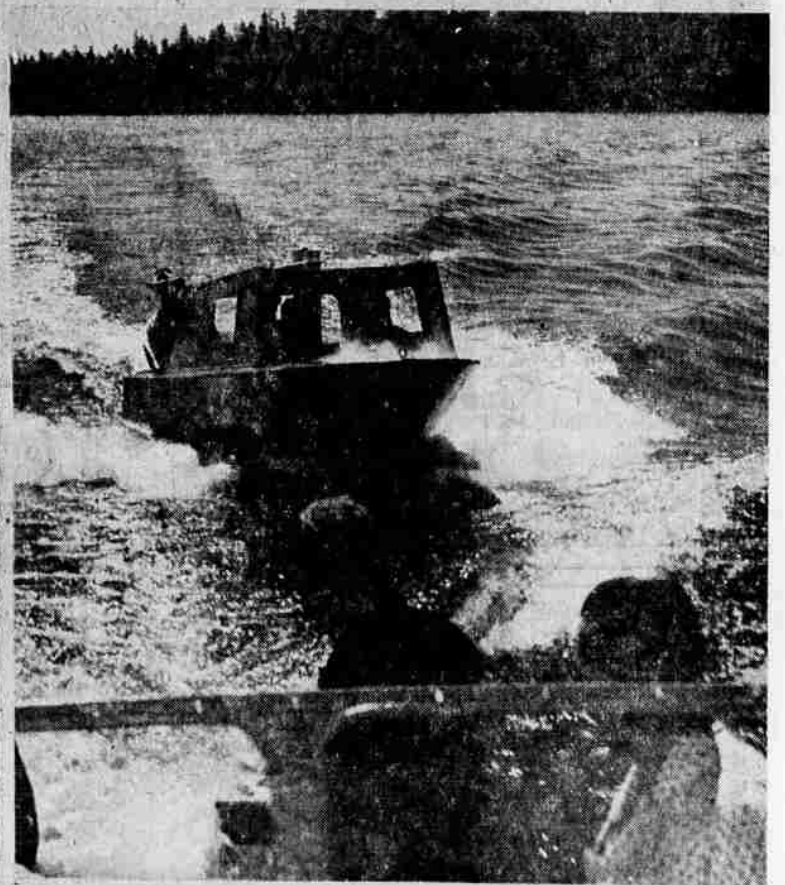
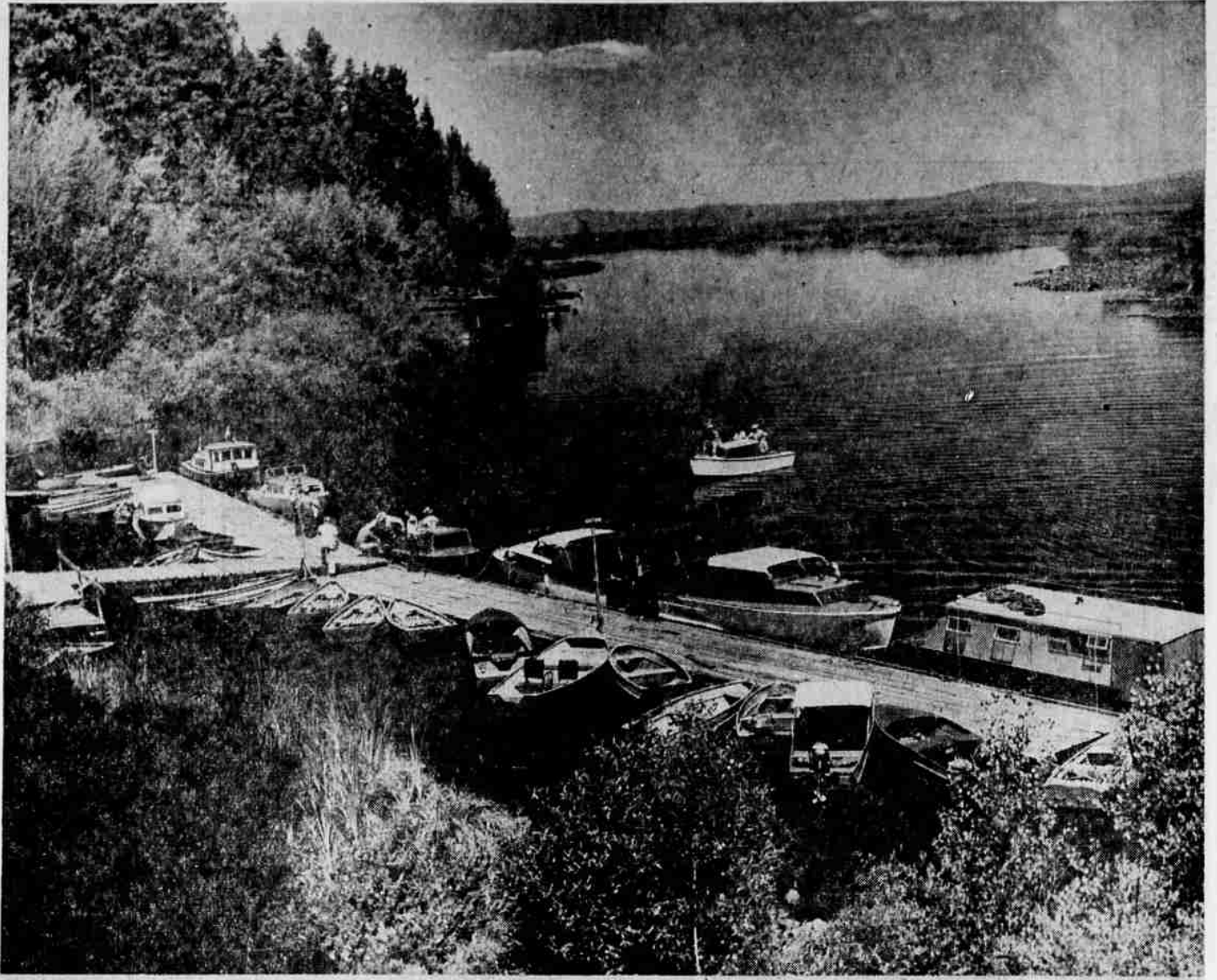


Algae Study Tour Held By Chamber

THE KLAMBASSADORS, visiting group of the Klamath County Chamber of Commerce, combined a community visit and summer pleasure trip on Thursday, August 11. The "Algae Fleet" of the chamber provided water transportation for the group to the Pelican Bay area. (The "Algae Fleet" was so named because of the chamber's successful efforts in setting up a scientific study of Klamath Lake conditions that stimulate the growth of algae in its waters with an aim of determining if any control measures might be practical. Dr. Harry K. Phinney of Oregon State College is directing the three-year study that has been underwritten by the Oregon and California Klamath River commissions, Klamath County and the city of Klamath Falls.) The top picture shows the fleet as the last cruiser came in to tie up at the Rocky Point Resort moorage. Left center: Laurence Brown, Tom Gee and Roy Premo watched Grant Cosgrove sample the sparkling flow at Harriman Lodge for its freedom from algae. Center, front to back: Tom Gee, Keith Cobo, Orth Sisemore, Deb Addison, Sen. Harry Boivin, Bud White, Casper Moty and Will Wood were snapped as they enjoyed an ample luncheon at Frontier Guest Ranch. Right center: Chet Langslet's hunting launch emitted steam from its newly overhauled motor as it overtook Dr. Hugh Swaney's cruiser which carried photographer Don Kettler, Rex Dye and a guest looked back and N. B. Drew peered around the cabin of the Langslet boat. Lower left: The fleet cruised out into Pelican Bay for the trip to home port at the Klamath Yacht Club. Lower right: Deb Addison, chamber president and skipper of the "Dog's Nose," examined a two dollar bill, presented to each boat owner for "services of the day," on tying up in the evening at the Yacht Club. Chamber Director Keith Cobo grinned his approval.



PHOTOS BY
DON KETTLER