



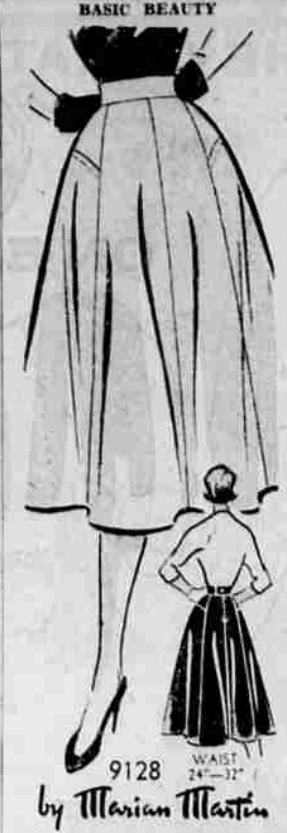
**BERMUDA PANTS** are featured for wintertime sleepwear. For collegebound girls, Carter's Wild Violet print Bermuda pajamas will be a dormitory delight. Of softest cotton-knit, so that washing is easy and ironing not necessary, the loose, Italian-style blouse with puffed sleeves and smocked bib-front falls loose and full over the Bermuda pants. The Wild Violets came in blue or pink on a white background.



**AN EXPANDABLE WARDROBE** can be created by determining a basic color scheme. Here a coat of white and biscuit checked wool tweed is shown over a matching biscuit colored wool jersey dress with slim lines and a soft scarf neckline. The coat also harmonizes with suits and other dresses. The tunic-length coat has side slits, giant pockets and tapered set-in sleeves which lend to the longer, slimmer look of the season. Photo from the Wool Bureau.



**GRANNY GOWN** is a new old favorite. The long, sweeping fullness and smocked neckline so reminiscent of the gown grandmother used to wear is making a welcome appearance this fall in the wardrobe of the back-to-school girl. Carter's Granny Gown, of softest cotton-knit in a blue or pink rosebud print may be worn loose or in peignoir style. Dainty ruffles of nylon lace trim the rounded, smocked neckline yoke.



**BASIC BEAUTY**  
Fashion "must" for a fall separates wardrobe! The beautiful flare skirt that teams so well with all your blouses, sweaters, glamorous evening tops. This new style—as easy to sew as it is flattering to wear: Perfect for bengaline, soft woolsens, velveteen!  
Pattern 9128: Misses' Waist Sizes 24, 25, 26, 28, 30, 32 inches. Size 28 takes 2 1/2 yards 39-inches.  
This easy-to-use pattern gives perfect fit. Complete, illustrated Sew Chart shows you every step. Send thirty-five cents in coins for this pattern—add 5 cents for

each pattern for 1st-class mailing. Herald and News, Pattern Dept., N. Y. Print plainly name, address. Send to Marian Martin, care of 237 West 18th St., New York 11, with zone, size and style number.

**Get them the finest Glasses anywhere from DR. Wm. T. HODSON**  
Registered Optometrist

Every parent wants his children to have the finest eyewear and the finest is always theirs from Dr. Wm. T. Hodson, Optometrist. Dr. Hodson, takes time and care in examining your children's eyes to make sure that all of their visual requirements are taken care of. Children's glasses may be insured. This means if your child breaks his glasses during the school term, lenses will be replaced free of charge. Dr. Hodson, will also fit your child's glasses with unbreakable lenses. Take care of your children's back-to-school visual needs now.

**DR. Wm. T. HODSON**  
Optometrist  
with offices at  
**STANDARD OPTICAL CO.**  
715 Main St., Klamath Falls

**Pretty Plum Parfait Pie**

1 package raspberry-flavored gelatin  
1 Hot plum juice plus water to make 1 1/2 cups  
1 pint vanilla ice cream  
1 1/2 cups drained sweetened sliced ripe fresh plums (blue, red, or yellow)  
1 baked 9-inch pie shell, cooled

Dissolve gelatin in hot liquid in 2-quart saucepan. Add ice cream by spoonfuls, stirring until melted. Then chill until thickened but not set (10 to 20 minutes). Fold in drained plums. Pour into pie shell. Chill until firm (15 to 25 minutes). Garnish with whipped cream.

**MACARON COOKIES**

This recipe for a crisp confection to go with an ice cream dessert comes from Mrs. William Sullivan of Lakeview.

1 cup shortening  
1 cup brown sugar  
1 cup white sugar  
2 eggs  
2 cups flour  
2 cups quick oatmeal  
2 cups coconut  
1 teaspoon baking powder  
1/2 teaspoon salt  
1 teaspoon soda  
1 teaspoon vanilla

Cream shortening and sugars, add eggs and then flour sifted with soda, baking powder and salt, then remaining ingredients. Shape size of walnuts and press flat. Bake on greased sheet at 350 degrees.

**DECORATOR TIPS**  
In choosing a carpet for a large room, use patterned or tone-on-tone carpet or warm colors such as nutria, caramel, rose, red or gold. For small rooms, use light or cool colors such as grey, green or blue. Use light or bright colors in a dark room and medium to dark colors in a room with an abundance of light. Pale and pastel colors are very popular this fall. They tend to make a room look larger and are especially effective in many of the smaller homes today. Wall-to-wall carpeting also adds to this illusion of spaciousness.

**Introducing SNOW'S Sardines**  
for scrumptious snacks!

**Norwegian Style** with delicate **Hickory Smoked Flavor**  
PACKED in OLIVE OIL

...tempting as appetizers  
...fantastic in salads  
...pleasing for light lunches and suppers.

**STOCK UP ON SNOW'S CHOWDERS**

**Ice Cream**

Time was when an ice cream sundae was a special treat, bought at the corner drug store or ice cream parlor, climaxing a Sunday drive, or as gratified payment for good behavior after a visit to the dentist. Remember? How lucky we are these days; ice cream sundaes are an everyday favorite which can be made in our own kitchens at a moment's notice.

Ice cream is for everybody, anytime. You can buy it at many different stores in quantities from one dainty serving to a hefty half gallon; it comes in a variety of mouth-watering flavors (but good old vanilla is still top favorite); and, don't mention it to Grandma, but today's ice cream is a better product in quality, flavor and uniformity.

There are so many different, delicious ways to serve ice cream you could serve it every day for months and not duplicate the dish. Try developing your own ice cream specialty to serve as a perfect finish for patio or porch meals, or as an "Ace-in-the-hole" dessert for unexpected guests. You may find just the one you like in these good and easy sundae sauces and ice cream sodas.

**HOT PEANUT CHOCOLATE SAUCE**

1 6-oz. package semi-sweet chocolate bits  
2/3 cup light corn syrup  
1/4 cup milk  
1-3 cup chunk style peanut butter

Combine chocolate and corn syrup in a double boiler and heat until chocolate is melted. Add milk and peanut butter and stir until blended. Serve warm with vanilla ice cream. Makes 1 1/2 cups.

**GINGER-ORANGE ICE CREAM SODAS** (serves 1)

4 teaspoons frozen concentrated orange juice  
4 tablespoons cream  
1 pint orange sherbet  
3 7-oz. bottles ginger ale  
Whipped cream

Using 10-oz. glasses, spoon 1 teaspoon concentrated orange juice and 1 tablespoon cream into each glass. Blend. Nearly fill glasses with chilled ginger ale. Spoon orange sherbet on top of each. Top with a spoonful of whipped cream and a maraschino cherry.

**MARSHMALLOW MINT SAUCE**

1/2 cup water  
1/2 cup sugar

**Work, Sleep, Play In Comfort**

**Without Nagging Backache**  
Nagging backache, headache, or muscular aches and pains may come on with over-exertion, emotional upset or day-to-day stress and strain. And folks who eat and drink unhealthily sometimes suffer mild bladder irritation...with that restless, uncomfortable feeling...  
If you are miserable and worn out because of these discomforts, Doan's Pills often help by their pain relieving action, by their soothing effect to ease bladder irritation, and by their mild diuretic action through the kidneys—tending to increase the output of the 15 miles of kidney tubes.  
So if nagging backache makes you feel droopy, out, miserable, with restless, sleepless nights, don't wait, try Doan's Pills. You'll get the same happy relief millions have enjoyed for over 60 years. Ask for new, large, economy size and save money. Get Doan's Pills today!

**OUR HAMS ARE SO EXACTLY CURED, THEY HAVE A TASTINESS INSURED!**

**Morrell's Ready To Eat Picnics**  
43<sup>c</sup> lb.

**Beef Roasts** GOOD 31<sup>c</sup> lb.

**Slab Bacon** Morrell's 6 to 8-lb. Average 49<sup>c</sup> lb.

**Veal Steak** Milk Fed 49<sup>c</sup> lb.

**Potatoes** GEMS U.S. No. 1 25 lbs. 25<sup>c</sup>

**DIABETIC FOODS!**  
Fruits, Vegetables, Candies, Cookies and even Complete Dinners. Every Health Food You Need.

**SAV-MOR**  
8th & PINE Phone 8513

**GOOD YEAR**  
STOP AND SAVE AT THIS SIGN

**SCHOOL DAYS AHEAD!**  
Get Ready NOW... on **EASY TERMS**

**SYMPHONIC 3-SPEED RECORD PLAYER**

A marvel in portable performance—a beauty in styling! Plays records of 3 speeds and all sizes. Powerful amplifier, Alnico 5 PM speaker. Lightweight pick-up arm with crystal cartridge and all-purpose needle. Compact, smartly styled carrying case, covered in two-tone red or green leatherette, trimmed with white beading.

**19<sup>95</sup>**  
2.00 Down - 1.25 Week

**NEOLITE Luggage!**

24" Two-roller, fitted with 3 strong hangers plus wrinkle-free wall protector... \$26.70 plus tax.

21" Companion case, a smart trip favorite, has zippered accessories pocket for divider... \$11.25 plus tax

3.70 Down 1.25 Week

**4 NEW TREADS 4 NEW TUBES 39<sup>95</sup>** 670x15

New Tire Guarantee

4-6.70 x 15 Tires and Tubes ..... 39.95  
4-7.10 x 15 Tires and Tubes ..... 47.95\*  
4-7.60 x 15 Tires and Tubes ..... 48.95\*

\* Plus recappable tires

**1<sup>25</sup> Per Week**

Let Your Old Tires Make The Down Payment.

Free Mounting

**G.E. CLOCK RADIO**

Smart plastic cabinet blends with off-set clock-face panel. Features wake-up alarm, appliance outlet, record player plug-in and dial boom tuning.

**41<sup>95</sup>**  
4.70 Down - 1.25 Weekly

**26" HI-WAY PATROL BICYCLE**

Top flight value at a low, low price! Smooth-riding, Columbia-built with high-priced features! Skid-resistant, longer wearing Goodyear G-3 Balloon Tires, famous Traxel spring saddle, streamlined full-length chain guard, and double-braced fenders. It's rugged and sturdy, with a silver-braced frame and beautiful baked enamel finish. Boy's model, Cavalier red with ivory rims—girl's, Berkshire blue with ivory rims.

**39<sup>95</sup>**  
4.00 Down - 1.25 Weekly

**HOTTEST TIRE VALUE IN TOWN**  
Famous Super-Cushion by Goodyear

**13<sup>75</sup>** 600x16, plus tax and recappable tire  
1.00 Down Per Tire

**SAVE ON BOTH BLACK AND WHITE SIDEWALLS!**

TIRE SIZE	Super-Cushion Black Sidewalls		Super-Cushion White Sidewalls	
	REGULAR PRICE*	SALE PRICE WITH MOUNTING**	REGULAR PRICE*	SALE PRICE WITH MOUNTING**
6.00 x 16	17.30	13.75	6.00 x 16	21.20 16.95
6.40 x 15	18.40	14.75	6.70 x 15	23.65 19.10
6.70 x 15	19.30	15.45	7.10 x 15	26.20 21.25
7.10 x 15	21.40	16.95	6.50 x 16	28.10 22.85
6.50 x 16	22.95	18.45	7.60 x 15	28.65 23.25
7.60 x 15	23.40	18.75		

\*Plus Tax \*\*Plus Tax and Recappable Tire

**GOOD YEAR SERVICE STORE** FREE PARKING

11th and Klamath Phone 8141