



Electrical Co-op Gives Fund Report

LAPINE — The mid-year financial and statistical report of Midstate Electric Cooperative shows outstanding growth and a more favorable financial position. The report was prepared by George M. Larimer, manager.

An even 100 miles of power lines were added to the system during the fiscal year which ended August 1, making a total of 341 miles that are now energized and in service. Six hundred and twenty-three customers are now served and membership in the cooperative has grown to 1,029.

During the past year, the headquarters building has been completed here. According to Larimer, its well-planned office space and shop facilities have added to the efficiency of operation.

Most recent customers to be served are five summer homes at Pringle Falls. The line was completed August 17. The Paulina and East Lake areas received service within the last two months. Short extensions have been made this season to Wickiup Reservoir, Haner Park and Fall River.

The Crescent Lake and Odell Lake lines are now virtually completed with the summer homes, lodge and Southern Pacific facilities at Cascade Summit being connected and receiving their first power this month.

Average monthly revenue during the past year has been \$7,258.70. Monthly salaries total \$3,417.70, which is 47 per cent of gross revenue. Other expenses account for an additional 43 per cent.

A group insurance program which includes medical and hospital benefits was inaugurated for employees in June of this year. Reserves are being accumulated to meet loan repayment schedules.

The plant of the Lapine Forest Industries located on the Great Northern Railway, one mile west of Lapine, now partially completed, will be an all-electric operation. It will be chiefly a remanufacturing and planing mill and will receive



OLIVA WALTERS, daughter of Mr. and Mrs. George Walters of Dunsmuir, is collecting votes in the contest for Queen of the Weed Italian Carnival to be held under the sponsorship of the Weed Chamber of Commerce the weekend of September 10-11 in Weed. Selection of queen will be made on the basis of votes turned in by the contestants through sale of ticket donations.

its power from Midstate Electric. Officials of the L & H Lumber Company recently conferred with the cooperative's engineer relative to power needs for a proposed sawmill at Crescent Lake. If this plan materializes, it will increase employment in the area served by Midstate.

Larimer stated that it is his belief that the progress of the past year is particularly encouraging. Service-wise, he reports that conditions have been good, outages and operational failures have been rare.

WE GIVE S&H GREEN STAMPS
Farmer's Y Implement
Merrill-Lakeview Jct. Ph. 5053

N.Y. Governor Harriman Estimates Flood Damage

NEW YORK (AP) — Gov. Averell Harriman estimates the floods that rampaged through several counties of southeastern New York last week left damage amounting to about 15 million dollars.

About a third of this sum, he said, represented destruction of public property, such as roads, dams and sewers. All the remaining loss was sustained by private property.

In summarizing the New York flood situation on a WRCA-TV

broadcast last night, Harriman stated:

"A lot of damage was done, and a great many people are in distress, but not in the volume and size of our neighboring states."

Yesterday he appointed John W. Johnson, superintendent of public works, to administer any federal funds that may become available for repair of public facilities damaged by the flood. Johnson immediately wired local officials and

asked for damage estimates as soon as possible.

A. D. O'Connor, regional administrator for the Federal Civil Defense Administration, was asked to designate an official to work with Johnson in selecting projects for disaster aid.

Help in restoring necessary public facilities was promised last night by the Army Engineers, who announced they had been assigned this job by President Eisenhower. Col. John T. O'Neill, New York

district engineer, said his men would help local authorities repair damaged sewer, water, electric and communications lines. Where the job is too big for local authorities to handle, he added, the engineers will take over the task entirely.

O'Neill and Lt. Gen. S. D. Sturgis Jr., commanding general of the engineers, will meet with Harriman today to discuss the rehabilitation program. Meanwhile, the flood-stricken

section of the state, where 800 persons were still being cared for by the Red Cross, continued to work at the wreckage and debris left by the torrential waters. Hardest hit by the New York floods was the city of Port Jervis.

HOTELS
OSBURN HOLLAND
EUGENE, ORE. NEWPORT
Thoroughly Modern
Mrs. J. E. Earley—Joe Barly Jr.
Proprietors

Russians List U.S. Ideas

WASHINGTON (AP)—Twelve travel-weary Russians, their American farm tour completed, will soon be flying homeward with information and ideas which may help them cure some of the ills of Soviet farming.

Some of the things they learned were listed yesterday by their leader, Vladimir Matiskevich, during a talk at the National Press Club. As first deputy minister of Russian agriculture, he is in a position to make use of them.

He expressed hope too that the visit would lay the groundwork for better U.S.-Soviet relations and said his most vivid impression from the six-week tour was of the warmth and friendship the American people showed toward his group.

He and three others, who remained in Washington overnight, rejoin in New York today the eight other members of the delegation who left the capital yesterday.

Tomorrow they all plan to go to Canada for a two-week tour. The Canadian jaunt will also be very useful for them. Some of the climatic conditions in Canada are more like those in important areas of the Soviet Union, whereas some of the areas they visited in the United States have no real counterparts in their own country.

Matiskevich told the press club of a long list of the things he said his farm delegation learned during the tour here. He expressed a desire to take home with him some of the famous Santa Gertrudis cattle from Texas, to purchase American farm machinery, to send delegations here to study specific phases of American farming.

Among other things which he said could be applied in Russia were the U.S. system of stock feeding for cattle, the production of hybrid feed corn and the mechanization of small-scale farm processes.

Do FALSE TEETH Rock, Slide or Slip?

PASTEETH, an improved powder to be sprinkled on upper or lower plates, holds false teeth more firmly in place. Do not slide, slip or rock. No gummy, gooey, pasty taste or feeling. **PASTEETH** is alkaline (non-acid). Does not sour. Checks "plate odor" (denture breath). Get **PASTEETH** at any drug counter.

MY PAY CHECK GOES...

	MONTHLY PAYMENT	BALANCE DUE
CAR PAYMENT	52.00	312.00
FURNITURE PAYMENT	8.00	72.00
STOVE PAYMENT	6.00	64.00
DOCTOR BILL	5.00	125.00
DENTIST BILL	10.00	35.00
JEWELRY STORE	4.00	64.00
TIRES FOR CAR	5.00	30.00
	90.00	702.00

Pay all the above bills and make one convenient payment of \$38.00 a month. You then have the other \$52.00 a month to enjoy your family and friends.

COMMERCIAL INDUSTRIAL Finance Corporation

107 No. 9th St. Bill Canton, Mgr. Phone 7711
S-215 M-223



DON'T show me bifocals

Examine me for Notes Blend-Vue lenses!

Blend-Vue lenses are obtainable exclusively through Dr. Noles Optometrists at Columbian Optical Company. If you have dreaded getting new glasses because you knew your next pair would be bifocals, Dr. Noles can give you the appearance of youth and freedom from bifocal discomforts through

this sensational lens, which eliminates the objectionable bifocal line and unpleasant eye-jump caused by old-fashioned bifocals. The new Notes BLEND-VUE lens is not to be confused or compared with ordinary continuous vision lenses, which we have dispensed for many years.

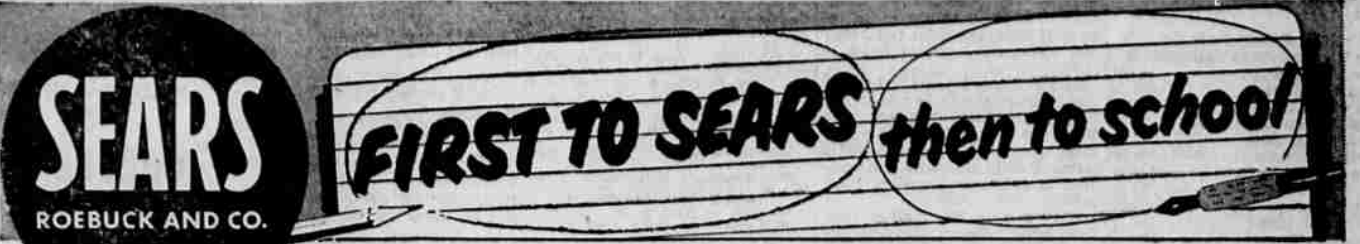
Pleasant, courteous credit always.

with offices at

COLUMBIAN OPTICAL CO.

730 Main St., Klamath Falls, Ore.

*Dr. Omar J. Noles and Don R. Haylor, Sr.



be at the head of your class in --

Pilgrim Sport Shirts

- High count construction more fabric strength for longer wear
- Wrinkle resistant fibers return to original shape when bent
- Choose from 3 fabrics: Rayon, Gabardine, Corduroy

Save by buying several **\$3.44**



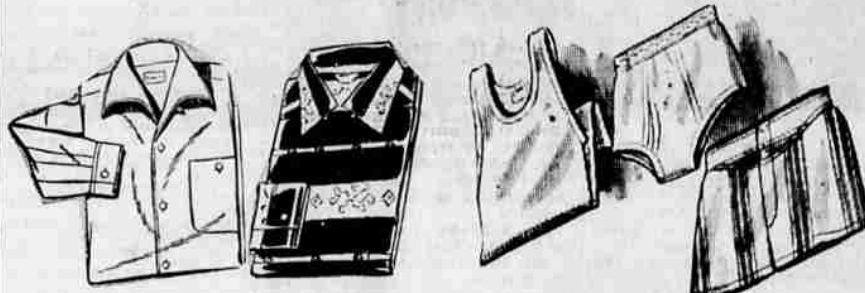
Acetate Rayon



Gabardine



Corduroy



Pilgrim for color and smart "Continental Looks"

3.98 to 4.98

Underwear Specials!

3 for 1.88

Gay, European designing in modern shirt styles. Choose from solid colors, stripes or prints. Washable. All sizes and many colors.

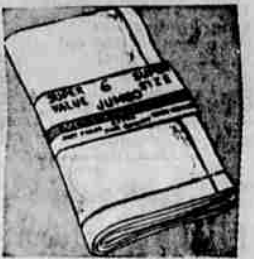
Fill your underwear wardrobe with famous Pilgrim quality shirts, shorts and briefs. Long-wearing, extra tough combed cotton. No finer buy available — anywhere!



Men's Dress Socks Pilgrim Flex-Fit All Nylon

Only 69c

Randomize color and rib patterns in a big color assortment. Dry in a jiffy.



Handkerchiefs Jumbo All White

Only 19c

Men's jumbo, 20x30 inch steel sturdy white cotton with one inch hemstitched hem. A favorite of working men!

FRIDAY NIGHT IS FAMILY NIGHT AT SEARS



Men's Warm Sheen Gabardine Jackets 9.89

Rayon and acetate gabardine with Millum processed satin lining. Pleated back, padded shoulders. Sizes S-M-L-XL



Men's Denim Slacks Patch Pockets 3.98

Wonderful comfort for leisure wear or play! Cool denims have snap fastened waist. Sanitized. Max. Shr. 1%.



Anti-Freeze Type Nylon Blouse 12.95

Lined with warm nylon fleece. Water-repellent, hand washable. 7 smart colors. Sizes 36 thru 46.



Leather Sleeve Warm-up Jacket 13.95

Sleeves are durable Ranch Hide. Snap front. Wide color selection. Sizes 36-46.



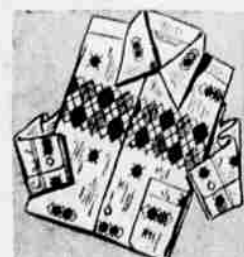
Argyle Dress Hose High Style Pastel Colors 10-13..... 69c

A perfect addition to any man's wardrobe. Smart, good-looking... yet they wear so long. Elastic tops hold firm.



Cowhide Jackets Handsome Seasonal Browns Sizes 34-48 17.95

Sturdy, good-looking up front short jackets. Made with rayon quilted to imitate cowhide texture of Seal.



Warm Sportshirts Soft Seeded Cotton Flannel Pilgrim..... 2.98

Perfect for fall. Fine flannel shirt can be worn in or out. Has several argyle chest stripes, spread collar.



Men's Pajamas Colorful Cotton Broadcloth Sizes A to E..... 2.98

Nylon reinforced crease seams give you to 2 1/2 times more wear. Elastic waist inserts. Cool, middy. Max. shrink. 1%.



Pilgrim Sweaters Made of 100% Virgin Orlon® Sleeveless..... 3.98

Luxury soft long wearing Orlon® in 10 handsome colors. Strong sweat-resistant. All sizes. "Do not" acrylic fiber.

Satisfaction guaranteed or your money back SEARS

Hours: 9 to 5:30 - Fridays: 9 to 9
133 So. 8th Phone 5188