

AIR TRANSPORTATION will fan out in all directions from Klamath Falls if applications filed by West Coast Airlines for new routes are approved by the Civil Aeronautics Board. The solid line shows the present service provided by West Coast, and the broken lines indicate proposed new routes. Officials don't expect the lines to be in operation in less than two years.

WB To Watch For Fallout

WASHINGTON (AP) — President Eisenhower Saturday gave the Weather Bureau responsibility for improving forecasts of radioactive fallout patterns.

The action was one of several which Eisenhower approved delegation by the Federal Civil Defense Administration (FCDA) of various responsibilities to the Commerce and Interior departments.

Commerce, under which the Weather Bureau operates, also would prepare and issue forecasts and estimates of areas likely to be covered by fallout as a result of enemy attack. Such information, to be issued currently as well as in an emergency, would be made available to federal, state, and local civil defense authorities.

The secretary of commerce also was instructed to help plan, through the bureau of roads, highway improvement to meet civil defense requirements.

The secretary of interior was delegated responsibility for directing federal activities in procuring and distributing adequate fuel supplies to attacked areas and reception centers.

The delegation to the two departments was the third in FCDA's program to give responsibility to other agencies for carrying out specific civil defense programs.

Klamath Potential Air Hub If WCA Application OK'd

BY JOE RIGERT

Klamath Falls probably will become the center of air transportation in Southern Oregon within two years if West Coast Airlines is granted its wish.

This was the word received by the Herald and News from E. B. Code, vice president of operations for West Coast, in a long-distance telephone call to Seattle.

Code said that it would take two years to hold the Civil Aeronautics Board hearings and complete details of the proposed new routes from here.

West Coast has applied to the CAB for three branch lines from Klamath Falls.

One is to Portland through Bend and Redmond, currently served by United Air Lines, which has applied for permission to withdraw from the route. A second would be a non-stop flight to Reno and a third would be to Boise via Lakeview and Burns.

This would give local passengers direct air access to all four points of the compass.

WCA has only one route from Klamath Falls at present. This is to Medford, and from there travelers can either go north to Roseburg, Eugene and Portland, or south via Southwest or United Air Lines to San Francisco.

The proposed new routes would provide a direct route north to Portland, east through Boise, and south through Reno.

Code said that the primary purpose of the contemplated new routes is to provide service to the East through these points, that is Reno and Boise.

He added, however, that they also are part of an overall plan to provide local service to isolated communities not so served now. The schedule ordinarily would call for two flights daily.

Addition of these routes would save considerable time for East-bound passengers. Now they must travel to either Portland or San Francisco in order to catch a flight East.

The flight to Portland takes three and one half hours and the one to San Francisco, two and one half hours. This means that a comparable saving of time will be effected if the new route to Boise is approved.

West Coast Airlines has operated in Klamath Falls since June 29, 1952, and has two incoming and outgoing flights each day. The airline was formed in 1947 in a merger with Empire Airlines. At present its fleet includes 13 two-engine DC-3's.

Bob Moore, local manager for WCA, says that passenger loads have steadily increased here since 1953. Some 950 travelers were handled at the airport in the first six months of 1954, and that number has jumped to 1,235 for the same period this year. This is an increase of almost 30 per cent.

Moore expects the load to more than double if and when West Coast takes over the Bend-Redmond-Portland route.

United Air Lines applied to withdraw from Klamath Falls last February, but no action has yet been taken by the CAB on this request.

G. L. Palmer, local United Air Lines manager, said he has no idea when the application will be considered. A similar request took 23 months in The Dalles, but Palmer doesn't expect such a lengthy interim before action on the local request, mainly because United was the only airline there, which is not true in Klamath Falls.

United has two flights daily—one to Portland and the other to San Francisco and points east.



FAMILY ALBUM

TOM McCARRY



Then



Now

By LYLE DOWNING

Tom McCarry, district freight and passenger agent for the Southern Pacific Company, worked a year for the railroad before he saw it!

But it's not so paradoxical as it sounds. He started his railroad career in Southern Pacific's Canadian office in Vancouver, B.C. McCarry is a son of Vancouver. A graduate of the Christian Brothers College, his native city, McCarry began his career as a clerk until after he had been with the Southern Pacific for several months.

His first job after leaving school was a clerical position in the office of a Vancouver wholesale fruit company. He joined the Southern Pacific in the same capacity.

FARMER AMBITION

"When I was a kid," McCarry recalls, "I had an ambition to be a farmer. In fact, I once operated a tractor. Until the Southern Pacific hired me in Vancouver, I had no idea of ever being a railroad man."

Although the Southern Pacific took its time in letting McCarry see the railroad, when the company finally got around to it, they showed him the vast transportation system in a big way. In 1953, he traveled over the system from Portland to New Orleans.

McCarry is 100 per cent sold on railroading. He says young men seeking a career would be wise to investigate the opportunities offered by American railroads.

"When it comes to providing the maximum amount of safety, comfort and speed," he declared, "no form of transportation will ever replace the railroad. Railroad research to improve service never

stops. Electronics are playing a big role in the operation of the railroads today. The railroads have good jobs for college-trained men in many fields."

McCarry points with pride to the strides made in recent years by the Southern Pacific. Eighty-five per cent of the trains are now Diesel-powered.

"The Southern Pacific spent 150 million dollars last year buying supplies ranging from engines to thumb tacks," he concluded. "The railroad pays half a million dollars a year taxes in Klamath County. It is also significant that 50 cents out of every dollar earned by the Southern Pacific goes to payrolls."

(Listen to Family Album, Sunday, 9 p.m., Radio Station KFLW)

Now!

SHASTA

DRIVE-IN PHONE 2-3535

OPEN DAILY 7:00 P. M.

DELINQUENCY!

...in Today's High Schools!

Timely! Shocking! Real!

Blackboard Jungle

GLENN FORD

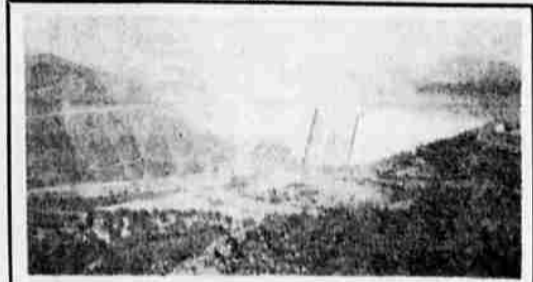
ANNE FRANCIS - LOUIS CALHERN

Shorts - Cartoon

FREE CART RIDES FOR THE KIDDIEST!

Your "Krystal Kote" Photo Finishing Dealers Now Offer You Dated Photo Finishing

At No Extra Cost (Miniature Sizes Not Included)



No more wondering when snap was taken. Date photographed permanently on border of print. Always visible even when mounted in albums.

Let one of the following "Krystal Kote" dealers serve you with this new Dated Print. These dealers have long recognized high quality Photo Finishing in this area.

- Klamath Falls:**
- Big Y Market
 - Bud and Charlotte's Newsstand
 - Buy Low Variety
 - The Corner Store
 - Eastside Pharmacy
 - Lee Hendricks Drug Store
 - Idella's Grocery
 - McConkey's Drug Store
 - Mac's Store
 - Mead's Drug
 - Schneider's Variety
 - Star Drug
 - Suburban Drug
 - Waagener's Drug
 - Wood's Drug
 - Underwood's Camera Shop
 - Bonanza Variety
 - Earl's Pharmacy, Tulelake
 - Ben Franklin Store, Merrill
 - Homestead Market, Tulelake
 - Intermountain Pharmacy, Fall River Mills, Cal.
 - Lee's Variety, Tulelake
 - Toketee Falls Store
 - Lemolo Store
 - Lakeview Studio & Camera Shop
 - McVay's Variety, Malin
 - Malin Drug
 - Mt. Hebron Store
 - Snyder & Howard Drug, Lakeview
 - Thornton's Drug, Lakeview
 - Tikkanen's Store, Bly

Krystal Kote Photo Finishing

British Now Fooling With Flying Mattress That May Put Plane In Private Home

LONDON (UP) — Britain today followed up its invention of the "flying bedstead" with the "flying mattress"—a plane with inflatable wings you can blow up at the corner filling station.

The flying bedstead was a jet-powered platform that went straight up. Its development is still top secret.

There's nothing secret about the flying mattress. It was developed by a private firm which hopes to put it on the market for less than \$3000.

The British Ministry of Supply was so impressed it ordered six of the machines for testing and

GUilty

GUAM (AP) — Pedro J. Huesca, 35, pleaded guilty Friday to voluntary manslaughter in the July 1 stabbing of Guillermo M. Mardahan, 40, and was sentenced to two years in prison.

Cash and Carry SPECIAL!

Unarranged Gladiolus 1 doz

Suburban Flower Shop

3414 So. 6th Ph. 8188

British Now Fooling With Flying Mattress That May Put Plane In Private Home

LONDON (UP) — Britain today followed up its invention of the "flying bedstead" with the "flying mattress"—a plane with inflatable wings you can blow up at the corner filling station.

The flying bedstead was a jet-powered platform that went straight up. Its development is still top secret.

There's nothing secret about the flying mattress. It was developed by a private firm which hopes to put it on the market for less than \$3000.

The British Ministry of Supply was so impressed it ordered six of the machines for testing and

NOW — WESTINGHOUSE'S GREAT TV SHOW

STUDIO ONE

CAN BE SEEN IN KLAMATH FALLS OVER CHANNEL 5 ON MONDAY NIGHTS AT 6 P.M.

East Side Electric

Your Westinghouse Dealer

625 Klamath Ave. In Klamath Falls Phone 3164

CG Tells Of Ship Refusal

NORTH BEACH, Md. (UP) — The Coast Guard disclosed today it refused nearly a year ago to issue an operations certificate to the owners of an old wooden cruise ship which was pounded to pieces on Chesapeake's Bay in hurricane Connie's worst disaster.

At least 11 persons drowned when the three-masted vessel broke up near here late yesterday. Three other persons still were missing today and 13 others were rescued.

A Coast Guard spokesman at Baltimore said the 183-ton vessel's owners were ordered last September to discontinue carrying passengers for hire pending an inspection because the ship was considered "unseaworthy." However, the owners appealed successfully to the Coast Guard in Washington on the grounds that federal regulations did not apply to their vessel because it was smaller than 800 gross tons.

BETTY GRABLE

SHEREE NORTH

ROBERT CUMMINGS

CHARLES COBURN

TOMMY NOONAN

"DENNIS THE MENACE"

TWO SITTERS? THAT'S NOT FAIR!

Pistol Champs To Shoot It Out

VANCOUVER, B.C. (AP) — The shooting eyes of Vancouver's police force will be matched against those of police from Pacific Northwest centers and the U.S. Army here Aug. 20.

Vancouver will be represented by five constables and two police women at the annual police revolver championships.

Lois Dinsmore, defending aggregate champion, and Ann Nowlin, novice champion in 1954, will be included on the Vancouver team.

TOWER NOW

PHONE 8484

DOORS OPEN 12:45

IT'S JOY!

IT'S MAGIC!

IT'S PURE ENCHANTMENT!

It's the wonder-tale the whole world loves... wondrously spun in a rainbow of rollicking fun, glowing warmth and tingling excitement!

Walt Disney's Wonderful Adventures of Pinocchio

Color by **TECHNICOLOR**

Re-released by RKO Radio Pictures, Inc. ©Walt Disney Productions

HEAR THE 7 HAPPY SONGS including "When You Wish Upon a Star"

FIERY DRAMA!

Courageous men...and a woman of passion...blazing a fury-trail through the savage wilderness!

TIMBERJACK

STARRING: STERLING HAYDEN - VERA RALSTON - DAVID BRYAN

SHORTS

FREE CART RIDES FOR THE KIDDIEST!

Now Playing!

HOW TO BE VERY, VERY POPULAR

CINEMASCOPE

Continuous Today from 12:45

ESQUIRE

PHONE 4567