

### Cattle Fed By New Type Bins

One of the largest and most efficient cattle feeding operations in Klamath County is the one at the foot of Stukel Mountain owned and operated by C. Ed Johnson, owner of the Super Packing Company. This large 40 acre plot "has everything" to quote Johnson, "It has plenty of juniper trees for

shelter and shade, is well drained and is located in an agricultural district which can supply all needed feed." The lot is arranged with a central work area servicing four large pens of cattle. They are being fed on grain and hay bought from local farmers.

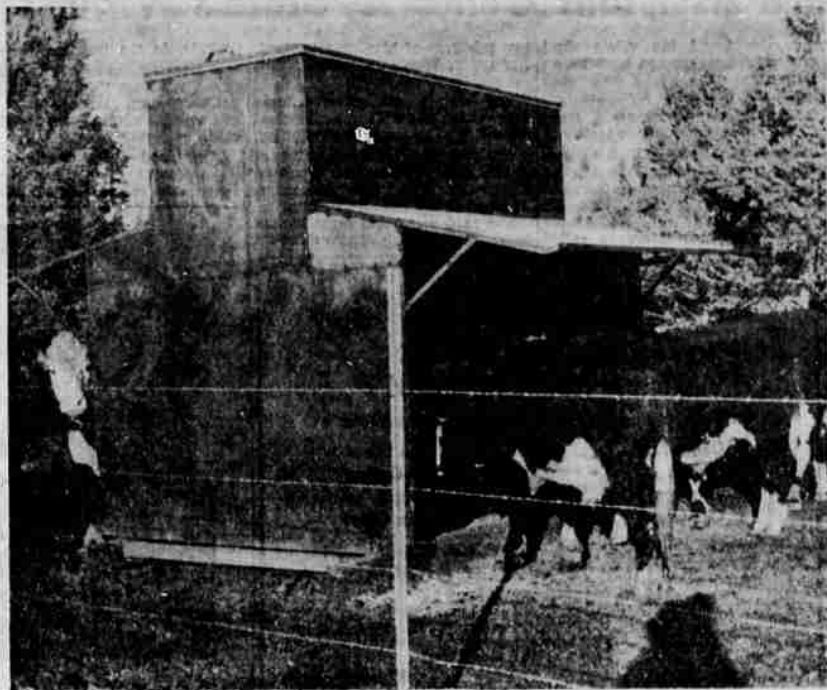
The grain is fed from large metal self-feeders designed for this purpose by Johnson. In this method of feeding, the cattle have grain before them at all times and can eat all they require without the necessity of hand feeding. Self feeding has been the usual practice of feeding in the Middle West for many years.

At present 1300 beef cattle are being fed on the lot. At full capacity of the operation will feed 4,000 head of cattle. This is the second year of operation for the feed lot.

Some of these cattle were shipped to the central livestock markets last year and invariably topped the market and brought a premium. However, Johnson states, the basic purpose of the feeding operation is to afford a consistent and uniform quality of cattle for the Super Packing Company and its retail customers throughout the state.

He further states that experience shows it is much more economical to process these cattle locally and ship them dressed than to ship them to other markets alive. In addition, it affords an industrial payroll locally.

Since the recent completion of a new beef cooler which will hold 100 head of dressed beef and a new refrigeration system, the Super Packing Company is now the largest and most modern plant in Southern Oregon. The plant is open to visitors at all times.



THIS AUTOMATIC SELF-FEEDER is one of many used on the feed lot operated by the Super Packing Company on the hill road north of Merrill. Feeders were designed by C. Ed Johnson owner of the packing concern and feed lot.

### CAB Sets New Mail Rates

WASHINGTON (AP) — The Civil Aeronautics Board Tuesday set 18.98 cents per ton-mile as a "fair and reasonable temporary rate" for airlines hauling 3-cent mail as air mail on the West Coast.

The CAB ordered airlines paid at that rate during the experimental first class mail airlift, which went into effect Nov. 22, or until a permanent rate is established.

At the same time, the CAB said railroads, which have protested the use of airlines to carry 3-cent mail, will have a chance to present arguments against the plan when and if a permanent rate is established.

West Coast cities linked in the experimental service include Seattle, Portland, Salem, Bend, Redmond, Eugene, Medford and Klamath Falls, Ore.; San Francisco, Oakland, Sacramento, Stockton, Modesto, Merced, Salinas, Fresno, Visalia, Bakersfield, Los Angeles, Long Beach and San Diego, Calif.

### BPW Club Holds Nursing Classes

WEED — The Weed Business and Professional Women's Club is sponsoring first aid and home nursing classes to begin after the first of the year. The November dinner meeting was held at the Geneva Hotel last week with Mrs. Louise Harris and Mrs. Hazel Hickey in charge of table decorations.

New appointments of Mary Scalise to the office of hospitality chairman and Alma Lester as national security chairman were made at the meeting. Assisting chairmen, Lois Alford and legislation chairman, Alma Lester, presented a legislation program which will be carried over as a part of next month's agenda.

The purchase of the wheel chair by the women's club for free community use was made and upon its arrival will be displayed in the Weed.

The December meeting is scheduled as a Christmas party to be held at the Geneva Hotel December 15. Mrs. Reba Moore will be chairman for the evening and will be assisted by Mrs. Ida Pastega, Mrs. Beulah King, Mrs. Lois Marshall, Alma Lester and Mrs. Linda Mazziar.

CHANGES — PARIS (AP) — The National Assembly has approved 11 changes in France's constitution. The reforms include measures designed to trim the influence of the Communists and to ease the task of getting new premiers into office.

#### THREAT

BERLIN (AP) — Allied quarters in Berlin said Wednesday that the Moscow conference threat to beat up a Communist East German army is probably pure bluff.

#### ARRESTED

SEOUL (AP) — Seoul police Wednesday said they had arrested four Communist agents who smuggled narcotics into South Korea to finance their espionage activities.

Take it from me... Bessy, the Basin Bessy...

OH, WHAT MILK CAN DO...

IT'S GOT THAT EXTRA SOMETHING!

KLAMATH BASIN GRADE PRODUCERS ASSOCIATION

### Oregon Vets' Taxes Paid

Veterans with homes and farms financed by the Oregon veterans' home and farm loan program paid state property taxes on 10,285 pieces of property in the amount of \$1,092,649.10 for the year 1954-55, Director H. C. Sallfield of the Department of Veterans' Affairs reported this week.

In Klamath County, 176 veterans with homes and farms financed by the state loan paid \$13,682.78 on their real property.

The veteran doesn't pay these taxes direct to the tax collector. He pays one-twelfth of them every month to the Department of Veterans' Affairs along with his monthly loan repayment. The department in turn pays the tax collector, and does it in advance of the November 15 deadline in order to give the veteran the advantage of a 3 per cent discount. The tax savings effected for the 10,285 property holders this year amounted to \$33,793. The average tax paid by each veteran was \$106.24.

The department collects the veteran's taxes for two reasons — to relieve him from the necessity of paying his own taxes in a lump

sum, and to prevent tax delinquencies. Largest tax payments went to Multnomah County, which received \$274,898 from 2,455 veterans' properties. Lane County was second, collecting \$84,746 from 732

veterans, and Clackamas was third, with 723 veterans paying \$83,423.

**HOTELS**  
**OSBURN** **HOLLAND**  
**EUGENE, ORE.** **MEDFORD**  
 Thoroughly Modern  
 Mrs. J. E. Earley—Joe Earley Jr.  
 Proprietors

December 1st, 1954

25 Days Until Christmas



Shop WOODS DRUG STORE For Your Christmas Needs!

We carry Cara Nome, Coty, Revlon, Dorothy Gray, Stag, Seaforth and many other nationally known brands.

- Electric Shavers • Safety Razors
- Clocks • Flashlights
- Stationery • Manicure Sets
- Complete line of sundries

Cigarettes Cut in Price

Reg. Brands \$1.61 carton King Size \$1.71 carton

For Your Benefit at

Wood's Drug Store

Medical Dental Bldg.

Most Prized \*Watch ON THE FARM

6.95

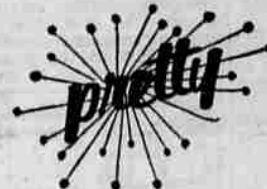
FLEX-LET Long Life WATCH BANDS

the new "STANDARD" EXPANSION WATCH BAND

Wyler incaflex J.C. RENIE Jeweler

1021 Main "Certified Master Watchmaker" Ph. 4606

Sale in time for the holidays!



DRESSES

One Rack Of DRESSES

In An Assortment of fine fabrics:

- Jerseys
- Wools
- Flannels
- Winter Cottons
- Tweeds

Not all sizes in this group — but if your size is here, you'll make a wonderful buy!

Values 14.95 to 34.95

Now

\$5.00

\$7.00

\$9.95

\$12.95

\$17.95

\$19.95

"Shop The Store You Enjoy"

The Town Shop

500 Main

Plenty of Free Parking in Rear

# BIGGEST BEAUTY

OF THE LOW-PRICE 3



LONGEST...LOWEST...AND LOADED WITH POWER!...THE ALL-NEW

# 1955 PLYMOUTH

#### CHOICE OF TOP POWERPLANTS

- 177 hp...Hy-Fire V-8 engine with PowerPak\*
- 167 hp...Hy-Fire V-8 engine
- 157 hp...Hy-Fire V-8 engine
- 117 hp...PowerFlow 6 engine

\*4-barrel carburetor at low extra cost. All powerplants available with PowerFlite, Overdrive or Synchro-Silent transmission. PowerFlite and Overdrive each optional at extra cost.

The car to see and to drive is Plymouth... the biggest, sleekest, handsomest car in the lowest-price field. It's the one car built for the young-hearted tempo of our times. New in glamour! Packed with power! Thrifty to own!

It's fleet of foot... with the mighty wallop of the new Hy-Fire V-8's; or the smooth, eager thrust of the new 6-cylinder PowerFlow 117.

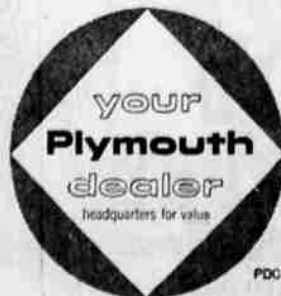
It's easy to drive... there's PowerFlite, the finest no-clutch transmission of all, with instrument panel Flite-Control Drive Selector; or two other great drives... famous Synchro-Silent transmission or Automatic Overdrive.

It's wonderful to ride in... with the extra

smoothness of exclusive Oriflow shock absorbers which have twice the cushioning power of ordinary types. Tubeless tires are standard equipment.

It's lovely to look at... with that matchless, Metal-in-Motion body styling, that fabulous interior luxury that only Plymouth offers in the low-price 3.

Come in today. See for yourself why thousands of motorists are comparing, then buying Plymouth! This year, of all years, look at all 3 — and you, too, will join the big swing to Plymouth... the biggest car, the biggest buy in the lowest-price field!



PDC

Plymouth dealers are listed under "Automobile Dealers—Plymouth" in your Classified Telephone Directory

The BIG swing is to Plymouth COME IN TODAY! SEE IT, DRIVE IT!